

2022 First Extraordinary Session

SENATE BILL NO. 9

BY SENATORS FIELDS, BARROW, BOUDREAUX, BOUIE, CARTER, HARRIS,  
JACKSON, LUNEAU, PETERSON, PRICE, SMITH AND TARVER

CONGRESS. Provides for the redistricting of Congress. (Item #3)

1 AN ACT

2 To enact R.S. 18:1276 and to repeal R.S. 18:1276.1, relative to congressional districts; to

3 provide for the redistricting of Louisiana's congressional districts; to provide with

4 respect to positions and offices, other than congressional, which are based upon

5 congressional districts; to provide for the effectiveness; and to provide for related

6 matters.

7 Be it enacted by the Legislature of Louisiana:

8 Section 1. R.S. 18:1276 is hereby enacted to read as follows:

9 **§1276. Congressional districts**

10 **Louisiana shall be divided into six congressional districts, and the**

11 **qualified electors of each district shall elect one representative to the United**

12 **States House of Representatives. The districts shall be composed as follows:**

- 13 **(1) District 1 is composed of Precincts 1, 2, 3, 4, 5, 7, 8, 9, 10, 11, 12, 13,**
- 14 **14, 15, 16, 17, 18, 19, 20, 21, 22, 23, 24, 25, 26, 27, 28, 29, 30, 31, 32, 33, 34, 35, 36,**
- 15 **37, 38, 39, 40, 41, 42, 43, 44, 45, 46, 51, 52, 53, 54, 55, 56, 57, 58, 59, 60, 61, 62, 63,**
- 16 **64, 65, 66, 67, 68, 69, 70, 71, 72, 73, 74, 75, 76, 77, 78, 79, 80, 81, 82, 83, 84, 85, 86,**
- 17 **87, 88, 89, 90, 91, 92, 93, 94, 95, 96, 97, 98, 99, 100, 101, 102, 103, 105, 106, 117,**

1 118, 119, 120, 121, 122, 123, 124, 125A, 125B, 126, 127, 128, 129, 130, 131, 132,  
2 133, 134, 136, 138, 182, 183, 184, 185A, 185B, 189, 190, 192, 193A, 193B, 194A,  
3 194B, 197A, 198, 199, 202, 203, 204, 246, 247, 248, 1-GI, 1-H, 2-H, 3-H, 4-H, 5-H,  
4 6-H, 7-H, 8-H, 9-H, 1-K, 2-K, 3-K, 4-K, 5-K, 6-KA, 6-KB, 7-KA, 7-KB, 8-K, 9-K,  
5 10-K, 11-K, 12-K, 13-KA, 13-KB, 14-K, 15-K, 16-K, 17-K, 18-K, 19-K, 20-K,  
6 25-K, 27-K, 28-K, 29-K, 34-K, 35-K and 1-L of Jefferson Parish; Precincts 10-1,  
7 10-2, 10-3, 10-4, 10-5, 10-6, 10-7, 10-8, 10-9, 10-10, 10-11, 10-12, 10-13, 10-14,  
8 10-15 and 11-1 of Lafourche Parish; Precincts 3-20, 4-8, 4-9, 4-11, 4-14, 4-15,  
9 4-17, 4-17A, 4-18, 4-20, 4-21, 4-22, 4-23, 5-15, 5-16, 5-17, 5-18, 9-45, 9-45A, 13-1,  
10 13-2, 13-3, 13-4, 13-5, 13-6, 13-7, 13-8, 13-9, 13-10, 13-11, 13-12, 13-13, 13-14,  
11 13-15, 13-16, 14-1, 14-2, 14-3, 14-4, 14-5, 14-6, 14-7, 14-8, 14-9, 14-10, 14-11,  
12 14-12, 14-13A, 14-14, 14-15, 14-16, 14-17, 14-18A, 14-19, 14-20, 14-21, 15-19A,  
13 16-1, 16-1A, 16-2, 16-3, 16-4, 16-5, 16-6, 16-7, 16-8, 17-1, 17-2, 17-3, 17-17, 17-18,  
14 17-18A, 17-19 and 17-20 of Orleans Parish; Plaquemines Parish; St. Bernard  
15 Parish; Precincts 1-6, 2-1, 2-2, 2-3, 2-4, 2-5, 2-6, 3-1, 3-2, 3-3, 4-1, 4-2, 4-3, 4-4,  
16 6-7, 6-8, 7-1, 7-2, 7-3 and 7-4 of St. Charles Parish; St. Tammany Parish and  
17 Washington Parish.

18 (2) District 2 is composed of Precincts 28, 30, 36, 37, 39, 40, 42, 44, 45,  
19 47, 48, 50, 51, 52, 53, 54, 55, 57 and 65 of Ascension Parish; Precincts 1-1, 1-2,  
20 6-1, 6-2, 6-3 and 7-1 of Assumption Parish; Precincts 2-3, 2-14, 2-15, 2-17, 2-18,  
21 2-21, 2-26, 2-28, 2-29, 2-35 and 2-36 of East Baton Rouge Parish; East Feliciana  
22 Parish; Precincts 104, 108, 115, 116, 150, 151, 152, 153, 154, 155, 156, 157A,  
23 157B, 170, 171, 172, 173, 174, 175, 176, 177, 178, 179A, 179B, 180, 181, 187, 188,  
24 191, 195, 196, 197B, 200, 201, 205, 210, 211, 212, 213A, 213B, 213C, 214A, 214B,  
25 215, 216A, 216B, 216C, 217, 225, 226, 227, 228, 229, 230, 231, 232A, 232B, 234,  
26 235, 236, 237, 238A, 238B, 1-G, 2-G, 3-G, 4-G, 5-G, 6-G, 7-G, 8-G, 9-G, 10-G,  
27 11-G, 12-G, 13-G, 21-K, 22-K, 23-K, 24-K, 26-K, 30-K, 31-K, 33-K, 1-W, 2-W,  
28 3-W, 4-W, 5-W, 6-W and 7-W of Jefferson Parish; Precincts 1-1, 1-2, 1-5, 1-6,  
29 2-1, 2-2, 2-4, 2-6, 2-7, 3-1, 3-8, 3-9, 3-12, 3-14, 3-15, 3-18, 3-19, 4-2, 4-3, 4-5, 4-6,

1 4-7, 5-1, 5-2, 5-3, 5-5, 5-7, 5-8, 5-9, 5-10, 5-11, 5-12, 5-13, 6-1, 6-2, 6-4, 6-6, 6-7,  
2 6-8, 6-9, 7-1, 7-2, 7-4, 7-5, 7-6, 7-7, 7-8, 7-9A, 7-10, 7-11, 7-12, 7-13, 7-14, 7-15,  
3 7-16, 7-17, 7-18, 7-19, 7-20, 7-21, 7-23, 7-24, 7-25, 7-25A, 7-26, 7-27, 7-27B, 7-28,  
4 7-28A, 7-29, 7-30, 7-32, 7-33, 7-35, 7-37, 7-37A, 7-40, 7-41, 7-42, 8-1, 8-2, 8-4, 8-6,  
5 8-7, 8-8, 8-9, 8-12, 8-13, 8-14, 8-15, 8-19, 8-20, 8-21, 8-22, 8-23, 8-24, 8-25, 8-26,  
6 8-27, 8-28, 8-30, 9-1, 9-3, 9-4, 9-5, 9-6, 9-7, 9-8, 9-9, 9-10, 9-11, 9-12, 9-13, 9-14,  
7 9-15, 9-16, 9-17, 9-19, 9-21, 9-23, 9-25, 9-26, 9-28, 9-28C, 9-29, 9-30, 9-30A, 9-31,  
8 9-31A, 9-31B, 9-31D, 9-32, 9-33, 9-34A, 9-35, 9-35A, 9-36, 9-36B, 9-37, 9-38,  
9 9-38A, 9-39, 9-39B, 9-40, 9-40A, 9-40C, 9-41, 9-41A, 9-41B, 9-41C, 9-41D, 9-42,  
10 9-42C, 9-43A, 9-43B, 9-43C, 9-43E, 9-43F, 9-43G, 9-43H, 9-43I, 9-43J, 9-43K,  
11 9-43L, 9-43M, 9-43N, 9-44, 9-44A, 9-44B, 9-44D, 9-44E, 9-44F, 9-44G, 9-44I,  
12 9-44J, 9-44L, 9-44M, 9-44N, 9-44O, 9-44P, 9-44Q, 10-3, 10-6, 10-7, 10-8, 10-9,  
13 10-11, 10-12, 10-13, 10-14, 11-2, 11-3, 11-4, 11-5, 11-8, 11-9, 11-10, 11-11, 11-12,  
14 11-13, 11-14, 11-17, 12-1, 12-2, 12-3, 12-4, 12-5, 12-6, 12-7, 12-8, 12-9, 12-10,  
15 12-11, 12-12, 12-13, 12-14, 12-16, 12-17, 12-19, 14-23, 14-24A, 14-25, 14-26, 15-1,  
16 15-2, 15-3, 15-5, 15-6, 15-8, 15-9, 15-10, 15-11, 15-12, 15-12A, 15-13, 15-13A,  
17 15-13B, 15-14, 15-14A, 15-14B, 15-14C, 15-14D, 15-14E, 15-14F, 15-14G, 15-15,  
18 15-15A, 15-15B, 15-16, 15-17, 15-17A, 15-17B, 15-18, 15-18A, 15-18B, 15-18C,  
19 15-18D, 15-18E, 15-18F, 15-19, 15-19B, 15-19C, 16-9, 17-4, 17-5, 17-6, 17-7, 17-8,  
20 17-9, 17-10, 17-11, 17-12, 17-13, 17-13A, 17-14, 17-15 and 17-16 of Orleans  
21 Parish; Precincts 1-1, 1-2, 1-3, 1-5, 5-1, 5-3, 5-4, 5-5, 6-1, 6-2, 6-4 and 6-6 of St.  
22 Charles Parish; St. Helena Parish; St. James Parish; St. John the Baptist Parish  
23 and Tangipahoa Parish.

24 **(3) District 3 is composed of Acadia Parish; Allen Parish; Beauregard**  
25 **Parish; Calcasieu Parish; Cameron Parish; Precincts 1020, 1030, 1060, 1091,**  
26 **1130, 1140, 1161, 1171, 2010, 2010A, 2020, 2030, 2040, 3010, 3020, 3030, 3031,**  
27 **3032, 3040, 3050, 3051, 3052, 3060, 3070, 3071, 4001, 4010, 4011, 4012, 4020,**  
28 **4021, 4030, 4040, 5004, 5010, 5020, 5030, 5040, 5041 and 5050 of Evangeline**  
29 **Parish; Precincts 1-1, 1-3, 2-1, 2-3, 3-1, 3-2, 3-3, 4-1, 4-2, 4-3, 4-4, 5-4, 6-1, 6-5,**

1 7-2, 10-1, 10-2, 10-3, 10-4, 10-7, 11-2, 12-1, 12-3, 13-1, 13-3, 14-1 and 14-3 of  
 2 Iberia Parish; Jefferson Davis Parish; Precincts 25, 26, 27, 28, 29, 30, 31, 32, 33,  
 3 34, 35, 36, 37, 38, 39, 40, 41, 42, 43, 44, 45, 46, 47, 48, 49, 65, 66, 67, 69, 70, 71, 72,  
 4 73, 74, 75, 76, 77, 78, 79, 80, 81, 82, 83, 84, 85, 86, 87, 88, 89, 90, 91, 92, 93, 94, 95,  
 5 96, 97, 98, 99, 100, 101, 102, 103, 104, 105, 106, 107, 108, 109, 110, 111, 114, 115,  
 6 116, 117, 118, 119, 120, 121, 124, 125, 126, 127 and 128 of Lafayette Parish;  
 7 Precincts C22, C23, C30, C31, C32, C33, C34, C35, C36, C37-A, C37-B, C41,  
 8 C42, N6, N7, N11, N12, N13-A, N13-B, N14-A, N14-B, N15, N16, N17, N18-A,  
 9 N18-B, N19, N20, N21, N22, N23, N24, N25, N26, S1, S2, S4, S5, S6A, S6B, S7,  
 10 S8, S9, S10, S11, S13, S14, S20, S21, S22, S23, S24, S25, S26, S27, S28 and S29  
 11 of Rapides Parish; Vermilion Parish and Precincts 1-7, 1-7A, 1-7B, 1-8, 1-8A,  
 12 1-8C, 1-8E, 1-8F, 4-1, 4-2, 4-3, 4-3A, 4-3C, 4-3E, 4-3F, 4-3G, 4-3J, 4-3K, 4-3L,  
 13 4-3M, 4-3N, 5-1, 5-1A, 5-2, 5-2A, 6-1, 6-2, 6-3, 6-4, 7-1, 7-2A, 7-3, 7-4, 7-4A, 7-5,  
 14 7-5A, 7-5C, 8-1, 8-2 and 8-3 of Vernon Parish.

15 (4) District 4 is composed of Bienville Parish; Bossier Parish; Caddo  
 16 Parish; Caldwell Parish; Claiborne Parish; De Soto Parish; Grant Parish;  
 17 Jackson Parish; La Salle Parish; Lincoln Parish; Natchitoches Parish; Precincts  
 18 1, 1A, 2, 4, 6, 7, 25, 31, 32, 33, 34, 35, 36, 37, 38, 39, 40, 41, 42, 43, 44, 44A, 45, 46,  
 19 47, 48, 49, 50, 51, 51A, 52, 52A, 53, 54, 55, 56, 56A, 57, 58, 61, 71 and 75 of  
 20 Ouachita Parish; Red River Parish; Sabine Parish; Union Parish; Precincts 1-1,  
 21 1-1B, 1-2, 1-2A, 1-3, 1-3B, 1-3C, 1-3D, 1-4, 1-4A, 1-4B, 1-4C, 1-4D, 1-5, 1-5A,  
 22 1-6, 1-6A, 1-6B, 1-9, 2-1, 2-1A, 2-2, 2-2A, 2-3, 2-3A, 2-4, 2-4E, 3-1, 3-2, 3-3, 3-4,  
 23 3-5 and 7-2 of Vernon Parish; Webster Parish and Winn Parish.

24 (5) District 5 is composed of Avoyelles Parish; Catahoula Parish;  
 25 Concordia Parish; Precincts 1-1, 1-2, 1-3, 1-4, 1-5, 1-6, 1-9, 1-10, 1-11, 1-13, 1-14,  
 26 1-15, 1-16, 1-17, 1-18, 1-19, 1-20, 1-21, 1-22, 1-23, 1-24, 1-25, 1-26, 1-27, 1-28,  
 27 1-29, 1-30, 1-31, 1-32, 1-33, 1-36, 1-37, 1-38, 1-45, 1-46, 1-50, 1-51, 1-54, 1-55,  
 28 1-57, 1-58, 1-60, 1-61, 1-62, 1-63, 1-67, 1-68, 1-70, 1-71, 1-77, 1-78, 1-81, 1-82,  
 29 1-83, 1-84, 1-85, 1-86, 1-87, 1-88, 1-91, 1-92, 1-93, 1-94, 1-95, 1-97, 1-100, 1-101,

1 1-102, 1-104, 2-1, 2-2, 2-4, 2-5, 2-9, 2-10, 2-11, 2-12, 2-13, 2-16, 2-19, 2-20, 2-22,  
2 2-23, 2-24, 2-25, 2-27, 2-30, 2-31, 2-32, 2-34, 2-37, 3-8, 3-12, 3-24, 3-28, 3-32, 3-54  
3 and 3-72 of East Baton Rouge Parish; East Carroll Parish; Precincts 1010, 1031,  
4 1040, 1041, 1050, 1080, 1081, 1090, 1100, 1101, 1110, 1120, 1150, 1160, 1162 and  
5 1170 of Evangeline Parish; Franklin Parish; Precincts 13C, 14, 14A, 15, 16, 17,  
6 18, 19, 20, 21, 22, 23, 26, 27, 28, 29, 31 and 32 of Iberville Parish; Precincts 1, 2,  
7 3, 4, 5, 6, 7, 8, 9, 10, 11, 12, 13, 14, 15, 16, 17, 18, 19, 20, 21, 22, 23, 24, 51, 52, 53,  
8 54, 55, 56, 57, 58, 59, 60, 61, 62, 63, 64, 68, 112, 113, 122 and 123 of Lafayette  
9 Parish; Madison Parish; Morehouse Parish; Precincts 3, 5, 8, 9, 9A, 10, 11, 12,  
10 13, 14, 15, 16, 17, 18, 19, 20, 21, 22, 23, 24, 26, 27, 27A, 28, 29, 30, 59, 60, 62, 63,  
11 64, 65, 65A, 66, 67, 68, 69, 70, 72, 73, 74, 76, 77, 78 and 79 of Ouachita Parish;  
12 Pointe Coupee Parish; Precincts C1, C2, C3, C4, C5, C6, C7, C8, C9, C10,  
13 C11-A, C11-B, C13, C14, C15, C17, C18, C19, C20, C21, C24, C25, C26, C27,  
14 C28, C38-A, C38-B, C39, C40, N1, N2, N3, N4, N5, N8, N9, N10, N27, N28, N29,  
15 S15, S16, S17, S18 and S19 of Rapides Parish; Richland Parish; St. Landry  
16 Parish; Precincts 3, 4, 7, 8, 9, 10, 11, 14, 15, 16, 17, 18, 19, 20, 21, 23, 24, 26, 27,  
17 28 and 29 of St. Martin Parish; Tensas Parish; West Baton Rouge Parish; West  
18 Carroll Parish and West Feliciana Parish.

19 (6) District 6 is composed of Precincts 1, 2, 3, 4, 5, 6, 7, 8, 9, 10, 11, 12,  
20 13, 14, 15, 16, 17, 18, 20, 21, 22, 23, 24, 25, 26, 27, 31, 32, 33, 34, 35, 41, 43, 58, 61,  
21 62, 63, 64, 66, 71, 72, 73, 76, 77 and 78 of Ascension Parish; Precincts 2-1, 2-2,  
22 2-3, 2-4, 2-5, 3-1, 3-2, 4-1, 4-2, 4-3, 5-1, 5-2, 5-3, 5-5, 7-2, 7-3, 8-1 and 9-1 of  
23 Assumption Parish; Precincts 1-7, 1-8, 1-12, 1-34, 1-35, 1-39, 1-40, 1-41, 1-42,  
24 1-43, 1-44, 1-47, 1-48, 1-49, 1-52, 1-53, 1-56, 1-59, 1-64, 1-65, 1-66, 1-69, 1-72,  
25 1-73, 1-74, 1-75, 1-76, 1-79, 1-80, 1-89, 1-90, 1-98, 1-99, 1-103, 1-105, 1-107, 2-6,  
26 2-7, 2-8, 2-33, 3-1, 3-2, 3-3, 3-4, 3-5, 3-6, 3-7, 3-9, 3-10, 3-11, 3-13, 3-14, 3-15,  
27 3-16, 3-17, 3-18, 3-19, 3-20, 3-21, 3-22, 3-23, 3-25, 3-26, 3-27, 3-29, 3-30, 3-31,  
28 3-33, 3-34, 3-35, 3-36, 3-37, 3-38, 3-39, 3-40, 3-41, 3-43, 3-44, 3-45, 3-46, 3-47,  
29 3-48, 3-49, 3-50, 3-51, 3-52, 3-53, 3-55, 3-56, 3-57, 3-58, 3-59, 3-60, 3-61, 3-62,

1           3-63, 3-64, 3-65, 3-66, 3-67, 3-68, 3-69, 3-70 and 3-71 of East Baton Rouge  
2           Parish; Precincts 6-3, 7-1, 7-4, 7-5, 8-2, 8-3, 9-1, 9-2, 9-4 and 9-5 of Iberia  
3           Parish; Precincts 1, 3, 4, 5, 6, 7, 9, 10, 11, 12, 13, 15B, 24 and 25 of Iberville  
4           Parish; Precincts 1-1, 1-2, 1-3, 1-4, 1-5, 2-1, 2-1A, 2-2, 2-3, 2-3A, 2-4, 2-5, 2-6,  
5           2-7, 2-8, 2-9, 2-10, 2-11, 2-12, 2-13, 2-14, 3-1, 3-2, 3-3, 3-4, 3-5, 3-6, 4-1, 4-2, 4-3,  
6           4-4, 4-5, 4-6, 5-1, 5-1A, 5-1B, 5-2, 6-1, 6-2, 6-3, 6-4, 6-5, 7-1, 7-2, 7-3, 7-4, 8-1, 9-1,  
7           9-2, 10-16, 11-2, 11-3, 11-4 and 11-5 of Lafourche Parish; Livingston Parish;  
8           Precincts 1, 2, 5, 6, 12, 13, 22 and 25 of St. Martin Parish; St. Mary Parish and  
9           Terrebonne Parish.

10           Section 2. R.S. 18:1276.1 is hereby repealed.

11           Section 3.(A) The precincts referenced in this Act are those precincts identified as  
12           Voting Districts (VTDs) in the 2020 Census Redistricting TIGER/Line Shapefiles for the  
13           State of Louisiana as validated through the data verification program of the Louisiana House  
14           of Representatives and the Louisiana Senate and available on the legislature's website on the  
15           effective date of this Section.

16           (B) When a precinct referenced in this Act has been subdivided by action of the  
17           parish governing authority on a nongeographic basis or subdivided by action of the parish  
18           governing authority on a geographic basis in accordance with the provisions of R.S.  
19           18:532.1, the enumeration in this Act of the general precinct designation shall include all  
20           nongeographic and all geographic subdivisions thereof, however such subdivisions may be  
21           designated.

22           (C) The territorial limits of the districts as provided in this Act shall continue in  
23           effect until changed by law regardless of any subsequent change made to the precincts by  
24           the parish governing authority.

25           Section 4. The provisions of this Act shall not reduce the term of office of any  
26           person holding any position or office on the effective date of this Section for which the  
27           appointment or election is based upon a congressional district as composed pursuant to R.S.  
28           18:1276.1. Any position or office that is filled by appointment or election based on a  
29           congressional district and that is to be filled after January 3, 2023, shall be appointed or

1 elected from a district as it is described in Section 1 of this Act.

2 Section 5.(A) Solely for the purposes of qualifying for election and the election of  
3 representatives to the United States Congress at the regularly scheduled election for  
4 representatives to the congress in 2022, the provisions of Section 1 of this Act shall become  
5 effective upon signature of this Act by the governor or, if not signed by the governor, upon  
6 expiration of the time for bills to become law without signature by the governor, as provided  
7 in Article III, Section 18 of the Constitution of Louisiana. If this Act is vetoed by the  
8 governor and subsequently approved by the legislature, the provisions of Section 1 of this  
9 Act shall become effective on the day following such approval for the purposes established  
10 in this Subsection.

11 (B) For subsequent elections of representatives to the United States Congress and  
12 for all other purposes, the provisions of Section 1 of this Act shall become effective at noon  
13 on January 3, 2023.

14 (C) The provisions of Section 2 of this Act shall become effective at noon on  
15 January 3, 2023.

16 (D) The provisions of this Section and Sections 3 and 4 of this Act shall become  
17 effective upon signature of this Act by the governor or, if not signed by the governor, upon  
18 expiration of the time for bills to become law without signature by the governor, as provided  
19 in Article III, Section 18 of the Constitution of Louisiana. If this Act is vetoed by the  
20 governor and subsequently approved by the legislature, the provisions of this Section and  
21 Sections 3 and 4 of this Act shall become effective on the day following such approval.

---

The original instrument and the following digest, which constitutes no part  
of the legislative instrument, were prepared by Suzanne G. Morain.

---

#### DIGEST

SB 9 Original

2022 First Extraordinary Session

Fields

Present U.S. Constitution (14th Amendment) provides that representatives in congress shall be apportioned among the several states according to their respective numbers, counting the whole number of persons in each state. The U.S. Supreme Court has held that the population of congressional districts in the same state must be as nearly equal in population as practicable.

Proposed law redraws district boundaries for the six congressional districts, effective upon signature of the governor or lapse of time for gubernatorial action for purposes of the 2022 election.

Proposed law retains present districts until noon on January 3, 2023, at which time present law is repealed and proposed districts are effective for all other purposes.

Proposed law specifies that precincts referenced in district descriptions are those precincts identified as Voting Districts (VTDs) in the 2020 Census Redistricting TIGER/Line Shapefiles for the state of La. as validated through the data verification program of the La. legislature. Also specifies that if any such precinct has been subdivided by action of the parish governing authority on a nongeographic basis or subdivided by action of the parish governing authority on a geographic basis in accordance with present law, the enumeration of the general precinct designation shall include all nongeographic and all geographic subdivisions thereof. Further provides that the territorial limits of the districts as enacted shall continue in effect without change regardless of any subsequent change made to the precincts by the parish governing authority.

Proposed law specifies that proposed law does not reduce the term of office of any person holding any position or office on the effective date of proposed law for which the appointment or election is based upon a congressional district as composed pursuant to present law. Specifies that any position or office filled after January 3, 2023, for which the appointment or election is based on a congressional district shall be appointed or elected from a district as it is described in proposed law.

Population data in the summaries accompanying this digest are derived from 2020 Census Redistricting Data (Public Law 94-171), Summary File for Louisiana. Population data, statistical information, and maps are supplied for purposes of information and analysis and comprise no part of proposed law.

Effective for election purposes only for the regular congressional elections in 2022; effective for all other purposes at noon on January 3, 2023.

(Adds R.S. 18:1276; repeals R.S. 18:1276.1)



# Plan Statistics

## Plan: SLS 221ES-18 by Fields

<u>Districts:</u>	<u># of Members</u>	<u>Actual Population</u>	<u>Ideal Population</u>	<u>Absolute Deviation</u>	<u>Relative Deviation</u>
District 1	1	776,309	776,292	17	0.002%
District 2	1	775,886	776,292	-406	-0.052%
District 3	1	776,280	776,292	-12	-0.002%
District 4	1	776,369	776,292	77	0.010%
District 5	1	774,989	776,292	-1,303	-0.168%
District 6	1	777,924	776,292	1,632	0.210%
<b>Grand Total:</b>	<b>6</b>	<b>4,657,757</b>	<b>4,657,752</b>		

Ideal Population Per Member:	776292			
Number of Districts for Plan Type:	6			
Range of District Populations:	774,989	to	777,924	
Absolute Mean Deviation:	489			
Absolute Range:	-1,303	to	1,632	
Absolute Overall Range:	2,935			
Relative Mean Deviation:	0.07%			
Relative Range:	-0.17%	to	0.21%	
Relative Overall Range:	0.38%			

<b><i>Ideal - Actual:</i></b>	<b>-5</b>
<b><i>Remainder:</i></b>	<b>5</b>
<b><i>Unassigned Population:</i></b>	<b>0</b>

# Total Population

Plan: SLS 221ES-18 by Fields

	Total Population	Total White	Total Black	Total Asian	Total American Indian	Total Other	Total Hispanic	VAP Total	VAP White	VAP Black	VAP Asian	VAP American Indian	VAP Other	VAP Hispanic Total
District 1	776,309	531,457	125,691	26,652	16,408	76,101	95,688	604,300	428,263	89,634	19,717	12,079	54,607	67,750
	100.000%	68.459%	16.191%	3.433%	2.114%	9.803%	12.326%	100.000%	70.869%	14.833%	3.263%	1.999%	9.036%	11.211%
District 2	775,886	270,712	423,572	21,628	9,550	50,424	64,756	599,489	226,032	313,256	17,284	7,360	35,557	44,787
	100.000%	34.891%	54.592%	2.788%	1.231%	6.499%	8.346%	100.000%	37.704%	52.254%	2.883%	1.228%	5.931%	7.471%
District 3	776,280	550,993	159,283	17,765	13,839	34,400	42,348	586,733	428,689	110,899	12,863	10,193	24,089	29,083
	100.000%	70.979%	20.519%	2.288%	1.783%	4.431%	5.455%	100.000%	73.064%	18.901%	2.192%	1.737%	4.106%	4.957%
District 4	776,369	455,289	261,925	12,044	18,038	29,073	34,842	596,371	362,814	190,237	8,874	13,733	20,713	24,185
	100.000%	58.643%	33.737%	1.551%	2.323%	3.745%	4.488%	100.000%	60.837%	31.899%	1.488%	2.303%	3.473%	4.055%
District 5	774,989	312,415	420,311	9,895	7,561	24,807	29,589	588,936	253,813	303,875	7,624	5,649	17,975	20,982
	100.000%	40.312%	54.234%	1.277%	0.976%	3.201%	3.818%	100.000%	43.097%	51.597%	1.295%	0.959%	3.052%	3.563%
District 6	777,924	536,786	152,337	19,304	21,664	47,833	55,326	594,719	424,900	107,868	14,054	15,226	32,671	36,875
	100.000%	69.002%	19.583%	2.481%	2.785%	6.149%	7.112%	100.000%	71.446%	18.138%	2.363%	2.560%	5.494%	6.200%
Grand Total	4,657,757	2,657,652	1,543,119	107,288	87,060	262,638	322,549	3,570,548	2,124,511	1,115,769	80,416	64,240	185,612	223,662
	100.000%	57.059%	33.130%	2.303%	1.869%	5.639%	6.925%	100.000%	59.501%	31.249%	2.252%	1.799%	5.198%	6.264%

# Voter Registration

Plan: SLS 221ES-18 by Fields

	Reg Total Dec 2021	Reg White Dec 2021	Reg Black Dec 2021	Reg Other Dec 2021	Reg Dem Total Dec 2021	Reg Rep Total Dec 2021	Reg Other Total Dec 2021
District 1	498,984	387,742	66,056	45,186	150,321	200,223	148,440
	82.572%	77.706%	13.238%	9.056%	30.125%	40.126%	29.748%
District 2	488,263	186,396	265,664	36,203	284,099	80,619	123,545
	81.447%	38.175%	54.410%	7.415%	58.186%	16.511%	25.303%
District 3	467,511	364,370	82,130	21,011	148,071	191,574	127,866
	79.680%	77.938%	17.568%	4.494%	31.672%	40.977%	27.350%
District 4	477,043	308,257	149,005	19,781	174,132	183,880	119,031
	79.991%	64.618%	31.235%	4.147%	36.502%	38.546%	24.952%
District 5	486,555	212,401	259,139	15,015	261,726	111,824	113,005
	82.616%	43.654%	53.260%	3.086%	53.792%	22.983%	23.226%
District 6	475,990	368,823	80,754	26,413	142,655	200,660	132,675
	80.036%	77.485%	16.965%	5.549%	29.970%	42.156%	27.873%
<b>Grand Total</b>	<b>2,894,346</b>	<b>1,827,989</b>	<b>902,748</b>	<b>163,609</b>	<b>1,161,004</b>	<b>968,780</b>	<b>764,562</b>

# Splits

## Plan: SLS 221ES-18 by Fields

	Total Population	Total White	Total Black	Total Asian	Total American Indian	Total Other	VAP Total	VAP White	VAP Black	VAP Asian	VAP American Indian	VAP Other	Reg Total Dec 2021	Reg White Dec 2021	Reg Black Dec 2021	Reg Other Dec 2021
District 1																
*Jefferson	273,540	171,926	40,199	14,108	5,134	42,173	218,139	143,555	29,457	10,650	3,848	30,629	168,364	127,700	18,745	21,919
*Lafourche	19,258	15,161	568	324	1,720	1,485	14,667	11,950	336	248	1,167	966	11,112	10,077	170	865
*Orleans	71,977	54,482	8,665	2,993	859	4,978	59,712	45,594	7,239	2,335	691	3,853	50,593	39,681	5,481	5,431
Plaquemines	23,515	14,287	5,428	1,317	697	1,786	17,334	10,856	3,857	925	500	1,196	13,908	9,513	3,134	1,261
St. Bernard	43,764	24,497	12,309	1,381	947	4,630	31,775	18,992	7,944	982	688	3,169	25,653	18,233	5,497	1,923
*St. Charles	34,222	24,520	6,445	539	655	2,063	25,494	18,952	4,308	348	463	1,423	22,988	17,979	3,785	1,224
St. Tammany	264,570	196,641	38,643	5,774	5,660	17,852	202,228	154,621	26,761	4,075	4,161	12,610	178,779	145,724	21,142	11,913
Washington	45,463	29,943	13,434	216	736	1,134	34,951	23,743	9,732	154	561	761	27,587	18,835	8,102	650
District 1	776,309	531,457	125,691	26,652	16,408	76,101	604,300	428,263	89,634	19,717	12,079	54,607	498,984	387,742	66,056	45,186
	100.000%	68.459%	16.191%	3.433%	2.114%	9.803%	100.000%	70.869%	14.833%	3.263%	1.999%	9.036%	82.572%	77.706%	13.238%	9.056%
District 2																
*Ascension	24,848	7,372	15,720	179	215	1,362	18,221	6,000	11,027	131	143	920	15,703	5,272	9,802	629
*Assumption	5,985	2,474	3,338	21	34	118	4,704	1,984	2,577	14	24	105	4,282	1,698	2,536	48
*East Baton Rouge	21,180	9,618	10,500	284	275	503	15,373	7,353	7,283	188	197	352	13,837	6,903	6,428	506
East Feliciana	19,539	11,516	7,341	91	262	329	16,183	9,740	5,918	61	198	266	13,600	7,959	5,186	455
*Jefferson	167,241	49,009	86,018	8,916	2,552	20,746	126,515	40,580	62,718	7,042	1,987	14,188	94,737	31,916	50,831	11,990
*Orleans	312,020	71,980	210,304	9,863	2,807	17,066	246,484	64,658	158,829	8,185	2,257	12,555	205,651	52,305	136,044	17,302
*St. Charles	18,327	9,030	7,483	298	270	1,246	14,047	7,202	5,582	181	204	878	11,997	6,330	5,012	655
St. Helena	10,920	4,527	6,031	39	134	189	8,463	3,805	4,371	28	109	150	8,321	3,628	4,565	128
St. James	20,192	9,973	9,762	60	82	315	15,505	7,883	7,297	31	64	230	14,966	7,254	7,501	211
St. John the Baptist	42,477	13,877	25,196	403	465	2,536	32,503	11,622	18,437	323	350	1,771	28,913	10,219	17,234	1,460
Tangipahoa	133,157	81,336	41,879	1,474	2,454	6,014	101,491	65,205	29,217	1,100	1,827	4,142	76,256	52,912	20,525	2,819
District 2	775,886	270,712	423,572	21,628	9,550	50,424	599,489	226,032	313,256	17,284	7,360	35,557	488,263	186,396	265,664	36,203
	100.000%	34.891%	54.592%	2.788%	1.231%	6.499%	100.000%	37.704%	52.254%	2.883%	1.228%	5.931%	81.447%	38.175%	54.410%	7.415%
District 3																
Acadia	57,576	44,480	10,864	238	573	1,421	42,943	34,071	7,383	173	400	916	37,678	30,555	6,407	716
Allen	22,750	16,327	4,490	246	947	740	17,510	12,751	3,275	182	646	656	12,201	9,478	2,217	506
Beauregard	36,549	29,529	4,649	402	1,052	917	27,489	22,304	3,495	269	773	648	22,294	18,771	2,369	1,154
Calcasieu	216,785	139,772	59,386	4,702	3,536	9,389	163,166	108,789	41,898	3,359	2,604	6,516	120,511	85,659	29,513	5,339
Cameron	5,617	5,232	125	30	75	155	4,358	4,100	79	23	47	109	4,789	4,610	88	91
*Evangeline	22,862	17,662	3,660	177	239	1,124	17,409	13,506	2,601	134	190	978	14,285	11,965	2,061	259
*Iberia	53,427	26,589	21,790	1,850	593	2,605	40,258	21,483	15,127	1,395	428	1,825	32,748	18,701	12,524	1,523
Jefferson Davis	32,250	25,066	5,837	183	472	692	24,039	19,121	4,006	111	325	476	20,013	16,350	3,202	461
*Lafayette	170,390	125,633	25,993	5,874	2,565	10,325	130,427	99,150	17,864	4,263	1,952	7,198	108,694	89,725	12,482	6,487
*Rapides	71,849	55,429	9,597	1,682	2,201	2,940	54,967	43,423	6,699	1,219	1,663	1,963	45,618	38,291	5,155	2,172

# Splits

## Plan: SLS 221ES-18 by Fields

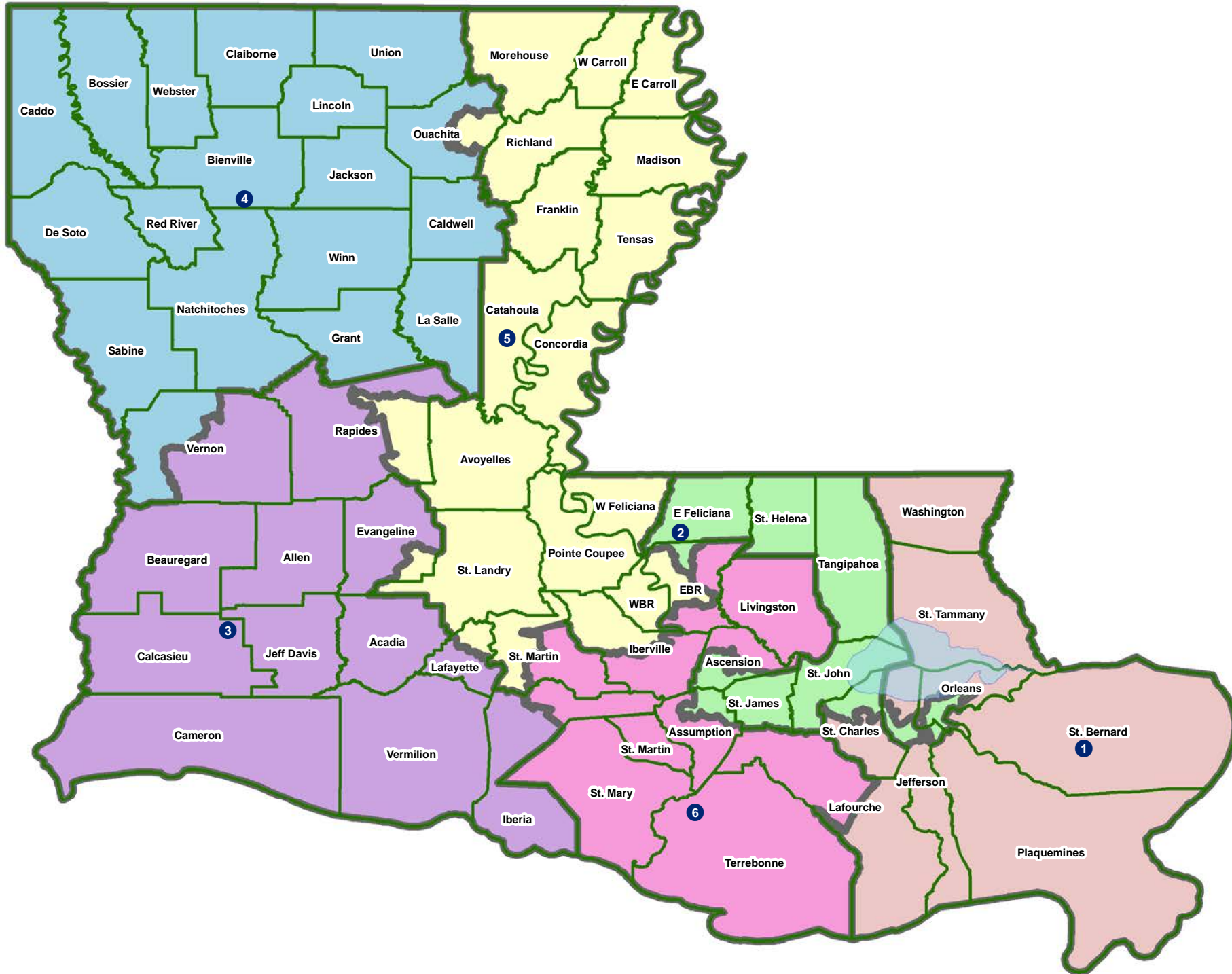
	Total Population	Total White	Total Black	Total Asian	Total American Indian	Total Other	VAP Total	VAP White	VAP Black	VAP Asian	VAP American Indian	VAP Other	Reg Total Dec 2021	Reg White Dec 2021	Reg Black Dec 2021	Reg Other Dec 2021
District 3																
Vermilion	57,359	44,477	8,810	1,447	623	2,002	43,012	34,363	5,787	1,037	488	1,337	36,769	30,505	4,994	1,270
*Vernon	28,866	20,797	4,082	934	963	2,090	21,155	15,628	2,685	698	677	1,467	11,911	9,760	1,118	1,033
District 3	776,280	550,993	159,283	17,765	13,839	34,400	586,733	428,689	110,899	12,863	10,193	24,089	467,511	364,370	82,130	21,011
	100.000%	70.979%	20.519%	2.288%	1.783%	4.431%	100.000%	73.064%	18.901%	2.192%	1.737%	4.106%	79.680%	77.938%	17.568%	4.494%
District 4																
Bienville	12,981	6,950	5,600	57	207	167	10,073	5,486	4,284	30	162	111	8,847	4,843	3,917	87
Bossier	128,746	81,052	32,551	3,492	3,273	8,378	95,876	62,931	22,440	2,448	2,477	5,580	69,743	50,861	14,838	4,044
Caddo	237,848	103,457	119,304	4,034	3,840	7,213	182,407	85,059	86,359	3,008	2,958	5,023	151,296	73,113	71,249	6,934
Caldwell	9,645	7,646	1,632	51	150	166	7,478	5,969	1,224	46	116	123	6,031	5,124	818	89
Claiborne	14,170	7,263	6,360	88	185	274	11,507	6,258	4,824	55	140	230	8,598	4,632	3,820	146
De Soto	26,812	15,284	9,973	117	740	698	20,440	11,909	7,425	86	557	463	18,713	11,330	6,810	573
Grant	22,169	17,709	3,335	133	644	348	17,527	13,964	2,717	97	507	242	12,688	11,174	1,176	338
Jackson	15,031	9,967	4,166	175	255	468	11,783	7,967	3,125	140	174	377	9,449	6,647	2,610	192
La Salle	14,791	11,348	1,422	283	372	1,366	11,563	8,636	1,065	264	271	1,327	8,792	7,978	637	177
Lincoln	48,396	26,034	19,364	892	662	1,444	38,655	21,306	15,119	744	526	960	25,649	15,672	9,016	961
Natchitoches	37,515	19,361	15,725	255	861	1,313	29,349	16,010	11,415	198	683	1,043	23,107	12,850	9,224	1,033
*Ouachita	86,777	69,908	10,367	1,360	2,030	3,112	65,538	53,907	6,953	950	1,574	2,154	55,439	48,466	5,072	1,901
Red River	7,620	4,195	3,106	25	171	123	5,714	3,338	2,164	3	116	93	5,631	3,130	2,418	83
Sabine	22,155	15,036	3,861	94	2,723	441	17,064	12,054	2,655	66	1,970	319	14,547	11,023	2,184	1,340
Union	21,107	14,460	5,224	62	338	1,023	16,632	11,807	3,861	39	254	671	15,221	11,066	3,692	463
*Vernon	19,884	14,290	3,529	508	637	920	15,106	11,137	2,448	376	483	662	12,149	9,422	1,893	834
Webster	36,967	22,735	12,679	208	687	658	28,753	18,144	9,464	154	558	433	22,737	14,938	7,339	460
Winn	13,755	8,594	3,727	210	263	961	10,906	6,932	2,695	170	207	902	8,406	5,988	2,292	126
District 4	776,369	455,289	261,925	12,044	18,038	29,073	596,371	362,814	190,237	8,874	13,733	20,713	477,043	308,257	149,005	19,781
	100.000%	58.643%	33.737%	1.551%	2.323%	3.745%	100.000%	60.837%	31.899%	1.488%	2.303%	3.473%	79.991%	64.618%	31.235%	4.147%
District 5																
Avoyelles	39,693	25,625	11,678	434	767	1,189	30,578	20,269	8,311	379	570	1,049	23,426	16,534	6,294	598
Catahoula	8,906	5,776	2,395	46	119	570	6,951	4,557	1,736	33	87	538	6,467	4,639	1,770	58
Concordia	18,687	10,275	7,725	122	233	332	14,217	8,108	5,613	100	167	229	11,964	7,222	4,540	202
*East Baton Rouge	192,558	31,222	146,624	4,527	1,149	9,036	146,683	27,734	108,093	3,557	927	6,372	113,292	19,333	88,703	5,256
East Carroll	7,459	2,054	5,272	29	43	61	5,901	1,773	4,043	19	27	39	4,709	1,306	3,359	44
*Evangeline	9,488	3,692	5,575	64	41	116	6,999	2,954	3,882	53	27	83	6,268	2,601	3,582	85
Franklin	19,774	12,492	6,802	70	205	205	15,028	9,901	4,779	44	153	151	13,159	9,015	4,034	110
*Iberville	14,830	6,913	7,315	101	141	360	11,528	5,641	5,435	73	110	269	11,153	5,300	5,631	222
*Lafayette	71,363	27,730	39,143	580	645	3,265	53,448	22,458	28,053	401	435	2,101	44,799	18,920	23,999	1,880

# Splits

## Plan: SLS 221ES-18 by Fields

	Total Population	Total White	Total Black	Total Asian	Total American Indian	Total Other	VAP Total	VAP White	VAP Black	VAP Asian	VAP American Indian	VAP Other	Reg Total Dec 2021	Reg White Dec 2021	Reg Black Dec 2021	Reg Other Dec 2021
District 5																
Madison	10,017	3,475	6,363	20	59	100	7,435	2,906	4,391	9	48	81	7,278	2,494	4,674	110
Morehouse	25,629	12,281	12,484	160	370	334	20,062	10,095	9,300	117	279	271	16,922	8,505	8,131	286
*Ouachita	73,591	18,637	50,850	1,428	631	2,045	54,662	16,067	35,337	1,168	485	1,605	44,313	12,049	30,586	1,678
Pointe Coupee	20,758	12,395	7,504	107	159	593	16,250	10,108	5,502	91	119	430	14,675	9,320	5,121	234
*Rapides	58,174	22,081	32,995	746	901	1,451	43,825	17,950	23,506	567	671	1,131	34,558	14,541	18,620	1,397
Richland	20,043	11,785	7,603	83	258	314	15,383	9,338	5,546	66	203	230	13,662	8,470	4,961	231
St. Landry	82,540	43,611	35,836	499	636	1,958	61,811	34,209	25,497	353	451	1,301	54,482	30,093	23,005	1,384
*St. Martin	45,072	27,543	15,500	453	447	1,129	34,099	21,647	11,013	297	338	804	30,387	19,614	10,127	646
Tensas	4,147	1,744	2,312	23	26	42	3,235	1,446	1,728	12	23	26	3,455	1,503	1,917	35
West Baton Rouge	27,199	14,307	11,170	287	326	1,109	20,526	11,146	8,149	209	219	803	17,141	9,937	6,865	339
West Carroll	9,751	7,894	1,425	27	180	225	7,532	6,223	1,010	20	136	143	7,038	5,913	1,040	85
West Feliciana	15,310	10,883	3,740	89	225	373	12,783	9,283	2,951	56	174	319	7,407	5,092	2,180	135
District 5	774,989	312,415	420,311	9,895	7,561	24,807	588,936	253,813	303,875	7,624	5,649	17,975	486,555	212,401	259,139	15,015
	100.000%	40.312%	54.234%	1.277%	0.976%	3.201%	100.000%	43.097%	51.597%	1.295%	0.959%	3.052%	82.616%	43.654%	53.260%	3.086%
District 6																
*Ascension	101,652	73,769	16,496	2,121	1,789	7,477	73,736	55,136	11,112	1,383	1,247	4,858	64,214	51,528	9,012	3,674
*Assumption	15,054	11,248	2,882	75	224	625	11,912	9,161	2,130	43	173	405	10,157	8,002	1,974	181
*East Baton Rouge	243,043	155,229	56,274	11,614	3,303	16,623	193,556	128,794	41,414	8,854	2,623	11,871	152,135	111,996	29,544	10,595
*Iberia	16,502	12,617	2,766	273	201	645	12,533	9,812	1,942	167	153	459	11,778	9,586	1,828	364
*Iberville	15,411	7,920	6,415	101	133	842	12,558	6,821	4,797	76	111	753	9,309	4,832	4,266	211
*Lafourche	78,299	56,549	15,287	701	2,504	3,258	59,952	44,888	10,741	490	1,610	2,223	47,166	38,390	6,994	1,782
Livingston	142,282	116,855	12,658	1,697	3,111	7,961	105,141	88,432	8,136	1,099	2,311	5,163	84,568	76,062	5,425	3,081
*St. Martin	6,695	5,716	421	144	92	322	5,305	4,631	280	110	75	209	4,733	4,320	254	159
St. Mary	49,406	26,949	15,991	835	1,670	3,961	37,521	21,594	11,520	593	1,173	2,641	30,210	18,712	9,891	1,607
Terrebonne	109,580	69,934	23,147	1,743	8,637	6,119	82,505	55,631	15,796	1,239	5,750	4,089	61,720	45,395	11,566	4,759
District 6	777,924	536,786	152,337	19,304	21,664	47,833	594,719	424,900	107,868	14,054	15,226	32,671	475,990	368,823	80,754	26,413
	100.000%	69.002%	19.583%	2.481%	2.785%	6.149%	100.000%	71.446%	18.138%	2.363%	2.560%	5.494%	80.036%	77.485%	16.965%	5.549%

# Congress

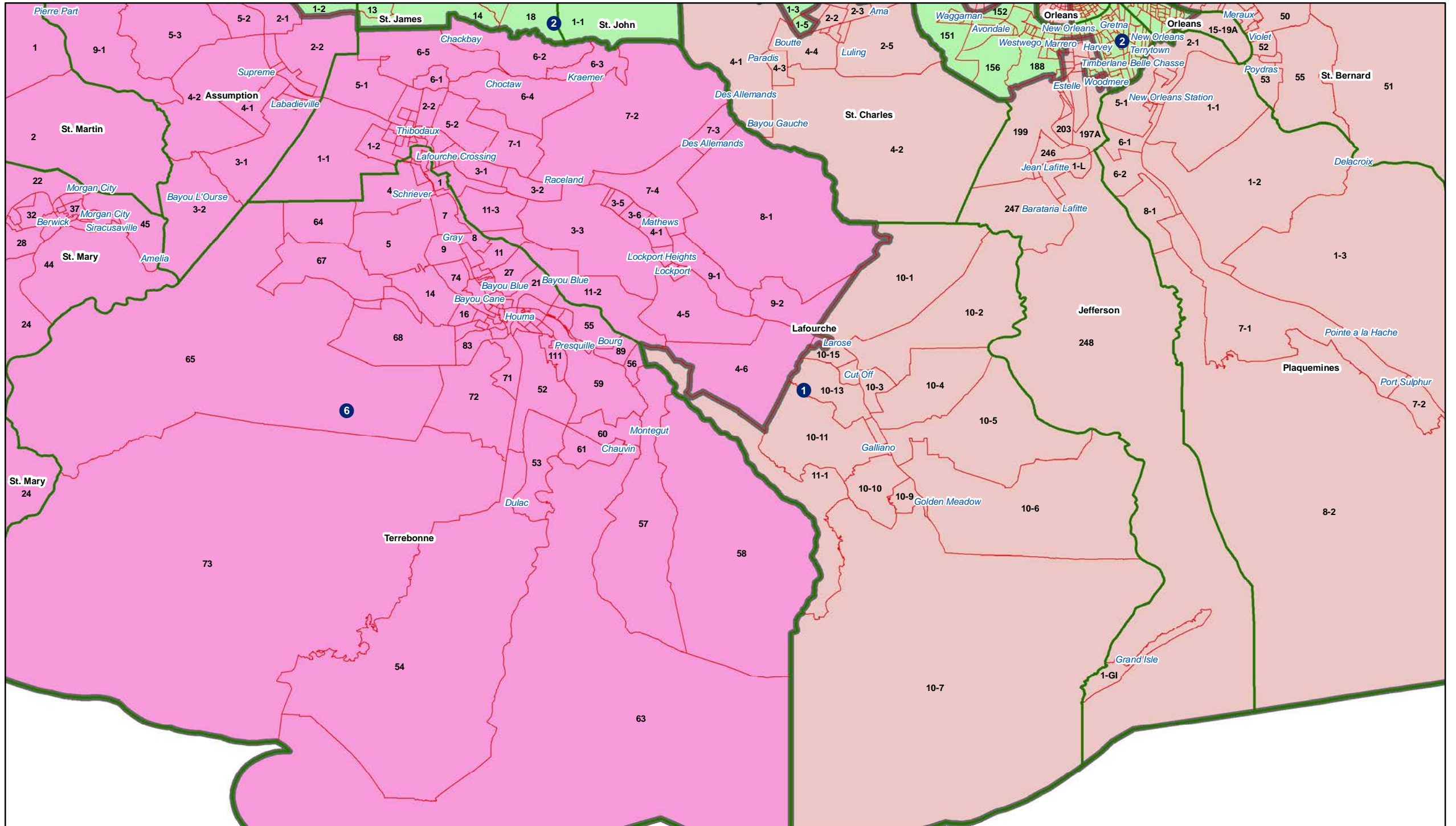






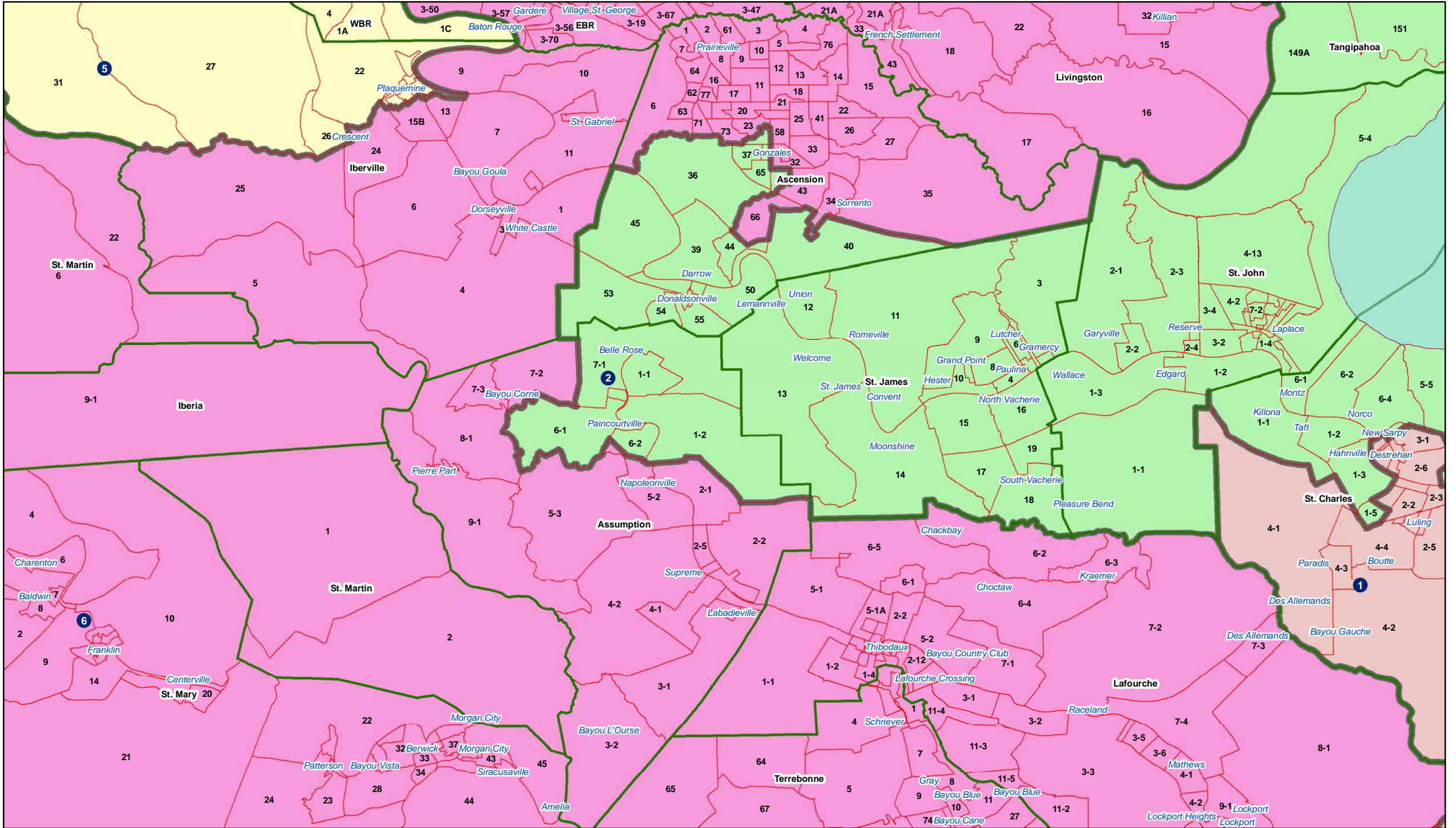


# Congress - Lafourche





# Congress - Ascension / Assumption

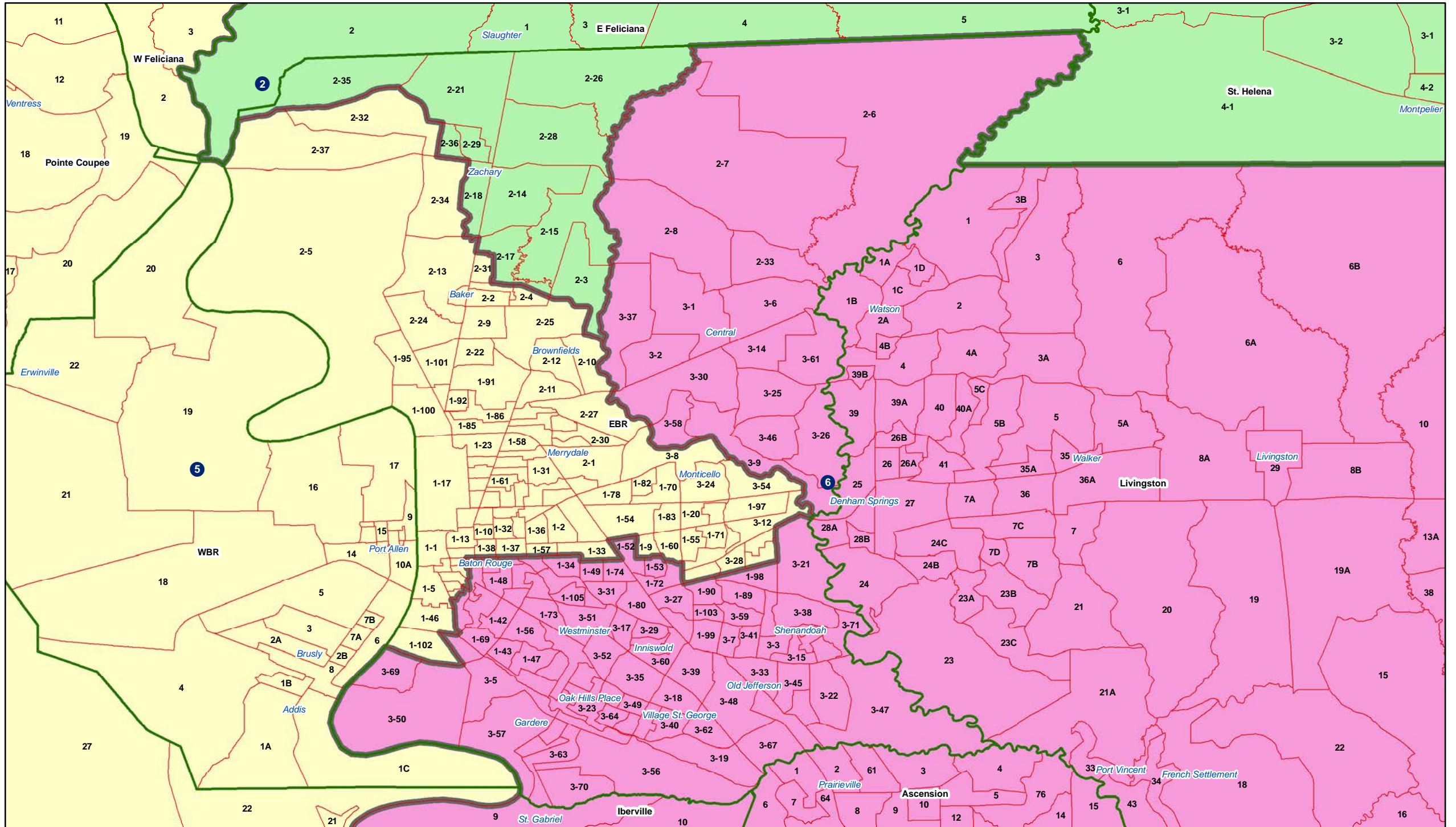






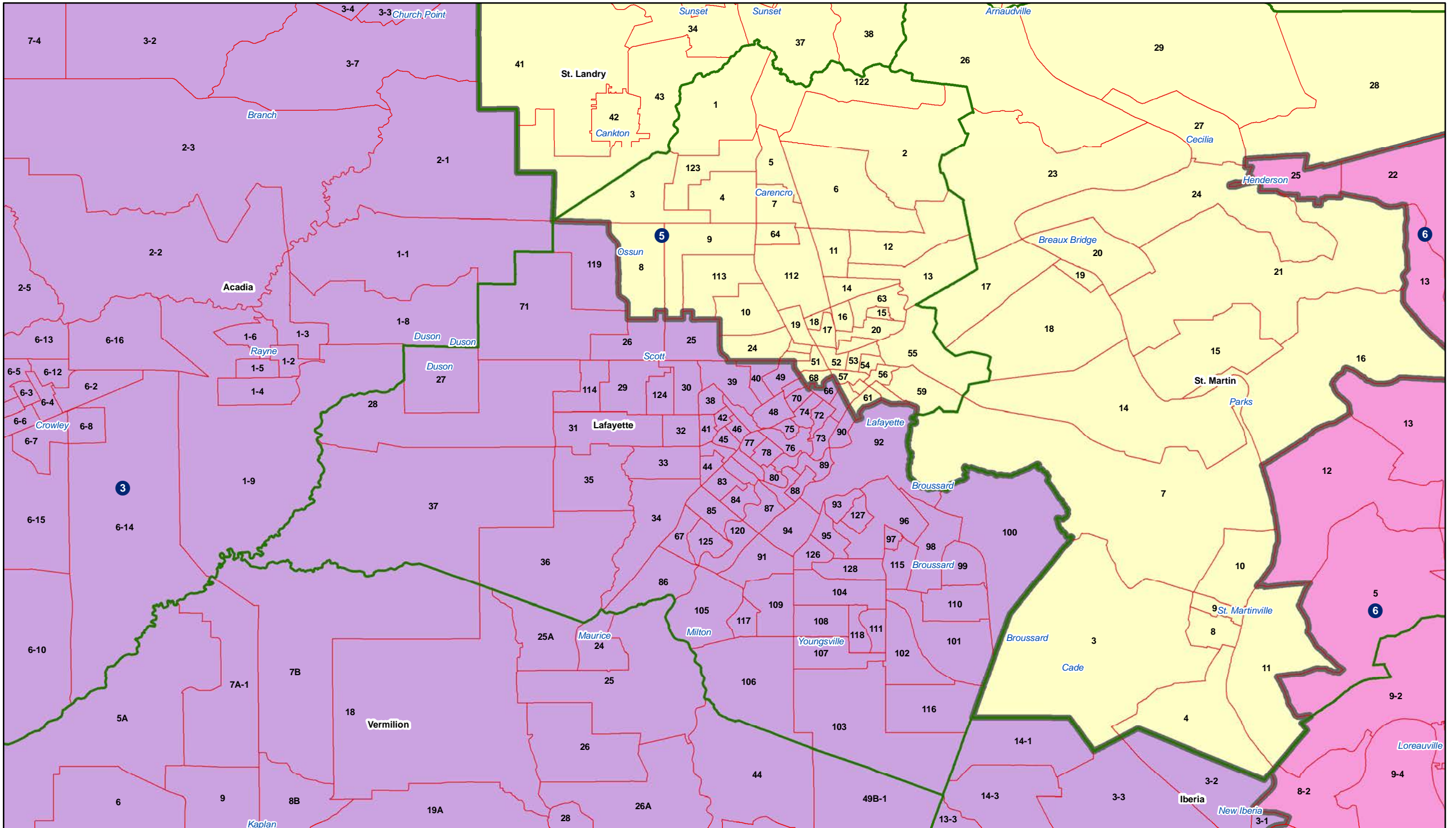


# Congress -East Baton Rouge

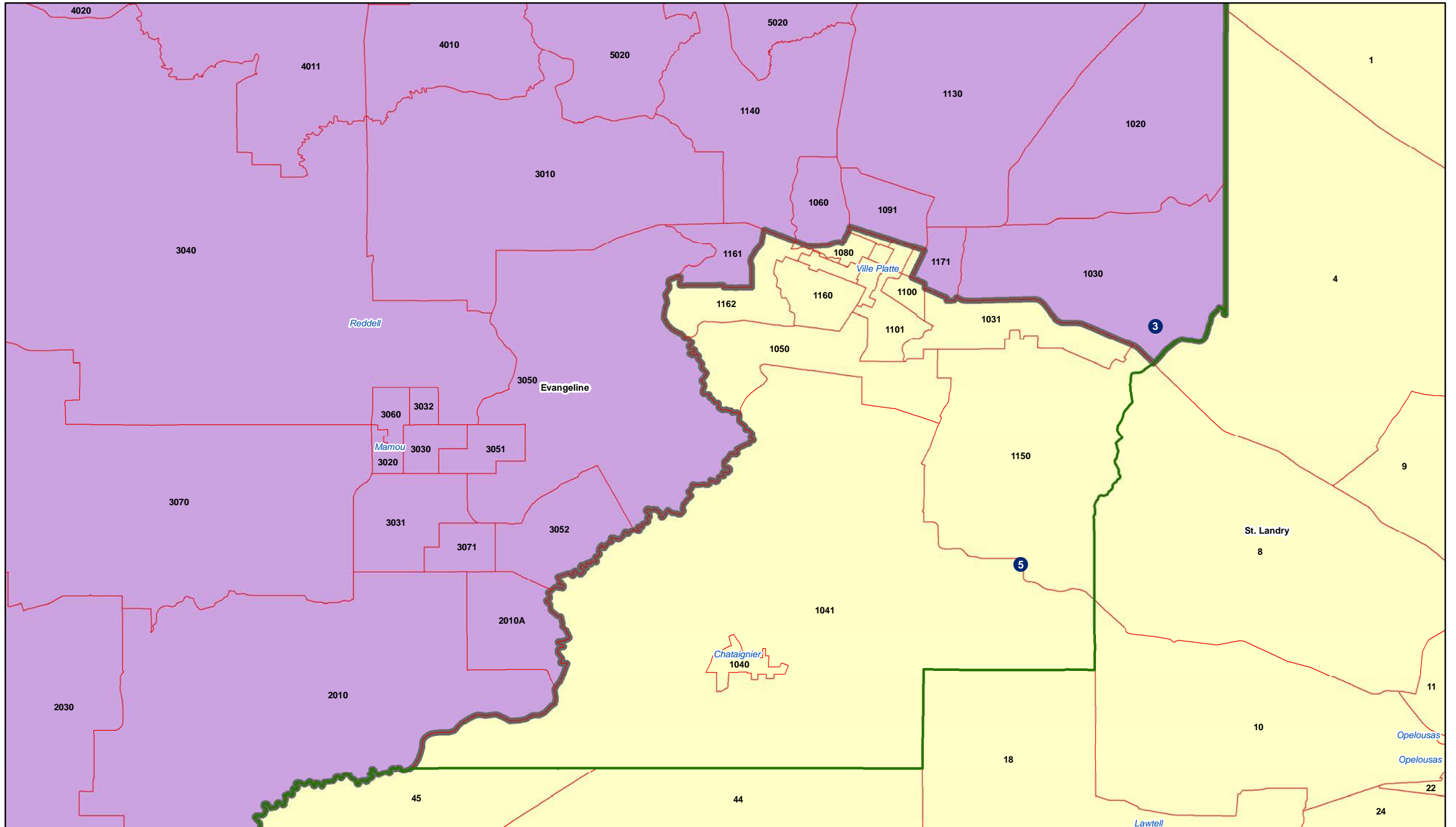




# Congress -Lafayette

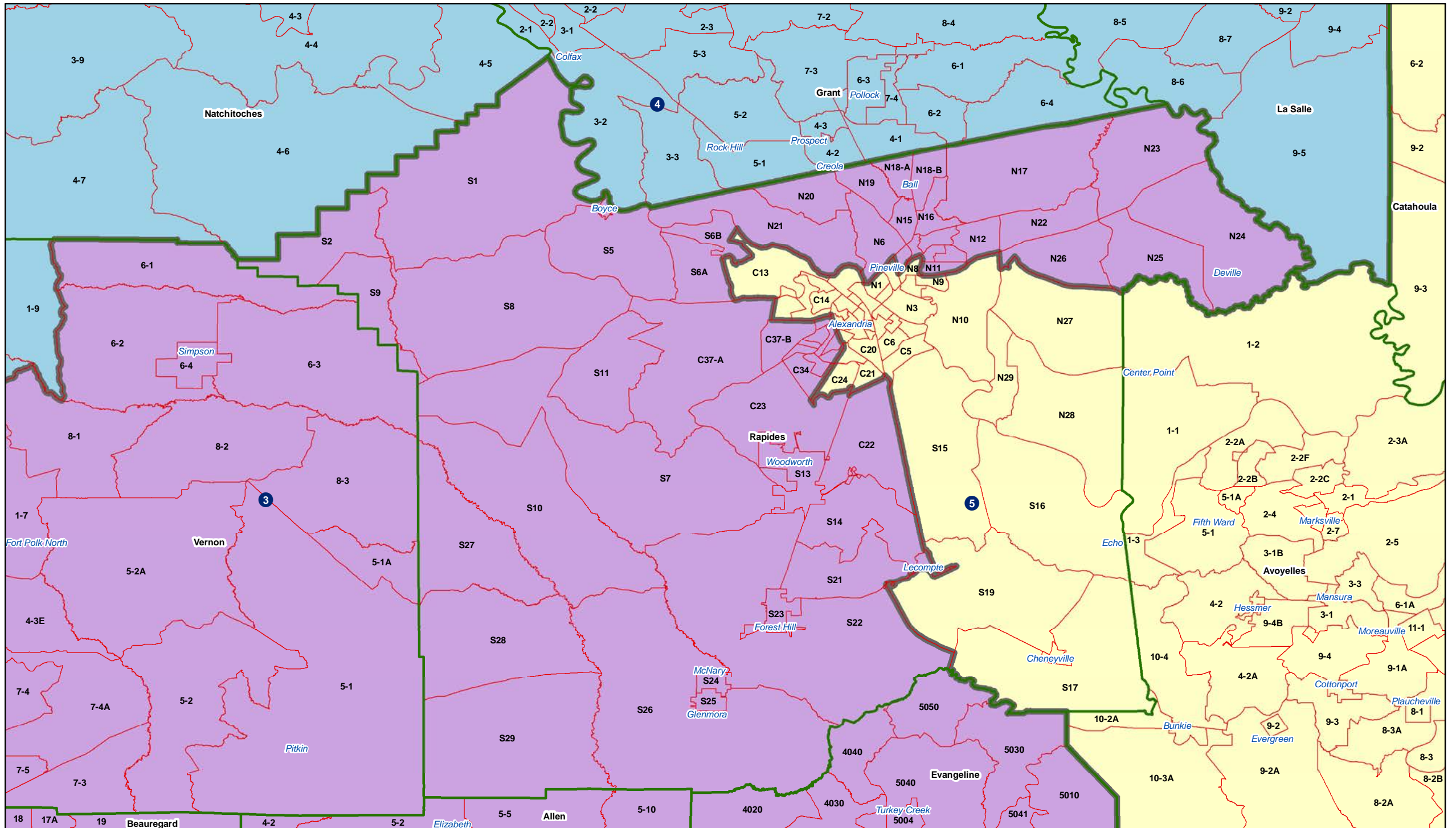


# Congress -Evangeline (part)

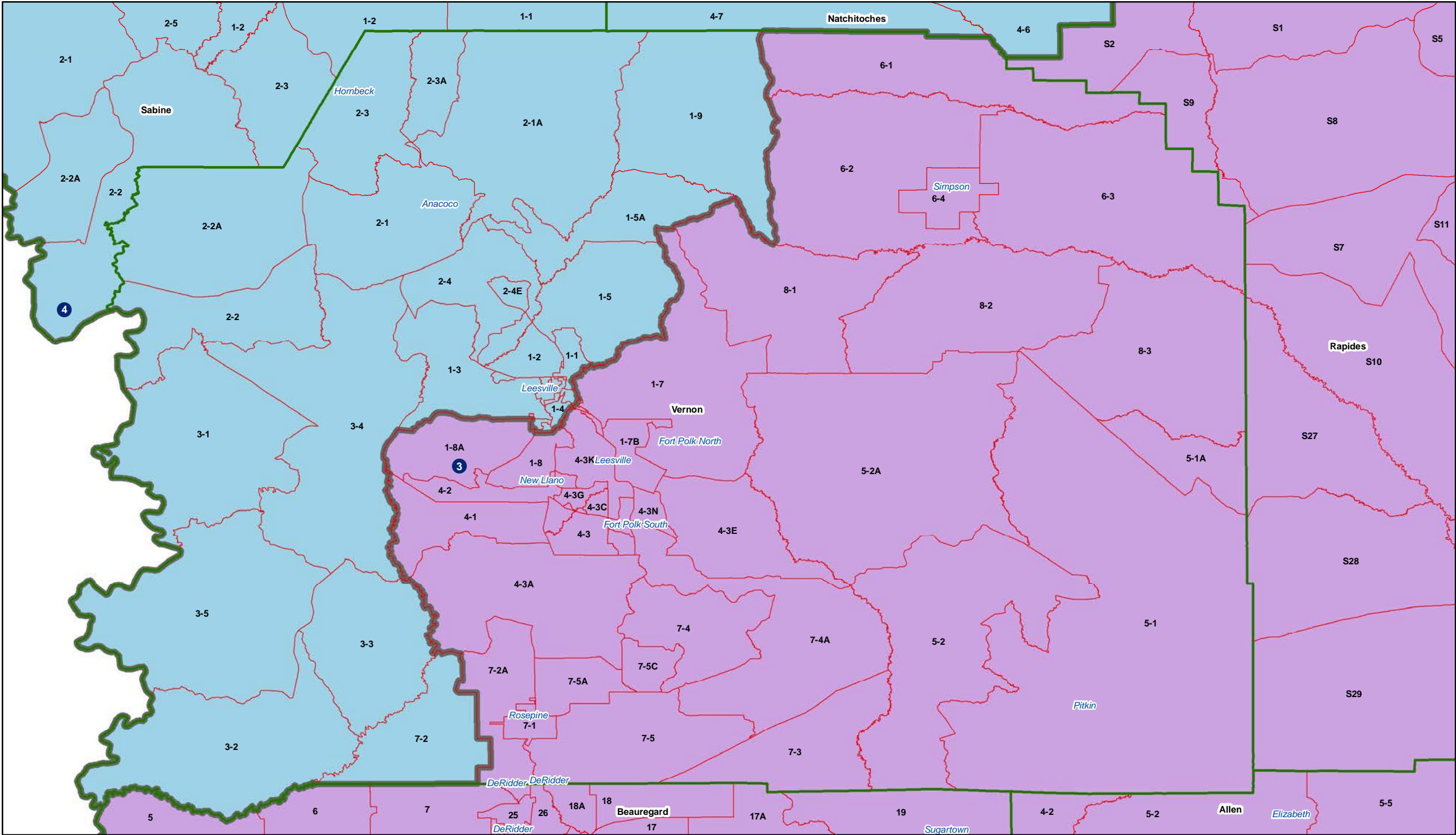




# Congress - Rapides



Congress - Vernon





# Congress - Ouachita

