

2024 Regular Session

SENATE BILL NO. 468

BY SENATOR CONNICK

REAPPORTIONMENT. Provides for the redistricting of the Louisiana Senate. (gov sig)

1 AN ACT

2 To enact R.S. 24:35 and to repeal R.S. 24:35.1, relative to redistricting; to provide for the
3 election districts for the Senate of the Legislature of Louisiana; to provide with
4 respect to other positions and offices which are based upon such districts; to provide
5 for effectiveness; and to provide for related matters.

6 Be it enacted by the Legislature of Louisiana:

7 Section 1. R.S. 24:35 is hereby enacted to read as follows:

8 **§35. Membership of the Senate**

9 **The Senate of the Legislature of Louisiana shall be composed of**
10 **thirty-nine members. The state shall be divided into the following senatorial**
11 **districts and one senator shall be chosen from each of the districts:**

12 **(1) District 1 is composed of Precincts 9-45 and 9-45A of Orleans Parish;**
13 **Precincts 33, 41, 43, 51, 52, 53, 54 and 55 of St. Bernard Parish and Precincts**
14 **602, 603, 604, 606, 609, 801, 802, 802A, 803, 804, 805, 806, 807, 808, 809, 810,**
15 **811, 812, 813, 814, 815, 815A, 816, 817, 818, 901, 902, 903, 903A, 904, 905, 906,**
16 **907, 909, 909A, 910, 911, 913, 914, 915, 916, 917, 918, 921, 922, P01, S01, S02,**
17 **S03, S04, S05, S06, S07, S08, S09, S10, S11, S13, S15, S16, S17, S18, S19, S21,**

1 S22, S23 and S24 of St. Tammany Parish.

2 (2) District 2 is composed of Precincts 28, 30, 36, 37, 38, 39, 44, 45, 47, 48,
3 50, 51, 52, 53, 54, 55 and 57 of Ascension Parish; Precincts 1-1, 1-2, 1-3, 2-1, 2-2,
4 2-5, 4-1, 4-2, 4-3, 5-1, 5-2, 5-5, 6-1, 6-2, 6-3 and 7-1 of Assumption Parish;
5 Precincts 1, 3, 6, 7, 9, 10, 10B, 11, 12, 13, 14A, 15, 16, 19, 20, 21, 22 (Part) Tract
6 952702 - Blocks 1014, 1015, 1016 and 1019; 22B of Iberville Parish; Precincts
7 1-2, 1-4, 1-6, 2-1, 2-1A, 2-3, 2-5, 2-7, 2-9, 2-10, 2-11, 2-16, 5-1, 5-1A and 5-3 of
8 Lafourche Parish; Precincts 1, 2, 5, 6, 7, 12, 13, 14, 15, 16, 17, 18 and 19 of St.
9 James Parish; Precincts 1-1, 1-2, 1-3, 1-5, 2-2, 2-5, 3-2, 3-4, 3-7, 4-1, 4-3, 5-1, 5-2,
10 5-3, 6-2, 6-3, 6-4, 7-1, 7-3 and 7-4 of St. John the Baptist Parish and Precincts
11 1B, 1C, 1D, 1E, 4B, 6, 7B, 8, 9, 10, 11, 13A, 13B, 14A, 15 and 17 of West Baton
12 Rouge Parish.

13 (3) District 3 is composed of Precincts 6-1, 6-2, 7-1, 7-4, 7-23, 7-24, 7-25,
14 7-25A, 7-28A, 7-29, 7-30, 7-32, 7-33, 7-35, 7-37, 7-40, 8-1, 8-2, 8-4, 8-6, 8-7, 8-8,
15 8-13, 8-14, 8-15, 8-19, 8-20, 8-21, 8-22, 8-23, 8-24, 8-25, 8-26, 8-27, 9-1, 9-3, 9-4,
16 9-5, 9-6, 9-7, 9-8, 9-9, 9-10, 9-11, 9-12, 9-13, 9-14, 9-15, 9-16, 9-17, 9-19, 9-21,
17 9-23, 9-28, 9-29, 9-30, 9-30A, 9-31, 9-31A, 9-31B, 9-31D (Part) Tract 001701 -
18 Blocks 1002, 1003, 1004, 1005, 1006, 1007, 1008, 1013, 1014, 1015, 1016, 1017,
19 1018, 2015, 2016, 2017, 2018; 9-32, 9-39, 9-39B, 9-40, 9-40A, 9-40C, 9-41, 9-41A,
20 9-41B, 9-41C, 9-41D, 9-44G, 9-44I, 9-44M, 9-44N, 9-44O, 9-44P and 9-44Q of
21 Orleans Parish and Precincts 10, 11, 12, 13, 14, 15, 20, 21, 22, 23, 24, 25, 30, 31,
22 32, 34, 40, 42, 42A, 44, 45, 46 and 50 of St. Bernard Parish.

23 (4) District 4 is composed of Precincts 3-9, 3-12, 3-14, 3-15, 3-19, 3-20,
24 4-2, 4-6, 4-7, 4-8, 4-9, 4-11, 4-14, 4-15, 4-17, 4-17A, 4-18, 4-20, 4-21, 4-22, 4-23,
25 5-1, 5-2, 5-3, 5-8, 5-9, 5-10, 5-11, 5-12, 5-13, 5-15, 5-16, 5-17, 5-18, 6-4, 6-8, 6-9,
26 7-2, 7-5, 7-7, 7-8, 7-9A, 7-12, 7-17, 7-18, 7-19, 7-21, 7-26, 7-27, 7-27B, 7-28,
27 7-37A, 7-41, 7-42, 8-9, 8-12, 8-28, 8-30, 9-25, 9-26, 9-28C, 9-31D (Part) Tract
28 001701 - Blocks 1000, 1001, 2000, 2001, 2002, 2003, 2004, 2005, 2006, 2007, 2008,
29 2011, 2012, 2013, 2014, 2019, 2020, 2023, 2024, 2025, 2034 and 9-33, 9-34A, 9-35,

1 9-35A, 9-36, 9-36B, 9-37, 9-38, 9-38A, 9-42, 9-42C, 9-43A, 9-43B, 9-43C, 9-43E,
 2 9-43F, 9-43G, 9-43H, 9-43I, 9-43J, 9-43K, 9-43L, 9-43M, 9-43N, 9-44, 9-44A,
 3 9-44B, 9-44D, 9-44E, 9-44F, 9-44J, 9-44L, 17-17, 17-18, 17-18A, 17-19 and 17-20
 4 of Orleans Parish.

5 (5) District 5 is composed of Precincts 131, 133, 171, 173, 179B, 180, 181,
 6 187, 188, 191, 200 and 201 of Jefferson Parish and Precincts 1-1, 1-2, 1-5, 1-6,
 7 2-1, 2-2, 2-4, 2-6, 2-7, 3-1, 3-8, 3-18, 4-3, 5-5, 5-7, 6-6, 6-7, 7-6, 7-10, 7-11, 7-13,
 8 7-14, 7-15, 7-16, 7-20, 10-3, 10-6, 10-7, 10-8, 10-9, 10-11, 10-12, 10-13, 10-14,
 9 11-2, 11-3, 11-4, 11-5, 11-8, 11-9, 11-10, 11-11, 11-12, 11-13, 11-14, 11-17, 12-1,
 10 12-2, 12-3, 12-4, 12-5, 12-6, 12-7, 12-9, 12-10, 12-11, 12-12, 12-13, 12-14, 12-16,
 11 12-17, 12-19, 13-1, 13-2, 13-3, 13-4, 13-5, 13-6, 13-7, 13-8, 13-9, 13-10, 13-11,
 12 13-12, 13-13, 13-14, 13-15, 13-16, 14-17, 14-20, 14-21, 14-23, 14-24A, 14-25,
 13 14-26, 16-4, 16-5, 16-6, 16-7, 16-8, 16-9, 17-2, 17-3, 17-4, 17-5, 17-6, 17-7, 17-8,
 14 17-9, 17-10, 17-11, 17-12, 17-13, 17-13A, 17-14, 17-15 and 17-16 of Orleans
 15 Parish.

16 (6) District 6 is composed of Precincts 1-98, 2-6, 2-7, 2-8, 2-21, 2-26, 2-28,
 17 2-33, 3-1, 3-2, 3-3, 3-6, 3-9, 3-10, 3-12, 3-14, 3-15, 3-16, 3-21, 3-22, 3-25, 3-26,
 18 3-28, 3-30, 3-32, 3-33, 3-34, 3-37, 3-38, 3-43, 3-45, 3-46, 3-47, 3-53, 3-58, 3-61,
 19 3-66, 3-71, 3-72 and 3-73 of East Baton Rouge Parish; Precincts 9, 10, 11A, 12,
 20 13A, 13B, 14, 15, 31, 32 and 38 of Livingston Parish and Precincts 1-2, 2-1, 2-2,
 21 3-1, 3-2, 4-1, 4-2, 5-1, 6-1 and 6-2 of St. Helena Parish.

22 (7) District 7 is composed of Precincts 195, 196, 197A, 197B, 205, 211,
 23 212, 213A, 213B, 213C, 214A, 214B, 215, 216A, 216B, 216C, 217, 225, 226, 228,
 24 231, 232A, 232B, 238A, 238B, 1-G, 2-G, 4-G, 6-G, 7-G, 8-G and 11-G of
 25 Jefferson Parish; Precincts 15-1, 15-2, 15-3, 15-5, 15-6, 15-8, 15-9, 15-10, 15-11,
 26 15-12, 15-12A, 15-13, 15-13A, 15-13B, 15-14, 15-14A, 15-14B, 15-14C, 15-14D,
 27 15-14E, 15-14F, 15-14G, 15-15, 15-15A, 15-15B, 15-16, 15-17, 15-17A, 15-17B,
 28 15-18, 15-18A, 15-18B, 15-18C, 15-18D, 15-18E, 15-18F, 15-19, 15-19A, 15-19B
 29 and 15-19C of Orleans Parish and Precincts 1-1, 1-2, 1-3, 7-1 and 7-2 of

Plaquemines Parish.

(8) District 8 is composed of Precincts 151, 152, 153, 154, 155, 156, 157A, 157B, 170, 172, 174, 175, 176, 177, 178, 179A, 182, 183, 184, 185A, 185B, 189, 190, 192, 193A, 193B, 194A, 194B, 198, 199, 202, 203, 204, 210, 227, 229, 230, 234, 235, 236, 237, 246, 247, 248, 3-G, 5-G, 9-G, 10-G, 12-G, 13-G, 1-GI, 1-L, 1-W, 2-W, 3-W, 4-W, 5-W, 6-W and 7-W of Jefferson Parish and Precincts 2-1, 3-1, 4-1, 5-1, 5-1A, 6-1, 6-1A, 6-2, 8-1, 8-2, 9-1 and 9-2 of Plaquemines Parish.

(9) District 9 is composed of Precincts 14, 15, 16, 17, 18, 19, 20, 23, 24, 25, 26, 27, 28, 29, 30, 31, 32, 33, 34, 35, 36, 37, 38, 39, 40, 41, 42, 43, 44, 45, 46, 69, 70, 71, 72, 73, 74, 75, 76, 77, 78, 79, 80, 81, 82, 83, 84, 85, 86, 87, 88, 89, 90, 91, 92, 93, 94, 95, 96, 97, 98, 99, 100, 101, 102, 103, 105, 106, 127, 128, 129, 130, 132, 134, 136 and 138 of Jefferson Parish and Precincts 14-1, 14-2, 14-3, 14-4, 14-5, 14-6, 14-7, 14-8, 14-9, 14-10, 14-11, 14-12, 14-13A, 14-14, 14-15, 14-16, 14-18A, 14-19, 16-1, 16-1A, 16-2, 16-3 and 17-1 of Orleans Parish.

(10) District 10 is composed of Precincts 1, 2, 3, 4, 5, 7, 8, 9, 10, 11, 12, 13, 21, 22, 51, 52, 53, 54, 55, 56, 57, 58, 59, 60, 61, 62, 63, 64, 65, 66, 67, 68, 108, 116, 117, 118, 119, 120, 121, 122, 123, 124, 125A, 125B, 126, 1-H, 2-H, 3-H, 4-H, 5-H, 6-H, 7-H, 8-H, 9-H, 1-K, 2-K, 3-K, 4-K, 5-K, 6-KA, 6-KB, 7-KA, 7-KB, 8-K, 9-K, 10-K, 11-K, 12-K, 15-K, 16-K, 17-K, 18-K, 19-K, 20-K, 25-K, 26-K (Part) Tract 020600 - Blocks 2000, 2011, 2012, 2036, 2039, 2040, 4016 and 4017; Tract 980000 - Blocks 1000, 1001, 1002, 1003, 1004 and 34-K and 35-K of Jefferson Parish.

(11) District 11 is composed of Precincts 103, 104, 105, 106, 106A, 107, 108, 110, 111, 112, 113, 114, 115, 116, 118, 301, 304, 305, 306, 307, 308, 309, 310, 312, 312A, 313, 314, 403, 404, 405, 406, 407, 408, 409, 410, 411, 412, 413, 414, 415, 416, 417, 418, 419, 420, 422, 426, 427, 429, 430, 605, 701, 702, 703, 704, 705, 706, C01, C02, C03, C04, C06, C07, C08, C09, C11, M02, M04, M07, M09, M09A and M10 of St. Tammany Parish.

(12) District 12 is composed of Precincts 101, 201, 202, 203, 204, 205, 206, 207, 302, 303, 501, 502, 503, 504, 505, A01, A02, A02A, A03, A04 and F01 of St.

1 Tammany Parish; Precincts 2, 6, 11, 15, 16, 17, 101, 102, 104, 105, 106, 106A,
2 107, 108, 110, 112, 114, 115B, 116, 118, 118A, 119, 120, 120A and 123 of
3 Tangipahoa Parish and Washington Parish.

4 (13) District 13 is composed of Precincts 1, 1A, 1B, 1C, 1D, 2, 2A, 3, 3A,
5 3B, 4, 4A, 4B, 5, 5A, 5B, 5D, 6, 6A, 6B, 7, 7A, 7B, 7C, 7D, 8A, 8B, 19, 19A, 20, 21,
6 21A, 21B, 22, 23, 23A, 23B, 23C, 24, 24B, 24C, 24D, 25, 26, 26A, 26B, 26C, 27,
7 28, 29, 35, 35A, 36, 36A, 39, 39A, 39B, 40, 40A and 41 of Livingston Parish.

8 (14) District 14 is composed of Precincts 1-1, 1-3, 1-4, 1-5, 1-6, 1-7, 1-10,
9 1-13, 1-14, 1-15, 1-16, 1-17, 1-18, 1-19, 1-21, 1-22, 1-23, 1-24, 1-25, 1-26, 1-27,
10 1-28, 1-29, 1-30, 1-31, 1-32, 1-36, 1-37, 1-38, 1-39, 1-45, 1-46, 1-50, 1-51, 1-57,
11 1-58, 1-59, 1-61, 1-62, 1-63, 1-64, 1-65, 1-67, 1-68, 1-73, 1-76, 1-85, 1-100, 1-102,
12 1-107, 3-5, 3-20, 3-23, 3-44, 3-50, 3-55, 3-56, 3-57, 3-63, 3-65, 3-69, 3-70, 3-75 and
13 3-76 of East Baton Rouge Parish.

14 (15) District 15 is composed of Precincts 1-2, 1-9, 1-11, 1-20, 1-54, 1-55,
15 1-60, 1-70, 1-71, 1-77, 1-78, 1-81, 1-82, 1-83, 1-84, 1-86, 1-87, 1-88, 1-91, 1-92,
16 1-93, 1-94, 1-95, 1-96, 1-97, 1-101, 1-104, 2-1, 2-2, 2-3, 2-4, 2-5, 2-9, 2-10, 2-11,
17 2-12, 2-13, 2-14, 2-15, 2-16, 2-17, 2-18, 2-19, 2-20, 2-22, 2-23, 2-24, 2-25, 2-27,
18 2-30, 2-31, 2-34, 2-38, 3-8, 3-24, 3-42 and 3-54 of East Baton Rouge Parish.

19 (16) District 16 is composed of Precincts 1-8, 1-12, 1-33, 1-34, 1-35, 1-40,
20 1-41, 1-42, 1-43, 1-44, 1-47, 1-48, 1-49, 1-52, 1-53, 1-56, 1-66, 1-69, 1-72, 1-74,
21 1-75, 1-79, 1-80, 1-89, 1-90, 1-99, 1-103, 1-105, 3-4, 3-7, 3-11, 3-13, 3-17, 3-18,
22 3-19, 3-27, 3-29, 3-31, 3-35, 3-36, 3-39, 3-40, 3-41, 3-48, 3-49, 3-51, 3-52, 3-59,
23 3-60, 3-62, 3-64, 3-67, 3-68 and 3-74 of East Baton Rouge Parish.

24 (17) District 17 is composed of Precincts 2-29, 2-32, 2-35, 2-36 and 2-37
25 of East Baton Rouge Parish; East Feliciana Parish; Precincts 4, 5, 14, 15A, 15B,
26 17, 18, 22 (Part) Tract 952701 - Blocks 2000, 2001, 2002, 2003, 2004, 2005, 2006,
27 2007, 2008, 2009, 2010, 2011, 2012, 2013, 2014, 2015, 2016, 2017, 2018, 2019,
28 2020, 2021, 2022, 2023, 2024 and 2025; Tract 952702 - Blocks 1017, 1018, 2000,
29 2001, 2002, 2003, 2004, 2005, 2006, 2007, 2008, 2009, 2010, 2011, 2012, 2013,

1 2014, 2015, 2016, 2017, 2018, 2019, 2023, 2024, 2025, 2026, 2027, 2028, 2029,
 2 2030, 2031, 2032, 2045; 24, 25, 26, 27, 28, 29, 31 and 32 of Iberville Parish;
 3 Precincts 122 of Lafayette Parish; Pointe Coupee Parish; Precincts 1-1 of St.
 4 Helena Parish; Precincts 1, 1A, 1B, 1C, 1D, 2, 2A, 2B, 2C, 3, 4, 4A, 4B, 5, 7, 7A,
 5 13, 13A, 14, 14A, 14B, 15, 16, 16A, 17, 27, 28, 29, 29A, 30, 30A, 30B, 31, 36 (Part)
 6 Tract 961900 - Blocks 6004; 37, 37A, 38, 39, 39A and 40 of St. Landry Parish;
 7 Precincts 39, 42 and 43 of St. Martin Parish; Precincts 1A, 2A, 2B, 3, 4A, 5, 7A,
 8 14B, 16, 18, 19, 20, 21 and 22 of West Baton Rouge Parish and Precincts 2, 2A,
 9 2B, 3 and 3A of West Feliciana Parish.

10 (18) District 18 is composed of Precincts 1, 2, 3, 4, 5, 6, 7, 8, 9, 10, 11, 12,
 11 13, 14, 15, 16, 17, 18, 19, 20, 21, 22, 23, 24, 25, 26, 27, 31, 32, 33, 34, 35, 40, 41, 42,
 12 43, 58, 61, 62, 63, 64, 65, 66, 68, 69, 71, 72, 73, 76, 77 and 78 of Ascension Parish;
 13 Precincts 16, 17, 18, 18A, 33, 34 and 43 of Livingston Parish and Precincts 4, 8,
 14 9, 10, 11, 22 and 23 of St. James Parish.

15 (19) District 19 is composed of Precincts 104, 115, 150, 13-KA, 13-KB,
 16 14-K, 21-K, 22-K, 23-K, 24-K, 26-K (Part) Tract 028300 - Blocks 1020, 1021,
 17 1022, 1023, 1024, 1025, 1026, 1027, 1029, 1030, 1031, 1032, 1033, 1067, 3013,
 18 3014, 3017, 3018, 3019, 3051; 27-K, 28-K, 29-K, 30-K, 31-K and 33-K of
 19 Jefferson Parish; Precincts 2-2, 2-6, 2-8, 2-15, 3-1, 3-2, 3-4, 3-5, 3-6, 4-1, 6-1, 6-2,
 20 6-3, 6-4, 6-5, 7-1, 7-2, 7-3, 7-4 and 8-1 of Lafourche Parish; St. Charles Parish
 21 and Precincts 1-4, 1-6, 1-7, 2-1, 2-3, 2-4, 3-1, 3-3, 4-2, 4-4, 4-5, 5-4, 5-5, 6-1, 6-5
 22 and 7-2 of St. John the Baptist Parish.

23 (20) District 20 is composed of Precincts 2-12 (Part) Tract 020202 -
 24 Blocks 2000, 2001, 2002, 2004, 2018, 2020, 2022, 2024, 2025, 2026, 2027, 2028,
 25 2029, 2030, 2031, 2032, 2033, 3000, 3001, 3002, 3003, 3004, 3005, 3006, 3007,
 26 3008, 3009, 3010, 3011, 3012, 3013, 3014, 3015, 3016, 3017, 3018, 3019, 3020,
 27 3021, 3022, 3023, 3024, 3025, 3026, 3027, 3028, 3029, 3030, 3031, 3032, 3033,
 28 3034, 3035, 3036, 3037, 3038, 3039, 3040; 2-13, 3-3, 3-7, 4-2, 4-3, 4-4, 4-5, 4-6,
 29 9-1, 9-2, 10-1, 10-2, 10-3, 10-4, 10-6, 10-8, 10-9, 10-10, 10-11, 10-12, 10-13, 10-14,

1 10-15, 10-16, 11-1, 11-2, 11-3, 11-4 and 11-5 of Lafourche Parish and Precincts
 2 14, 15, 16, 18, 19, 20, 21, 23, 25, 27, 29, 31, 34, 35, 38, 41, 42, 43, 45, 48, 49, 52, 53,
 3 55, 56, 57, 58, 59, 60, 62, 63, 68, 69, 71, 72, 73, 74, 81, 83, 84, 85, 88, 90, 94, 95,
 4 100, 110 and 115 of Terrebonne Parish.

5 (21) District 21 is composed of Precincts 2-3, 2-4, 3-1, 3-2, 4-4, 5-3, 7-2,
 6 7-3, 8-1 and 9-1 of Assumption Parish; Precincts 8-3, 9-1, 9-4, 10-1, 10-4, 11-1,
 7 11-3, 11-6, 12-1, 12-2, 12-3 and 12-4 of Iberia Parish; Precincts 1-1, 1-3, 1-5, 2-12
 8 (Part) Tract 022000 - Blocks 1000; 2-14 and 5-2 of Lafourche Parish; Precincts
 9 1 and 2 of St. Martin Parish; St. Mary Parish and Precincts 1, 2, 5, 7, 8, 10, 11,
 10 12, 17, 28, 30, 33, 37, 39, 40, 51, 64, 65, 67, 76 and 87 of Terrebonne Parish.

11 (22) District 22 is composed of Precincts 1-1, 1-3, 1-7, 1-8, 2-1, 2-2, 2-3,
 12 3-2, 3-3, 3-4, 3-5, 4-1, 4-2, 4-3, 5-1, 5-2, 5-3, 5-5, 6-1, 6-2, 6-4, 6-5, 7-1, 7-2, 7-4,
 13 7-5, 8-1, 8-2, 9-2, 9-5, 10-2, 10-3, 11-4, 11-5, 13-1, 13-2, 13-3, 13-4, 13-5, 14-1,
 14 14-3, 14-4 and 14-5 of Iberia Parish; Precincts 91, 92, 93, 94, 95, 96, 98, 99, 100,
 15 109, 126, 127, 130 and 131 of Lafayette Parish and Precincts 3, 4, 5, 6, 7, 8, 9, 10,
 16 11, 12, 13, 14, 15, 16, 17, 18, 19, 20, 21, 22, 23, 26, 27, 28, 29, 30, 31, 32, 35, 36, 37,
 17 38, 40 and 41 of St. Martin Parish.

18 (23) District 23 is composed of Precincts 8, 25, 26, 29, 30, 31, 32, 33, 34,
 19 38, 39, 40, 41, 42, 43, 44, 45, 46, 47, 48, 49, 67, 69, 70, 71, 72, 73, 74, 75, 76, 77, 78,
 20 79, 80, 81, 82, 83, 84, 85, 86, 87, 88, 89, 90, 97, 101, 102, 103, 104, 105, 106, 107,
 21 108, 110, 111, 114, 115, 116, 117, 118, 119, 120, 121, 124, 125, 128, 133, 134, 135
 22 and 136 of Lafayette Parish.

23 (24) District 24 is composed of Precincts 1, 2, 3, 4, 5, 6, 7, 9, 10, 11, 12, 13,
 24 14, 15, 16, 17, 18, 19, 20, 21, 22, 23, 24, 50, 51, 52, 53, 54, 55, 56, 57, 58, 59, 60, 61,
 25 63, 64, 65, 66, 68, 112, 113, 123 and 129 of Lafayette Parish; Precincts 6, 8, 9,
 26 9A, 10, 10A, 11, 11B, 12, 18, 18A, 18B, 19, 19A, 20, 20B, 21, 21A, 22, 22B, 23,
 27 23A, 24, 24B, 25, 26, 26A, 32, 32A, 33, 33A, 34, 34A, 35, 36 (Part) Tract 961701
 28 - Blocks 4031 and 4032 and 4033; Tract 961801 - Blocks 5002; Tract 961900 -
 29 Blocks 3005, 3006, 3007, 3008, 3009, 3010, 3011, 3012, 3013, 3014, 3015, 3016,

1 3017, 4000, 4001, 4002, 4003, 4004, 4005, 4006, 4008, 4011, 4012, 6000, 6001,
 2 6003, 7013, 7014, 7015, 7016, 7017, 7018, 7019, 7022, 7023; 41, 41A, 42, 43, 44,
 3 44A, 44B, 50, 50A, 51 and 51A of St. Landry Parish and Precincts 24, 25, 33 and
 4 34 of St. Martin Parish.

5 (25) District 25 is composed of Precincts 4-1, 4-3, 4-5, 5-1, 5-3 and 5-4 of
 6 Acadia Parish; Precincts 260, 261, 262, 324, 327, 328, 329, 330, 332N, 332S, 333,
 7 334, 335, 336, 337, 338, 339, 340, 362, 363, 364, 365, 366, 367, 368, 369, 370,
 8 371N, 371S, 372, 800, 801, 860N, 860S, 861E and 861W of Calcasieu Parish;
 9 Cameron Parish and Jefferson Davis Parish.

10 (26) District 26 is composed of Precincts 1-1, 1-2, 1-3, 1-4, 1-5, 1-6, 1-7,
 11 1-8, 2-1, 2-2, 2-3, 2-4, 2-5, 3-1, 3-2, 3-3, 3-4, 3-5, 3-7, 4-2, 4-4, 4-6, 5-2, 5-5, 6-1,
 12 6-2, 6-3, 6-4, 6-5, 6-6, 6-7, 6-8, 6-10, 6-12, 6-13, 6-14, 6-15, 6-16, 7-2, 7-3 and 7-4
 13 of Acadia Parish; Precincts 27, 28, 35, 36 and 37 of Lafayette Parish and
 14 Vermilion Parish.

15 (27) District 27 is composed of Precincts 160E, 160W, 161, 162E, 162W,
 16 163, 164, 165, 166E, 166W, 167, 300, 301, 302, 303, 304, 305, 306, 307, 308, 309E,
 17 309W, 310, 311, 312, 313E, 313W, 314, 315E, 315W, 316E, 316W, 317, 318,
 18 319N, 319S, 320E, 320W, 321, 322, 323, 325, 326, 331, 360, 361, 400, 401, 402,
 19 403, 404, 405, 406, 407, 408, 440, 441, 460E, 461, 463, 464, 466E, 466W, 467, 468,
 20 469 and 664 of Calcasieu Parish.

21 (28) District 28 is composed of Allen Parish; Precincts 1-3, 1-3A, 2-1,
 22 2-1A, 2-2B, 2-2C, 2-2F, 2-4, 2-4A, 2-5, 2-7, 2-8, 3-1, 3-1B, 3-3, 4-1, 4-2, 4-2A,
 23 4-2B, 5-1, 5-1A, 5-1B, 6-1A, 6-1B, 6-2A, 7-1, 7-3, 7-3B, 8-1, 8-2A, 8-2B, 8-3, 8-3A,
 24 9-1A, 9-2, 9-2A, 9-3, 9-4, 9-4B, 9-5B, 10-2A, 10-3A, 10-3B, 11-1 and 11-2A of
 25 Avoyelles Parish; Evangeline Parish; Precincts C23, C30, C31, C33, C34, C35,
 26 C36, C37-B, C41, C42, S13, S22 and S23 of Rapides Parish and Precincts 45, 46,
 27 47, 48, 49 and 52 of St. Landry Parish.

28 (29) District 29 is composed of Precincts 10-2, 10-2B and 10-4 of
 29 Avoyelles Parish; Precincts 1-2, 1-3, 1-6, 2-3, 2-4, 2-5 and 7-4 of Bienville Parish;

1 Precincts 1-1, 1-2, 1-3, 1-4, 2-1, 2-2, 3-1, 3-2 and 3-3 of Grant Parish; Precincts
 2 16, 17, 17A, 18, 19A, 19AI, 20, 20A, 25, 25A and 25B of Jackson Parish;
 3 Precincts 1-1, 1-2, 1-3, 2-1, 3-1, 3-3, 6-4, 6-5, 6-6, 8-3, 9-1, 9-2, 9-3, 9-4, 10-1,
 4 10-2, 10-4, 10-5, 10-6, 11-1, 11-3, 11-4, 11-5, 12-1, 12-2, 12-3, 12-4 and 12-6 of
 5 Lincoln Parish; Precincts 1-1, 1-2, 1-3, 1-3A, 1-4, 1-5, 1-5A, 1-8, 1-13, 1-14, 2-7
 6 and 2-8 of Natchitoches Parish; Precincts C1, C2, C3, C4, C5, C6, C7, C8, C9,
 7 C10, C11-A, C11-B, C13, C14, C15, C17, C18, C19, C20, C21, C22, C24, C25,
 8 C26, C27, C28, C32, C38-A, C38-B, C39, C40, N1, N2, N3, N4, N5, N6, N8, N9,
 9 N11, N21, S4, S6A, S6B, S14, S17, S18, S19, S20 and S21 of Rapides Parish and
 10 Precincts 1-1, 1-3, 1-5, 2-1, 2-3, 3-1A, 5-1, 5-2, 5-3, 6-1, 6-1A, 7-1, 7-1A and 7-2A
 11 of Winn Parish.

12 (30) District 30 is composed of Beauregard Parish; Precincts 460W, 465,
 13 560, 561, 562, 600, 601, 602, 603, 660, 661, 662, 663, 700, 701, 702, 703, 760, 761
 14 and 762 of Calcasieu Parish; Precincts S2, S7, S9, S10, S24, S25, S26, S27, S28
 15 and S29 of Rapides Parish and Vernon Parish.

16 (31) District 31 is composed of Precincts 1-4, 1-5, 1-7, 3-2, 3-3, 3-4, 3-5,
 17 4-1, 4-2, 4-3, 5-1, 5-2, 5-3, 5-4, 6-1, 6-2, 6-3, 6-4, 6-5, 7-1, 7-2 and 7-3 of Bienville
 18 Parish; Precincts 1-2, 1-3, 1-3A, 1-3B, 1-4, 1-5, 4-8A, 4-8B, 4-8E, 4-8G and 4-10
 19 of Bossier Parish; Precincts 8-6, 8-8, 8-9, 9-1, 9-2, 9-3, 9-8, 9-12 and 9-13 of
 20 Caddo Parish; Precincts 1, 4, 5, 5A, 6, 6A, 6B, 9, 26, 26A, 38, 38A, 42, 44, 48, 51,
 21 53, 55, 56, 59, 60, 60A, 63 and 63A of De Soto Parish; Precincts 1-1A, 1-4A, 1-6,
 22 1-7, 1-9, 1-9A, 1-10, 1-10A, 1-10B, 1-11, 1-12, 2-1, 2-2, 2-3, 2-4, 2-5, 2-6, 2-7A,
 23 2-9, 3-1, 3-2, 3-3, 3-4, 3-5, 3-6, 3-7, 3-8, 3-9, 3-10, 4-1, 4-2, 4-3, 4-4, 4-5, 4-6, 4-7,
 24 4-8 and 4-9 of Natchitoches Parish; Precincts C37-A, S1, S5, S8 and S11 of
 25 Rapides Parish; Red River Parish; Sabine Parish; Precincts 32, 34, 35, 36, 38,
 26 39 and 40 of Webster Parish and Precincts 3-1B, 3-2, 3-3, 4-1, 4-2, 4-3 and 4-5
 27 of Winn Parish.

28 (32) District 32 is composed of Precincts 1-1, 1-2, 2-2, 2-2A, 2-2D, 2-3A,
 29 2-5E and 6-2 of Avoyelles Parish; Caldwell Parish; Catahoula Parish; Precincts

1 1-3A, 2-1, 3-1, 3-2, 3-3, 3-4, 4-1, 4-2, 4-3 (Part) Tract 000202 - Blocks 1018, 1020;
 2 5-4, 5-5 and 5-6 of Concordia Parish; Franklin Parish; La Salle Parish;
 3 Precincts 57 and 58 of Ouachita Parish; Precincts N10, N12, N13-A, N13-B,
 4 N14-B, N22, N23, N24, N25, N26, N27, N28, N29, S15 and S16 of Rapides
 5 Parish; Precincts 3 and 4 of Richland Parish and Precincts 1, 1A, 1B, 4, 5, 6, 6A,
 6 7, 7A, 8, 8A, 8C, 9, 10, 10A, 10B, 11, 11A, 12, 12A, 12B and 13 of West Feliciana
 7 Parish.

8 (33) District 33 is composed of Precincts 1-1, 2-1, 2-2, 3-1, 3-6 and 3-7 of
 9 Bienville Parish; Claiborne Parish; Precincts 3-2, 3-4, 3-5, 3-6, 4-1, 4-2, 4-3, 4-4,
 10 4-5, 5-2 and 6-2 of Lincoln Parish; Precincts 23, 26-1, 27, 27-1, 29, 32, 35, 39-1,
 11 40, 42, 45, 47, 48, 50 and 51 of Morehouse Parish; Precincts 1, 1A, 2, 4, 6, 7, 8,
 12 9, 35, 36, 37, 41, 43, 44, 44A, 49, 50, 51, 51A, 53 and 76 of Ouachita Parish;
 13 Union Parish; Precincts 1, 1A, 2, 2A, 2B, 3, 4, 5, 6, 9, 9A, 10 and 14 of Webster
 14 Parish and West Carroll Parish.

15 (34) District 34 is composed of Precincts 1-1, 1-2, 1-3, 1-4, 4-3 (Part)
 16 Tract 000201 - Blocks 2018, 2019, 2023 and 2024; Tract 000202 - Blocks 1000,
 17 1001, 1002, 1003, 1006, 1007, 1008, 1019, 1023, 1024, 1025; 4-4 and 5-1 of
 18 Concordia Parish; East Carroll Parish; Madison Parish; Precincts 1, 1-1, 3-1,
 19 3-2, 6, 7, 7-1, 8, 12, 13, 13-1, 14, 16, 16-1, 20, 21, 21-1, 24, 31, 31-1, 37, 39-2, 53,
 20 53-1 and 54 of Morehouse Parish; Precincts 3, 5, 9A, 10, 11, 12, 13, 14, 15, 16,
 21 17, 18, 19, 20, 21, 22, 23, 24, 25, 26, 65, 65A, 66, 67, 68, 69, 70, 72, 73, 74 and 79
 22 of Ouachita Parish; Precincts 1, 2, 8, 10, 11, 12, 12B, 13, 17, 18, 23, 25, 26, 27,
 23 28, 30, 31, 32, 33, 34 and 35 of Richland Parish and Tensas Parish.

24 (35) District 35 is composed of Precincts 2-3, 2-5, 2-6, 4-1, 4-2, 4-3, 5-1,
 25 5-2, 5-3, 6-1, 6-2, 6-3, 6-4, 7-1, 7-2, 7-3, 7-5, 7-6, 8-1, 8-2, 8-3 and 8-4 of Grant
 26 Parish; Precincts 1, 2, 3, 4, 5, 5A, 6, 6A, 7, 8, 8A, 9, 10, 10A, 11, 11A, 13, 13A, 15
 27 and 22 of Jackson Parish; Precincts 4-6, 5-1, 5-3, 5-4, 6-1, 6-3, 7-1, 7-2, 8-1, 8-2
 28 and 10-3 of Lincoln Parish; Precincts 27, 28, 30, 31, 32, 33, 34, 38, 39, 40, 42, 45,
 29 46, 47, 48, 52, 52A, 54, 55, 56, 56A, 59, 60, 61, 62, 63, 64, 71, 75, 77 and 78 of

1 **Ouachita Parish; Precincts N7, N14-A, N15, N16, N17, N18-A, N18-B, N19 and**
 2 **N20 of Rapides Parish and Precincts 5-5, 6-3, 6-6, 7-2 and 7-7 of Winn Parish.**

3 **(36) District 36 is composed of Precincts 1-1, 2-1, 2-1A, 2-2, 2-3, 2-3A,**
 4 **2-4, 2-5A, 2-6, 2-7, 2-8, 2-9, 2-10, 2-11, 2-15, 2-16, 2-17A, 2-17B, 2-18B, 2-18C,**
 5 **2-18D, 2-18F, 2-18G, 2-18H, 2-18I, 2-19, 2-21A, 2-21B, 2-21C, 2-21D, 2-21E,**
 6 **2-22A, 2-22B, 2-22C, 3-1, 3-2, 3-3, 3-4, 4-1A, 4-2, 4-2A, 4-3A, 4-3B, 4-3D, 4-4A,**
 7 **4-4B, 4-5A, 4-6A, 4-6B, 4-7A, 4-7B, 4-8C, 4-9, 4-11A, 4-11B and 4-11C of Bossier**
 8 **Parish and Precincts 8, 11, 12, 13, 15, 16, 17, 17A, 17B, 17C, 18, 18A, 22, 22A,**
 9 **24, 24A, 25, 25A, 26, 27, 28, 29, 29A, 31, 31A, 33, 41, 42 and 43 of Webster**
 10 **Parish.**

11 **(37) District 37 is composed of Precincts 11 and 30 of Livingston Parish;**
 12 **Precincts 102, 401, 402, 421, M01, M06, M08, M11, M12 and MD1 of St.**
 13 **Tammany Parish and Precincts 28, 33, 40A, 41, 42, 43, 44, 45A, 45B, 46, 47, 49,**
 14 **70, 70A, 71, 72, 72A, 73, 74, 109, 111A, 117, 120B, 121, 121A, 122A, 122B, 122C,**
 15 **124, 125, 127, 129A, 133, 133A, 137, 137A, 137B, 137C, 137D, 139, 141, 141A,**
 16 **143, 143A, 145, 147, 149, 149A and 151 of Tangipahoa Parish.**

17 **(38) District 38 is composed of Precincts 1-10, 1-14, 4-4, 4-5, 4-6, 4-7, 4-8,**
 18 **4-9, 4-10, 5-10, 6-1, 6-6, 6-7, 6-8, 6-9, 6-10, 7-10, 8-1, 8-2, 8-3, 8-4, 8-5, 8-7, 9-4,**
 19 **9-5, 9-6, 9-7, 9-9, 9-10, 9-11, 10-2, 10-5, 10-6, 10-7, 10-8, 10-9, 11-1, 11-2, 11-3,**
 20 **11-4, 11-5, 11-6, 11-7, 11-8, 11-9, 11-10, 12-1, 12-3, 12-6, 12-7, 12-8, 12-9, 12-10**
 21 **and 12-11 of Caddo Parish and Precincts 10, 11, 11B, 11C, 16, 16A, 16B, 16C,**
 22 **21, 22, 22A, 23, 28, 30, 30A, 31, 31A, 32, 33, 33A, 34, 34A, 34B, 35, 35A, 35B, 37,**
 23 **37C, 46, 46A, 46B, 49 and 49A of De Soto Parish.**

24 **(39) District 39 is composed of Precincts 2-12A, 2-12B, 2-13, 2-14, 2-20,**
 25 **2-23 and 4-8D of Bossier Parish and Precincts 1-1, 1-2, 1-3, 1-4, 1-5, 1-6, 1-7, 1-8,**
 26 **1-9, 1-11, 1-12, 1-13, 2-1, 2-2, 2-3, 2-4, 2-5, 2-6, 2-7, 2-8, 2-9, 2-10, 2-11, 2-12, 3-1,**
 27 **3-2, 3-3, 3-4, 3-5, 3-6, 3-7, 3-8, 3-9, 4-1, 4-2, 4-3, 5-1, 5-2, 5-3, 5-4, 5-5, 5-6, 5-7,**
 28 **5-8, 5-9, 5-11, 6-2, 6-3, 6-4, 6-5, 7-1, 7-2, 7-3, 7-4, 7-5, 7-6, 7-7, 7-8, 7-9, 10-1, 10-3,**
 29 **10-4, 12-2, 12-4 and 12-5 of Caddo Parish.**

1 Section 2. R.S. 24:35.1 is hereby repealed in its entirety.

2 Section 3. (A) The precincts referenced in this Act are those contained in the file
3 named "2024 Precinct Shapefiles (01-10-2024)" available on the Legislature of Louisiana's
4 website on the effective date of this Section. The 2024 Precinct Shapefiles are based upon
5 those Voting Districts (VTDs) contained in the 2020 Census Redistricting TIGER/Line
6 Shapefiles for the State of Louisiana as those files have been modified and validated through
7 the data verification program of the Louisiana House of Representatives and the Louisiana
8 Senate to represent precinct changes submitted through January 10, 2024, to the Legislature
9 of Louisiana by parish governing authorities pursuant to the provisions of R.S. 18:532 and
10 532.1.

11 (B) When a precinct referenced in this Act has been subdivided by action of the
12 parish governing authority on a nongeographic basis or subdivided by action of the parish
13 governing authority on a geographic basis in accordance with the provisions of R.S.
14 18:532.1, the enumeration in this Act of the general precinct designation shall include all
15 nongeographic and all geographic subdivisions thereof, however such subdivisions may be
16 designated.

17 (C) The territorial limits of the districts as provided in this Act shall continue in
18 effect until changed by law regardless of any subsequent change made to the precincts by
19 the parish governing authority.

20 Section 4. The provisions of this Act shall not reduce the term of office of any person
21 holding any position or office on the effective date of this Section for which the appointment
22 or election is based upon a Senate district as composed pursuant to R.S. 24:35.1. Any
23 position or office that is filled by appointment or election based upon a House of
24 Representatives district and that is to be filled after January 10, 2028, shall be appointed or
25 elected based upon the district as it is described in Section 1 of this Act.

26 Section 5.(A) Solely for the purposes of qualifying for election and the conduct of
27 the election of representatives to the Louisiana Senate at the regularly scheduled election for
28 members of the Louisiana Senate in 2027, the provisions of Section 1 of this Act shall
29 become effective upon signature of this Act by the governor or, if not signed by the

1 governor, upon expiration of the time for bills to become law without signature by the
 2 governor, as provided in Article III, Section 18 of the Constitution of Louisiana. If this Act
 3 is vetoed by the governor and subsequently approved by the legislature, the provisions of
 4 Section 1 of this Act shall become effective on the day following such approval for the
 5 purposes established in this Subsection.

6 (B) For subsequent elections of representatives to the Louisiana Senate and for all
 7 other purposes, the provisions of Section 1 of this Act shall become effective at 10:00 a.m.
 8 on January 10, 2028.

9 (C) The provisions of Section 2 of this Act shall become effective at 10:00 a.m. on
 10 January 10, 2028.

11 (D) The provisions of this Section and Sections 3 and 4 of this Act shall become
 12 effective upon signature of this Act by the governor or, if not signed by the governor, upon
 13 expiration of the time for bills to become law without signature by the governor, as provided
 14 in Article III, Section 18 of the Constitution of Louisiana. If this Act is vetoed by the
 15 governor and subsequently approved by the legislature, the provisions of this Section and
 16 Sections 3 and 4 of this Act shall become effective on the day following such approval.

The original instrument and the following digest, which constitutes no part
 of the legislative instrument, were prepared by Matt DeVille.

DIGEST

SB 468 Original

2024 Regular Session

Connick

Present constitution (Const. Art. III, §6(A)) requires the legislature, by the end of the year following the year in which the state's population is reported to the president of the U.S. for each decennial federal census, to reapportion the representation in each house as equally as practicable on the basis of population shown by the census.

Present law provides boundaries for 39 Senate districts based upon the 2020 federal decennial census.

Proposed law redraws district boundaries for the 39 Senate districts based upon the 2020 federal decennial census.

Proposed law provides that the new districts become effective upon signature of the governor or lapse of time for gubernatorial action for election purposes only for the regular state legislative elections in 2027. Retains present law districts based upon the 2020 census until 10:00 am. on Jan. 10, 2028, at which time present law is repealed and the new districts based upon the 2020 census, as established by proposed law, become effective for all other purposes.

Proposed law specifies that precincts referenced in district descriptions are those precincts

contained in the file named "2024 Precinct Shapefiles (01-10-2024)" available on the legislature's website. The 2024 Precinct Shapefiles are based upon those Voting Districts (VTDs) contained in the 2020 Census Redistricting TIGER/Line Shapefiles for the State of La. as those files have been modified and validated through the data verification program of the La. House of Representatives and the La. Senate to represent precinct changes submitted through Jan. 10, 2024, to the Legislature of La. by parish governing authorities.

Also specifies that if any such precinct has been subdivided by action of the parish governing authority on a nongeographic basis or subdivided by action of the parish governing authority on a geographic basis in accordance with present law, the enumeration of the general precinct designation shall include all nongeographic and all geographic subdivisions thereof. Further provides that the territorial limits of the districts as enacted shall continue in effect until changed by law regardless of any subsequent change made to the precincts by the parish governing authority.

Population data in the summaries accompanying this digest are derived from 2020 Census Redistricting Data (Public Law 94-171), Summary File for La. Population data, statistical information, and maps are supplied for purposes of information and analysis and comprise no part of proposed law.

Proposed law specifies that proposed law does not reduce the term of office of any person holding any position or office on the effective date of proposed law for which the appointment or election is based upon a Senate district as composed pursuant to present law. Specifies that any position or office filled after Jan. 10, 2028, for which the appointment or election is based upon a Senate district shall be appointed or elected based on the district as it is described in proposed law.

Population data in the summaries accompanying this digest are derived from 2020 Census Redistricting Data (Public Law 94-171), Summary File for Louisiana. Population data, statistical information, and maps are supplied for purposes of information and analysis and comprise no part of proposed law.

Effective upon signature of governor or lapse of time for gubernatorial action for election purposes only for the regular state legislative elections in 2027; effective for all other purposes at 10:00 a.m. on Jan. 10, 2028.

(Adds R.S. 24:35; repeals R.S. 24:35.1)

Plan Statistics

Plan: SLS 24RS-1426 (Connick)

<u>Districts:</u>	<u># of Members</u>	<u>Actual Population</u>	<u>Ideal Population</u>	<u>Absolute Deviation</u>	<u>Relative Deviation</u>
District 1	1	115,622	119,429	-3,807	-3.188%
District 2	1	115,780	119,429	-3,649	-3.055%
District 3	1	119,519	119,429	90	0.075%
District 4	1	117,821	119,429	-1,608	-1.346%
District 5	1	123,995	119,429	4,566	3.823%
District 6	1	117,595	119,429	-1,834	-1.536%
District 7	1	124,487	119,429	5,058	4.235%
District 8	1	120,920	119,429	1,491	1.248%
District 9	1	124,537	119,429	5,108	4.277%
District 10	1	123,168	119,429	3,739	3.131%
District 11	1	114,481	119,429	-4,948	-4.143%
District 12	1	114,171	119,429	-5,258	-4.403%
District 13	1	114,815	119,429	-4,614	-3.863%
District 14	1	120,750	119,429	1,321	1.106%
District 15	1	115,848	119,429	-3,581	-2.998%
District 16	1	119,031	119,429	-398	-0.333%
District 17	1	114,040	119,429	-5,389	-4.512%
District 18	1	118,250	119,429	-1,179	-0.987%
District 19	1	123,416	119,429	3,987	3.338%
District 20	1	123,445	119,429	4,016	3.363%
District 21	1	118,105	119,429	-1,324	-1.109%
District 22	1	125,286	119,429	5,857	4.904%
District 23	1	125,014	119,429	5,585	4.676%
District 24	1	124,799	119,429	5,370	4.496%
District 25	1	122,998	119,429	3,569	2.988%
District 26	1	124,178	119,429	4,749	3.976%
District 27	1	117,231	119,429	-2,198	-1.840%
District 28	1	114,358	119,429	-5,071	-4.246%
District 29	1	119,834	119,429	405	0.339%
District 30	1	113,737	119,429	-5,692	-4.766%
District 31	1	120,902	119,429	1,473	1.233%
District 32	1	114,168	119,429	-5,261	-4.405%
District 33	1	116,896	119,429	-2,533	-2.121%
District 34	1	113,538	119,429	-5,891	-4.933%
District 35	1	117,819	119,429	-1,610	-1.348%
District 36	1	124,512	119,429	5,083	4.256%
District 37	1	113,500	119,429	-5,929	-4.964%
District 38	1	124,283	119,429	4,854	4.064%
District 39	1	124,908	119,429	5,479	4.588%

Grand Total:	39	4,657,757	4,657,731
---------------------	-----------	------------------	------------------

Ideal Population Per Member:	119429
Number of Districts for Plan Type:	39
Range of District Populations:	113,500 to 125,286
Absolute Mean Deviation:	302
Absolute Range:	-5,929 to 5,857
Absolute Overall Range:	11,786
Relative Mean Deviation:	3.08%
Relative Range:	-4.96% to 4.90%
Relative Overall Range:	9.86%

<i>Ideal - Actual:</i>	-26
<i>Remainder:</i>	26
<i>Unassigned Population:</i>	0

Total Population

Plan: SLS 24RS-1426 (Connick)

	Total Population	Total White	Total Black	Total Asian	Total American Indian	Total Other	Total Hispanic	VAP Total	VAP White	VAP Black	VAP Asian	VAP American Indian	VAP Other	VAP Hispanic Total
District 1	115,622	74,681	27,472	3,055	2,748	7,666	9,534	88,311	59,647	18,890	2,223	2,082	5,469	6,554
	100.000%	64.591%	23.760%	2.642%	2.377%	6.630%	8.246%	100.000%	67.542%	21.390%	2.517%	2.358%	6.193%	7.421%
District 2	115,780	39,356	69,747	934	981	4,762	5,849	88,341	32,421	51,014	695	717	3,494	4,169
	100.000%	33.992%	60.241%	0.807%	0.847%	4.113%	5.052%	100.000%	36.700%	57.747%	0.787%	0.812%	3.955%	4.719%
District 3	119,519	33,268	71,011	6,233	1,386	7,621	10,199	91,493	27,798	52,400	4,908	1,050	5,337	6,934
	100.000%	27.835%	59.414%	5.215%	1.160%	6.376%	8.533%	100.000%	30.383%	57.272%	5.364%	1.148%	5.833%	7.579%
District 4	117,821	37,787	70,341	2,302	1,012	6,379	8,309	91,406	31,881	52,284	1,798	809	4,634	6,010
	100.000%	32.072%	59.702%	1.954%	0.859%	5.414%	7.052%	100.000%	34.878%	57.200%	1.967%	0.885%	5.070%	6.575%
District 5	123,995	45,512	65,488	3,535	1,389	8,071	10,598	101,848	40,298	51,167	3,054	1,138	6,191	7,946
	100.000%	36.705%	52.815%	2.851%	1.120%	6.509%	8.547%	100.000%	39.567%	50.239%	2.999%	1.117%	6.079%	7.802%
District 6	117,595	76,009	29,569	3,274	1,852	6,891	7,610	89,132	60,278	20,427	2,300	1,441	4,686	5,033
	100.000%	64.636%	25.145%	2.784%	1.575%	5.860%	6.471%	100.000%	67.628%	22.918%	2.580%	1.617%	5.257%	5.647%
District 7	124,487	27,633	76,360	6,087	1,512	12,895	16,247	94,073	23,285	55,937	4,849	1,164	8,838	10,972
	100.000%	22.197%	61.340%	4.890%	1.215%	10.359%	13.051%	100.000%	24.752%	59.461%	5.155%	1.237%	9.395%	11.663%
District 8	120,920	64,488	33,544	7,536	2,928	12,424	16,133	92,630	52,088	23,933	5,741	2,214	8,654	10,979
	100.000%	53.331%	27.741%	6.232%	2.421%	10.275%	13.342%	100.000%	56.232%	25.837%	6.198%	2.390%	9.343%	11.853%
District 9	124,537	85,292	15,907	5,432	1,848	16,058	22,069	102,139	72,698	12,184	4,211	1,381	11,665	16,434
	100.000%	68.487%	12.773%	4.362%	1.484%	12.894%	17.721%	100.000%	71.176%	11.929%	4.123%	1.352%	11.421%	16.090%
District 10	123,168	77,037	16,428	6,562	2,209	20,932	26,020	98,242	64,266	12,008	4,921	1,687	15,360	18,720
	100.000%	62.546%	13.338%	5.328%	1.793%	16.995%	21.126%	100.000%	65.416%	12.223%	5.009%	1.717%	15.635%	19.055%
District 11	114,481	90,824	10,425	2,352	2,308	8,572	9,658	86,848	70,374	7,267	1,609	1,641	5,957	6,609
	100.000%	79.335%	9.106%	2.054%	2.016%	7.488%	8.436%	100.000%	81.031%	8.367%	1.853%	1.890%	6.859%	7.610%
District 12	114,171	79,917	27,330	690	2,026	4,208	5,015	87,984	63,387	19,601	505	1,531	2,960	3,393
	100.000%	69.998%	23.938%	0.604%	1.775%	3.686%	4.393%	100.000%	72.044%	22.278%	0.574%	1.740%	3.364%	3.856%
District 13	114,815	93,664	10,328	1,512	2,580	6,731	7,555	84,153	70,413	6,494	995	1,917	4,334	4,630
	100.000%	81.578%	8.995%	1.317%	2.247%	5.862%	6.580%	100.000%	83.673%	7.717%	1.182%	2.278%	5.150%	5.502%
District 14	120,750	35,861	73,248	4,388	997	6,256	7,947	95,740	31,353	55,530	3,562	793	4,502	5,751
	100.000%	29.699%	60.661%	3.634%	0.826%	5.181%	6.581%	100.000%	32.748%	58.001%	3.720%	0.828%	4.702%	6.007%
District 15	115,848	18,171	87,806	2,763	756	6,352	7,300	86,306	15,544	63,756	2,089	590	4,327	4,952
	100.000%	15.685%	75.794%	2.385%	0.653%	5.483%	6.301%	100.000%	18.010%	73.872%	2.420%	0.684%	5.014%	5.738%
District 16	119,031	78,661	25,515	5,983	1,446	7,426	8,486	97,246	66,783	19,094	4,619	1,167	5,583	6,288
	100.000%	66.084%	21.436%	5.026%	1.215%	6.239%	7.129%	100.000%	68.674%	19.635%	4.750%	1.200%	5.741%	6.466%
District 17	114,040	73,026	36,062	774	1,271	2,907	3,246	88,794	58,456	26,731	545	918	2,144	2,329
	100.000%	64.035%	31.622%	0.679%	1.115%	2.549%	2.846%	100.000%	65.833%	30.105%	0.614%	1.034%	2.415%	2.623%
District 18	118,250	86,641	19,440	2,250	2,004	7,915	9,137	86,314	65,088	13,183	1,462	1,413	5,168	5,840
	100.000%	73.269%	16.440%	1.903%	1.695%	6.693%	7.727%	100.000%	75.408%	15.273%	1.694%	1.637%	5.987%	6.766%

Total Population

Plan: SLS 24RS-1426 (Connick)

	Total Population	Total White	Total Black	Total Asian	Total American Indian	Total Other	Total Hispanic	VAP Total	VAP White	VAP Black	VAP Asian	VAP American Indian	VAP Other	VAP Hispanic Total
District 19	123,416	70,632	37,557	1,727	2,142	11,358	14,057	93,641	56,143	26,868	1,184	1,511	7,935	9,515
	100.000%	57.231%	30.431%	1.399%	1.736%	9.203%	11.390%	100.000%	59.956%	28.693%	1.264%	1.614%	8.474%	10.161%
District 20	123,445	86,454	17,593	1,889	10,251	7,258	8,756	93,154	68,377	11,810	1,345	6,798	4,824	5,616
	100.000%	70.034%	14.252%	1.530%	8.304%	5.880%	7.093%	100.000%	73.402%	12.678%	1.444%	7.298%	5.179%	6.029%
District 21	118,105	72,095	33,350	1,657	3,862	7,141	8,305	90,355	57,855	23,945	1,169	2,650	4,736	5,405
	100.000%	61.043%	28.238%	1.403%	3.270%	6.046%	7.032%	100.000%	64.031%	26.501%	1.294%	2.933%	5.242%	5.982%
District 22	125,286	78,693	35,847	3,539	1,505	5,702	6,764	95,476	62,752	24,963	2,576	1,151	4,034	4,678
	100.000%	62.811%	28.612%	2.825%	1.201%	4.551%	5.399%	100.000%	65.725%	26.146%	2.698%	1.206%	4.225%	4.900%
District 23	125,014	93,234	17,928	4,593	1,868	7,391	8,674	95,449	73,303	12,225	3,367	1,397	5,157	6,043
	100.000%	74.579%	14.341%	3.674%	1.494%	5.912%	6.938%	100.000%	76.798%	12.808%	3.528%	1.464%	5.403%	6.331%
District 24	124,799	49,022	69,170	856	1,038	4,713	5,463	93,295	39,372	49,532	599	727	3,065	3,425
	100.000%	39.281%	55.425%	0.686%	0.832%	3.776%	4.377%	100.000%	42.202%	53.092%	0.642%	0.779%	3.285%	3.671%
District 25	122,998	84,746	28,057	3,207	1,896	5,092	5,962	92,490	65,972	19,256	2,283	1,405	3,574	4,018
	100.000%	68.900%	22.811%	2.607%	1.541%	4.140%	4.847%	100.000%	71.329%	20.820%	2.468%	1.519%	3.864%	4.344%
District 26	124,178	94,363	22,160	1,796	1,359	4,500	5,109	92,668	72,557	14,856	1,271	1,020	2,964	3,274
	100.000%	75.990%	17.845%	1.446%	1.094%	3.624%	4.114%	100.000%	78.298%	16.031%	1.372%	1.101%	3.199%	3.533%
District 27	117,231	73,725	35,407	1,598	1,783	4,718	5,781	88,331	57,243	25,410	1,140	1,287	3,251	3,808
	100.000%	62.889%	30.203%	1.363%	1.521%	4.025%	4.931%	100.000%	64.805%	28.767%	1.291%	1.457%	3.680%	4.311%
District 28	114,358	77,930	28,122	1,794	2,246	4,266	6,010	87,429	61,082	19,839	1,395	1,610	3,503	4,976
	100.000%	68.146%	24.591%	1.569%	1.964%	3.730%	5.255%	100.000%	69.865%	22.692%	1.596%	1.841%	4.007%	5.691%
District 29	119,834	42,246	71,237	1,469	1,714	3,168	3,788	92,422	35,283	52,271	1,179	1,323	2,366	2,766
	100.000%	35.254%	59.446%	1.226%	1.430%	2.644%	3.161%	100.000%	38.176%	56.557%	1.276%	1.431%	2.560%	2.993%
District 30	113,737	88,336	14,830	2,080	3,596	4,895	6,655	85,065	67,127	10,402	1,510	2,629	3,397	4,317
	100.000%	77.667%	13.039%	1.829%	3.162%	4.304%	5.851%	100.000%	78.913%	12.228%	1.775%	3.091%	3.993%	5.075%
District 31	120,902	78,749	30,363	2,391	5,094	4,305	5,357	94,256	63,343	22,064	1,694	3,822	3,333	3,910
	100.000%	65.135%	25.114%	1.978%	4.213%	3.561%	4.431%	100.000%	67.203%	23.409%	1.797%	4.055%	3.536%	4.148%
District 32	114,168	85,306	21,785	1,028	2,300	3,749	4,327	88,475	66,798	15,995	793	1,706	3,183	3,538
	100.000%	74.720%	19.082%	0.900%	2.015%	3.284%	3.790%	100.000%	75.499%	18.079%	0.896%	1.928%	3.598%	3.999%
District 33	116,896	81,933	28,705	970	2,075	3,213	3,757	90,588	65,255	20,844	679	1,582	2,228	2,506
	100.000%	70.091%	24.556%	0.830%	1.775%	2.749%	3.214%	100.000%	72.035%	23.010%	0.750%	1.746%	2.459%	2.766%
District 34	113,538	32,841	76,507	1,113	939	2,138	2,745	85,480	27,611	54,481	911	726	1,751	2,158
	100.000%	28.925%	67.384%	0.980%	0.827%	1.883%	2.418%	100.000%	32.301%	63.735%	1.066%	0.849%	2.048%	2.525%
District 35	117,819	89,063	19,810	2,119	2,712	4,115	5,454	90,846	70,313	14,084	1,554	2,091	2,804	3,889
	100.000%	75.593%	16.814%	1.799%	2.302%	3.493%	4.629%	100.000%	77.398%	15.503%	1.711%	2.302%	3.087%	4.281%
District 36	124,512	79,246	33,283	2,703	2,959	6,321	7,662	93,318	61,462	23,553	1,853	2,248	4,202	4,918
	100.000%	63.645%	26.731%	2.171%	2.376%	5.077%	6.154%	100.000%	65.863%	25.240%	1.986%	2.409%	4.503%	5.270%

Total Population

Plan: SLS 24RS-1426 (Connick)

	Total Population	Total White	Total Black	Total Asian	Total American Indian	Total Other	Total Hispanic	VAP Total	VAP White	VAP Black	VAP Asian	VAP American Indian	VAP Other	VAP Hispanic Total
District 37	113,500	72,880	30,931	1,732	2,109	5,848	7,031	86,420	58,073	21,503	1,239	1,559	4,046	4,707
	100.000%	64.211%	27.252%	1.526%	1.858%	5.152%	6.195%	100.000%	67.199%	24.882%	1.434%	1.804%	4.682%	5.447%
District 38	124,283	73,275	41,765	2,256	2,641	4,346	4,870	95,969	59,366	29,778	1,716	2,038	3,071	3,266
	100.000%	58.958%	33.605%	1.815%	2.125%	3.497%	3.918%	100.000%	61.860%	31.029%	1.788%	2.124%	3.200%	3.403%
District 39	124,908	35,055	82,691	1,109	1,718	4,335	5,110	94,421	29,166	60,190	873	1,307	2,885	3,386
	100.000%	28.065%	66.202%	0.888%	1.375%	3.471%	4.091%	100.000%	30.889%	63.746%	0.925%	1.384%	3.055%	3.586%
Grand Total	4,657,757	2,657,652	1,543,119	107,288	87,060	262,638	322,549	3,570,548	2,124,511	1,115,769	80,416	64,240	185,612	223,662
	100.000%	57.059%	33.130%	2.303%	1.869%	5.639%	6.925%	100.000%	59.501%	31.249%	2.252%	1.799%	5.198%	6.264%

Voter Registration

Plan: SLS 24RS-1426 (Connick)

	Reg Total Dec 2023	Reg White Dec 2023	Reg Black Dec 2023	Reg Other Dec 2023	Reg Dem Total Dec 2023	Reg Rep Total Dec 2023	Reg Other Total Dec 2023
District 1	72,899	51,713	15,640	5,546	21,594	27,817	23,488
	82.548%	70.938%	21.454%	7.608%	29.622%	38.158%	32.220%
District 2	72,698	25,221	45,172	2,305	44,735	12,601	15,362
	82.292%	34.693%	62.137%	3.171%	61.535%	17.333%	21.131%
District 3	74,320	24,184	42,608	7,525	46,774	7,573	19,972
	81.230%	32.540%	57.330%	10.125%	62.936%	10.190%	26.873%
District 4	72,825	26,520	40,984	5,324	45,666	8,458	18,702
	79.672%	36.416%	56.277%	7.311%	62.706%	11.614%	25.681%
District 5	78,432	31,187	40,234	7,011	49,813	6,558	22,061
	77.009%	39.763%	51.298%	8.939%	63.511%	8.361%	28.128%
District 6	75,219	54,326	17,126	3,767	23,489	32,410	19,320
	84.391%	72.224%	22.768%	5.008%	31.227%	43.088%	25.685%
District 7	67,258	16,493	42,215	8,550	40,952	7,984	18,322
	71.496%	24.522%	62.766%	12.712%	60.888%	11.871%	27.241%
District 8	69,682	42,398	18,431	8,853	26,307	21,027	22,348
	75.226%	60.845%	26.450%	12.705%	37.753%	30.176%	32.071%
District 9	72,094	59,015	5,396	7,683	21,610	28,440	22,044
	70.584%	81.858%	7.485%	10.657%	29.975%	39.448%	30.577%
District 10	74,401	55,881	6,819	11,701	19,768	30,952	23,681
	75.732%	75.108%	9.165%	15.727%	26.570%	41.602%	31.829%
District 11	76,901	66,641	5,180	5,080	13,610	40,226	23,065
	88.547%	86.658%	6.736%	6.606%	17.698%	52.309%	29.993%
District 12	69,038	52,575	14,185	2,278	21,508	29,398	18,132
	78.467%	76.154%	20.547%	3.300%	31.154%	42.582%	26.264%
District 13	65,630	58,410	4,592	2,628	11,829	34,630	19,171
	77.989%	88.999%	6.997%	4.004%	18.024%	52.766%	29.211%
District 14	64,127	19,433	40,754	3,940	37,119	9,683	17,325
	66.980%	30.304%	63.552%	6.144%	57.884%	15.100%	27.017%
District 15	66,038	11,301	51,460	3,277	44,296	6,656	15,086
	76.516%	17.113%	77.925%	4.962%	67.077%	10.079%	22.844%
District 16	74,330	56,325	12,192	5,813	22,588	29,997	21,745
	76.435%	75.777%	16.403%	7.821%	30.389%	40.357%	29.255%
District 17	77,494	51,958	23,632	1,904	32,963	26,767	17,764
	87.274%	67.048%	30.495%	2.457%	42.536%	34.541%	22.923%
District 18	74,512	59,418	11,145	3,949	19,695	33,456	21,361
	86.327%	79.743%	14.957%	5.300%	26.432%	44.900%	28.668%
District 19	75,387	47,982	22,335	5,070	29,732	24,942	20,713
	80.506%	63.648%	29.627%	6.725%	39.439%	33.085%	27.476%
District 20	64,437	52,434	7,178	4,825	16,973	29,028	18,436
	69.173%	81.373%	11.140%	7.488%	26.340%	45.049%	28.611%
District 21	67,267	46,283	17,715	3,269	23,669	24,851	18,747
	74.447%	68.805%	26.335%	4.860%	35.187%	36.944%	27.870%
District 22	77,047	54,395	19,195	3,457	25,472	31,142	20,433
	80.698%	70.600%	24.913%	4.487%	33.060%	40.419%	26.520%
District 23	79,095	65,903	8,312	4,880	17,556	38,384	23,155
	82.866%	83.321%	10.509%	6.170%	22.196%	48.529%	29.275%
District 24	75,560	31,506	41,392	2,662	39,177	17,036	19,347
	80.990%	41.697%	54.780%	3.523%	51.849%	22.546%	25.605%
District 25	64,981	50,750	11,609	2,622	20,337	26,591	18,053
	70.257%	78.100%	17.865%	4.035%	31.297%	40.921%	27.782%
District 26	76,716	62,523	11,925	2,268	24,337	32,467	19,912
	82.786%	81.499%	15.544%	2.956%	31.723%	42.321%	25.955%
District 27	62,384	42,934	16,870	2,580	21,701	22,743	17,940
	70.625%	68.822%	27.042%	4.136%	34.786%	36.456%	28.757%
District 28	64,829	47,947	14,695	2,187	24,935	24,867	15,027
	74.150%	73.959%	22.667%	3.373%	38.463%	38.358%	23.179%
District 29	62,023	23,694	36,075	2,254	32,910	13,230	15,883
	67.108%	38.202%	58.164%	3.634%	53.061%	21.331%	25.608%
District 30	60,649	51,086	6,096	3,467	14,309	28,536	17,804
	71.297%	84.232%	10.051%	5.716%	23.593%	47.051%	29.356%
District 31	73,203	51,726	17,363	4,114	24,020	31,232	17,951
	77.664%	70.661%	23.719%	5.620%	32.813%	42.665%	24.522%
District 32	68,559	55,239	11,947	1,373	19,799	32,683	16,078
	77.490%	80.571%	17.426%	2.003%	28.879%	47.671%	23.451%
District 33	76,168	56,961	17,142	2,065	21,800	36,106	18,262
	84.082%	74.783%	22.506%	2.711%	28.621%	47.403%	23.976%
District 34	69,514	20,793	47,142	1,579	40,787	13,150	15,576
	81.322%	29.912%	67.817%	2.271%	58.675%	18.917%	22.407%
District 35	67,579	56,992	8,128	2,459	14,759	34,493	18,327
	74.389%	84.334%	12.027%	3.639%	21.840%	51.041%	27.119%

Voter Registration

Plan: SLS 24RS-1426 (Connick)

	Reg Total Dec 2023	Reg White Dec 2023	Reg Black Dec 2023	Reg Other Dec 2023	Reg Dem Total Dec 2023	Reg Rep Total Dec 2023	Reg Other Total Dec 2023
District 36	66,017	47,994	14,957	3,066	17,575	31,160	17,282
	70.744%	72.699%	22.656%	4.644%	26.622%	47.200%	26.178%
District 37	55,102	42,617	9,947	2,538	15,238	24,368	15,496
	63.761%	77.342%	18.052%	4.606%	27.654%	44.223%	28.122%
District 38	72,633	48,288	20,804	3,541	25,114	28,870	18,649
	75.684%	66.482%	28.643%	4.875%	34.577%	39.748%	25.676%
District 39	65,239	19,400	43,237	2,602	37,990	11,114	16,135
	69.094%	29.737%	66.275%	3.988%	58.232%	17.036%	24.732%
Grand Total	2,742,287	1,740,446	841,829	160,012	1,052,506	951,626	738,155

Splits

Plan: SLS 24RS-1426 (Connick)

	Total Population	Total White	Total Black	Total Asian	Total American Indian	Total Other	VAP Total	VAP White	VAP Black	VAP Asian	VAP American Indian	VAP Other	Reg Total Dec 2023	Reg White Dec 2023	Reg Black Dec 2023	Reg Other Dec 2023
District 1																
*Orleans	1,028	715	99	75	17	122	851	632	79	47	13	80	513	424	40	49
*St. Bernard	10,276	7,152	1,553	273	261	1,037	7,545	5,387	1,025	191	203	739	6,901	5,518	912	471
*St. Tammany	104,318	66,814	25,820	2,707	2,470	6,507	79,915	53,628	17,786	1,985	1,866	4,650	65,485	45,771	14,688	5,026
District 1	115,622	74,681	27,472	3,055	2,748	7,666	88,311	59,647	18,890	2,223	2,082	5,469	72,899	51,713	15,640	5,546
	100.000%	64.591%	23.760%	2.642%	2.377%	6.630%	100.000%	67.542%	21.390%	2.517%	2.358%	6.193%	82.548%	70.938%	21.454%	7.608%
District 2																
*Ascension	21,767	5,945	14,256	144	190	1,232	16,053	4,927	10,057	106	124	839	12,992	3,875	8,600	517
*Assumption	11,014	4,985	5,613	45	92	279	8,597	3,989	4,306	21	75	206	7,392	3,407	3,878	107
*Iberville	16,426	5,708	9,645	133	102	838	12,995	4,922	7,163	100	78	732	9,996	3,101	6,658	237
*Lafourche	15,385	7,811	6,708	130	222	514	11,677	6,377	4,678	92	158	372	8,145	4,823	3,067	255
*St. James	14,746	5,956	8,465	45	52	228	11,502	4,953	6,317	28	40	164	10,830	4,309	6,360	161
*St. John the Baptist	23,609	4,300	17,677	240	200	1,192	17,908	3,601	13,112	198	152	845	15,679	2,792	12,043	844
*West Baton Rouge	12,833	4,651	7,383	197	123	479	9,609	3,652	5,381	150	90	336	7,664	2,914	4,566	184
District 2	115,780	39,356	69,747	934	981	4,762	88,341	32,421	51,014	695	717	3,494	72,698	25,221	45,172	2,305
	100.000%	33.992%	60.241%	0.807%	0.847%	4.113%	100.000%	36.700%	57.747%	0.787%	0.812%	3.955%	82.292%	34.693%	62.137%	3.171%
District 3																
*Orleans	86,031	15,923	60,255	5,125	700	4,028	67,263	14,193	45,481	4,117	565	2,907	55,536	11,658	37,927	5,948
*St. Bernard	33,488	17,345	10,756	1,108	686	3,593	24,230	13,605	6,919	791	485	2,430	18,784	12,526	4,681	1,577
District 3	119,519	33,268	71,011	6,233	1,386	7,621	91,493	27,798	52,400	4,908	1,050	5,337	74,320	24,184	42,608	7,525
	100.000%	27.835%	59.414%	5.215%	1.160%	6.376%	100.000%	30.383%	57.272%	5.364%	1.148%	5.833%	81.230%	32.540%	57.330%	10.125%
District 4																
*Orleans	117,821	37,787	70,341	2,302	1,012	6,379	91,406	31,881	52,284	1,798	809	4,634	72,825	26,520	40,984	5,324
District 4	117,821	37,787	70,341	2,302	1,012	6,379	91,406	31,881	52,284	1,798	809	4,634	72,825	26,520	40,984	5,324
	100.000%	32.072%	59.702%	1.954%	0.859%	5.414%	100.000%	34.878%	57.200%	1.967%	0.885%	5.070%	79.672%	36.416%	56.277%	7.311%
District 5																
*Jefferson	18,230	2,056	14,552	535	123	964	13,544	1,716	10,625	439	93	671	11,230	1,223	9,228	779
*Orleans	105,765	43,456	50,936	3,000	1,266	7,107	88,304	38,582	40,542	2,615	1,045	5,520	67,202	29,964	31,006	6,232
District 5	123,995	45,512	65,488	3,535	1,389	8,071	101,848	40,298	51,167	3,054	1,138	6,191	78,432	31,187	40,234	7,011
	100.000%	36.705%	52.815%	2.851%	1.120%	6.509%	100.000%	39.567%	50.239%	2.999%	1.117%	6.079%	77.009%	39.763%	51.298%	8.939%
District 6																
*East Baton Rouge	92,097	58,946	22,684	3,152	1,440	5,875	69,821	46,907	15,548	2,231	1,133	4,002	58,303	42,581	12,383	3,339
*Livingston	16,116	13,248	1,597	89	308	874	12,084	10,177	1,074	44	223	566	9,836	8,734	802	300
*St. Helena	9,382	3,815	5,288	33	104	142	7,227	3,194	3,805	25	85	118	7,080	3,011	3,941	128
District 6	117,595	76,009	29,569	3,274	1,852	6,891	89,132	60,278	20,427	2,300	1,441	4,686	75,219	54,326	17,126	3,767
	100.000%	64.636%	25.145%	2.784%	1.575%	5.860%	100.000%	67.628%	22.918%	2.580%	1.617%	5.257%	84.391%	72.224%	22.768%	5.008%

Splits

Plan: SLS 24RS-1426 (Connick)

	Total Population	Total White	Total Black	Total Asian	Total American Indian	Total Other	VAP Total	VAP White	VAP Black	VAP Asian	VAP American Indian	VAP Other	Reg Total Dec 2023	Reg White Dec 2023	Reg Black Dec 2023	Reg Other Dec 2023
District 7																
*Jefferson	69,861	15,812	38,867	4,560	968	9,654	52,381	13,063	28,464	3,598	736	6,520	34,781	8,652	20,571	5,558
*Orleans	50,600	10,806	34,871	1,448	418	3,057	38,482	9,365	25,433	1,194	318	2,172	30,029	7,213	20,039	2,777
*Plaquemines	4,026	1,015	2,622	79	126	184	3,210	857	2,040	57	110	146	2,448	628	1,605	215
District 7	124,487	27,633	76,360	6,087	1,512	12,895	94,073	23,285	55,937	4,849	1,164	8,838	67,258	16,493	42,215	8,550
	100.000%	22.197%	61.340%	4.890%	1.215%	10.359%	100.000%	24.752%	59.461%	5.155%	1.237%	9.395%	71.496%	24.522%	62.766%	12.712%
District 8																
*Jefferson	101,431	51,216	30,738	6,298	2,357	10,822	78,506	42,089	22,116	4,873	1,824	7,604	58,987	34,030	17,102	7,855
*Plaquemines	19,489	13,272	2,806	1,238	571	1,602	14,124	9,999	1,817	868	390	1,050	10,695	8,368	1,329	998
District 8	120,920	64,488	33,544	7,536	2,928	12,424	92,630	52,088	23,933	5,741	2,214	8,654	69,682	42,398	18,431	8,853
	100.000%	53.331%	27.741%	6.232%	2.421%	10.275%	100.000%	56.232%	25.837%	6.198%	2.390%	9.343%	75.226%	60.845%	26.450%	12.705%
District 9																
*Jefferson	101,785	67,517	13,440	4,526	1,595	14,707	82,249	57,099	9,935	3,462	1,183	10,570	59,809	48,669	4,802	6,338
*Orleans	22,752	17,775	2,467	906	253	1,351	19,890	15,599	2,249	749	198	1,095	12,285	10,346	594	1,345
District 9	124,537	85,292	15,907	5,432	1,848	16,058	102,139	72,698	12,184	4,211	1,381	11,665	72,094	59,015	5,396	7,683
	100.000%	68.487%	12.773%	4.362%	1.484%	12.894%	100.000%	71.176%	11.929%	4.123%	1.352%	11.421%	70.584%	81.858%	7.485%	10.657%
District 10																
*Jefferson	123,168	77,037	16,428	6,562	2,209	20,932	98,242	64,266	12,008	4,921	1,687	15,360	74,401	55,881	6,819	11,701
District 10	123,168	77,037	16,428	6,562	2,209	20,932	98,242	64,266	12,008	4,921	1,687	15,360	74,401	55,881	6,819	11,701
	100.000%	62.546%	13.338%	5.328%	1.793%	16.995%	100.000%	65.416%	12.223%	5.009%	1.717%	15.635%	75.732%	75.108%	9.165%	15.727%
District 11																
*St. Tammany	114,481	90,824	10,425	2,352	2,308	8,572	86,848	70,374	7,267	1,609	1,641	5,957	76,901	66,641	5,180	5,080
District 11	114,481	90,824	10,425	2,352	2,308	8,572	86,848	70,374	7,267	1,609	1,641	5,957	76,901	66,641	5,180	5,080
	100.000%	79.335%	9.106%	2.054%	2.016%	7.488%	100.000%	81.031%	8.367%	1.853%	1.890%	6.859%	88.547%	86.658%	6.736%	6.606%
District 12																
*St. Tammany	31,046	26,517	1,788	249	653	1,839	24,386	21,115	1,275	174	487	1,335	22,405	20,289	1,015	1,101
*Tangipahoa	37,662	23,457	12,108	225	637	1,235	28,647	18,529	8,594	177	483	864	19,482	13,683	5,278	521
Washington	45,463	29,943	13,434	216	736	1,134	34,951	23,743	9,732	154	561	761	27,151	18,603	7,892	656
District 12	114,171	79,917	27,330	690	2,026	4,208	87,984	63,387	19,601	505	1,531	2,960	69,038	52,575	14,185	2,278
	100.000%	69.998%	23.938%	0.604%	1.775%	3.686%	100.000%	72.044%	22.278%	0.574%	1.740%	3.364%	78.467%	76.154%	20.547%	3.300%
District 13																
*Livingston	114,815	93,664	10,328	1,512	2,580	6,731	84,153	70,413	6,494	995	1,917	4,334	65,630	58,410	4,592	2,628
District 13	114,815	93,664	10,328	1,512	2,580	6,731	84,153	70,413	6,494	995	1,917	4,334	65,630	58,410	4,592	2,628
	100.000%	81.578%	8.995%	1.317%	2.247%	5.862%	100.000%	83.673%	7.717%	1.182%	2.278%	5.150%	77.989%	88.999%	6.997%	4.004%
District 14																
*East Baton Rouge	120,750	35,861	73,248	4,388	997	6,256	95,740	31,353	55,530	3,562	793	4,502	64,127	19,433	40,754	3,940

Splits

Plan: SLS 24RS-1426 (Connick)

	Total Population	Total White	Total Black	Total Asian	Total American Indian	Total Other	VAP Total	VAP White	VAP Black	VAP Asian	VAP American Indian	VAP Other	Reg Total Dec 2023	Reg White Dec 2023	Reg Black Dec 2023	Reg Other Dec 2023
*Lafourche	46,474	37,177	2,484	565	3,275	2,973	35,106	29,138	1,485	402	2,157	1,924	25,120	22,699	846	1,575
*Terrebonne	76,971	49,277	15,109	1,324	6,976	4,285	58,048	39,239	10,325	943	4,641	2,900	39,317	29,735	6,332	3,250
District 20	123,445	86,454	17,593	1,889	10,251	7,258	93,154	68,377	11,810	1,345	6,798	4,824	64,437	52,434	7,178	4,825
	100.000%	70.034%	14.252%	1.530%	8.304%	5.880%	100.000%	73.402%	12.678%	1.444%	7.298%	5.179%	69.173%	81.373%	11.140%	7.488%
District 21																
*Assumption	10,025	8,737	607	51	166	464	8,019	7,156	401	36	122	304	5,931	5,570	253	108
*Iberia	14,692	7,953	5,956	199	122	462	11,141	6,365	4,254	126	88	308	9,550	5,557	3,724	269
*Lafourche	10,005	6,514	2,745	146	209	391	8,063	5,257	2,288	113	128	277	5,198	4,415	589	194
*St. Martin	1,368	1,285	13	7	34	29	1,154	1,091	11	5	30	17	891	876	1	14
St. Mary	49,406	26,949	15,991	835	1,670	3,961	37,521	21,594	11,520	593	1,173	2,641	29,204	17,999	9,570	1,635
*Terrebonne	32,609	20,657	8,038	419	1,661	1,834	24,457	16,392	5,471	296	1,109	1,189	16,493	11,866	3,578	1,049
District 21	118,105	72,095	33,350	1,657	3,862	7,141	90,355	57,855	23,945	1,169	2,650	4,736	67,267	46,283	17,715	3,269
	100.000%	61.043%	28.238%	1.403%	3.270%	6.046%	100.000%	64.031%	26.501%	1.294%	2.933%	5.242%	74.447%	68.805%	26.335%	4.860%
District 22																
*Iberia	55,237	31,253	18,600	1,924	672	2,788	41,650	24,930	12,815	1,436	493	1,976	32,638	21,291	9,717	1,630
*Lafayette	31,167	21,941	5,936	1,086	448	1,756	24,203	17,693	4,134	771	359	1,246	18,755	15,130	2,442	1,183
*St. Martin	38,882	25,499	11,311	529	385	1,158	29,623	20,129	8,014	369	299	812	25,654	17,974	7,036	644
District 22	125,286	78,693	35,847	3,539	1,505	5,702	95,476	62,752	24,963	2,576	1,151	4,034	77,047	54,395	19,195	3,457
	100.000%	62.811%	28.612%	2.825%	1.201%	4.551%	100.000%	65.725%	26.146%	2.698%	1.206%	4.225%	80.698%	70.600%	24.913%	4.487%
District 23																
*Lafayette	125,014	93,234	17,928	4,593	1,868	7,391	95,449	73,303	12,225	3,367	1,397	5,157	79,095	65,903	8,312	4,880
District 23	125,014	93,234	17,928	4,593	1,868	7,391	95,449	73,303	12,225	3,367	1,397	5,157	79,095	65,903	8,312	4,880
	100.000%	74.579%	14.341%	3.674%	1.494%	5.912%	100.000%	76.798%	12.808%	3.528%	1.464%	5.403%	82.866%	83.321%	10.509%	6.170%
District 24																
*Lafayette	69,807	27,066	38,246	626	641	3,228	52,663	22,173	27,520	443	440	2,087	41,495	17,319	22,351	1,825
*St. Landry	47,481	18,568	27,097	194	332	1,290	35,052	14,533	19,289	139	245	846	29,326	11,871	16,705	750
*St. Martin	7,511	3,388	3,827	36	65	195	5,580	2,666	2,723	17	42	132	4,739	2,316	2,336	87
District 24	124,799	49,022	69,170	856	1,038	4,713	93,295	39,372	49,532	599	727	3,065	75,560	31,506	41,392	2,662
	100.000%	39.281%	55.425%	0.686%	0.832%	3.776%	100.000%	42.202%	53.092%	0.642%	0.779%	3.285%	80.990%	41.697%	54.780%	3.523%
District 25																
*Acadia	4,865	4,539	176	12	61	77	3,610	3,404	105	10	43	48	3,234	3,133	56	45
*Calcasieu	80,266	49,909	21,919	2,982	1,288	4,168	60,483	39,347	15,066	2,139	990	2,941	38,942	28,172	8,708	2,062
Cameron	5,617	5,232	125	30	75	155	4,358	4,100	79	23	47	109	4,072	3,936	61	75
Jefferson Davis	32,250	25,066	5,837	183	472	692	24,039	19,121	4,006	111	325	476	18,733	15,509	2,784	440
District 25	122,998	84,746	28,057	3,207	1,896	5,092	92,490	65,972	19,256	2,283	1,405	3,574	64,981	50,750	11,609	2,622
	100.000%	68.900%	22.811%	2.607%	1.541%	4.140%	100.000%	71.329%	20.820%	2.468%	1.519%	3.864%	70.257%	78.100%	17.865%	4.035%
District 26																

Splits

Plan: SLS 24RS-1426 (Connick)

	Total Population	Total White	Total Black	Total Asian	Total American Indian	Total Other	VAP Total	VAP White	VAP Black	VAP Asian	VAP American Indian	VAP Other	Reg Total Dec 2023	Reg White Dec 2023	Reg Black Dec 2023	Reg Other Dec 2023
District 26																
*Acadia	52,711	39,941	10,688	226	512	1,344	39,333	30,667	7,278	163	357	868	32,917	26,305	5,939	673
*Lafayette	14,108	9,945	2,662	123	224	1,154	10,323	7,527	1,791	71	175	759	8,288	6,525	1,431	332
Vermilion	57,359	44,477	8,810	1,447	623	2,002	43,012	34,363	5,787	1,037	488	1,337	35,511	29,693	4,555	1,263
District 26	124,178	94,363	22,160	1,796	1,359	4,500	92,668	72,557	14,856	1,271	1,020	2,964	76,716	62,523	11,925	2,268
	100.000%	75.990%	17.845%	1.446%	1.094%	3.624%	100.000%	78.298%	16.031%	1.372%	1.101%	3.199%	82.786%	81.499%	15.544%	2.956%
District 27																
*Calcasieu	117,231	73,725	35,407	1,598	1,783	4,718	88,331	57,243	25,410	1,140	1,287	3,251	62,384	42,934	16,870	2,580
District 27	117,231	73,725	35,407	1,598	1,783	4,718	88,331	57,243	25,410	1,140	1,287	3,251	62,384	42,934	16,870	2,580
	100.000%	62.889%	30.203%	1.363%	1.521%	4.025%	100.000%	64.805%	28.767%	1.291%	1.457%	3.680%	70.625%	68.822%	27.042%	4.136%
District 28																
Allen	22,750	16,327	4,490	246	947	740	17,510	12,751	3,275	182	646	656	11,079	8,704	1,920	455
*Avoyelles	33,033	21,348	9,525	405	636	1,119	25,390	16,844	6,716	362	466	1,002	17,740	12,734	4,518	488
Evangeline	32,350	21,354	9,235	241	280	1,240	24,408	16,460	6,483	187	217	1,061	20,388	14,274	5,744	370
*Rapides	18,506	13,343	3,033	802	323	1,005	14,223	10,615	2,117	595	233	663	10,874	8,694	1,438	742
*St. Landry	7,719	5,558	1,839	100	60	162	5,898	4,412	1,248	69	48	121	4,748	3,541	1,075	132
District 28	114,358	77,930	28,122	1,794	2,246	4,266	87,429	61,082	19,839	1,395	1,610	3,503	64,829	47,947	14,695	2,187
	100.000%	68.146%	24.591%	1.569%	1.964%	3.730%	100.000%	69.865%	22.692%	1.596%	1.841%	4.007%	74.150%	73.959%	22.667%	3.373%
District 29																
*Avoyelles	2,724	635	1,970	10	72	37	2,095	535	1,475	3	55	27	1,472	376	1,049	47
*Bienville	2,972	1,433	1,440	15	38	46	2,389	1,192	1,128	9	32	28	1,952	965	967	20
*Grant	5,246	3,309	1,739	21	103	74	4,079	2,657	1,282	14	81	45	3,309	2,173	1,058	78
*Jackson	5,429	2,569	2,388	115	62	295	4,265	2,083	1,780	106	39	257	2,865	1,381	1,425	59
*Lincoln	25,043	7,929	15,874	413	273	554	20,385	6,917	12,494	368	229	377	10,154	3,040	6,682	432
*Natchitoches	14,063	2,981	10,433	52	166	431	10,509	2,600	7,393	48	127	341	6,764	1,481	5,039	244
*Rapides	57,601	19,776	34,549	815	857	1,604	43,630	16,424	24,729	617	652	1,208	31,100	11,794	18,014	1,292
*Winn	6,756	3,614	2,844	28	143	127	5,070	2,875	1,990	14	108	83	4,407	2,484	1,841	82
District 29	119,834	42,246	71,237	1,469	1,714	3,168	92,422	35,283	52,271	1,179	1,323	2,366	62,023	23,694	36,075	2,254
	100.000%	35.254%	59.446%	1.226%	1.430%	2.644%	100.000%	38.176%	56.557%	1.276%	1.431%	2.560%	67.108%	38.202%	58.164%	3.634%
District 30																
Beauregard	36,549	29,529	4,649	402	1,052	917	27,489	22,304	3,495	269	773	648	22,071	18,639	2,264	1,168
*Calcasieu	19,288	16,138	2,060	122	465	503	14,352	12,199	1,422	80	327	324	10,493	9,258	915	320
*Rapides	9,150	7,582	510	114	479	465	6,963	5,859	352	87	369	296	5,676	5,060	309	307
Vernon	48,750	35,087	7,611	1,442	1,600	3,010	36,261	26,765	5,133	1,074	1,160	2,129	22,409	18,129	2,608	1,672
District 30	113,737	88,336	14,830	2,080	3,596	4,895	85,065	67,127	10,402	1,510	2,629	3,397	60,649	51,086	6,096	3,467
	100.000%	77.667%	13.039%	1.829%	3.162%	4.304%	100.000%	78.913%	12.228%	1.775%	3.091%	3.993%	71.297%	84.232%	10.051%	5.716%
District 31																

Splits

Plan: SLS 24RS-1426 (Connick)

	Total Population	Total White	Total Black	Total Asian	Total American Indian	Total Other	VAP Total	VAP White	VAP Black	VAP Asian	VAP American Indian	VAP Other	Reg Total Dec 2023	Reg White Dec 2023	Reg Black Dec 2023	Reg Other Dec 2023
District 31																
*Bienville	7,745	5,149	2,306	38	161	91	5,907	3,969	1,730	19	123	66	4,854	3,309	1,480	65
*Bossier	18,624	12,776	3,543	709	553	1,043	14,080	10,038	2,413	507	416	706	10,505	7,840	1,816	849
*Caddo	15,428	11,082	2,657	956	279	454	12,201	9,071	1,931	655	228	316	9,324	7,430	1,197	697
*De Soto	9,827	3,014	6,440	47	147	179	7,573	2,516	4,763	39	114	141	6,006	1,953	3,902	151
*Natchitoches	23,452	16,380	5,292	203	695	882	18,840	13,410	4,022	150	556	702	13,911	10,280	2,977	654
*Rapides	6,458	5,185	779	144	187	163	5,090	4,186	533	99	141	131	4,223	3,604	466	153
Red River	7,620	4,195	3,106	25	171	123	5,714	3,338	2,164	3	116	93	5,475	3,034	2,358	83
Sabine	22,155	15,036	3,861	94	2,723	441	17,064	12,054	2,655	66	1,970	319	13,570	10,287	1,912	1,371
*Webster	4,785	2,992	1,540	17	111	125	3,696	2,338	1,178	14	96	70	2,876	1,929	893	54
*Winn	4,808	2,940	839	158	67	804	4,091	2,423	675	142	62	789	2,459	2,060	362	37
District 31	120,902	78,749	30,363	2,391	5,094	4,305	94,256	63,343	22,064	1,694	3,822	3,333	73,203	51,726	17,363	4,114
	100.000%	65.135%	25.114%	1.978%	4.213%	3.561%	100.000%	67.203%	23.409%	1.797%	4.055%	3.536%	77.664%	70.661%	23.719%	5.620%
District 32																
*Avoyelles	3,936	3,642	183	19	59	33	3,093	2,890	120	14	49	20	2,226	2,132	55	39
Caldwell	9,645	7,646	1,632	51	150	166	7,478	5,969	1,224	46	116	123	5,813	4,959	762	92
Catahoula	8,906	5,776	2,395	46	119	570	6,951	4,557	1,736	33	87	538	6,113	4,363	1,695	55
*Concordia	12,015	8,296	3,166	104	181	268	9,221	6,398	2,430	86	121	186	7,276	5,296	1,845	135
Franklin	19,774	12,492	6,802	70	205	205	15,028	9,901	4,779	44	153	151	12,350	8,524	3,718	108
La Salle	14,791	11,348	1,422	283	372	1,366	11,563	8,636	1,065	264	271	1,327	8,380	7,633	583	164
*Ouachita	4,568	4,189	54	20	169	136	3,505	3,215	35	15	137	103	3,108	3,017	21	70
*Rapides	25,109	20,968	2,300	355	821	665	18,791	15,909	1,601	239	597	445	16,022	14,278	1,178	566
*Richland	2,080	1,509	514	7	28	22	1,535	1,141	348	7	26	13	1,377	1,058	291	28
*West Feliciana	13,344	9,440	3,317	73	196	318	11,310	8,182	2,657	45	149	277	5,894	3,979	1,799	116
District 32	114,168	85,306	21,785	1,028	2,300	3,749	88,475	66,798	15,995	793	1,706	3,183	68,559	55,239	11,947	1,373
	100.000%	74.720%	19.082%	0.900%	2.015%	3.284%	100.000%	75.499%	18.079%	0.896%	1.928%	3.598%	77.490%	80.571%	17.426%	2.003%
District 33																
*Bienville	2,264	368	1,854	4	8	30	1,777	325	1,426	2	7	17	1,530	235	1,281	14
Claiborne	14,170	7,263	6,360	88	185	274	11,507	6,258	4,824	55	140	230	8,390	4,557	3,677	156
*Lincoln	7,542	6,162	957	48	141	234	5,875	4,839	727	39	112	158	5,047	4,327	613	107
*Morehouse	9,429	7,316	1,708	61	205	139	7,589	5,953	1,333	39	148	116	6,299	5,038	1,147	114
*Ouachita	44,627	33,382	8,589	626	886	1,144	33,458	25,764	5,781	446	682	785	29,015	23,338	4,633	1,044
Union	21,107	14,460	5,224	62	338	1,023	16,632	11,807	3,861	39	254	671	14,802	10,847	3,497	458
*Webster	8,006	5,088	2,588	54	132	144	6,218	4,086	1,882	39	103	108	4,214	2,849	1,281	84
West Carroll	9,751	7,894	1,425	27	180	225	7,532	6,223	1,010	20	136	143	6,871	5,770	1,013	88
District 33	116,896	81,933	28,705	970	2,075	3,213	90,588	65,255	20,844	679	1,582	2,228	76,168	56,961	17,142	2,065
	100.000%	70.091%	24.556%	0.830%	1.775%	2.749%	100.000%	72.035%	23.010%	0.750%	1.746%	2.459%	84.082%	74.783%	22.506%	2.711%

Splits

Plan: SLS 24RS-1426 (Connick)

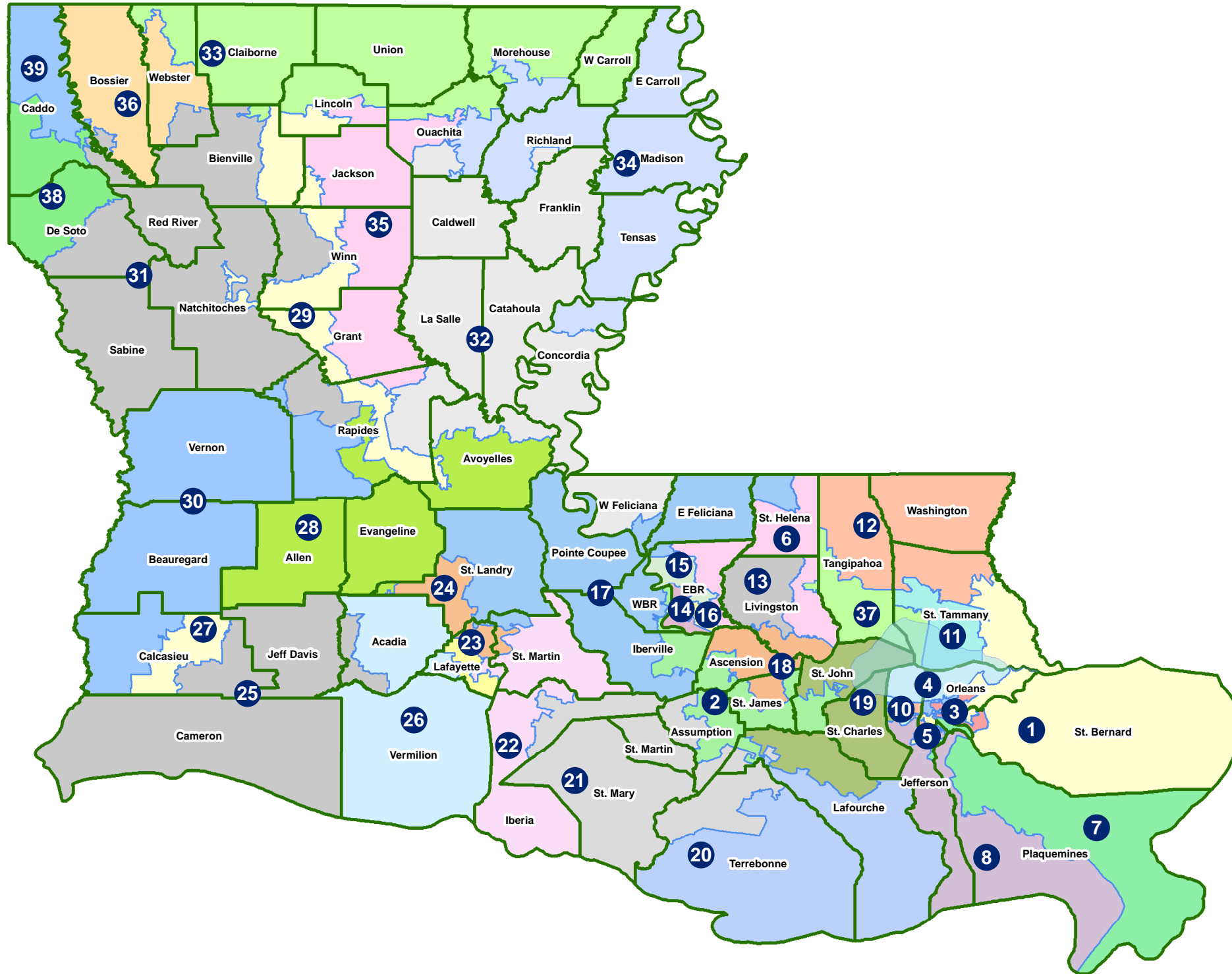
	Total Population	Total White	Total Black	Total Asian	Total American Indian	Total Other	VAP Total	VAP White	VAP Black	VAP Asian	VAP American Indian	VAP Other	Reg Total Dec 2023	Reg White Dec 2023	Reg Black Dec 2023	Reg Other Dec 2023
District 34																
*Concordia	6,672	1,979	4,559	18	52	64	4,996	1,710	3,183	14	46	43	4,143	1,520	2,573	50
East Carroll	7,459	2,054	5,272	29	43	61	5,901	1,773	4,043	19	27	39	4,564	1,218	3,305	41
Madison	10,017	3,475	6,363	20	59	100	7,435	2,906	4,391	9	48	81	7,068	2,439	4,518	111
*Morehouse	16,200	4,965	10,776	99	165	195	12,473	4,142	7,967	78	131	155	9,141	2,768	6,230	143
*Ouachita	51,080	8,348	40,136	848	364	1,384	37,592	7,437	27,971	720	274	1,190	29,349	4,252	24,117	980
*Richland	17,963	10,276	7,089	76	230	292	13,848	8,197	5,198	59	177	217	11,764	7,086	4,462	216
Tensas	4,147	1,744	2,312	23	26	42	3,235	1,446	1,728	12	23	26	3,485	1,510	1,937	38
District 34	113,538	32,841	76,507	1,113	939	2,138	85,480	27,611	54,481	911	726	1,751	69,514	20,793	47,142	1,579
	100.000%	28.925%	67.384%	0.980%	0.827%	1.883%	100.000%	32.301%	63.735%	1.066%	0.849%	2.048%	81.322%	29.912%	67.817%	2.271%
District 35																
*Grant	16,923	14,400	1,596	112	541	274	13,448	11,307	1,435	83	426	197	8,917	8,591	62	264
*Jackson	9,602	7,398	1,778	60	193	173	7,518	5,884	1,345	34	135	120	6,510	5,189	1,185	136
*Lincoln	15,811	11,943	2,533	431	248	656	12,395	9,550	1,898	337	185	425	9,207	7,772	1,062	373
*Ouachita	60,093	42,626	12,438	1,294	1,242	2,493	45,645	33,558	8,503	937	966	1,681	34,158	27,542	5,250	1,366
*Rapides	13,199	10,656	1,421	198	435	489	10,095	8,380	873	149	342	351	7,391	6,526	554	311
*Winn	2,191	2,040	44	24	53	30	1,745	1,634	30	14	37	30	1,396	1,372	15	9
District 35	117,819	89,063	19,810	2,119	2,712	4,115	90,846	70,313	14,084	1,554	2,091	2,804	67,579	56,992	8,128	2,459
	100.000%	75.593%	16.814%	1.799%	2.302%	3.493%	100.000%	77.398%	15.503%	1.711%	2.302%	3.087%	74.389%	84.334%	12.027%	3.639%
District 36																
*Bossier	100,336	64,591	24,732	2,566	2,515	5,932	74,479	49,742	17,149	1,752	1,889	3,947	51,848	38,704	10,387	2,757
*Webster	24,176	14,655	8,551	137	444	389	18,839	11,720	6,404	101	359	255	14,169	9,290	4,570	309
District 36	124,512	79,246	33,283	2,703	2,959	6,321	93,318	61,462	23,553	1,853	2,248	4,202	66,017	47,994	14,957	3,066
	100.000%	63.645%	26.731%	2.171%	2.376%	5.077%	100.000%	65.863%	25.240%	1.986%	2.409%	4.503%	70.744%	72.699%	22.656%	4.644%
District 37																
*Livingston	3,280	2,515	550	17	63	135	2,497	1,893	447	9	48	100	1,782	1,567	167	48
*St. Tammany	14,725	12,486	610	466	229	934	11,079	9,504	433	307	167	668	9,516	8,561	246	709
*Tangipahoa	95,495	57,879	29,771	1,249	1,817	4,779	72,844	46,676	20,623	923	1,344	3,278	43,804	32,489	9,534	1,781
District 37	113,500	72,880	30,931	1,732	2,109	5,848	86,420	58,073	21,503	1,239	1,559	4,046	55,102	42,617	9,947	2,538
	100.000%	64.211%	27.252%	1.526%	1.858%	5.152%	100.000%	67.199%	24.882%	1.434%	1.804%	4.682%	63.761%	77.342%	18.052%	4.606%
District 38																
*Caddo	107,298	61,005	38,232	2,186	2,048	3,827	83,102	49,973	27,116	1,669	1,595	2,749	60,752	39,236	18,389	3,127
*De Soto	16,985	12,270	3,533	70	593	519	12,867	9,393	2,662	47	443	322	11,881	9,052	2,415	414
District 38	124,283	73,275	41,765	2,256	2,641	4,346	95,969	59,366	29,778	1,716	2,038	3,071	72,633	48,288	20,804	3,541
	100.000%	58.958%	33.605%	1.815%	2.125%	3.497%	100.000%	61.860%	31.029%	1.788%	2.124%	3.200%	75.684%	66.482%	28.643%	4.875%
District 39																
*Bossier	9,786	3,685	4,276	217	205	1,403	7,317	3,151	2,878	189	172	927	3,373	1,685	1,352	336

Splits

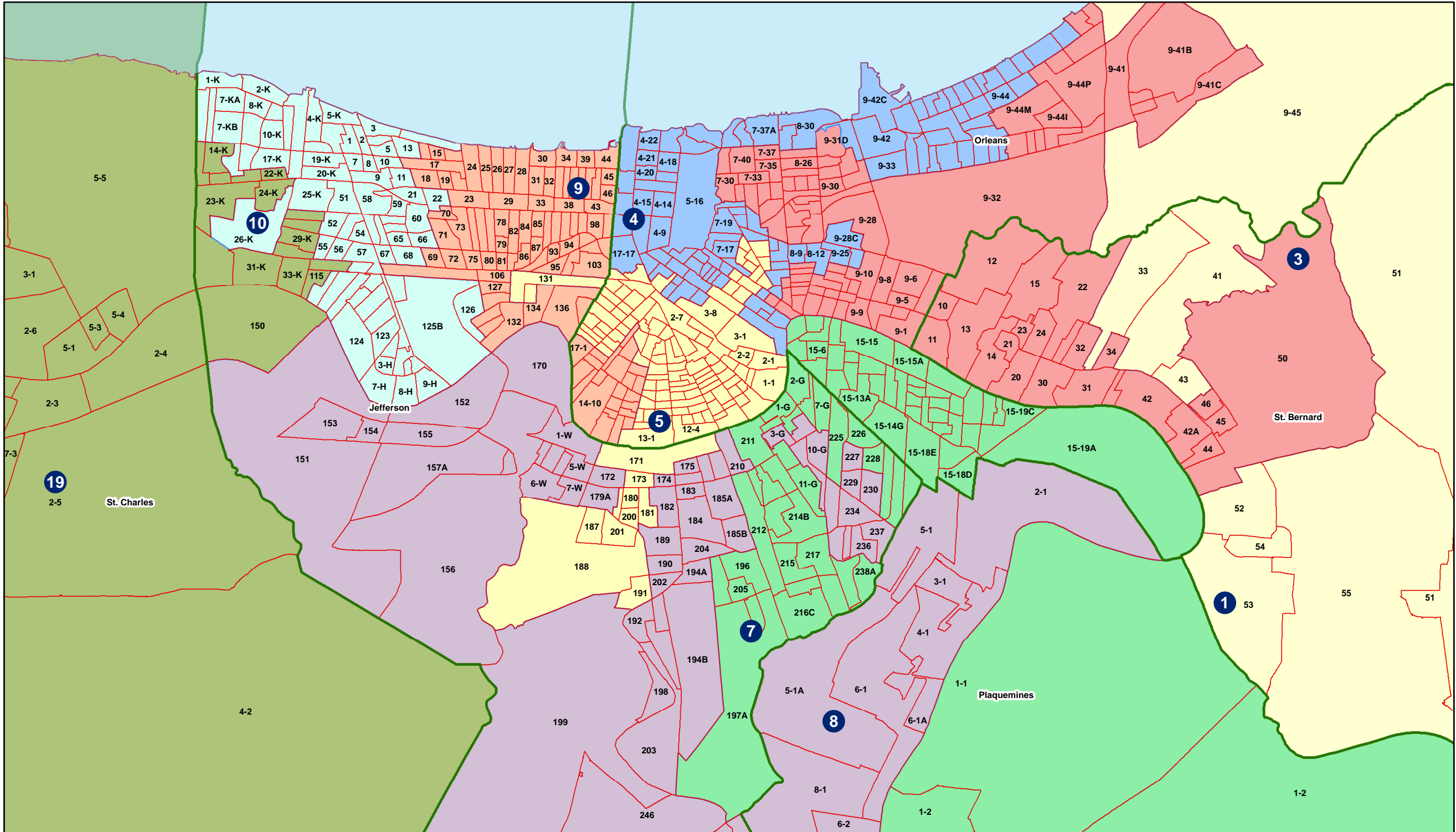
Plan: SLS 24RS-1426 (Connick)

	Total Population	Total White	Total Black	Total Asian	Total American Indian	Total Other	VAP Total	VAP White	VAP Black	VAP Asian	VAP American Indian	VAP Other	Reg Total Dec 2023	Reg White Dec 2023	Reg Black Dec 2023	Reg Other Dec 2023
District 39																
*Caddo	115,122	31,370	78,415	892	1,513	2,932	87,104	26,015	57,312	684	1,135	1,958	61,866	17,715	41,885	2,266
District 39	124,908	35,055	82,691	1,109	1,718	4,335	94,421	29,166	60,190	873	1,307	2,885	65,239	19,400	43,237	2,602
	100.000%	28.065%	66.202%	0.888%	1.375%	3.471%	100.000%	30.889%	63.746%	0.925%	1.384%	3.055%	69.094%	29.737%	66.275%	3.988%

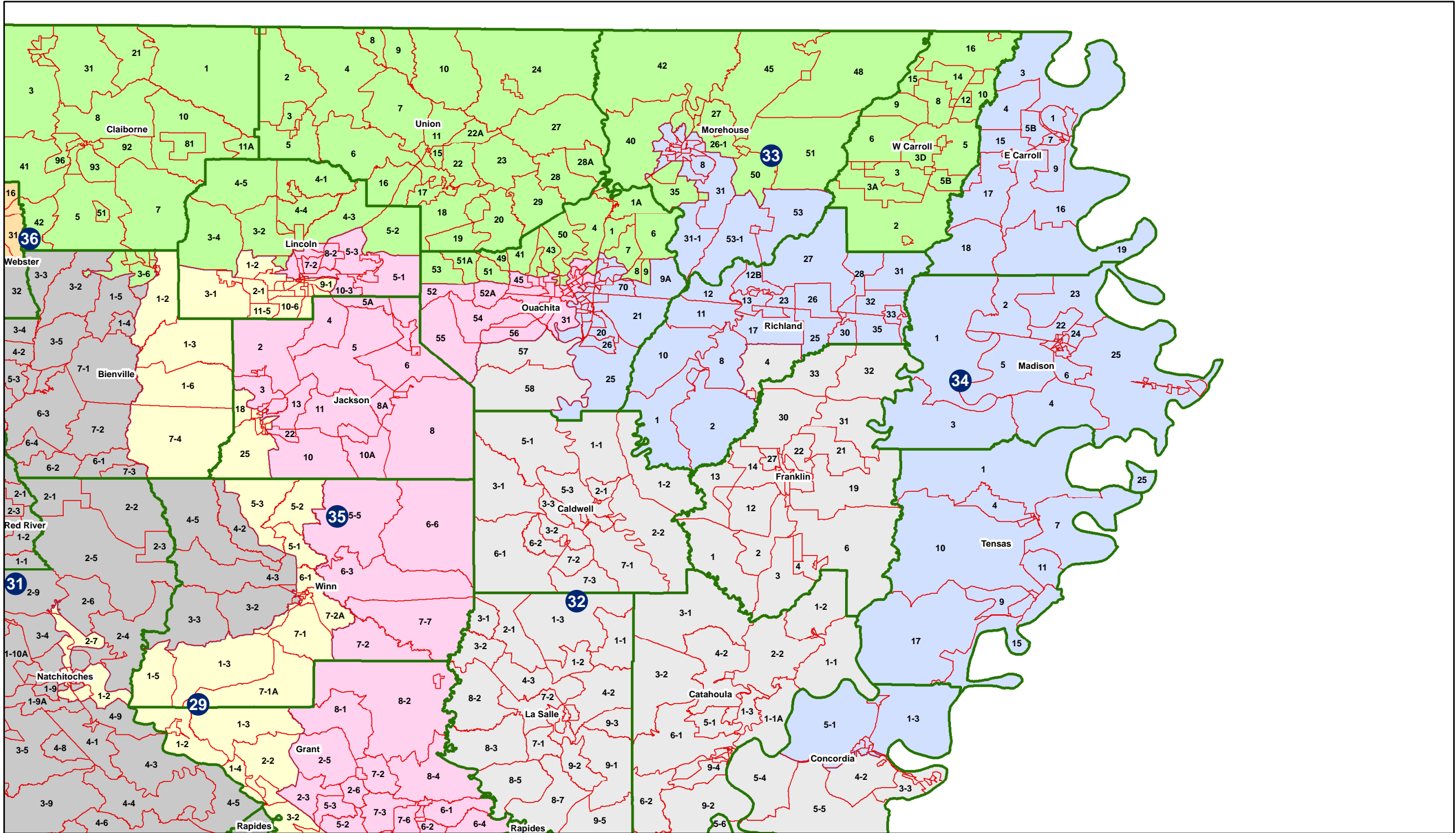
Statewide



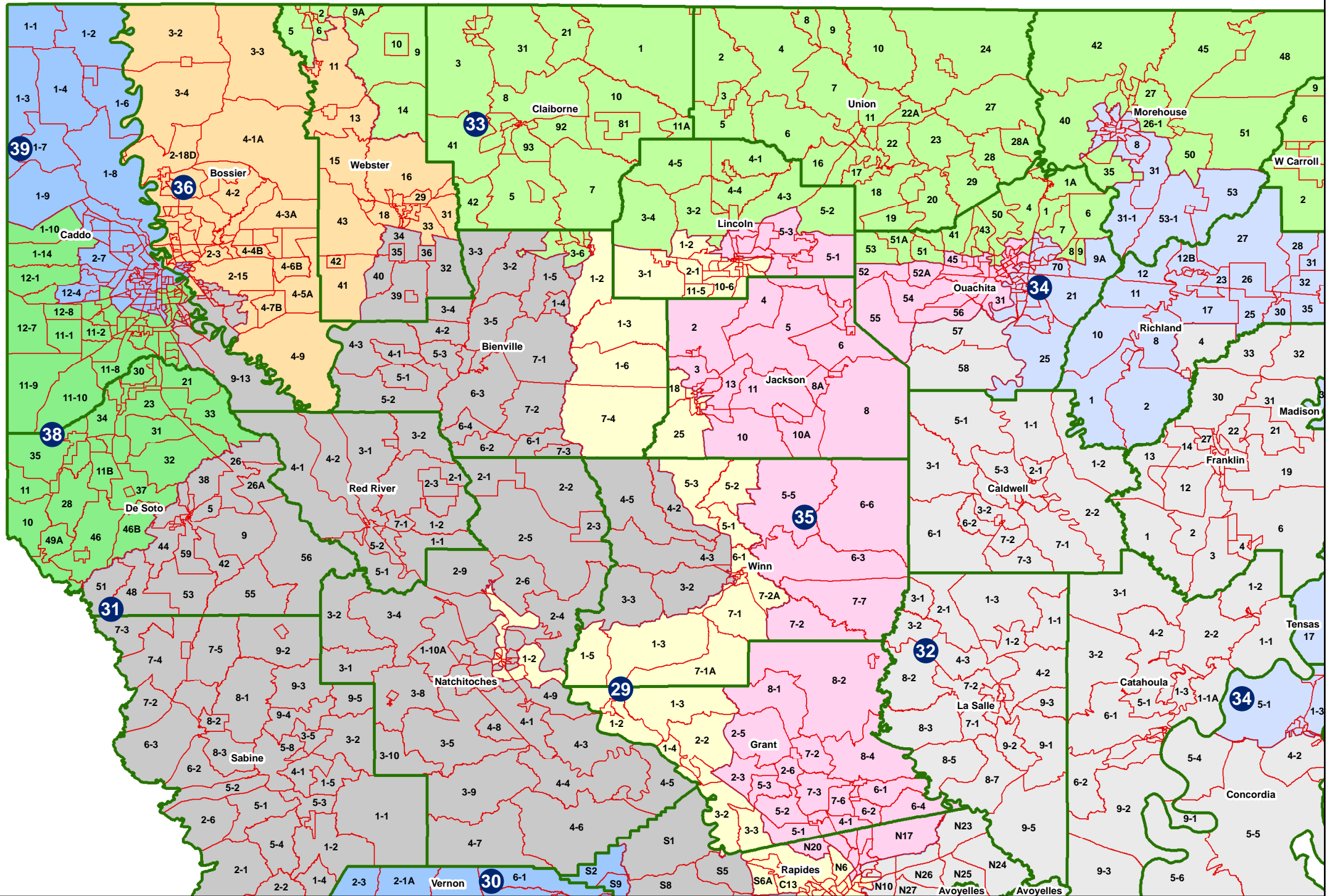
Jefferson-Orleans



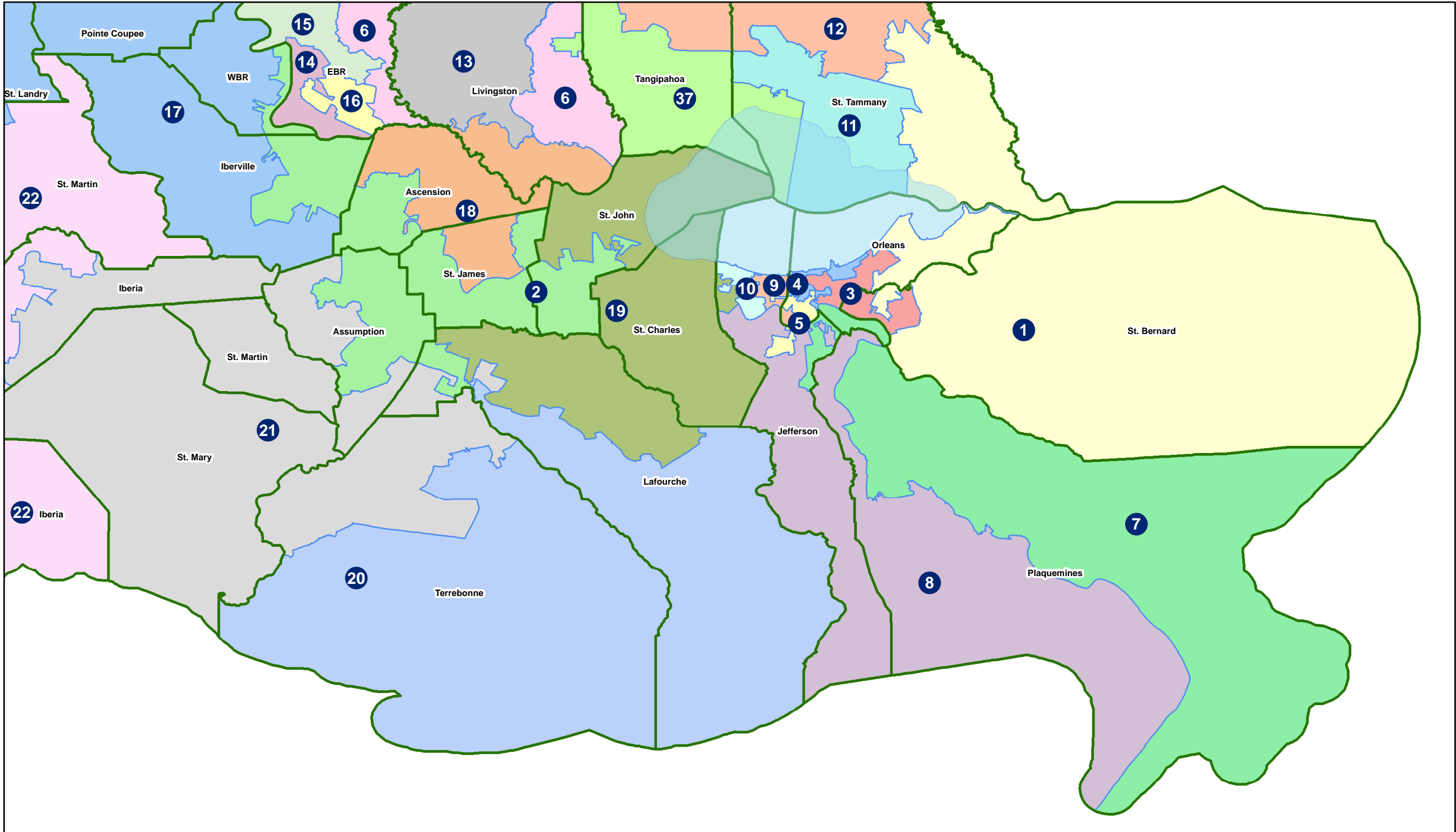
Northeast



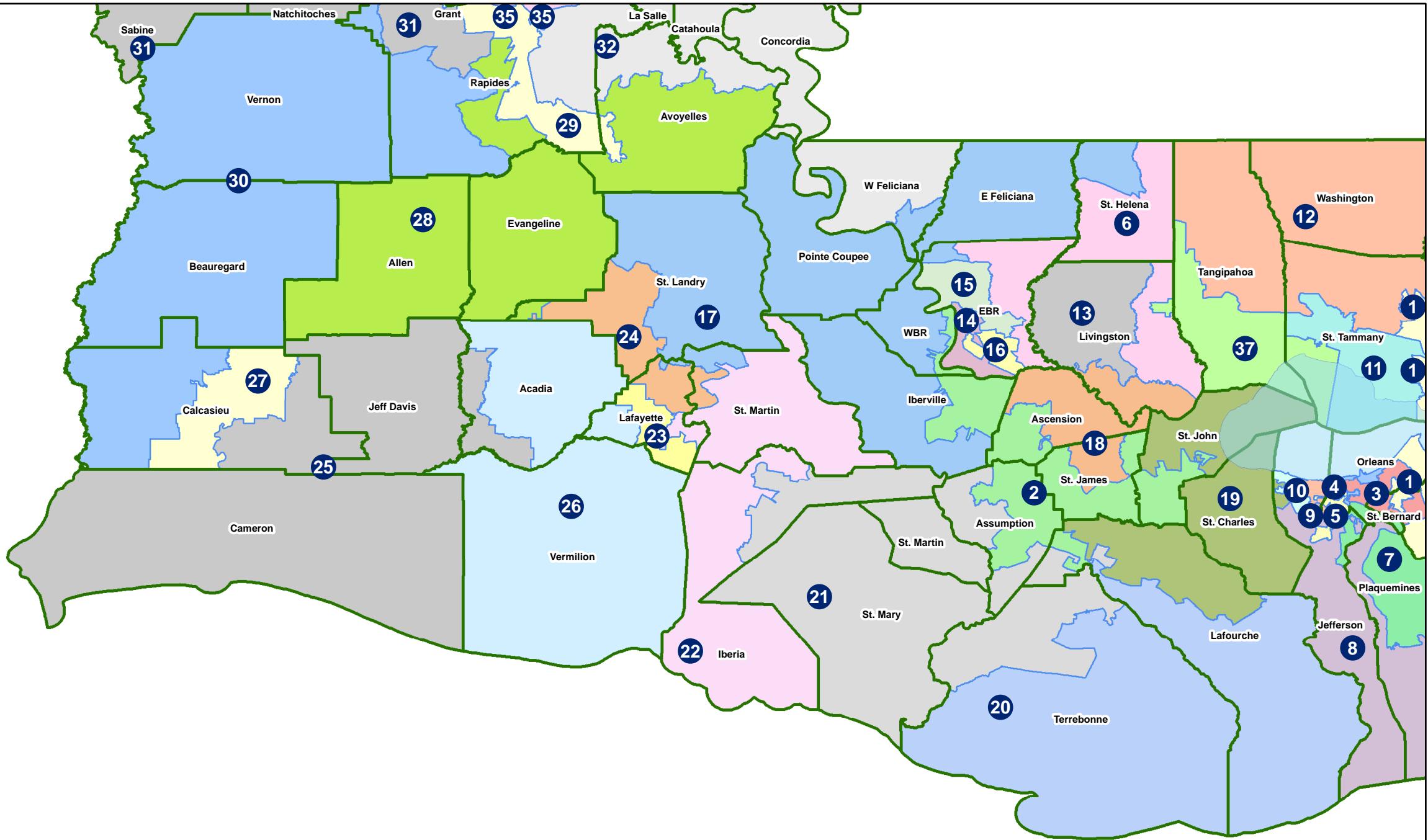
Northwest



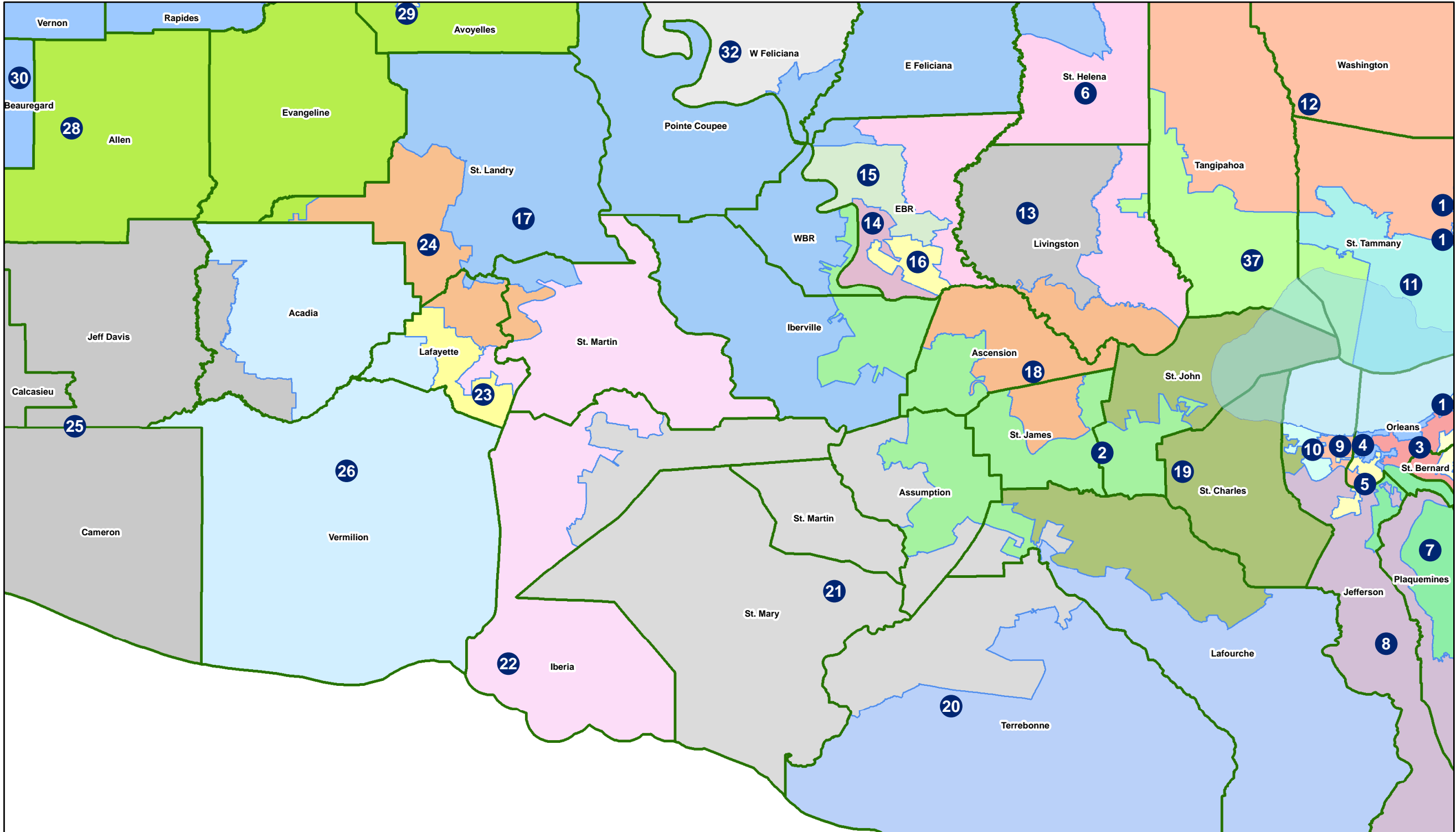
Southeast



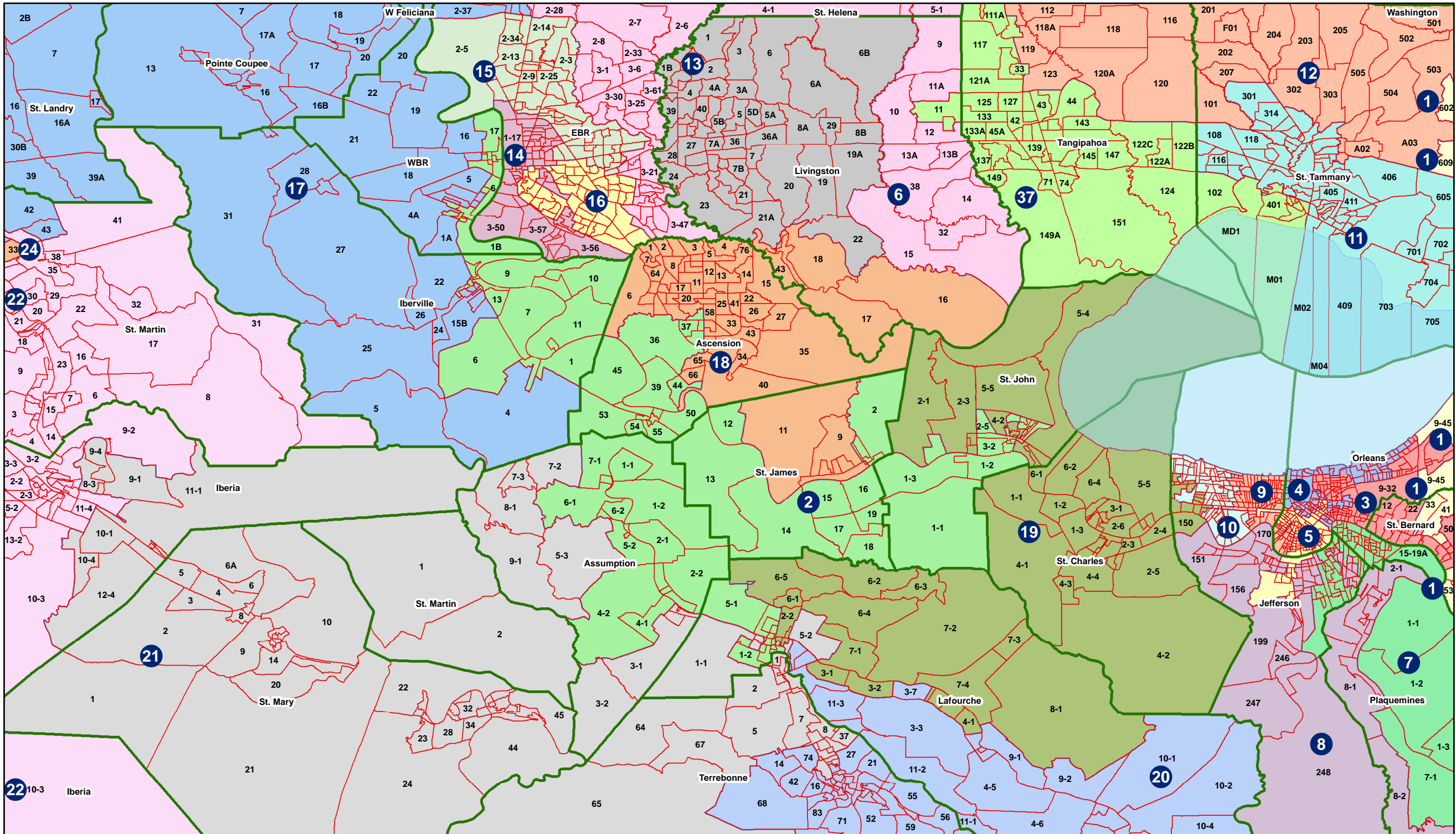
Southwest



Acadiana-Bayou



River



Florida Parishes

