

First Extraordinary Session, 2011

SENATE BILL NO. 3

BY SENATOR JACKSON

CONGRESS. Provides for the redistricting of Louisiana's congressional districts.

1 AN ACT

2 To enact R.S. 18:1276.1 and to repeal R.S. 18:1276, relative to congressional districts; to
3 provide for the redistricting of Louisiana's seven congressional districts into six
4 congressional districts; to provide for the terms of members serving on the effective
5 date of the Act; to provide for filling of vacancies; to provide with respect to
6 positions and offices, other than congressional, which are based upon congressional
7 districts; to provide for the effectiveness of the Act; and to provide for related
8 matters.

9 Be it enacted by the Legislature of Louisiana:

10 Section 1. R.S. 18:1276.1 is hereby enacted to read as follows:

11 **§1276.1. Congressional Districts**

12 **A. Louisiana is divided into six congressional districts, and the qualified**
13 **electors of each district shall elect one representative to the United States House**
14 **of Representatives.**

15 **(1) District 1 is composed of Precincts 1, 2, 3, 4, 5, 7, 8, 9, 10, 11, 12, 13,**
16 **14, 15, 16, 17, 18, 19, 20, 21, 22, 23, 24, 25, 26, 27, 28, 29, 30, 31, 32, 33, 34, 35, 36,**
17 **37, 38, 39, 40, 41, 42, 43, 44, 45, 46, 51, 52, 53, 54, 55, 56, 58, 59, 60, 61, 62, 63, 64,**

1 65, 66, 67, 68, 69, 70, 71, 72, 73, 74, 75, 76, 77, 78, 79, 80, 81, 82, 83, 84, 85, 86, 87,
2 88, 89, 90, 91, 92, 93, 94, 95, 96, 97, 98, 99, 100, 101, 102, 103, 105, 106, 117, 118,
3 119, 120, 121, 122, 123, 124, 125, 126, 127, 128, 129, 130, 132, 134, 136, 198, 199,
4 246, 247, 248, 1-GI, 1-H, 2-H, 3-H, 4-H, 5-H, 6-H, 7-H, 8-H, 9-H, 1-K, 2-K, 3-K,
5 4-K, 5-K, 6-K, 7-K, 8-K, 9-K, 10-K, 11-K, 12-K, 13-KA, 14-K, 15-K, 16-K, 17-K,
6 18-K, 19-K, 20-K, 25-K, 34-K, 35-K and 1-L of Jefferson Parish; Lafourche
7 Parish; Precincts 4-9, 4-11, 4-14, 4-15, 4-17, 4-17A, 4-18, 4-20, 4-21, 4-22, 4-23,
8 5-16, 5-17, 5-18, 7-41, 7-42, 14-1, 14-2, 14-3, 14-4, 14-5, 14-6, 14-7, 14-8, 14-9,
9 14-10, 14-11, 16-1, 16-1A, 16-2, 17-1, 17-17, 17-18, 17-18A, 17-19 and 17-20 of
10 Orleans Parish; Plaquemines Parish; St. Bernard Parish; Precincts 1-6, 2-1, 2-2,
11 2-5, 3-1, 3-2, 3-3, 3-4, 3-5, 3-6, 4-1, 4-2, 4-3, 5-2, 5-3, 5-5, 6-1, 6-2, 6-3, 6-4, 6-7,
12 6-8, 7-1, 7-2 and 7-3 of St. Charles Parish; Precincts 3, 4, 6, 8, 8-A, 9, 10, 17-A
13 and 18 of St. James Parish; Precincts 1-1, 2-1, 4-8, 4-9, 5-3, 5-4, 5-6, 5-7, 7-2, 7-3,
14 7-4, 7-5 and 7-7 of St. John the Baptist Parish; Precincts 102, 104, 311, 312, 401,
15 403, 404, 405, 407, 408, 409, 410, 411, 412, 413, 414, 415, 416, 417, 418, 420, 421,
16 422, 423, 424, 426, 427, 503, 601, 602, 603, 604, 605, 606, 607, 701, 702, 703, 704,
17 705, 706, 801, 802, 803, 804, 805, 806, 807, 808, 809, 810, 811, 812, 813, 814, 815,
18 816, 817, 901, 902, 903, 904, 905, 906, 907, 908, 909, 910, 911, 912, 913, 914, 915,
19 916, 917, 918, 921, M01, M02, M03, M04, M05, M06, M07, M08, M09, M10,
20 MD1, P01, S01, S02, S03, S04, S05, S06, S07, S08, S09, S10, S11, S12, S13, S15,
21 S16, S17, S18, S19, S21, S22, S23, S24 and S25 of St. Tammany Parish and
22 Terrebonne Parish.

23 (2) District 2 is composed of Precincts 30, 36, 37, 39, 40, 42, 44, 45, 47,
24 48, 49, 50, 51, 52, 53, 54, 55, 56, 57 and 60 of Ascension Parish; Precincts 1-1,
25 1-2, 2-2, 2-3, 6-1, 6-2 and 7-1 of Assumption Parish; Precincts 1-1, 1-3, 1-4, 1-5,
26 1-6, 1-10, 1-13, 1-14, 1-15, 1-16, 1-17, 1-18, 1-19, 1-21, 1-22, 1-23, 1-24, 1-25, 1-26,
27 1-27, 1-28, 1-29, 1-30, 1-31, 1-32, 1-38, 1-45, 1-50, 1-51, 1-58, 1-61, 1-62, 1-63,
28 1-67, 1-68, 1-77, 1-84, 1-85, 1-86, 1-91, 1-92, 1-93, 1-94, 1-95, 1-100, 1-101, 2-1,
29 2-5, 2-9, 2-13, 2-16, 2-20, 2-22, 2-23, 2-24 and 2-30 of East Baton Rouge Parish;

1 Precincts 1, 2, 3, 6, 7, 8, 10, 11, 12, 13, 13A, 13B, 13C, 14, 14A, 14B, 15, 15A,
 2 15B, 16, 17, 17A, 18, 19, 19A, 20, 21, 22, 23, 28, 29, 30, 31 and 32 of Iberville
 3 Parish; Precincts 57, 104, 107, 108, 115, 116, 131, 133, 138, 150, 151, 152, 153,
 4 154, 155, 156, 157A, 157B, 170, 171, 172, 173, 174, 175, 176, 177, 178, 179A,
 5 179B, 180, 181, 182, 183, 184, 185A, 185B, 187, 188, 189, 190, 191, 192, 193,
 6 194A, 194B, 195, 196, 197A, 197B, 197C, 200, 201, 202, 203, 204, 205, 210, 211,
 7 212A, 212B, 213A, 213B, 213C, 214A, 214B, 215, 216A, 216B, 217, 225, 226, 227,
 8 228, 229, 230, 231, 232A, 232B, 234, 235, 236, 237, 238, 1-G, 2-G, 3-G, 4-G, 5-G,
 9 6-G, 7-G, 8-G, 9-G, 10-G, 11-G, 12-G, 13-G, 13-KB, 21-K, 22-K, 23-K, 24-K,
 10 26-K, 27-K, 28-K, 29-K, 30-K, 31-K, 33-K, 1-W, 2-W, 3-W, 4-W, 5-W, 6-W and
 11 7-W of Jefferson Parish; Precincts 1-1, 1-2, 1-5, 1-6, 2-1, 2-2, 2-3, 2-4, 2-6, 2-6A,
 12 2-7, 3-1, 3-3, 3-5, 3-8, 3-9, 3-12, 3-14, 3-15, 3-18, 3-19, 3-20, 4-2, 4-3, 4-4, 4-5, 4-6,
 13 4-7, 4-8, 5-1, 5-2, 5-3, 5-4, 5-5, 5-7, 5-8, 5-9, 5-10, 5-11, 5-12, 5-13, 5-15, 6-1, 6-2,
 14 6-4, 6-6, 6-7, 6-8, 6-9, 7-1, 7-2, 7-4, 7-5, 7-6, 7-7, 7-8, 7-9A, 7-10, 7-11, 7-12, 7-13,
 15 7-14, 7-15, 7-16, 7-17, 7-18, 7-19, 7-20, 7-21, 7-23, 7-24, 7-25, 7-25A, 7-26, 7-27,
 16 7-27B, 7-28, 7-28A, 7-29, 7-30, 7-32, 7-33, 7-34, 7-35, 7-37, 7-37A, 7-40, 8-1, 8-2,
 17 8-4, 8-6, 8-7, 8-8, 8-9, 8-12, 8-13, 8-14, 8-15, 8-19, 8-20, 8-21, 8-22, 8-23, 8-24,
 18 8-25, 8-26, 8-27, 8-28, 8-30, 9-1, 9-3, 9-3A, 9-4, 9-5, 9-5A, 9-6B, 9-6C, 9-6D, 9-6E,
 19 9-6F, 9-7, 9-8, 9-8A, 9-9, 9-10, 9-11, 9-12, 9-13, 9-14, 9-15, 9-16, 9-17, 9-19, 9-21,
 20 9-23, 9-25, 9-26, 9-28, 9-28C, 9-28E, 9-29, 9-30, 9-30A, 9-31, 9-31A, 9-31B,
 21 9-31D, 9-32, 9-33, 9-34A, 9-35, 9-35A, 9-36, 9-36B, 9-37, 9-38, 9-38A, 9-39,
 22 9-39B, 9-40, 9-40A, 9-40C, 9-41, 9-41A, 9-41B, 9-41C, 9-41D, 9-42, 9-42C, 9-43A,
 23 9-43B, 9-43C, 9-43E, 9-43F, 9-43G, 9-43H, 9-43I, 9-43J, 9-43K, 9-43L, 9-43M,
 24 9-43N, 9-44, 9-44A, 9-44B, 9-44D, 9-44E, 9-44F, 9-44G, 9-44I, 9-44J, 9-44L,
 25 9-44M, 9-44N, 9-44O, 9-44P, 9-44Q, 9-45, 9-45A, 10-3, 10-6, 10-7, 10-8, 10-9,
 26 10-11, 10-12, 10-13, 10-14, 11-2, 11-3, 11-4, 11-5, 11-8, 11-9, 11-10, 11-11, 11-12,
 27 11-13, 11-14, 11-17, 12-1, 12-2, 12-3, 12-4, 12-5, 12-6, 12-7, 12-8, 12-9, 12-10,
 28 12-11, 12-12, 12-13, 12-14, 12-16, 12-17, 12-19, 13-1, 13-2, 13-3, 13-4, 13-5, 13-6,
 29 13-7, 13-8, 13-9, 13-10, 13-11, 13-12, 13-13, 13-14, 13-15, 13-16, 14-12, 14-13A,

1 14-14, 14-15, 14-16, 14-17, 14-18A, 14-19, 14-20, 14-21, 14-23, 14-24A, 14-25,
 2 14-26, 15-1, 15-2, 15-3, 15-5, 15-6, 15-8, 15-9, 15-10, 15-11, 15-12, 15-12A, 15-13,
 3 15-13A, 15-13B, 15-14, 15-14A, 15-14B, 15-14C, 15-14D, 15-14E, 15-14F,
 4 15-14G, 15-15, 15-15A, 15-15B, 15-16, 15-17, 15-17A, 15-17B, 15-18, 15-18A,
 5 15-18B, 15-18C, 15-18D, 15-18E, 15-18F, 15-19, 15-19A, 15-19B, 15-19C, 16-3,
 6 16-4, 16-5, 16-6, 16-7, 16-8, 16-9, 17-2, 17-3, 17-4, 17-5, 17-6, 17-7, 17-8, 17-9,
 7 17-10, 17-11, 17-12, 17-13, 17-13A, 17-14, 17-15 and 17-16 of Orleans Parish;
 8 Precincts 1-1, 1-2, 1-3, 1-5, 2-3, 2-4, 4-4, 5-1, 5-4, 6-5, 6-6 and 7-4 of St. Charles
 9 Parish; Precincts 2, 5, 7, 7-A, 11, 12, 13, 14, 15, 15B, 16 and 17 of St. James
 10 Parish; Precincts 1-2, 1-3, 1-4, 1-5, 2-2, 2-3, 2-4, 3-1, 3-2, 3-3, 3-4, 4-1, 4-2, 4-3,
 11 4-4, 5-1, 5-2, 5-5, 6-1, 6-3 and 6-4 of St. John the Baptist Parish and West Baton
 12 Rouge Parish.

13 (3) District 3 is composed of Acadia Parish; Precincts 2-1, 3-1, 3-2, 4-1,
 14 4-2, 5-1, 5-2, 5-3, 5-4, 7-2, 8-1 and 9-1 of Assumption Parish; Calcasieu Parish;
 15 Cameron Parish; Iberia Parish; Precincts 4, 5, 6A, 24, 25, 25A, 25B, 26, 26A and
 16 27 of Iberville Parish; Jefferson Davis Parish; Precincts 2, 3, 4, 5, 6, 7, 8, 9, 10,
 17 11, 12, 13, 14, 15, 16, 17, 18, 19, 20, 21, 22, 23, 24, 25, 26, 27, 28A, 28B, 29, 30A,
 18 31, 32, 33, 34, 35, 36, 37, 38, 39, 40, 41, 42, 43, 44, 45, 46, 47, 48, 49, 50, 51, 52, 53,
 19 54, 55, 56, 57, 58, 59, 60, 61, 62, 63, 64, 65, 66, 67, 68, 69, 70, 71, 72, 73, 74, 75, 76,
 20 77, 78, 79, 80, 81, 82, 83, 84, 85, 86, 87, 88, 89, 90, 91, 92, 93, 94, 95, 96, 97A, 97B,
 21 98, 99, 100, 101, 102, 103, 104, 105, 106, 107, 108, 109, 110 and 111 of Lafayette
 22 Parish; Precincts 1-1, 1-2, 1-3, 1-4, 1-5, 1-7, 2-1, 2-2, 2-3, 2-4, 3-1, 3-1A, 3-1B,
 23 3-2, 3-3, 3-4, 3-4A, 3-5, 3-6, 3-9, 4-1, 4-1A, 4-2, 4-3, 4-4, 4-4A, 4-5, 4-6, 5-1, 5-2,
 24 5-3, 5-4, 6-1, 6-2, 6-2A, 6-3, 6-3A, 6-3B, 6-4, 7-1, 7-1A, 7-2A, 7-3 and 8-4A of St.
 25 Martin Parish; St. Mary Parish and Vermilion Parish.

26 (4) District 4 is composed of Bienville Parish; Bossier Parish; Caddo
 27 Parish; Claiborne Parish; Precincts 1-1, 1-2, 1-3, 1-4, 2-1, 2-4 and 5-1 of
 28 Concordia Parish; De Soto Parish; East Carroll Parish; Lincoln Parish;
 29 Madison Parish; Morehouse Parish; Natchitoches Parish; Precincts 1, 2, 3, 4,

1 5, 6, 7, 8, 9, 9A, 10, 11, 12, 13, 14, 15, 16, 17, 18, 19, 20, 21, 22, 23, 24, 26, 27, 28,
 2 29, 30, 35, 59, 60, 61, 62, 63, 64, 65, 66, 67, 68, 69, 70, 71, 72, 73, 74, 75, 76, 77, 78
 3 and 79 of Ouachita Parish; Red River Parish; Precincts 1, 2, 2A, 4, 4A, 5, 5A,
 4 6, 7, 9, 10, 11, 12, 15 and 16 of Tensas Parish; Union Parish; Webster Parish and
 5 West Carroll Parish.

6 (5) District 5 is composed of Allen Parish; Avoyelles Parish; Beauregard
 7 Parish; Caldwell Parish; Catahoula Parish; Precincts 3-1, 3-2, 3-3, 4-1, 4-2, 4-3,
 8 4-4, 4-6, 5-2, 5-3, 5-4, 5-5, 5-6 and 5-7 of Concordia Parish; Precincts 2-6, 2-7,
 9 2-8, 2-14, 2-18, 2-21, 2-26, 2-28, 2-29 and 2-32 of East Baton Rouge Parish; East
 10 Feliciana Parish; Evangeline Parish; Franklin Parish; Grant Parish; Jackson
 11 Parish; Precincts 1 of Lafayette Parish; La Salle Parish; Precincts 25, 31, 32, 33,
 12 34, 36, 37, 38, 39, 40, 41, 42, 43, 44, 44A, 45, 46, 47, 48, 49, 50, 51, 52, 53, 54, 55,
 13 56, 57 and 58 of Ouachita Parish; Pointe Coupee Parish; Rapides Parish;
 14 Richland Parish; Sabine Parish; St. Helena Parish; St. Landry Parish; Precincts
 15 7-4, 7-4A, 8-1, 8-3, 8-4, 9-1, 9-2, 9-3, 9-4 and 9-5 of St. Martin Parish; Precincts
 16 1, 2, 6, 101, 102, 103 and 104 of Tangipahoa Parish; Precincts 17 of Tensas
 17 Parish; Vernon Parish; West Feliciana Parish and Winn Parish.

18 (6) District 6 is composed of Precincts 1, 2, 3, 4, 5, 6, 7, 8, 9, 10, 11, 12,
 19 13, 14, 15, 16, 17, 18, 19, 20, 21, 22, 23, 24, 25, 26, 27, 28, 31, 32, 33, 34, 35, 41, 43,
 20 58 and 61 of Ascension Parish; Precincts 1-2, 1-7, 1-8, 1-9, 1-12, 1-33, 1-34, 1-35,
 21 1-36, 1-37, 1-39, 1-40, 1-41, 1-42, 1-43, 1-44, 1-46, 1-47, 1-48, 1-49, 1-52, 1-53,
 22 1-54, 1-55, 1-56, 1-57, 1-59, 1-60, 1-64, 1-65, 1-66, 1-69, 1-70, 1-71, 1-72, 1-73,
 23 1-74, 1-75, 1-78, 1-80, 1-81, 1-82, 1-83, 1-87, 1-88, 1-89, 1-90, 1-97, 1-98, 1-99,
 24 1-102, 1-103, 1-104, 1-105, 1-107, 2-2, 2-3, 2-4, 2-10, 2-11, 2-12, 2-15, 2-17, 2-19,
 25 2-25, 2-27, 2-31, 3-1, 3-2, 3-3, 3-4, 3-5, 3-6, 3-7, 3-8, 3-9, 3-10, 3-11, 3-12, 3-13,
 26 3-14, 3-15, 3-16, 3-17, 3-18, 3-19, 3-20, 3-21, 3-22, 3-23, 3-24, 3-25, 3-26, 3-27,
 27 3-28, 3-29, 3-30, 3-31, 3-32, 3-33, 3-34, 3-35, 3-36, 3-37, 3-38, 3-39, 3-40, 3-41,
 28 3-42, 3-43, 3-44, 3-45, 3-46, 3-47, 3-48, 3-49, 3-50, 3-51, 3-52, 3-53, 3-54 and 3-55
 29 of East Baton Rouge Parish; Livingston Parish; Precincts 101, 103, 105, 106,

1 107, 201, 202, 203, 204, 205, 206, 207, 301, 302, 303, 304, 305, 306, 307, 308, 309,
2 310, 313, 402, 406, 419, 501, 502, 504, 505, A01, A02, A03, A04, C01, C02, C03,
3 C04, C05, C06, C07, C08, C09, C10, C11 and F01 of St. Tammany Parish;
4 Precincts 11, 15, 16, 17, 18, 26, 27, 27A, 28, 28A, 33, 40, 40A, 41, 42, 42A, 43, 44,
5 45, 45A, 46, 47, 48, 49, 70, 70A, 71, 72, 72A, 73, 74, 104A, 105, 106, 106A, 106B,
6 107, 108, 109, 109A, 110, 111, 111A, 112, 114, 115B, 116, 117, 118, 119, 120,
7 120A, 120B, 121, 121A, 121B, 122, 122A, 123, 124, 125, 127, 127A, 129, 129A,
8 133, 133A, 137, 137A, 137B, 137C, 137D, 139, 141, 141A, 143, 145, 149, 149A
9 and 151 of Tangipahoa Parish and Washington Parish.

10 B. The precincts referenced in this Section are those precincts identified
11 as Voting Districts (VTDs) in the 2010 Census Redistricting TIGER/Line
12 Shapefiles for the State of Louisiana.

13 C. When a precinct referenced in this Section has been subdivided by
14 action of the parish governing authority on a nongeographic basis or subdivided
15 by action of the parish governing authority on a geographic basis in accordance
16 with the provisions of R.S. 18:532.1, the enumeration in this Section of the
17 general precinct designation shall include all nongeographic and all geographic
18 subdivisions thereof, however such subdivisions may be designated. The
19 territorial limits of the districts as provided in this Section shall continue in
20 effect without change regardless of any changes made to the precincts by the
21 parish governing authority.

22 D. This Section shall not reduce the term of office of any member of
23 congress who was elected at the 2010 congressional election or who was elected
24 to fill a vacancy for the remainder of a term which began on January 3, 2011.

25 E. A vacancy in the representation of any congressional district that is
26 filled after January 3, 2013, shall be filled as provided by law from that district
27 as it is described in this Section.

28 F. This Section shall not reduce the term of office of any person holding
29 any position or office on January 3, 2013, for which the appointment or election

1 **is based upon a congressional district. Any position or office filled after**
2 **January 3, 2013, for which the appointment or election is based on a**
3 **congressional district shall be appointed or elected from that district as it is**
4 **described in this Section.**

5 Section 2. R.S. 18:1276 is hereby repealed effective at noon on January 3, 2013.

6 Section 3. The provisions of Section 1 of this Act shall become effective solely for
7 the purposes of the election of representatives to the United States Congress at the next
8 regularly scheduled election for representatives to the congress in 2012, commencing on the
9 date and at the time that the qualifying period opens for such offices. The effectiveness of
10 Section 1 of this Act for such purposes shall not reduce the term of office of any member of
11 the congress or change the district which any member represents pursuant to RS. 18:1276.
12 For subsequent elections of representatives to the United States Congress and for all other
13 purposes, the provisions of Section 1 of this Act shall become effective at noon on January
14 3, 2013.

The original instrument and the following digest, which constitutes no part
of the legislative instrument, were prepared by Yolanda J. Dixon.

DIGEST

Jackson (SB 3)

Present law provides for seven La. congressional districts.

Proposed law repeals present law, and further redistricts the present La. congressional districts to provide for six La. congressional districts.

Effective for election purposes only for the regular congressional elections in 2012; effective for all purposes on 1/3/2013.

(Enacts R.S. 18:1276.1; repeals R.S. 18:1276)

Plan Statistics

<u>Districts:</u>	<u># of Members</u>	<u>Actual Population</u>	<u>Ideal Population</u>	<u>Absolute Deviation</u>	<u>Relative Deviation</u>
District 1	1	755,535	755,562	-27	-0.004%
District 2	1	755,559	755,562	-3	0.000%
District 3	1	755,592	755,562	30	0.004%
District 4	1	755,585	755,562	23	0.003%
District 5	1	755,526	755,562	-36	-0.005%
District 6	1	755,575	755,562	13	0.002%
Grand Total:	6	4,533,372	4,533,372		

Ideal Population Per Member:	755562		
Number of Districts for Plan Type:	6		
Range of District Populations:	755,526	to	755,592
Absolute Mean Deviation:	11		
Absolute Range:	-36	to	30
Absolute Overall Range:	66		
Relative Mean Deviation:	0.00%		
Relative Range:	0.00%	to	0.00%
Relative Overall Range:	0.00%		

<i>Ideal - Actual:</i>	0
<i>Remainder:</i>	0
<i>Unassigned Population:</i>	0

Total Population

	Total Population	Total White	Total Black	Total Asian	Total American Indian	Total Other	Total Hispanic	Reg Total Jan 2011
District 1	755,535	591,316	108,733	17,383	15,770	22,333	56,953	446,129
	100.000%	78.265%	14.392%	2.301%	2.087%	2.956%	7.538%	77.420%
District 2	755,559	240,332	471,231	20,941	4,064	18,991	43,785	452,014
	100.000%	31.809%	62.369%	2.772%	0.538%	2.514%	5.795%	78.890%
District 3	755,592	534,181	192,939	11,321	6,045	11,106	22,997	459,114
	100.000%	70.697%	25.535%	1.498%	0.800%	1.470%	3.044%	81.649%
District 4	755,585	409,996	322,063	8,669	5,602	9,255	20,173	442,531
	100.000%	54.262%	42.624%	1.147%	0.741%	1.225%	2.670%	77.690%
District 5	755,526	516,403	214,739	6,415	10,375	7,594	18,181	449,525
	100.000%	68.350%	28.422%	0.849%	1.373%	1.005%	2.406%	79.572%
District 6	755,575	543,964	177,180	16,822	4,697	12,912	30,471	431,062
	100.000%	71.993%	23.450%	2.226%	0.622%	1.709%	4.033%	75.718%
Grand Total	4,533,372	2,836,192	1,486,885	81,551	46,553	82,191	192,560	2,680,375
	100.000%	62.563%	32.799%	1.799%	1.027%	1.813%	4.248%	78.480%

Voter Registration

	Reg Total Jan 2011	Reg White Jan 2011	Reg Black Jan 2011	Reg Other Jan 2011	Reg Dem Total Jan 2011	Reg Rep Total Jan 2011	Reg Other Total Jan 2011
District 1	446,129	368,203	49,211	28,715	175,347	158,352	112,430
	77.420%	82.533%	11.031%	6.436%	39.304%	35.495%	25.201%
District 2	452,014	147,133	276,452	28,429	303,175	51,671	97,168
	78.890%	32.551%	61.160%	6.289%	67.072%	11.431%	21.497%
District 3	459,114	338,334	106,673	14,107	231,583	120,196	107,335
	81.649%	73.693%	23.235%	3.073%	50.441%	26.180%	23.379%
District 4	442,531	253,249	174,974	14,308	225,749	123,239	93,543
	77.690%	57.227%	39.539%	3.233%	51.013%	27.849%	21.138%
District 5	449,525	320,872	116,319	12,334	241,499	114,813	93,213
	79.572%	71.380%	25.876%	2.744%	53.723%	25.541%	20.736%
District 6	431,062	333,326	80,448	17,288	177,633	149,919	103,510
	75.718%	77.327%	18.663%	4.011%	41.208%	34.779%	24.013%
Grand Total	2,680,375	1,761,117	804,077	115,181	1,354,986	718,190	607,199

Splits

	Total Population	Total White	Total Black	Total Asian	Total American Indian	Total Other	VAP Total	VAP White	VAP Black	VAP Asian	VAP American Indian	VAP Other	Reg Total Jan 2011	Reg White Jan 2011	Reg Black Jan 2011	Reg Other Jan 2011
District 1																
*Jefferson	228,815	182,924	24,111	8,842	1,630	11,308	183,437	149,655	17,160	6,778	1,243	8,601	136,353	115,685	8,564	12,104
Lafourche	96,318	76,445	13,363	855	3,457	2,198	72,652	59,362	8,945	612	2,187	1,546	53,711	45,827	6,316	1,568
*Orleans	29,262	25,935	1,994	780	139	414	23,913	21,349	1,538	606	101	319	19,689	17,234	1,017	1,438
Plaquemines	23,042	16,246	4,951	844	556	445	16,713	12,086	3,367	583	396	281	14,534	10,541	3,075	918
St. Bernard	35,897	26,579	6,705	873	522	1,218	26,720	20,490	4,338	640	370	882	23,358	19,332	2,829	1,197
*St. Charles	35,691	29,555	4,749	457	291	639	26,058	22,003	3,111	281	201	462	21,803	18,479	2,308	1,016
*St. James	10,763	7,669	2,991	33	28	42	7,912	5,825	2,022	19	23	23	6,719	5,174	1,443	102
*St. John the Baptist	16,592	10,652	5,135	260	111	434	12,385	8,315	3,496	186	73	315	10,162	6,914	2,713	535
*St. Tammany	167,295	136,720	22,662	3,106	1,661	3,146	123,719	103,233	14,985	2,093	1,212	2,196	100,501	83,680	10,678	6,143
Terrebonne	111,860	78,591	22,072	1,333	7,375	2,489	82,737	60,621	14,647	986	4,725	1,758	59,299	45,337	10,268	3,694
District 1	755,535	591,316	108,733	17,383	15,770	22,333	576,246	462,939	73,609	12,784	10,531	16,383	446,129	368,203	49,211	28,715
	100.000%	78.265%	14.392%	2.301%	2.087%	2.956%	100.000%	80.337%	12.774%	2.218%	1.828%	2.843%	77.420%	82.533%	11.031%	6.436%
District 2																
*Ascension	23,281	8,557	14,079	142	81	422	16,884	6,818	9,626	112	59	269	14,224	5,607	8,215	402
*Assumption	8,777	4,054	4,616	16	34	57	6,551	3,236	3,236	10	22	47	5,609	2,665	2,916	28
*East Baton Rouge	95,909	6,714	88,203	305	231	456	69,558	5,994	62,805	244	177	338	57,569	4,027	51,814	1,728
*Iberville	27,740	11,272	16,106	110	74	178	21,512	9,335	11,904	75	64	134	16,500	6,885	9,384	231
*Jefferson	203,737	89,191	92,888	9,801	1,772	10,085	151,718	71,618	64,142	7,332	1,246	7,380	115,724	53,442	51,569	10,713
*Orleans	314,567	87,493	208,453	10,171	1,557	6,893	246,701	78,331	153,156	8,234	1,298	5,682	192,083	53,202	124,631	14,250
*St. Charles	17,089	6,985	9,646	118	80	260	12,514	5,442	6,757	76	62	177	9,902	4,434	5,146	322
*St. James	11,339	2,946	8,299	10	24	60	8,489	2,406	6,017	7	18	41	7,984	2,075	5,817	92
*St. John the Baptist	29,332	8,849	19,809	154	126	394	21,183	7,093	13,631	104	91	264	17,623	5,552	11,552	519
West Baton Rouge	23,788	14,271	9,132	114	85	186	17,861	11,067	6,517	92	67	118	14,796	9,244	5,408	144
District 2	755,559	240,332	471,231	20,941	4,064	18,991	572,971	201,340	337,791	16,286	3,104	14,450	452,014	147,133	276,452	28,429
	100.000%	31.809%	62.369%	2.772%	0.538%	2.514%	100.000%	35.140%	58.954%	2.842%	0.542%	2.522%	78.890%	32.551%	61.160%	6.289%
District 3																
Acadia	61,773	49,127	11,645	196	313	492	44,910	36,554	7,668	131	213	344	37,256	30,346	6,441	469
*Assumption	14,644	11,581	2,634	52	156	221	11,114	8,960	1,863	41	103	147	9,179	7,428	1,670	81
Calcasieu	192,768	136,514	49,825	2,550	1,626	2,253	143,756	105,077	34,139	1,846	1,187	1,507	117,844	86,021	27,975	3,848
Cameron	6,839	6,546	135	10	60	88	5,183	5,011	74	9	38	51	5,536	5,272	188	76
Iberia	73,240	45,551	24,091	1,926	428	1,244	53,398	35,137	15,754	1,308	307	892	45,139	30,016	13,917	1,206
*Iberville	5,647	5,008	514	14	43	68	4,373	3,919	354	10	34	56	3,952	3,529	370	53
Jefferson Davis	31,594	25,125	5,836	98	275	260	23,196	18,871	3,891	66	180	188	19,337	15,808	3,132	397
*Lafayette	218,692	151,539	58,280	3,875	1,263	3,735	165,217	118,927	39,806	2,873	931	2,680	129,400	94,292	29,844	5,264

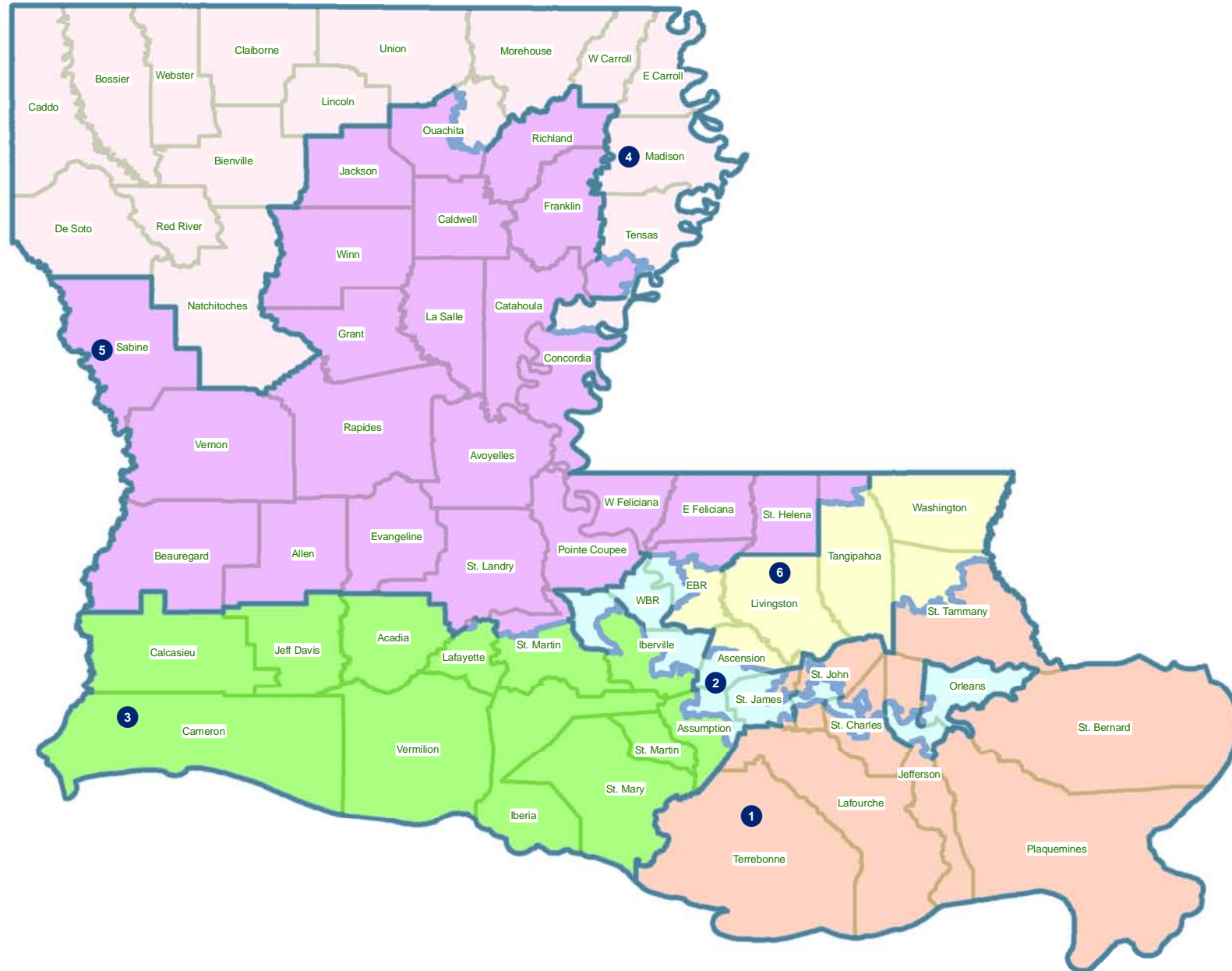
Splits

	Total Population	Total White	Total Black	Total Asian	Total American Indian	Total Other	VAP Total	VAP White	VAP Black	VAP Asian	VAP American Indian	VAP Other	Reg Total Jan 2011	Reg White Jan 2011	Reg Black Jan 2011	Reg Other Jan 2011
District 3																
*St. Martin	37,746	23,862	13,035	268	236	345	27,884	18,439	8,883	174	150	238	24,873	16,199	7,981	693
St. Mary	54,650	32,406	18,290	1,058	1,269	1,627	40,746	25,191	12,797	773	837	1,148	31,845	20,072	10,527	1,246
Vermilion	57,999	46,922	8,654	1,274	376	773	42,522	35,424	5,457	902	259	480	34,753	29,351	4,628	774
District 3	755,592	534,181	192,939	11,321	6,045	11,106	562,299	411,510	130,686	8,133	4,239	7,731	459,114	338,334	106,673	14,107
	100.000%	70.697%	25.535%	1.498%	0.800%	1.470%	100.000%	73.183%	23.241%	1.446%	0.754%	1.375%	81.649%	73.693%	23.235%	3.073%
District 4																
Bienville	14,353	7,935	6,153	44	132	89	11,012	6,279	4,544	31	105	53	9,256	5,112	4,085	59
Bossier	116,979	84,430	25,606	2,516	1,139	3,288	86,945	64,692	17,413	1,836	837	2,167	60,834	46,663	11,491	2,680
Caddo	254,969	124,942	122,229	3,230	1,906	2,662	192,315	100,748	85,902	2,363	1,455	1,847	151,374	79,163	66,708	5,503
Claiborne	17,195	8,167	8,820	62	99	47	13,815	6,781	6,889	37	80	28	8,877	4,908	3,872	97
*Concordia	7,201	2,228	4,900	20	35	18	5,188	1,911	3,233	16	19	9	4,501	1,729	2,713	59
De Soto	26,656	15,456	10,600	54	331	215	20,006	12,055	7,495	42	273	141	16,396	9,663	6,191	542
East Carroll	7,759	2,245	5,398	47	31	38	5,766	1,845	3,830	37	25	29	5,330	1,617	3,664	49
Lincoln	46,735	25,775	19,184	874	230	672	37,130	20,875	14,821	749	183	502	24,016	14,604	8,519	893
Madison	12,093	4,498	7,452	33	55	55	9,071	3,644	5,312	20	45	50	7,634	2,780	4,764	90
Morehouse	27,979	14,345	13,281	142	102	109	21,061	11,583	9,230	102	79	67	18,681	10,048	8,329	304
Natchitoches	39,566	21,494	16,778	197	649	448	29,966	17,226	11,771	151	477	341	22,982	13,181	8,878	923
*Ouachita	94,717	39,598	53,037	1,160	322	600	69,299	32,167	35,597	872	247	416	56,878	25,669	28,985	2,224
Red River	9,091	5,360	3,633	16	43	39	6,778	4,256	2,450	12	34	26	5,981	3,566	2,377	38
*Tensas	4,760	1,875	2,836	11	11	27	3,526	1,527	1,965	9	5	20	3,747	1,551	2,177	19
Union	22,721	15,682	6,242	49	115	633	17,493	12,568	4,439	31	91	364	14,964	10,863	3,709	392
Webster	41,207	26,469	14,044	180	316	198	31,497	20,907	10,110	120	241	119	23,913	16,115	7,416	382
West Carroll	11,604	9,497	1,870	34	86	117	8,746	7,254	1,330	24	62	76	7,167	6,017	1,096	54
District 4	755,585	409,996	322,063	8,669	5,602	9,255	569,614	326,318	226,331	6,452	4,258	6,255	442,531	253,249	174,974	14,308
	100.000%	54.262%	42.624%	1.147%	0.741%	1.225%	100.000%	57.288%	39.734%	1.133%	0.748%	1.098%	77.690%	57.227%	39.539%	3.233%
District 5																
Allen	25,764	18,435	6,192	220	749	168	19,870	14,288	4,828	154	495	105	13,110	10,190	2,397	523
Avoyelles	42,073	28,188	12,876	174	641	194	31,790	21,850	9,247	126	431	136	23,105	16,874	5,790	441
Beauregard	35,654	29,321	5,016	353	652	312	26,359	21,902	3,569	239	460	189	19,924	16,703	2,304	917
Caldwell	10,132	8,213	1,778	30	64	47	7,758	6,314	1,336	23	51	34	6,324	5,351	911	62
Catahoula	10,407	6,985	3,318	9	53	42	8,057	5,543	2,438	8	43	25	6,380	4,749	1,596	35
*Concordia	13,621	9,731	3,704	39	88	59	10,401	7,387	2,884	25	69	36	8,195	6,268	1,816	111
*East Baton Rouge	28,462	18,745	9,184	214	177	142	20,859	14,036	6,480	136	118	89	18,541	12,410	5,659	472
East Feliciana	20,267	10,783	9,250	67	127	40	16,075	8,775	7,123	58	94	25	13,411	7,629	5,126	656
Evangeline	33,984	23,439	9,862	139	161	383	24,817	17,619	6,661	97	117	323	21,407	15,267	5,973	167

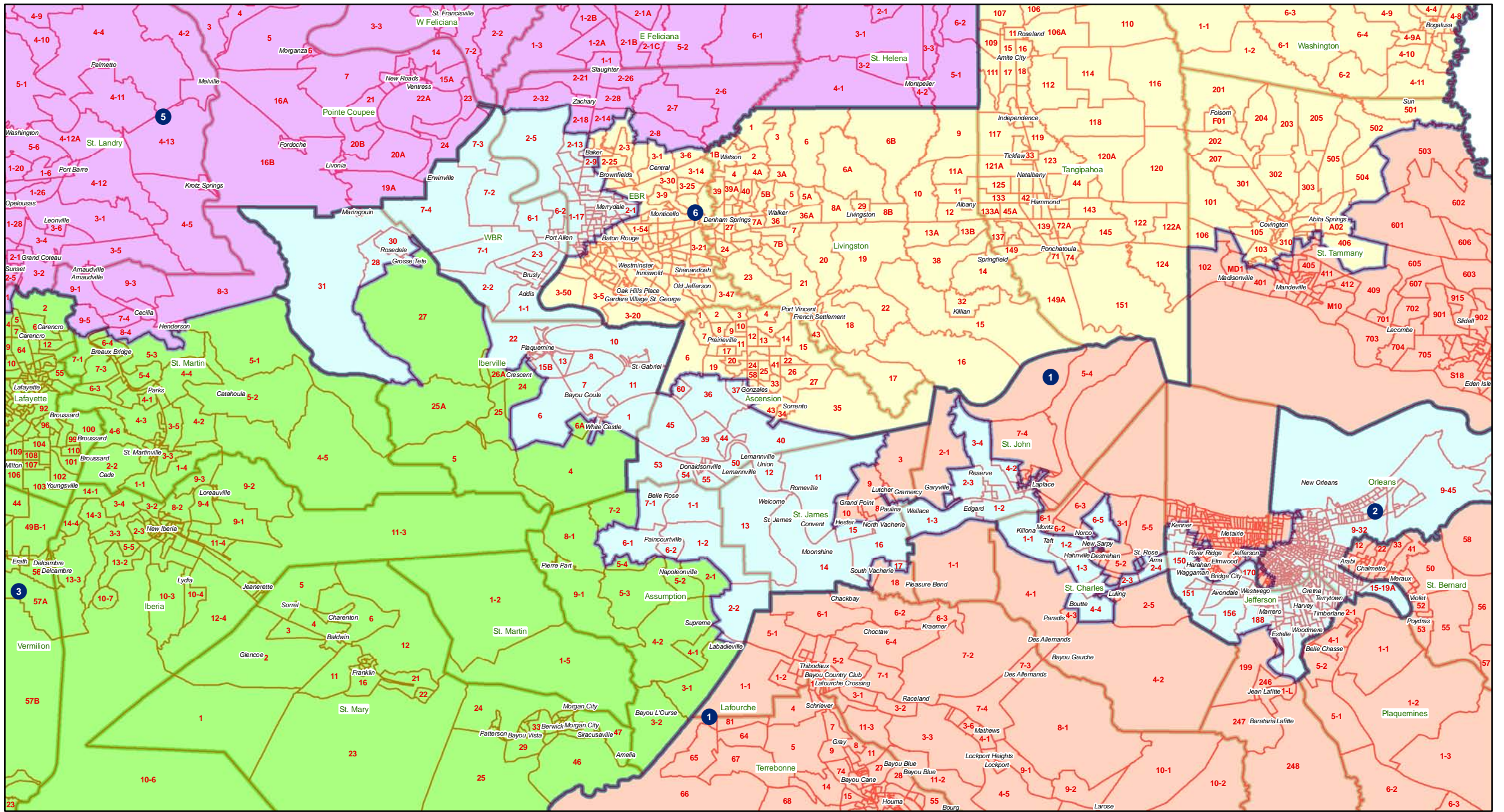
Splits

	Total Population	Total White	Total Black	Total Asian	Total American Indian	Total Other	VAP Total	VAP White	VAP Black	VAP Asian	VAP American Indian	VAP Other	Reg Total Jan 2011	Reg White Jan 2011	Reg Black Jan 2011	Reg Other Jan 2011
District 5																
Franklin	20,767	13,930	6,620	65	82	70	15,450	10,838	4,471	42	63	36	13,466	9,408	3,978	80
Grant	22,309	18,149	3,602	97	385	76	17,158	13,788	2,978	67	274	51	11,900	10,361	1,284	255
Jackson	16,274	11,084	4,947	67	83	93	12,570	8,681	3,724	39	65	61	9,846	6,879	2,805	162
La Salle	14,890	12,689	1,808	40	215	138	11,366	9,677	1,402	35	143	109	8,427	7,648	621	158
*Lafayette	2,886	2,167	632	16	27	44	2,098	1,639	397	11	20	31	1,724	1,340	311	73
*Ouachita	59,003	53,286	4,157	562	383	615	44,048	40,149	2,808	376	302	413	37,530	34,276	2,012	1,242
Pointe Coupee	22,802	14,010	8,427	69	71	225	17,327	11,073	6,020	44	57	133	15,464	9,584	5,696	184
Rapides	131,613	83,373	43,150	1,912	1,682	1,496	97,599	64,579	29,368	1,377	1,270	1,005	78,056	53,328	22,107	2,621
Richland	20,725	12,879	7,544	92	96	114	15,440	9,999	5,237	65	70	69	12,939	8,173	4,646	120
Sabine	24,233	17,155	4,234	84	2,636	124	18,311	13,544	2,835	63	1,796	73	13,837	10,811	2,032	994
St. Helena	11,203	5,034	6,014	16	72	67	8,440	4,036	4,291	11	60	42	8,432	3,816	4,517	99
St. Landry	83,384	46,615	35,153	395	406	815	60,704	35,593	23,997	266	278	570	56,549	31,901	23,591	1,057
*St. Martin	14,414	10,451	3,362	210	114	277	10,505	7,881	2,207	142	77	198	8,976	6,667	1,905	404
*Tangipahoa	6,895	3,452	3,347	22	28	46	4,932	2,643	2,233	16	18	22	4,290	2,244	1,960	86
*Tensas	492	327	155	2	4	4	397	269	120	2	4	2	384	256	127	1
Vernon	52,334	39,614	8,313	1,426	1,177	1,804	37,822	29,416	5,349	1,026	848	1,183	21,620	17,881	2,495	1,244
West Feliciana	15,625	8,125	7,317	42	35	106	12,907	6,412	6,364	24	33	74	6,796	4,448	2,254	94
Winn	15,313	10,223	4,777	53	167	93	11,871	8,018	3,619	44	129	61	8,892	6,410	2,406	76
District 5	755,526	516,403	214,739	6,415	10,375	7,594	564,931	395,949	151,986	4,516	7,385	5,095	449,525	320,872	116,319	12,334
	100.000%	68.350%	28.422%	0.849%	1.373%	1.005%	100.000%	70.088%	26.903%	0.799%	1.307%	0.902%	79.572%	71.380%	25.876%	2.744%
District 6																
*Ascension	83,934	70,015	10,387	1,092	505	1,935	59,576	50,519	6,785	704	353	1,215	49,880	42,625	5,041	2,214
*East Baton Rouge	315,800	189,468	105,147	13,045	1,505	6,635	246,089	157,845	72,011	10,091	1,191	4,951	176,507	121,714	46,337	8,456
Livingston	128,026	117,601	6,941	906	1,055	1,523	92,696	85,855	4,535	565	782	959	71,580	66,508	2,985	2,087
*St. Tammany	66,445	58,644	5,787	701	521	792	49,885	44,731	3,767	477	367	543	43,113	38,171	2,817	2,125
*Tangipahoa	114,202	76,754	34,034	933	806	1,675	85,745	60,488	22,826	694	613	1,124	64,374	46,335	16,029	2,010
Washington	47,168	31,482	14,884	145	305	352	35,305	24,363	10,374	101	238	229	25,608	17,973	7,239	396
District 6	755,575	543,964	177,180	16,822	4,697	12,912	569,296	423,801	120,298	12,632	3,544	9,021	431,062	333,326	80,448	17,288
	100.000%	71.993%	23.450%	2.226%	0.622%	1.709%	100.000%	74.443%	21.131%	2.219%	0.623%	1.585%	75.718%	77.327%	18.663%	4.011%

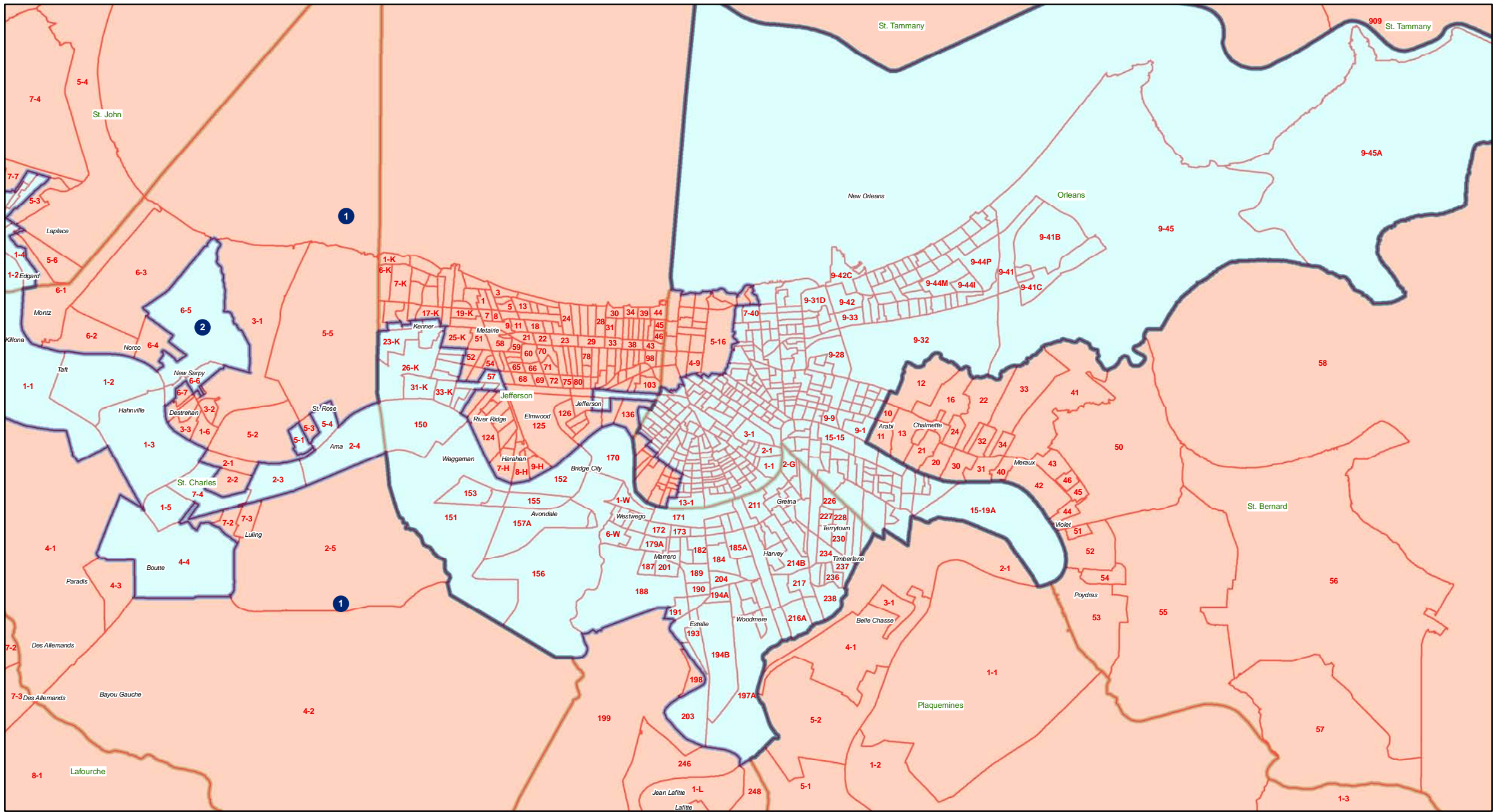
Congress - Statewide



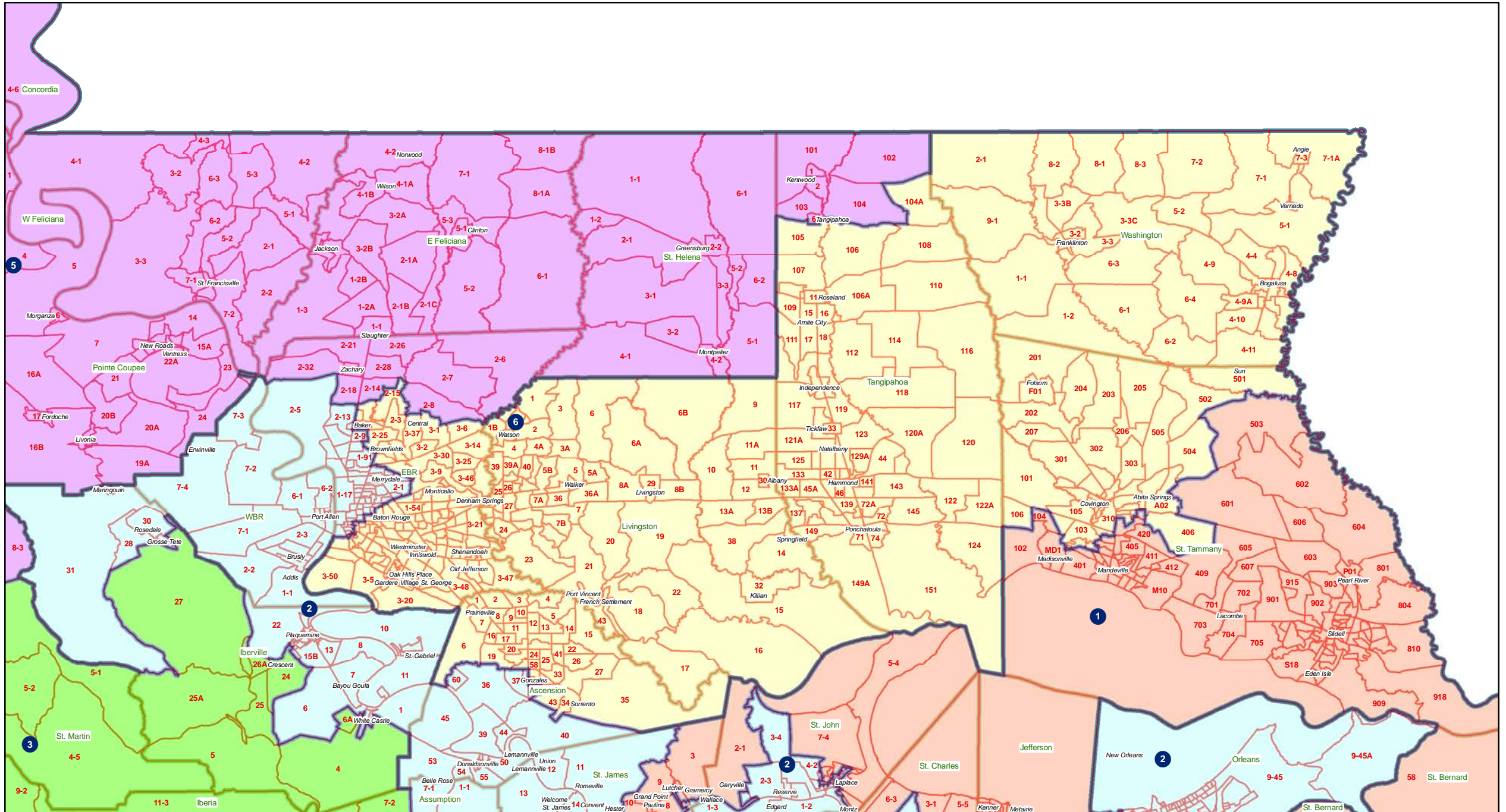
Congress - River area



Congress - Jefferson - Orleans



Congress - Florida Parishes



Congress - Northeast

