



1 118, 119, 120, 121, 122, 123, 124, 125, 126, 127, 128, 129, 130, 132, 134, 136, 138,  
 2 170, 1-H, 2-H, 3-H, 4-H, 5-H, 6-H, 7-H, 8-H, 9-H, 1-K, 2-K, 3-K, 4-K, 5-K, 6-K,  
 3 7-K, 8-K, 9-K, 10-K, 11-K, 12-K, 13-KA, 14-K, 15-K, 16-K, 17-K, 18-K, 19-K,  
 4 20-K, 25-K, 27-K, 28-K, 29-K, 30-K, 34-K and 35-K of Jefferson Parish;  
 5 Precincts 3-20, 4-7, 4-8, 4-9, 4-11, 4-14, 4-15, 4-17, 4-17A, 4-18, 4-20, 4-21, 4-22,  
 6 4-23, 5-13, 5-15, 5-16, 5-17, 5-18, 7-41, 7-42, 14-1, 14-2, 14-3, 14-4, 14-5, 14-6,  
 7 14-7, 14-8, 14-9, 14-10, 14-11, 14-12, 14-13A, 14-14, 14-15, 14-16, 14-17, 14-18A,  
 8 14-19, 14-20, 14-21, 16-1, 16-1A, 16-2, 17-1, 17-17, 17-18, 17-18A, 17-19 and  
 9 17-20 of Orleans Parish; St. Tammany Parish; Precincts 102, 104, 104A, 106,  
 10 106A, 106B, 108, 110, 112, 114 and 116 of Tangipahoa Parish and Washington  
 11 Parish.

12 (2) District 2 is composed of Precincts 57, 104, 107, 108, 115, 131, 133,  
 13 150, 151, 152, 153, 154, 155, 156, 157A, 157B, 171, 172, 173, 174, 179A, 179B,  
 14 180, 181, 185B, 187, 188, 191, 195, 196, 197A, 197B, 197C, 200, 201, 205, 210,  
 15 211, 212A, 212B, 213A, 213B, 213C, 214A, 214B, 215, 216A, 216B, 217, 225,  
 16 232A, 232B, 1-G, 2-G, 4-G, 6-G, 7-G, 13-KB, 21-K, 22-K, 23-K, 24-K, 26-K,  
 17 31-K, 33-K, 1-W, 2-W, 3-W, 4-W, 5-W, 6-W and 7-W of Jefferson Parish;  
 18 Precincts 1-1, 1-2, 1-5, 1-6, 2-1, 2-2, 2-3, 2-4, 2-6, 2-6A, 2-7, 3-1, 3-3, 3-5, 3-8, 3-9,  
 19 3-12, 3-14, 3-15, 3-18, 3-19, 4-2, 4-3, 4-4, 4-5, 4-6, 5-1, 5-2, 5-3, 5-4, 5-5, 5-7, 5-8,  
 20 5-9, 5-10, 5-11, 5-12, 6-1, 6-2, 6-4, 6-6, 6-7, 6-8, 6-9, 7-1, 7-2, 7-4, 7-5, 7-6, 7-7, 7-8,  
 21 7-9A, 7-10, 7-11, 7-12, 7-13, 7-14, 7-15, 7-16, 7-17, 7-18, 7-19, 7-20, 7-21, 7-23,  
 22 7-24, 7-25, 7-25A, 7-26, 7-27, 7-27B, 7-28, 7-28A, 7-29, 7-30, 7-32, 7-33, 7-34,  
 23 7-35, 7-37, 7-37A, 7-40, 8-1, 8-2, 8-4, 8-6, 8-7, 8-8, 8-9, 8-12, 8-13, 8-14, 8-15,  
 24 8-19, 8-20, 8-21, 8-22, 8-23, 8-24, 8-25, 8-26, 8-27, 8-28, 8-30, 9-1, 9-3, 9-3A, 9-4,  
 25 9-5, 9-5A, 9-6B, 9-6C, 9-6D, 9-6E, 9-6F, 9-7, 9-8, 9-8A, 9-9, 9-10, 9-11, 9-12, 9-13,  
 26 9-14, 9-15, 9-16, 9-17, 9-19, 9-21, 9-23, 9-25, 9-26, 9-28, 9-28C, 9-28E, 9-29, 9-30,  
 27 9-30A, 9-31, 9-31A, 9-31B, 9-31D, 9-32, 9-33, 9-34A, 9-35, 9-35A, 9-36, 9-36B,  
 28 9-37, 9-38, 9-38A, 9-39, 9-39B, 9-40, 9-40A, 9-40C, 9-41, 9-41A, 9-41B, 9-41C,  
 29 9-41D, 9-42, 9-42C, 9-43A, 9-43B, 9-43C, 9-43E, 9-43F, 9-43G, 9-43H, 9-43I,

1           9-43J, 9-43K, 9-43L, 9-43M, 9-43N, 9-44, 9-44A, 9-44B, 9-44D, 9-44E, 9-44F,  
 2           9-44G, 9-44I, 9-44J, 9-44L, 9-44M, 9-44N, 9-44O, 9-44P, 9-44Q, 9-45, 9-45A,  
 3           10-3, 10-6, 10-7, 10-8, 10-9, 10-11, 10-12, 10-13, 10-14, 11-2, 11-3, 11-4, 11-5,  
 4           11-8, 11-9, 11-10, 11-11, 11-12, 11-13, 11-14, 11-17, 12-1, 12-2, 12-3, 12-4, 12-5,  
 5           12-6, 12-7, 12-8, 12-9, 12-10, 12-11, 12-12, 12-13, 12-14, 12-16, 12-17, 12-19, 13-1,  
 6           13-2, 13-3, 13-4, 13-5, 13-6, 13-7, 13-8, 13-9, 13-10, 13-11, 13-12, 13-13, 13-14,  
 7           13-15, 13-16, 14-23, 14-24A, 14-25, 14-26, 15-1, 15-2, 15-3, 15-5, 15-6, 15-8, 15-9,  
 8           15-10, 15-11, 15-12, 15-12A, 15-13, 15-13A, 15-13B, 15-14, 15-14A, 15-14B,  
 9           15-14C, 15-14D, 15-14E, 15-14F, 15-14G, 15-15, 15-15A, 15-15B, 15-16, 15-17,  
 10          15-17A, 15-17B, 15-18, 15-18A, 15-18B, 15-18C, 15-18D, 15-18E, 15-18F, 15-19,  
 11          15-19A, 15-19B, 15-19C, 16-3, 16-4, 16-5, 16-6, 16-7, 16-8, 16-9, 17-2, 17-3, 17-4,  
 12          17-5, 17-6, 17-7, 17-8, 17-9, 17-10, 17-11, 17-12, 17-13, 17-13A, 17-14, 17-15 and  
 13          17-16 of Orleans Parish; St. Charles Parish; St. James Parish and St. John the  
 14          Baptist Parish.

15           (3) District 3 is composed of Precincts 3-1, 3-2, 8-1 and 9-1 of  
 16          Assumption Parish; Iberia Parish; Precincts 175, 176, 177, 178, 182, 183, 184,  
 17          185A, 189, 190, 192, 193, 194A, 194B, 198, 199, 202, 203, 204, 226, 227, 228, 229,  
 18          230, 231, 234, 235, 236, 237, 238, 246, 247, 248, 3-G, 5-G, 8-G, 9-G, 10-G, 11-G,  
 19          12-G, 13-G, 1-GI and 1-L of Jefferson Parish; Precincts 97B, 98, 99, 100, 101,  
 20          102, 103, 104, 107, 108, 110 and 111 of Lafayette Parish; Lafourche Parish;  
 21          Plaquemines Parish; St. Bernard Parish; St. Martin Parish; St. Mary Parish  
 22          and Terrebonne Parish.

23           (4) District 4 is composed of Bienville Parish; Bossier Parish; Caddo  
 24          Parish; De Soto Parish; Natchitoches Parish; Red River Parish; Sabine Parish;  
 25          Vernon Parish and Webster Parish.

26           (5) District 5 is composed of Caldwell Parish; Catahoula Parish;  
 27          Claiborne Parish; Concordia Parish; East Carroll Parish; Franklin Parish;  
 28          Grant Parish; Jackson Parish; La Salle Parish; Lincoln Parish; Madison  
 29          Parish; Morehouse Parish; Ouachita Parish; Precincts C1, C8, C9, C10, C11,

1 C13, C14, C15, C17, C18, C19, C20, C21, C22, C23, C24, C25, C26, C27, C28,  
 2 C30, C31, C32, C33, C34, C35, C36, C37, C38, C39, C40, C41, C42, N1, N2, N5,  
 3 N6, N7, N8, N11, N12, N13, N14, N15, N16, N17, N18, N19, N20, N21, N22, N23,  
 4 N24, N25, N26, N27, S1, S2, S4, S5, S6, S7, S8, S9, S10, S11, S13, S14, S21, S22,  
 5 S23, S24, S25, S26, S27, S28 and S29 of Rapides Parish; Richland Parish;  
 6 Tensas Parish; Union Parish; West Carroll Parish and Winn Parish.

7 (6) District 6 is composed of Precincts 1, 2, 3, 4, 5, 6, 7, 8, 9, 10, 11, 12,  
 8 13, 14, 15, 16, 17, 18, 19, 20, 21, 22, 23, 24, 25, 26, 27, 28, 30, 31, 32, 33, 34, 35, 40,  
 9 41, 43, 58, 60 and 61 of Ascension Parish; Precincts 1-7, 1-8, 1-9, 1-12, 1-33,  
 10 1-34, 1-35, 1-39, 1-40, 1-41, 1-42, 1-43, 1-44, 1-46, 1-47, 1-48, 1-49, 1-52, 1-53,  
 11 1-55, 1-56, 1-57, 1-59, 1-60, 1-64, 1-65, 1-66, 1-69, 1-71, 1-72, 1-73, 1-74, 1-75,  
 12 1-80, 1-81, 1-87, 1-89, 1-90, 1-98, 1-99, 1-102, 1-103, 1-105, 1-107, 2-6, 2-7, 2-8,  
 13 2-18, 2-21, 2-26, 2-28, 2-29, 3-1, 3-2, 3-3, 3-4, 3-6, 3-7, 3-9, 3-10, 3-11, 3-12, 3-13,  
 14 3-14, 3-15, 3-16, 3-17, 3-18, 3-19, 3-20, 3-21, 3-22, 3-23, 3-25, 3-26, 3-27, 3-28,  
 15 3-29, 3-30, 3-31, 3-32, 3-33, 3-34, 3-35, 3-36, 3-37, 3-38, 3-39, 3-40, 3-41, 3-43,  
 16 3-45, 3-46, 3-47, 3-48, 3-49, 3-51, 3-52, 3-53 and 3-55 of East Baton Rouge  
 17 Parish; Livingston Parish and Precincts 27, 28, 28A, 33, 40, 40A, 41, 42, 42A, 43,  
 18 44, 45, 45A, 46, 47, 48, 49, 70, 70A, 71, 72, 72A, 73, 74, 117, 118, 119, 120, 120A,  
 19 120B, 121, 121A, 121B, 122, 122A, 123, 124, 125, 127, 127A, 129, 129A, 133,  
 20 133A, 137, 137A, 137B, 137C, 137D, 139, 141, 141A, 143, 145, 149, 149A and 151  
 21 of Tangipahoa Parish.

22 (7) District 7 is composed of Acadia Parish; Allen Parish; Beauregard  
 23 Parish; Calcasieu Parish; Cameron Parish; Evangeline Parish; Jefferson Davis  
 24 Parish; Precincts 1, 3, 4, 8, 9, 25, 26, 27, 28A, 28B, 29, 30A, 31, 32, 33, 34, 35, 36,  
 25 37, 38, 39, 40, 41, 42, 43, 44, 45, 46, 47, 48, 49, 65, 66, 67, 69, 70, 71, 72, 73, 74, 75,  
 26 76, 77, 78, 79, 80, 81, 82, 83, 84, 85, 86, 87, 88, 89, 90, 91, 92, 93, 94, 95, 96, 97A,  
 27 105, 106 and 109 of Lafayette Parish and Vermilion Parish.

28 (8) District 8 is composed of Precincts 36, 37, 39, 42, 44, 45, 47, 48, 49,  
 29 50, 51, 52, 53, 54, 55, 56 and 57 of Ascension Parish; Precincts 1-1, 1-2, 2-1, 2-2,

1           **2-3, 4-1, 4-2, 5-1, 5-2, 5-3, 5-4, 6-1, 6-2, 7-1 and 7-2 of Assumption Parish;**  
2           **Avoyelles Parish; Precincts 1-1, 1-2, 1-3, 1-4, 1-5, 1-6, 1-10, 1-13, 1-14, 1-15,**  
3           **1-16, 1-17, 1-18, 1-19, 1-21, 1-22, 1-23, 1-24, 1-25, 1-26, 1-27, 1-28, 1-29, 1-30,**  
4           **1-31, 1-32, 1-36, 1-37, 1-38, 1-45, 1-50, 1-51, 1-54, 1-58, 1-61, 1-62, 1-63, 1-67,**  
5           **1-68, 1-70, 1-77, 1-78, 1-82, 1-83, 1-84, 1-85, 1-86, 1-88, 1-91, 1-92, 1-93, 1-94,**  
6           **1-95, 1-97, 1-100, 1-101, 1-104, 2-1, 2-2, 2-3, 2-4, 2-5, 2-9, 2-10, 2-11, 2-12, 2-13,**  
7           **2-14, 2-15, 2-16, 2-17, 2-19, 2-20, 2-22, 2-23, 2-24, 2-25, 2-27, 2-30, 2-31, 2-32, 3-5,**  
8           **3-8, 3-24, 3-42, 3-44, 3-50 and 3-54 of East Baton Rouge Parish; East Feliciana**  
9           **Parish; Iberville Parish; Precincts 2, 5, 6, 7, 10, 11, 12, 13, 14, 15, 16, 17, 18, 19,**  
10           **20, 21, 22, 23, 24, 50, 51, 52, 53, 54, 55, 56, 57, 58, 59, 60, 61, 62, 63, 64 and 68 of**  
11           **Lafayette Parish; Pointe Coupee Parish; Precincts C2, C3, C4, C5, C6, C7, N3,**  
12           **N4, N9, N10, N28, N29, S15, S16, S17, S18, S19 and S20 of Rapides Parish; St.**  
13           **Helena Parish; St. Landry Parish; Precincts 1, 2, 6, 11, 15, 16, 17, 18, 26, 27A,**  
14           **101, 103, 105, 107, 109, 109A, 111, 111A and 115B of Tangipahoa Parish; West**  
15           **Baton Rouge Parish and West Feliciana Parish.**

16           Section 2. (A) The precincts referenced in this Act are those precincts identified as  
17           Voting Districts (VTDs) in the 2010 Census Redistricting TIGER/Line Shapefiles for the  
18           State of Louisiana.

19           (B) When a precinct referenced in this Act has been subdivided by action of the  
20           parish governing authority on a nongeographic basis or subdivided by action of the parish  
21           governing authority on a geographic basis in accordance with the provisions of R.S.18:532.1,  
22           the enumeration in this Act of the general precinct designation shall include all  
23           nongeographic and all geographic subdivisions thereof, however such subdivisions may be  
24           designated. The territorial limits of the districts as provided in this Act shall continue in  
25           effect without change regardless of any changes made to the precincts by the parish  
26           governing authority.

27           Section 3. R.S. 17:2.2 is hereby repealed in its entirety.

28           Section 4.(A) Section 1 of this Act shall become effective solely for the purposes of  
29           qualifying and election of members of the State Board of Elementary and Secondary

1 Education at the regularly scheduled elections in 2011, upon signature of this Act by the  
2 governor or, if not signed by the governor, upon expiration of the time for bills to become  
3 law without signature by the governor, as provided in Article III, Section 18 of the  
4 Constitution of Louisiana. If this Act is vetoed by the governor and subsequently approved  
5 by the legislature, Section 1 of this Act shall become effective for such purposes on the day  
6 following such approval. The provisions of Section 1 of this Act shall be effective for all  
7 other purposes at noon on January 9, 2012.

8 (B) Section 3 of this Act shall become effective at noon on January 9, 2012.

9 (C) The provisions of this Section and Section 2 of this Act shall become effective  
10 upon signature of this Act by the governor or, if not signed by the governor, upon expiration  
11 of the time for bills to become law without signature by the governor, as provided in Article  
12 III, Section 18 of the Constitution of Louisiana. If this Act is vetoed by the governor and  
13 subsequently approved by the legislature, the provisions of this Section and Section 2 of this  
14 Act shall become effective on the day following such approval.

---

The original instrument and the following digest, which constitutes no part  
of the legislative instrument, were prepared by Yolanda J. Dixon.

---

#### DIGEST

Present constitution provides that BESE is composed of 11 members, eight elected from single-member districts and three appointed by the governor from the state at large.

Present law divides the state into eight districts for election of BESE members.

Proposed law redraws district boundaries for the eight BESE districts. Provides that for purposes of qualifying and election in 2011, proposed districts become effective upon signature of governor or lapse of time for gubernatorial action. For all other purposes, present districts remain in effect until noon, Jan. 9, 2012, when proposed districts become effective for all other purposes.

(Adds R.S. 17:2.1; repeals R.S. 17:2.2)

# Plan Statistics

| <u>Districts:</u> | <u># of Members</u> | <u>Actual Population</u> | <u>Ideal Population</u> | <u>Absolute Deviation</u> | <u>Relative Deviation</u> |
|-------------------|---------------------|--------------------------|-------------------------|---------------------------|---------------------------|
| District 1        | 1                   | 567,095                  | 566,671                 | 424                       | 0.075%                    |
| District 2        | 1                   | 542,420                  | 566,671                 | -24,251                   | -4.280%                   |
| District 3        | 1                   | 565,289                  | 566,671                 | -1,382                    | -0.244%                   |
| District 4        | 1                   | 579,388                  | 566,671                 | 12,717                    | 2.244%                    |
| District 5        | 1                   | 565,448                  | 566,671                 | -1,223                    | -0.216%                   |
| District 6        | 1                   | 565,311                  | 566,671                 | -1,360                    | -0.240%                   |
| District 7        | 1                   | 587,153                  | 566,671                 | 20,482                    | 3.614%                    |
| District 8        | 1                   | 561,268                  | 566,671                 | -5,403                    | -0.953%                   |

---

**Grand Total:**                      8                      4,533,372                      4,533,368

---

Ideal Population Per Member:                      566671  
 Number of Districts for Plan Type:                      8

Range of District Populations:                      542,420    to                      587,153

Absolute Mean Deviation:                      5,592  
 Absolute Range:                      -24,251    to                      20,482  
 Absolute Overall Range:                      44,733

Relative Mean Deviation:                      1.48%  
 Relative Range:                      -4.28%    to                      3.61%  
 Relative Overall Range:                      7.89%

|                                      |                  |
|--------------------------------------|------------------|
| <b><i>Ideal - Actual:</i></b>        | <b><i>-4</i></b> |
| <b><i>Remainder:</i></b>             | <b><i>4</i></b>  |
| <b><i>Unassigned Population:</i></b> | <b><i>0</i></b>  |

# Total Population

|             | Total<br>Population | Total<br>White | Total<br>Black | Total<br>Asian | Total<br>American<br>Indian | Total<br>Other | Total<br>Hispanic | Reg Total<br>Jan 2011 |
|-------------|---------------------|----------------|----------------|----------------|-----------------------------|----------------|-------------------|-----------------------|
| District 1  | 567,095             | 457,320        | 74,550         | 14,170         | 4,291                       | 16,764         | 47,020            | 341,842               |
|             | 100.000%            | 80.643%        | 13.146%        | 2.499%         | 0.757%                      | 2.956%         | 8.291%            | 77.789%               |
| District 2  | 542,420             | 178,350        | 330,261        | 16,475         | 3,020                       | 14,314         | 32,598            | 325,481               |
|             | 100.000%            | 32.880%        | 60.887%        | 3.037%         | 0.557%                      | 2.639%         | 6.010%            | 79.152%               |
| District 3  | 565,289             | 395,804        | 128,174        | 11,779         | 15,349                      | 14,183         | 29,181            | 331,495               |
|             | 100.000%            | 70.018%        | 22.674%        | 2.084%         | 2.715%                      | 2.509%         | 5.162%            | 78.924%               |
| District 4  | 579,388             | 342,855        | 211,590        | 7,747          | 8,329                       | 8,867          | 20,124            | 326,193               |
|             | 100.000%            | 59.175%        | 36.520%        | 1.337%         | 1.438%                      | 1.530%         | 3.473%            | 75.047%               |
| District 5  | 565,448             | 354,779        | 196,162        | 5,230          | 4,199                       | 5,078          | 11,927            | 340,390               |
|             | 100.000%            | 62.743%        | 34.691%        | 0.925%         | 0.743%                      | 0.898%         | 2.109%            | 79.798%               |
| District 6  | 565,311             | 437,441        | 101,221        | 13,812         | 3,509                       | 9,328          | 22,205            | 327,778               |
|             | 100.000%            | 77.381%        | 17.905%        | 2.443%         | 0.621%                      | 1.650%         | 3.928%            | 76.598%               |
| District 7  | 587,153             | 446,050        | 120,477        | 8,076          | 5,051                       | 7,499          | 16,571            | 350,254               |
|             | 100.000%            | 75.968%        | 20.519%        | 1.375%         | 0.860%                      | 1.277%         | 2.822%            | 79.843%               |
| District 8  | 561,268             | 223,593        | 324,450        | 4,262          | 2,805                       | 6,158          | 12,934            | 336,942               |
|             | 100.000%            | 39.837%        | 57.807%        | 0.759%         | 0.500%                      | 1.097%         | 2.304%            | 80.828%               |
| Grand Total | 4,533,372           | 2,836,192      | 1,486,885      | 81,551         | 46,553                      | 82,191         | 192,560           | 2,680,375             |
|             | 100.000%            | 62.563%        | 32.799%        | 1.799%         | 1.027%                      | 1.813%         | 4.248%            | 78.480%               |



# Voter Registration

|                    | Reg Total<br>Jan 2011 | Reg White<br>Jan 2011 | Reg Black<br>Jan 2011 | Reg Other<br>Jan 2011 | Reg Dem<br>Total<br>Jan 2011 | Reg Rep<br>Total<br>Jan 2011 | Reg Other<br>Total<br>Jan 2011 |
|--------------------|-----------------------|-----------------------|-----------------------|-----------------------|------------------------------|------------------------------|--------------------------------|
| District 1         | 341,842               | 285,506               | 32,668                | 23,668                | 118,608                      | 138,313                      | 84,921                         |
|                    | 77.789%               | 83.520%               | 9.556%                | 6.924%                | 34.697%                      | 40.461%                      | 24.842%                        |
| District 2         | 325,481               | 109,446               | 194,512               | 21,523                | 215,019                      | 39,081                       | 71,381                         |
|                    | 79.152%               | 33.626%               | 59.761%               | 6.613%                | 66.062%                      | 12.007%                      | 21.931%                        |
| District 3         | 331,495               | 247,120               | 67,978                | 16,397                | 164,778                      | 85,903                       | 80,814                         |
|                    | 78.924%               | 74.547%               | 20.506%               | 4.946%                | 49.708%                      | 25.914%                      | 24.379%                        |
| District 4         | 326,193               | 202,155               | 111,673               | 12,365                | 160,682                      | 94,355                       | 71,156                         |
|                    | 75.047%               | 61.974%               | 34.235%               | 3.791%                | 49.260%                      | 28.926%                      | 21.814%                        |
| District 5         | 340,390               | 226,744               | 104,871               | 8,775                 | 170,286                      | 97,999                       | 72,105                         |
|                    | 79.798%               | 66.613%               | 30.809%               | 2.578%                | 50.027%                      | 28.790%                      | 21.183%                        |
| District 6         | 327,778               | 269,272               | 45,257                | 13,249                | 124,829                      | 121,471                      | 81,478                         |
|                    | 76.598%               | 82.151%               | 13.807%               | 4.042%                | 38.083%                      | 37.059%                      | 24.858%                        |
| District 7         | 350,254               | 277,266               | 62,270                | 10,718                | 174,180                      | 92,753                       | 83,321                         |
|                    | 79.843%               | 79.161%               | 17.779%               | 3.060%                | 49.730%                      | 26.482%                      | 23.789%                        |
| District 8         | 336,942               | 143,608               | 184,848               | 8,486                 | 226,604                      | 48,315                       | 62,023                         |
|                    | 80.828%               | 42.621%               | 54.860%               | 2.519%                | 67.253%                      | 14.339%                      | 18.408%                        |
| <b>Grand Total</b> | <b>2,680,375</b>      | <b>1,761,117</b>      | <b>804,077</b>        | <b>115,181</b>        | <b>1,354,986</b>             | <b>718,190</b>               | <b>607,199</b>                 |

# Splits

|                      | Total Population | Total White    | Total Black    | Total Asian   | Total American Indian | Total Other   | VAP Total      | VAP White      | VAP Black      | VAP Asian     | VAP American Indian | VAP Other     | Reg Total Jan 2011 | Reg White Jan 2011 | Reg Black Jan 2011 | Reg Other Jan 2011 |
|----------------------|------------------|----------------|----------------|---------------|-----------------------|---------------|----------------|----------------|----------------|---------------|---------------------|---------------|--------------------|--------------------|--------------------|--------------------|
| <b>District 1</b>    |                  |                |                |               |                       |               |                |                |                |               |                     |               |                    |                    |                    |                    |
| *Jefferson           | 227,154          | 180,142        | 25,276         | 8,734         | 1,413                 | 11,589        | 182,446        | 147,755        | 18,070         | 6,712         | 1,082               | 8,827         | 134,713            | 113,612            | 9,040              | 12,061             |
| *Orleans             | 45,606           | 39,675         | 3,502          | 1,453         | 238                   | 738           | 38,208         | 33,451         | 2,769          | 1,215         | 182                 | 591           | 30,033             | 25,632             | 1,647              | 2,754              |
| St. Tammany          | 233,740          | 195,364        | 28,449         | 3,807         | 2,182                 | 3,938         | 173,604        | 147,964        | 18,752         | 2,570         | 1,579               | 2,739         | 143,614            | 121,851            | 13,495             | 8,268              |
| *Tangipahoa          | 13,427           | 10,657         | 2,439          | 31            | 153                   | 147           | 9,885          | 8,010          | 1,656          | 22            | 108                 | 89            | 7,874              | 6,438              | 1,247              | 189                |
| Washington           | 47,168           | 31,482         | 14,884         | 145           | 305                   | 352           | 35,305         | 24,363         | 10,374         | 101           | 238                 | 229           | 25,608             | 17,973             | 7,239              | 396                |
| <b>District 1</b>    | <b>567,095</b>   | <b>457,320</b> | <b>74,550</b>  | <b>14,170</b> | <b>4,291</b>          | <b>16,764</b> | <b>439,448</b> | <b>361,543</b> | <b>51,621</b>  | <b>10,620</b> | <b>3,189</b>        | <b>12,475</b> | <b>341,842</b>     | <b>285,506</b>     | <b>32,668</b>      | <b>23,668</b>      |
|                      | 100.000%         | 80.643%        | 13.146%        | 2.499%        | 0.757%                | 2.956%        | 100.000%       | 82.272%        | 11.747%        | 2.417%        | 0.726%              | 2.839%        | 77.789%            | 83.520%            | 9.556%             | 6.924%             |
| <b>District 2</b>    |                  |                |                |               |                       |               |                |                |                |               |                     |               |                    |                    |                    |                    |
| *Jefferson           | 123,391          | 37,941         | 72,687         | 5,945         | 902                   | 5,916         | 90,265         | 30,597         | 50,236         | 4,435         | 629                 | 4,368         | 69,549             | 22,014             | 41,532             | 6,003              |
| *Orleans             | 298,223          | 73,753         | 206,945        | 9,498         | 1,458                 | 6,569         | 232,406        | 66,229         | 151,925        | 7,625         | 1,217               | 5,410         | 181,739            | 44,804             | 124,001            | 12,934             |
| St. Charles          | 52,780           | 36,540         | 14,395         | 575           | 371                   | 899           | 38,572         | 27,445         | 9,868          | 357           | 263                 | 639           | 31,705             | 22,913             | 7,454              | 1,338              |
| St. James            | 22,102           | 10,615         | 11,290         | 43            | 52                    | 102           | 16,401         | 8,231          | 8,039          | 26            | 41                  | 64            | 14,703             | 7,249              | 7,260              | 194                |
| St. John the Baptist | 45,924           | 19,501         | 24,944         | 414           | 237                   | 828           | 33,568         | 15,408         | 17,127         | 290           | 164                 | 579           | 27,785             | 12,466             | 14,265             | 1,054              |
| <b>District 2</b>    | <b>542,420</b>   | <b>178,350</b> | <b>330,261</b> | <b>16,475</b> | <b>3,020</b>          | <b>14,314</b> | <b>411,212</b> | <b>147,910</b> | <b>237,195</b> | <b>12,733</b> | <b>2,314</b>        | <b>11,060</b> | <b>325,481</b>     | <b>109,446</b>     | <b>194,512</b>     | <b>21,523</b>      |
|                      | 100.000%         | 32.880%        | 60.887%        | 3.037%        | 0.557%                | 2.639%        | 100.000%       | 35.969%        | 57.682%        | 3.096%        | 0.563%              | 2.690%        | 79.152%            | 33.626%            | 59.761%            | 6.613%             |
| <b>District 3</b>    |                  |                |                |               |                       |               |                |                |                |               |                     |               |                    |                    |                    |                    |
| *Assumption          | 8,727            | 8,264          | 180            | 45            | 112                   | 126           | 6,632          | 6,337          | 103            | 35            | 77                  | 80            | 5,228              | 5,132              | 28                 | 68                 |
| Iberia               | 73,240           | 45,551         | 24,091         | 1,926         | 428                   | 1,244         | 53,398         | 35,137         | 15,754         | 1,308         | 307                 | 892           | 45,139             | 30,016             | 13,917             | 1,206              |
| *Jefferson           | 82,007           | 54,032         | 19,036         | 3,964         | 1,087                 | 3,888         | 62,444         | 42,921         | 12,996         | 2,963         | 778                 | 2,786         | 47,815             | 33,501             | 9,561              | 4,753              |
| *Lafayette           | 27,388           | 23,377         | 3,089          | 403           | 193                   | 326           | 19,586         | 16,947         | 2,009          | 274           | 130                 | 226           | 16,717             | 14,496             | 1,571              | 650                |
| Lafourche            | 96,318           | 76,445         | 13,363         | 855           | 3,457                 | 2,198         | 72,652         | 59,362         | 8,945          | 612           | 2,187               | 1,546         | 53,711             | 45,827             | 6,316              | 1,568              |
| Plaquemines          | 23,042           | 16,246         | 4,951          | 844           | 556                   | 445           | 16,713         | 12,086         | 3,367          | 583           | 396                 | 281           | 14,534             | 10,541             | 3,075              | 918                |
| St. Bernard          | 35,897           | 26,579         | 6,705          | 873           | 522                   | 1,218         | 26,720         | 20,490         | 4,338          | 640           | 370                 | 882           | 23,358             | 19,332             | 2,829              | 1,197              |
| St. Martin           | 52,160           | 34,313         | 16,397         | 478           | 350                   | 622           | 38,389         | 26,320         | 11,090         | 316           | 227                 | 436           | 33,849             | 22,866             | 9,886              | 1,097              |
| St. Mary             | 54,650           | 32,406         | 18,290         | 1,058         | 1,269                 | 1,627         | 40,746         | 25,191         | 12,797         | 773           | 837                 | 1,148         | 31,845             | 20,072             | 10,527             | 1,246              |
| Terrebonne           | 111,860          | 78,591         | 22,072         | 1,333         | 7,375                 | 2,489         | 82,737         | 60,621         | 14,647         | 986           | 4,725               | 1,758         | 59,299             | 45,337             | 10,268             | 3,694              |
| <b>District 3</b>    | <b>565,289</b>   | <b>395,804</b> | <b>128,174</b> | <b>11,779</b> | <b>15,349</b>         | <b>14,183</b> | <b>420,017</b> | <b>305,412</b> | <b>86,046</b>  | <b>8,490</b>  | <b>10,034</b>       | <b>10,035</b> | <b>331,495</b>     | <b>247,120</b>     | <b>67,978</b>      | <b>16,397</b>      |
|                      | 100.000%         | 70.018%        | 22.674%        | 2.084%        | 2.715%                | 2.509%        | 100.000%       | 72.714%        | 20.486%        | 2.021%        | 2.389%              | 2.389%        | 78.924%            | 74.547%            | 20.506%            | 4.946%             |
| <b>District 4</b>    |                  |                |                |               |                       |               |                |                |                |               |                     |               |                    |                    |                    |                    |
| Bienville            | 14,353           | 7,935          | 6,153          | 44            | 132                   | 89            | 11,012         | 6,279          | 4,544          | 31            | 105                 | 53            | 9,256              | 5,112              | 4,085              | 59                 |
| Bossier              | 116,979          | 84,430         | 25,606         | 2,516         | 1,139                 | 3,288         | 86,945         | 64,692         | 17,413         | 1,836         | 837                 | 2,167         | 60,834             | 46,663             | 11,491             | 2,680              |
| Caddo                | 254,969          | 124,942        | 122,229        | 3,230         | 1,906                 | 2,662         | 192,315        | 100,748        | 85,902         | 2,363         | 1,455               | 1,847         | 151,374            | 79,163             | 66,708             | 5,503              |
| De Soto              | 26,656           | 15,456         | 10,600         | 54            | 331                   | 215           | 20,006         | 12,055         | 7,495          | 42            | 273                 | 141           | 16,396             | 9,663              | 6,191              | 542                |
| Natchitoches         | 39,566           | 21,494         | 16,778         | 197           | 649                   | 448           | 29,966         | 17,226         | 11,771         | 151           | 477                 | 341           | 22,982             | 13,181             | 8,878              | 923                |
| Red River            | 9,091            | 5,360          | 3,633          | 16            | 43                    | 39            | 6,778          | 4,256          | 2,450          | 12            | 34                  | 26            | 5,981              | 3,566              | 2,377              | 38                 |

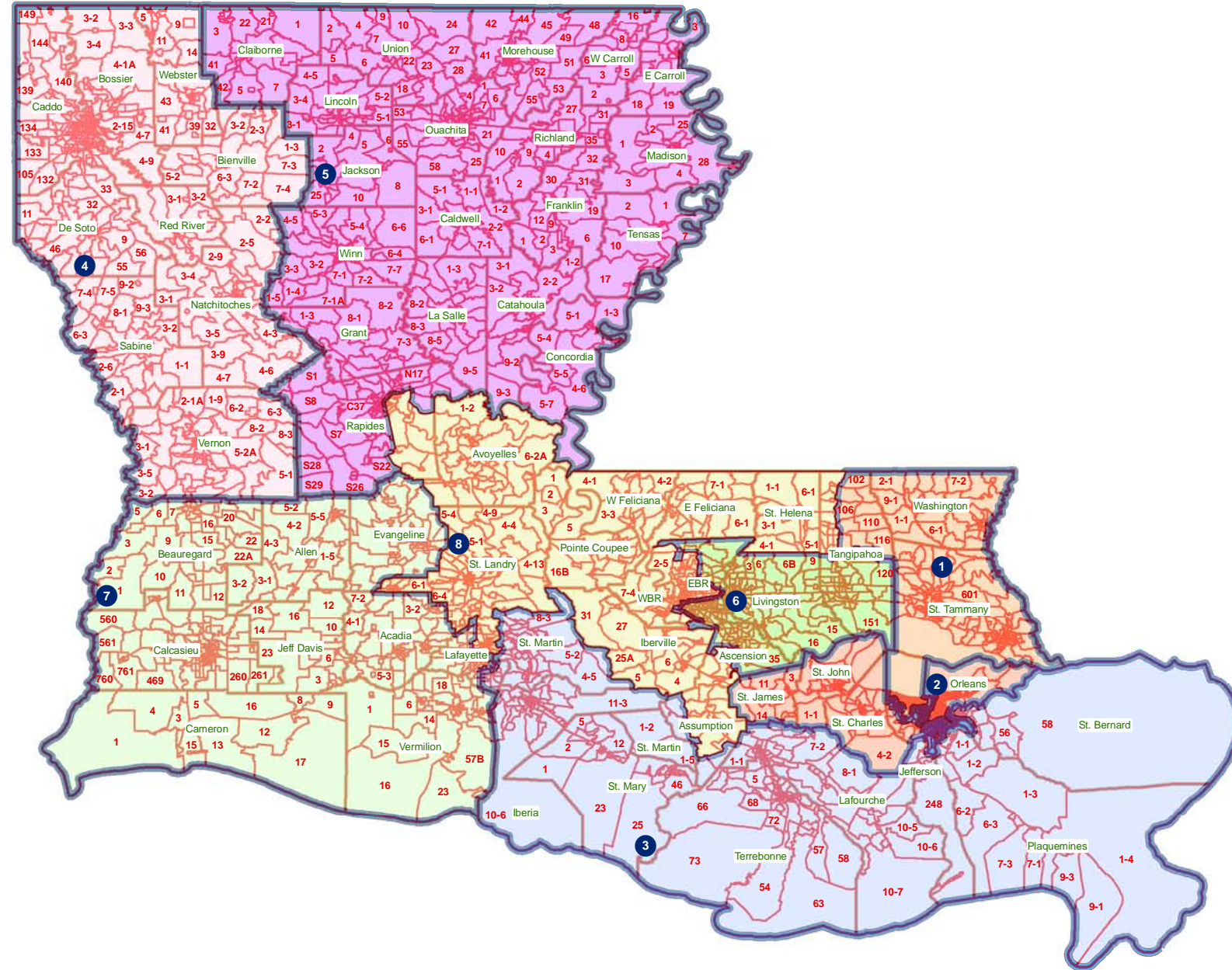
## Splits

|                   | Total<br>Population | Total<br>White | Total<br>Black | Total<br>Asian | Total<br>American<br>Indian | Total<br>Other | VAP Total | VAP White | VAP Black | VAP Asian | VAP<br>American<br>Indian | VAP Other | Reg Total<br>Jan 2011 | Reg White<br>Jan 2011 | Reg Black<br>Jan 2011 | Reg Other<br>Jan 2011 |
|-------------------|---------------------|----------------|----------------|----------------|-----------------------------|----------------|-----------|-----------|-----------|-----------|---------------------------|-----------|-----------------------|-----------------------|-----------------------|-----------------------|
| District 4        |                     |                |                |                |                             |                |           |           |           |           |                           |           |                       |                       |                       |                       |
| Sabine            | 24,233              | 17,155         | 4,234          | 84             | 2,636                       | 124            | 18,311    | 13,544    | 2,835     | 63        | 1,796                     | 73        | 13,837                | 10,811                | 2,032                 | 994                   |
| Vernon            | 52,334              | 39,614         | 8,313          | 1,426          | 1,177                       | 1,804          | 37,822    | 29,416    | 5,349     | 1,026     | 848                       | 1,183     | 21,620                | 17,881                | 2,495                 | 1,244                 |
| Webster           | 41,207              | 26,469         | 14,044         | 180            | 316                         | 198            | 31,497    | 20,907    | 10,110    | 120       | 241                       | 119       | 23,913                | 16,115                | 7,416                 | 382                   |
| District 4        | 579,388             | 342,855        | 211,590        | 7,747          | 8,329                       | 8,867          | 434,652   | 269,123   | 147,869   | 5,644     | 6,066                     | 5,950     | 326,193               | 202,155               | 111,673               | 12,365                |
|                   | 100.000%            | 59.175%        | 36.520%        | 1.337%         | 1.438%                      | 1.530%         | 100.000%  | 61.917%   | 34.020%   | 1.299%    | 1.396%                    | 1.369%    | 75.047%               | 61.974%               | 34.235%               | 3.791%                |
| District 5        |                     |                |                |                |                             |                |           |           |           |           |                           |           |                       |                       |                       |                       |
| Caldwell          | 10,132              | 8,213          | 1,778          | 30             | 64                          | 47             | 7,758     | 6,314     | 1,336     | 23        | 51                        | 34        | 6,324                 | 5,351                 | 911                   | 62                    |
| Catahoula         | 10,407              | 6,985          | 3,318          | 9              | 53                          | 42             | 8,057     | 5,543     | 2,438     | 8         | 43                        | 25        | 6,380                 | 4,749                 | 1,596                 | 35                    |
| Claiborne         | 17,195              | 8,167          | 8,820          | 62             | 99                          | 47             | 13,815    | 6,781     | 6,889     | 37        | 80                        | 28        | 8,877                 | 4,908                 | 3,872                 | 97                    |
| Concordia         | 20,822              | 11,959         | 8,604          | 59             | 123                         | 77             | 15,589    | 9,298     | 6,117     | 41        | 88                        | 45        | 12,696                | 7,997                 | 4,529                 | 170                   |
| East Carroll      | 7,759               | 2,245          | 5,398          | 47             | 31                          | 38             | 5,766     | 1,845     | 3,830     | 37        | 25                        | 29        | 5,330                 | 1,617                 | 3,664                 | 49                    |
| Franklin          | 20,767              | 13,930         | 6,620          | 65             | 82                          | 70             | 15,450    | 10,838    | 4,471     | 42        | 63                        | 36        | 13,466                | 9,408                 | 3,978                 | 80                    |
| Grant             | 22,309              | 18,149         | 3,602          | 97             | 385                         | 76             | 17,158    | 13,788    | 2,978     | 67        | 274                       | 51        | 11,900                | 10,361                | 1,284                 | 255                   |
| Jackson           | 16,274              | 11,084         | 4,947          | 67             | 83                          | 93             | 12,570    | 8,681     | 3,724     | 39        | 65                        | 61        | 9,846                 | 6,879                 | 2,805                 | 162                   |
| La Salle          | 14,890              | 12,689         | 1,808          | 40             | 215                         | 138            | 11,366    | 9,677     | 1,402     | 35        | 143                       | 109       | 8,427                 | 7,648                 | 621                   | 158                   |
| Lincoln           | 46,735              | 25,775         | 19,184         | 874            | 230                         | 672            | 37,130    | 20,875    | 14,821    | 749       | 183                       | 502       | 24,016                | 14,604                | 8,519                 | 893                   |
| Madison           | 12,093              | 4,498          | 7,452          | 33             | 55                          | 55             | 9,071     | 3,644     | 5,312     | 20        | 45                        | 50        | 7,634                 | 2,780                 | 4,764                 | 90                    |
| Morehouse         | 27,979              | 14,345         | 13,281         | 142            | 102                         | 109            | 21,061    | 11,583    | 9,230     | 102       | 79                        | 67        | 18,681                | 10,048                | 8,329                 | 304                   |
| Ouachita          | 153,720             | 92,884         | 57,194         | 1,722          | 705                         | 1,215          | 113,347   | 72,316    | 38,405    | 1,248     | 549                       | 829       | 94,408                | 59,945                | 30,997                | 3,466                 |
| *Rapides          | 108,751             | 73,373         | 30,732         | 1,742          | 1,493                       | 1,411          | 80,956    | 56,917    | 20,717    | 1,256     | 1,121                     | 945       | 64,312                | 47,179                | 14,841                | 2,292                 |
| Richland          | 20,725              | 12,879         | 7,544          | 92             | 96                          | 114            | 15,440    | 9,999     | 5,237     | 65        | 70                        | 69        | 12,939                | 8,173                 | 4,646                 | 120                   |
| Tensas            | 5,252               | 2,202          | 2,991          | 13             | 15                          | 31             | 3,923     | 1,796     | 2,085     | 11        | 9                         | 22        | 4,131                 | 1,807                 | 2,304                 | 20                    |
| Union             | 22,721              | 15,682         | 6,242          | 49             | 115                         | 633            | 17,493    | 12,568    | 4,439     | 31        | 91                        | 364       | 14,964                | 10,863                | 3,709                 | 392                   |
| West Carroll      | 11,604              | 9,497          | 1,870          | 34             | 86                          | 117            | 8,746     | 7,254     | 1,330     | 24        | 62                        | 76        | 7,167                 | 6,017                 | 1,096                 | 54                    |
| Winn              | 15,313              | 10,223         | 4,777          | 53             | 167                         | 93             | 11,871    | 8,018     | 3,619     | 44        | 129                       | 61        | 8,892                 | 6,410                 | 2,406                 | 76                    |
| District 5        | 565,448             | 354,779        | 196,162        | 5,230          | 4,199                       | 5,078          | 426,567   | 277,735   | 138,380   | 3,879     | 3,170                     | 3,403     | 340,390               | 226,744               | 104,871               | 8,775                 |
|                   | 100.000%            | 62.743%        | 34.691%        | 0.925%         | 0.743%                      | 0.898%         | 100.000%  | 65.109%   | 32.440%   | 0.909%    | 0.743%                    | 0.798%    | 79.798%               | 66.613%               | 30.809%               | 2.578%                |
| District 6        |                     |                |                |                |                             |                |           |           |           |           |                           |           |                       |                       |                       |                       |
| *Ascension        | 88,331              | 72,814         | 11,835         | 1,130          | 523                         | 2,029          | 62,821    | 52,692    | 7,758     | 733       | 365                       | 1,273     | 52,535                | 44,462                | 5,732                 | 2,341                 |
| *East Baton Rouge | 257,713             | 183,394        | 57,718         | 10,951         | 1,309                       | 4,341          | 203,591   | 150,456   | 40,404    | 8,481     | 1,007                     | 3,243     | 152,638               | 120,091               | 25,401                | 7,146                 |
| Livingston        | 128,026             | 117,601        | 6,941          | 906            | 1,055                       | 1,523          | 92,696    | 85,855    | 4,535     | 565       | 782                       | 959       | 71,580                | 66,508                | 2,985                 | 2,087                 |
| *Tangipahoa       | 91,241              | 63,632         | 24,727         | 825            | 622                         | 1,435          | 68,810    | 50,359    | 16,386    | 624       | 478                       | 963       | 51,025                | 38,211                | 11,139                | 1,675                 |
| District 6        | 565,311             | 437,441        | 101,221        | 13,812         | 3,509                       | 9,328          | 427,918   | 339,362   | 69,083    | 10,403    | 2,632                     | 6,438     | 327,778               | 269,272               | 45,257                | 13,249                |
|                   | 100.000%            | 77.381%        | 17.905%        | 2.443%         | 0.621%                      | 1.650%         | 100.000%  | 79.305%   | 16.144%   | 2.431%    | 0.615%                    | 1.504%    | 76.598%               | 82.151%               | 13.807%               | 4.042%                |
| District 7        |                     |                |                |                |                             |                |           |           |           |           |                           |           |                       |                       |                       |                       |

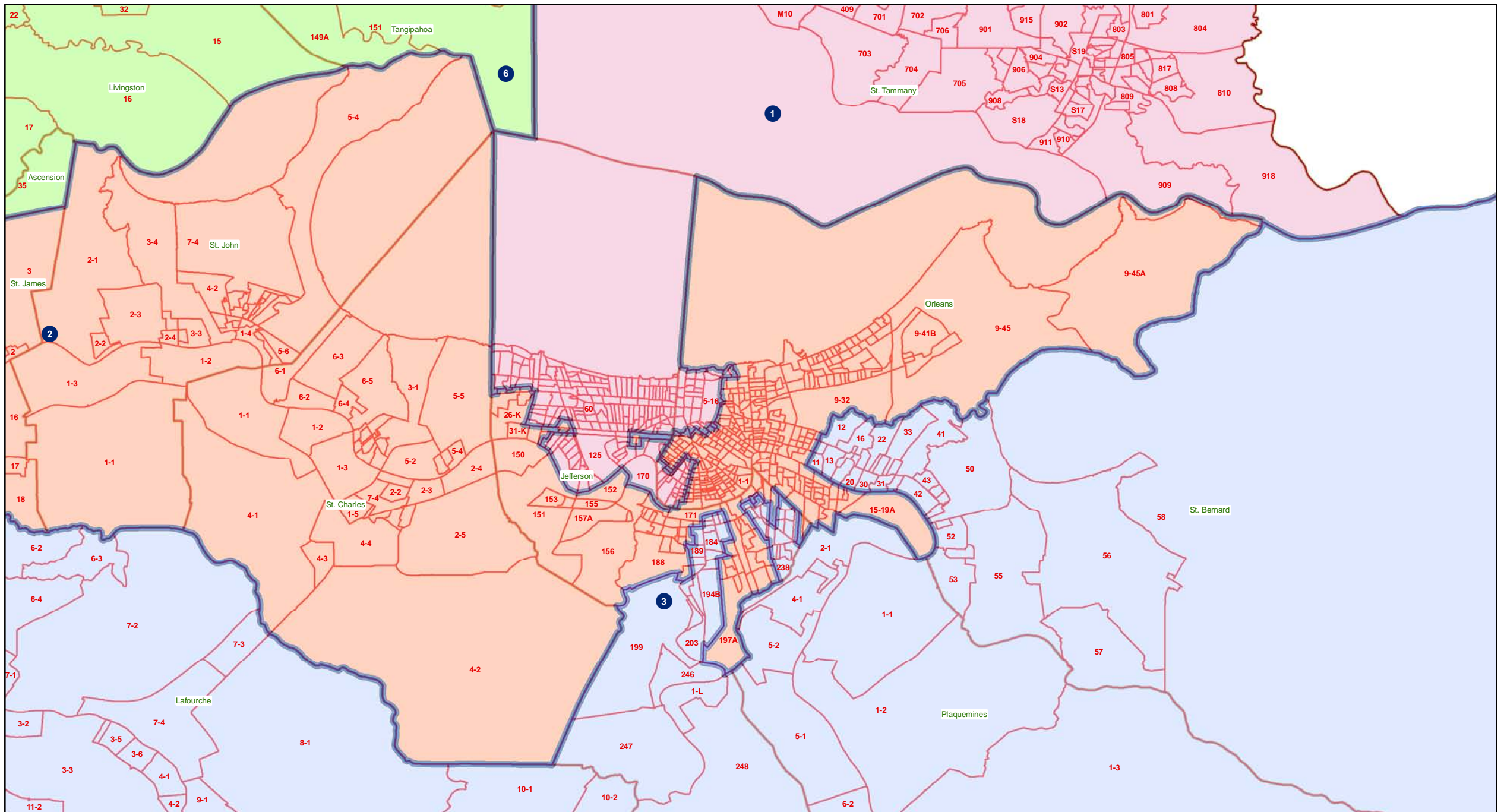
## Splits

|                   | Total<br>Population | Total<br>White | Total<br>Black | Total<br>Asian | Total<br>American<br>Indian | Total<br>Other | VAP Total | VAP White | VAP Black | VAP Asian | VAP<br>American<br>Indian | VAP Other | Reg Total<br>Jan 2011 | Reg White<br>Jan 2011 | Reg Black<br>Jan 2011 | Reg Other<br>Jan 2011 |
|-------------------|---------------------|----------------|----------------|----------------|-----------------------------|----------------|-----------|-----------|-----------|-----------|---------------------------|-----------|-----------------------|-----------------------|-----------------------|-----------------------|
| District 7        |                     |                |                |                |                             |                |           |           |           |           |                           |           |                       |                       |                       |                       |
| Acadia            | 61,773              | 49,127         | 11,645         | 196            | 313                         | 492            | 44,910    | 36,554    | 7,668     | 131       | 213                       | 344       | 37,256                | 30,346                | 6,441                 | 469                   |
| Allen             | 25,764              | 18,435         | 6,192          | 220            | 749                         | 168            | 19,870    | 14,288    | 4,828     | 154       | 495                       | 105       | 13,110                | 10,190                | 2,397                 | 523                   |
| Beauregard        | 35,654              | 29,321         | 5,016          | 353            | 652                         | 312            | 26,359    | 21,902    | 3,569     | 239       | 460                       | 189       | 19,924                | 16,703                | 2,304                 | 917                   |
| Calcasieu         | 192,768             | 136,514        | 49,825         | 2,550          | 1,626                       | 2,253          | 143,756   | 105,077   | 34,139    | 1,846     | 1,187                     | 1,507     | 117,844               | 86,021                | 27,975                | 3,848                 |
| Cameron           | 6,839               | 6,546          | 135            | 10             | 60                          | 88             | 5,183     | 5,011     | 74        | 9         | 38                        | 51        | 5,536                 | 5,272                 | 188                   | 76                    |
| Evangeline        | 33,984              | 23,439         | 9,862          | 139            | 161                         | 383            | 24,817    | 17,619    | 6,661     | 97        | 117                       | 323       | 21,407                | 15,267                | 5,973                 | 167                   |
| Jefferson Davis   | 31,594              | 25,125         | 5,836          | 98             | 275                         | 260            | 23,196    | 18,871    | 3,891     | 66        | 180                       | 188       | 19,337                | 15,808                | 3,132                 | 397                   |
| *Lafayette        | 140,778             | 110,621        | 23,312         | 3,236          | 839                         | 2,770          | 108,067   | 87,375    | 15,677    | 2,422     | 624                       | 1,969     | 81,087                | 68,308                | 9,232                 | 3,547                 |
| Vermilion         | 57,999              | 46,922         | 8,654          | 1,274          | 376                         | 773            | 42,522    | 35,424    | 5,457     | 902       | 259                       | 480       | 34,753                | 29,351                | 4,628                 | 774                   |
| District 7        | 587,153             | 446,050        | 120,477        | 8,076          | 5,051                       | 7,499          | 438,680   | 342,121   | 81,964    | 5,866     | 3,573                     | 5,156     | 350,254               | 277,266               | 62,270                | 10,718                |
|                   | 100.000%            | 75.968%        | 20.519%        | 1.375%         | 0.860%                      | 1.277%         | 100.000%  | 77.989%   | 18.684%   | 1.337%    | 0.814%                    | 1.175%    | 79.843%               | 79.161%               | 17.779%               | 3.060%                |
| District 8        |                     |                |                |                |                             |                |           |           |           |           |                           |           |                       |                       |                       |                       |
| *Ascension        | 18,884              | 5,758          | 12,631         | 104            | 63                          | 328            | 13,639    | 4,645     | 8,653     | 83        | 47                        | 211       | 11,569                | 3,770                 | 7,524                 | 275                   |
| *Assumption       | 14,694              | 7,371          | 7,070          | 23             | 78                          | 152            | 11,033    | 5,859     | 4,996     | 16        | 48                        | 114       | 9,560                 | 4,961                 | 4,558                 | 41                    |
| Avoyelles         | 42,073              | 28,188         | 12,876         | 174            | 641                         | 194            | 31,790    | 21,850    | 9,247     | 126       | 431                       | 136       | 23,105                | 16,874                | 5,790                 | 441                   |
| *East Baton Rouge | 182,458             | 31,533         | 144,816        | 2,613          | 604                         | 2,892          | 132,915   | 27,419    | 100,892   | 1,990     | 479                       | 2,135     | 99,979                | 18,060                | 78,409                | 3,510                 |
| East Feliciana    | 20,267              | 10,783         | 9,250          | 67             | 127                         | 40             | 16,075    | 8,775     | 7,123     | 58        | 94                        | 25        | 13,411                | 7,629                 | 5,126                 | 656                   |
| Iberville         | 33,387              | 16,280         | 16,620         | 124            | 117                         | 246            | 25,885    | 13,254    | 12,258    | 85        | 98                        | 190       | 20,452                | 10,414                | 9,754                 | 284                   |
| *Lafayette        | 53,412              | 19,708         | 32,511         | 252            | 258                         | 683            | 39,662    | 16,244    | 22,517    | 188       | 197                       | 516       | 33,320                | 12,828                | 19,352                | 1,140                 |
| Pointe Coupee     | 22,802              | 14,010         | 8,427          | 69             | 71                          | 225            | 17,327    | 11,073    | 6,020     | 44        | 57                        | 133       | 15,464                | 9,584                 | 5,696                 | 184                   |
| *Rapides          | 22,862              | 10,000         | 12,418         | 170            | 189                         | 85             | 16,643    | 7,662     | 8,651     | 121       | 149                       | 60        | 13,744                | 6,149                 | 7,266                 | 329                   |
| St. Helena        | 11,203              | 5,034          | 6,014          | 16             | 72                          | 67             | 8,440     | 4,036     | 4,291     | 11        | 60                        | 42        | 8,432                 | 3,816                 | 4,517                 | 99                    |
| St. Landry        | 83,384              | 46,615         | 35,153         | 395            | 406                         | 815            | 60,704    | 35,593    | 23,997    | 266       | 278                       | 570       | 56,549                | 31,901                | 23,591                | 1,057                 |
| *Tangipahoa       | 16,429              | 5,917          | 10,215         | 99             | 59                          | 139            | 11,982    | 4,762     | 7,017     | 64        | 45                        | 94        | 9,765                 | 3,930                 | 5,603                 | 232                   |
| West Baton Rouge  | 23,788              | 14,271         | 9,132          | 114            | 85                          | 186            | 17,861    | 11,067    | 6,517     | 92        | 67                        | 118       | 14,796                | 9,244                 | 5,408                 | 144                   |
| West Feliciana    | 15,625              | 8,125          | 7,317          | 42             | 35                          | 106            | 12,907    | 6,412     | 6,364     | 24        | 33                        | 74        | 6,796                 | 4,448                 | 2,254                 | 94                    |
| District 8        | 561,268             | 223,593        | 324,450        | 4,262          | 2,805                       | 6,158          | 416,863   | 178,651   | 228,543   | 3,168     | 2,083                     | 4,418     | 336,942               | 143,608               | 184,848               | 8,486                 |
|                   | 100.000%            | 39.837%        | 57.807%        | 0.759%         | 0.500%                      | 1.097%         | 100.000%  | 42.856%   | 54.824%   | 0.760%    | 0.500%                    | 1.060%    | 80.828%               | 42.621%               | 54.860%               | 2.519%                |

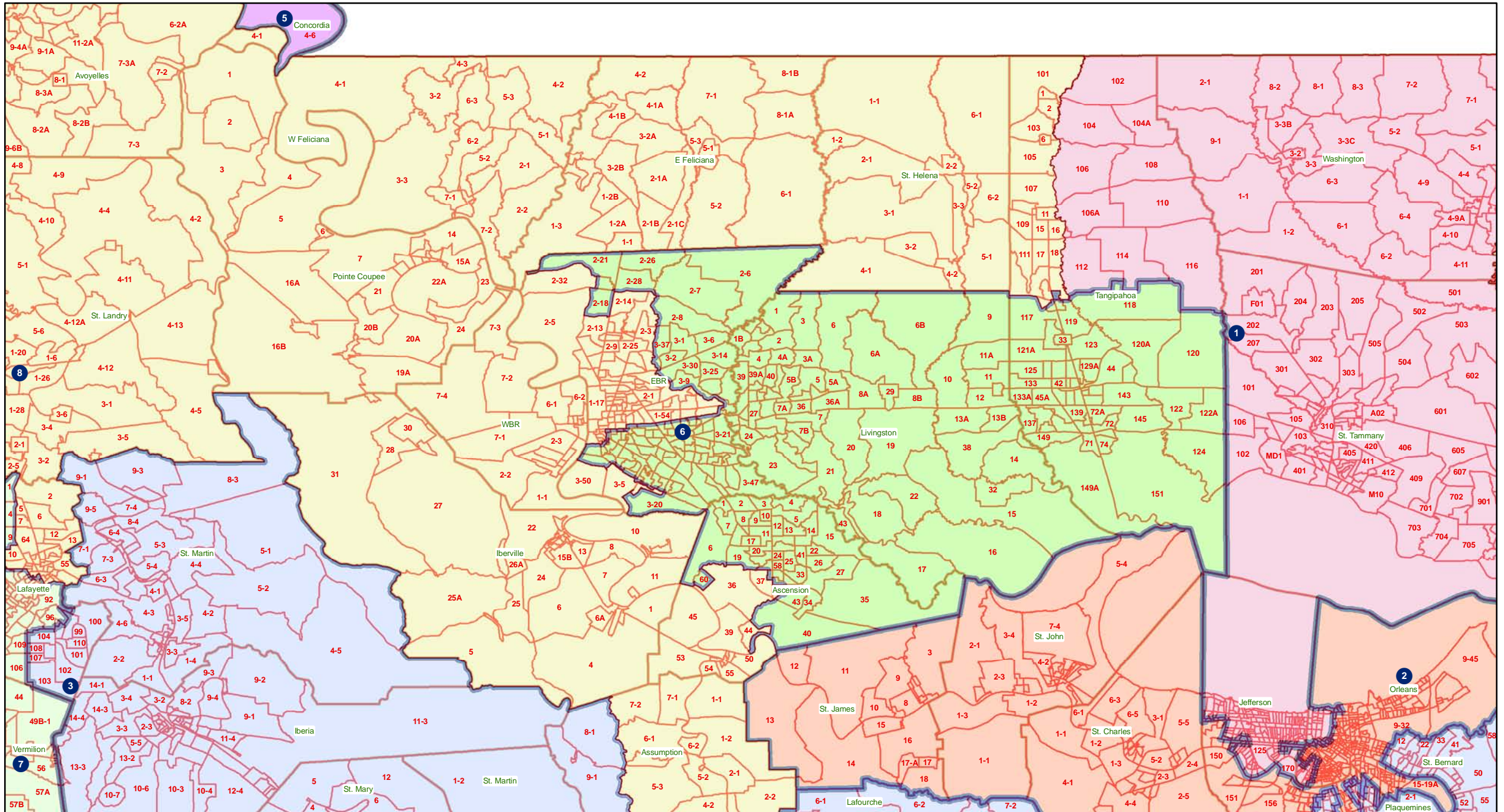
# BESE-Statewide



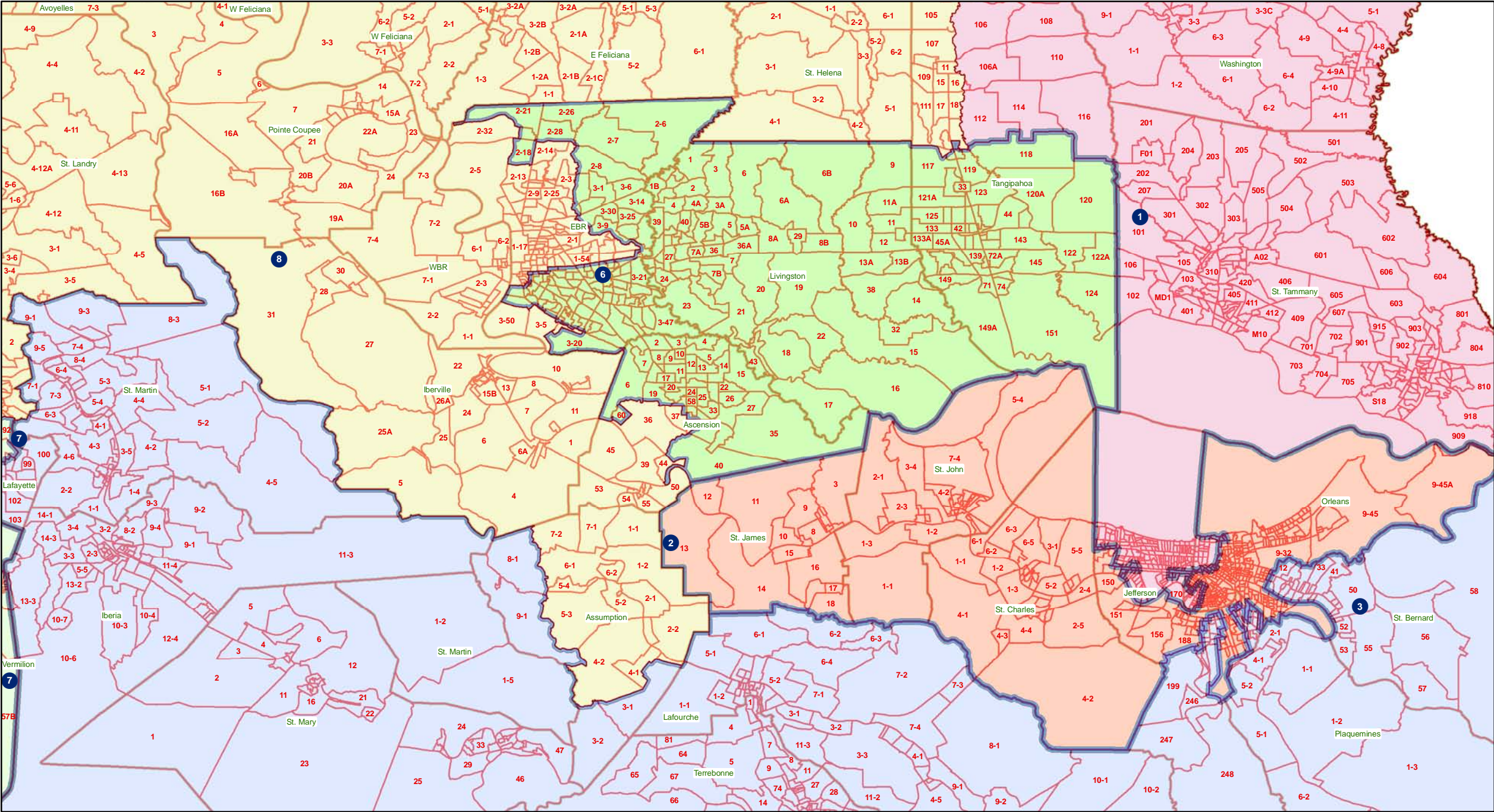
# BESE-Orleans-Jefferson



# BESE-East Baton Rouge Area

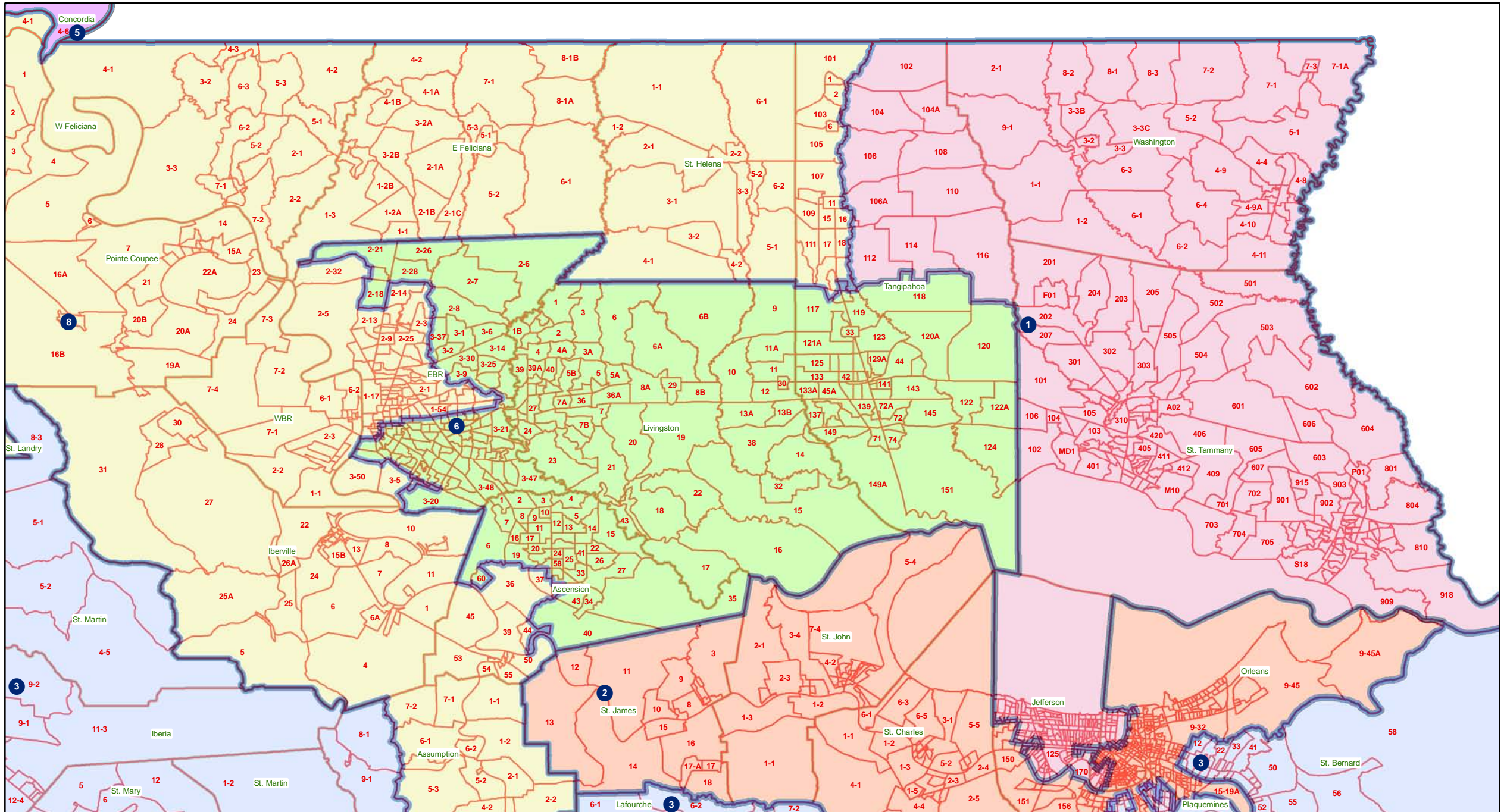


# BESE-River Parishes Area

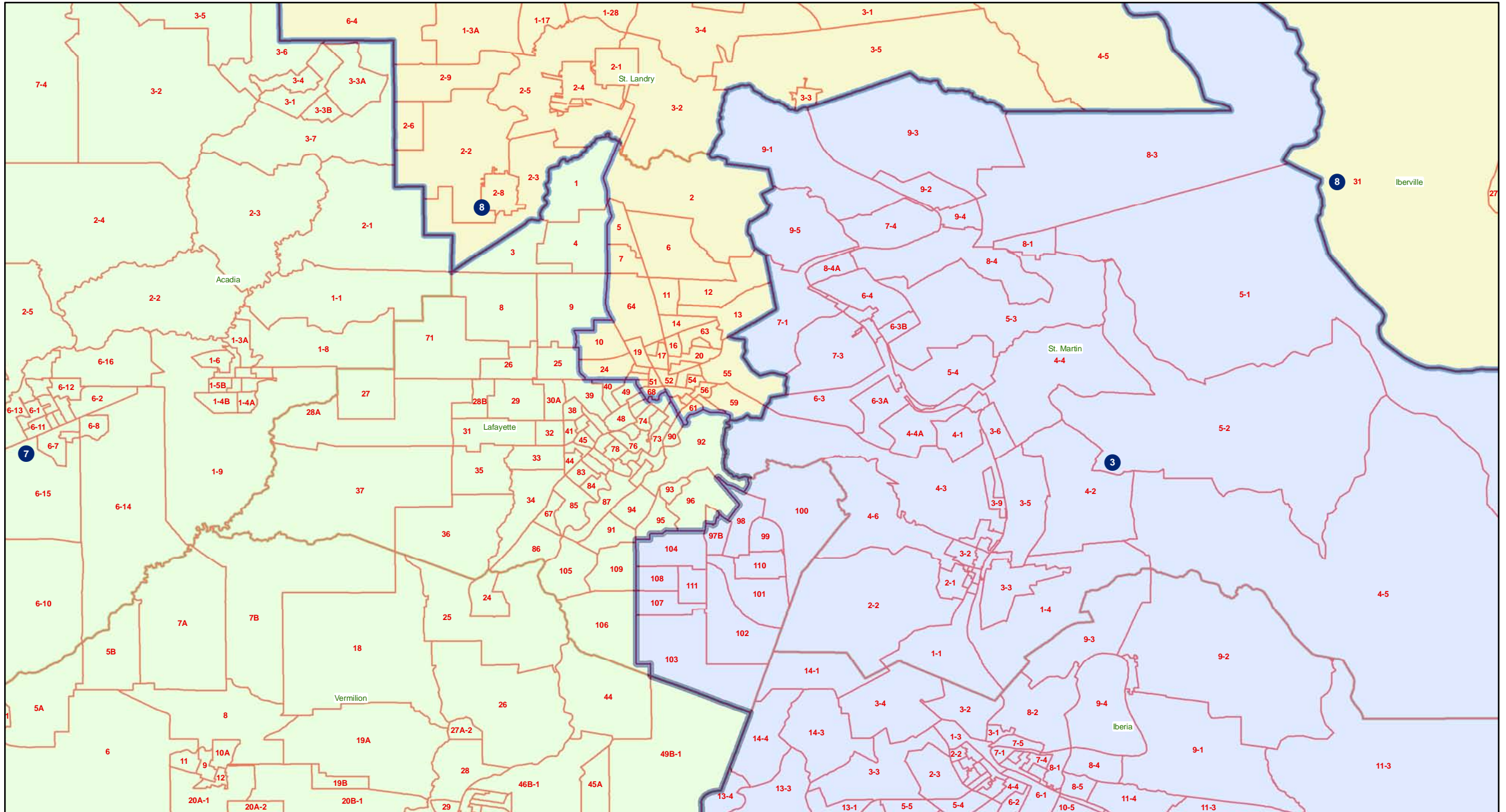




# BESE-Florida Parishes Area



# BESE-Lafayette Area



# BESE-Avoyelles-Rapides Area

