

First Extraordinary Session, 2011

SENATE BILL NO. 23

BY SENATOR MARIONNEAUX

CONGRESS. Provides for the redistricting of Louisiana's congressional districts.

1 AN ACT

2 To enact R.S. 18:1276.1 and to repeal R.S. 18:1276, relative to congressional districts; to
3 provide for the redistricting of Louisiana's seven congressional districts into six
4 congressional districts; to provide relative to the terms of members of congress
5 serving on the effective date of the Act; to provide for the filling of vacancies; to
6 provide relative to positions and offices, other than congressional, that are based
7 upon congressional districts; to provide for the effectiveness of the Act; and to
8 provide for related matters.

9 Be it enacted by the Legislature of Louisiana:

10 Section 1. R.S. 18:1276.1 is hereby enacted to read as follows:

11 **§1276.1. Congressional districts**

12 **A. Louisiana is divided into six congressional districts, and the qualified**
13 **electors of each district shall elect one representative to the United States House**
14 **of Representatives.**

15 **(1) District 1 is composed of Precincts 1, 2, 3, 4, 5, 7, 8, 9, 10, 11, 12, 13,**
16 **14, 15, 16, 17, 18, 19, 20, 21, 22, 23, 24, 25, 26, 27, 28, 29, 30, 31, 32, 33, 34, 35, 36,**
17 **37, 38, 39, 40, 41, 42, 43, 44, 45, 46, 51, 52, 53, 54, 55, 56, 58, 59, 60, 61, 62, 63, 64,**

1 65, 66, 67, 68, 69, 70, 71, 72, 73, 74, 75, 76, 77, 78, 79, 80, 81, 82, 83, 84, 85, 86, 87,
2 88, 89, 90, 91, 92, 93, 94, 95, 96, 97, 98, 99, 100, 101, 102, 103, 105, 106, 117, 118,
3 119, 120, 121, 122, 123, 124, 125, 126, 127, 128, 129, 130, 132, 134, 136, 246, 247,
4 248, 1-GI, 1-H, 2-H, 3-H, 4-H, 5-H, 6-H, 7-H, 8-H, 9-H, 1-K, 2-K, 3-K, 4-K, 5-K,
5 6-K, 7-K, 8-K, 9-K, 10-K, 11-K, 12-K, 13-KA, 17-K, 19-K, 20-K, 25-K, 27-K,
6 28-K, 34-K, 35-K and 1-L of Jefferson Parish; Lafourche Parish; Precincts 4-9,
7 4-11, 4-14, 4-15, 4-17, 4-17A, 4-18, 4-20, 4-21, 4-22, 4-23, 5-15, 5-16, 5-17, 5-18,
8 7-41, 7-42, 14-1, 14-2, 14-3, 14-4, 14-5, 14-6, 14-7, 14-8, 14-9, 14-10, 14-11, 14-14,
9 14-15, 14-16, 14-17, 14-20, 16-1, 16-1A, 16-2, 16-3, 17-1, 17-18, 17-18A, 17-19
10 and 17-20 of Orleans Parish; Plaquemines Parish; St. Bernard Parish; St.
11 Tammany Parish and Terrebonne Parish.

12 (2) District 2 is composed of Precincts 36, 45, 47, 51, 52, 53, 54, 55, 56
13 and 57 of Ascension Parish; Precincts 1-1, 1-2, 2-1, 2-2, 5-1, 5-2 and 6-2 of
14 Assumption Parish; Precincts 1-1, 1-2, 1-3, 1-4, 1-5, 1-6, 1-10, 1-13, 1-14, 1-15,
15 1-16, 1-17, 1-18, 1-19, 1-21, 1-22, 1-23, 1-24, 1-25, 1-26, 1-27, 1-28, 1-29, 1-30,
16 1-31, 1-32, 1-36, 1-37, 1-38, 1-45, 1-50, 1-51, 1-58, 1-61, 1-62, 1-63, 1-67, 1-68,
17 1-77, 1-84, 1-85, 1-86, 1-91, 1-92, 1-93, 1-94, 1-95, 1-100, 1-101, 1-104, 2-1, 2-2,
18 2-9, 2-11, 2-16, 2-20, 2-22, 2-23, 2-24, 2-27 and 2-30 of East Baton Rouge Parish;
19 Precincts 1, 2, 3, 6, 7, 8, 10, 11, 12, 13A, 13B, 13C, 14A, 16, 19, 19A, 20, 21, 22
20 and 23 of Iberville Parish; Precincts 57, 104, 107, 108, 115, 116, 131, 133, 138,
21 150, 151, 152, 153, 154, 155, 156, 157A, 157B, 170, 171, 172, 173, 174, 175, 176,
22 177, 178, 179A, 179B, 180, 181, 182, 183, 184, 185A, 185B, 187, 188, 189, 190,
23 191, 192, 193, 194A, 194B, 195, 196, 197A, 197B, 197C, 198, 199, 200, 201, 202,
24 203, 204, 205, 210, 211, 212A, 212B, 213A, 213B, 213C, 214A, 214B, 215, 216A,
25 216B, 217, 225, 226, 227, 228, 229, 230, 231, 232A, 232B, 234, 235, 236, 237, 238,
26 1-G, 2-G, 3-G, 4-G, 5-G, 6-G, 7-G, 8-G, 9-G, 10-G, 11-G, 12-G, 13-G, 13-KB,
27 14-K, 15-K, 16-K, 18-K, 21-K, 22-K, 23-K, 24-K, 26-K, 29-K, 30-K, 31-K, 33-K,
28 1-W, 2-W, 3-W, 4-W, 5-W, 6-W and 7-W of Jefferson Parish; Precincts 1-1, 1-2,
29 1-5, 1-6, 2-1, 2-2, 2-3, 2-4, 2-6, 2-6A, 2-7, 3-1, 3-3, 3-5, 3-8, 3-9, 3-12, 3-14, 3-15,

1 3-18, 3-19, 3-20, 4-2, 4-3, 4-4, 4-5, 4-6, 4-7, 4-8, 5-1, 5-2, 5-3, 5-4, 5-5, 5-7, 5-8, 5-9,
 2 5-10, 5-11, 5-12, 5-13, 6-1, 6-2, 6-4, 6-6, 6-7, 6-8, 6-9, 7-1, 7-2, 7-4, 7-5, 7-6, 7-7,
 3 7-8, 7-9A, 7-10, 7-11, 7-12, 7-13, 7-14, 7-15, 7-16, 7-17, 7-18, 7-19, 7-20, 7-21,
 4 7-23, 7-24, 7-25, 7-25A, 7-26, 7-27, 7-27B, 7-28, 7-28A, 7-29, 7-30, 7-32, 7-33,
 5 7-34, 7-35, 7-37, 7-37A, 7-40, 8-1, 8-2, 8-4, 8-6, 8-7, 8-8, 8-9, 8-12, 8-13, 8-14,
 6 8-15, 8-19, 8-20, 8-21, 8-22, 8-23, 8-24, 8-25, 8-26, 8-27, 8-28, 8-30, 9-1, 9-3, 9-3A,
 7 9-4, 9-5, 9-5A, 9-6B, 9-6C, 9-6D, 9-6E, 9-6F, 9-7, 9-8, 9-8A, 9-9, 9-10, 9-11, 9-12,
 8 9-13, 9-14, 9-15, 9-16, 9-17, 9-19, 9-21, 9-23, 9-25, 9-26, 9-28, 9-28C, 9-28E, 9-29,
 9 9-30, 9-30A, 9-31, 9-31A, 9-31B, 9-31D, 9-32, 9-33, 9-34A, 9-35, 9-35A, 9-36,
 10 9-36B, 9-37, 9-38, 9-38A, 9-39, 9-39B, 9-40, 9-40A, 9-40C, 9-41, 9-41A, 9-41B,
 11 9-41C, 9-41D, 9-42, 9-42C, 9-43A, 9-43B, 9-43C, 9-43E, 9-43F, 9-43G, 9-43H,
 12 9-43I, 9-43J, 9-43K, 9-43L, 9-43M, 9-43N, 9-44, 9-44A, 9-44B, 9-44D, 9-44E,
 13 9-44F, 9-44G, 9-44I, 9-44J, 9-44L, 9-44M, 9-44N, 9-44O, 9-44P, 9-44Q, 9-45,
 14 9-45A, 10-3, 10-6, 10-7, 10-8, 10-9, 10-11, 10-12, 10-13, 10-14, 11-2, 11-3, 11-4,
 15 11-5, 11-8, 11-9, 11-10, 11-11, 11-12, 11-13, 11-14, 11-17, 12-1, 12-2, 12-3, 12-4,
 16 12-5, 12-6, 12-7, 12-8, 12-9, 12-10, 12-11, 12-12, 12-13, 12-14, 12-16, 12-17, 12-19,
 17 13-1, 13-2, 13-3, 13-4, 13-5, 13-6, 13-7, 13-8, 13-9, 13-10, 13-11, 13-12, 13-13,
 18 13-14, 13-15, 13-16, 14-12, 14-13A, 14-18A, 14-19, 14-21, 14-23, 14-24A, 14-25,
 19 14-26, 15-1, 15-2, 15-3, 15-5, 15-6, 15-8, 15-9, 15-10, 15-11, 15-12, 15-12A, 15-13,
 20 15-13A, 15-13B, 15-14, 15-14A, 15-14B, 15-14C, 15-14D, 15-14E, 15-14F,
 21 15-14G, 15-15, 15-15A, 15-15B, 15-16, 15-17, 15-17A, 15-17B, 15-18, 15-18A,
 22 15-18B, 15-18C, 15-18D, 15-18E, 15-18F, 15-19, 15-19A, 15-19B, 15-19C, 16-4,
 23 16-5, 16-6, 16-7, 16-8, 16-9, 17-2, 17-3, 17-4, 17-5, 17-6, 17-7, 17-8, 17-9, 17-10,
 24 17-11, 17-12, 17-13, 17-13A, 17-14, 17-15, 17-16 and 17-17 of Orleans Parish;
 25 Precincts 1-1, 1-2, 1-3, 1-5, 2-1, 2-2, 2-3, 2-4, 2-5, 4-1, 4-2, 4-3, 4-4, 7-1, 7-2, 7-3
 26 and 7-4 of St. Charles Parish; St. James Parish; Precincts 1-1, 1-2, 1-3, 1-4, 1-5,
 27 2-1, 2-2, 2-3, 2-4, 3-1, 3-2, 3-3, 3-4, 4-1, 4-2, 4-3, 5-1, 5-2, 5-5, 6-3 and 6-4 of St.
 28 John the Baptist Parish and Precincts 1-1, 3-1A, 4-2, 4-4, 4-5 and 5-1 of West
 29 Baton Rouge Parish.

1 **(3) District 3 is composed of Acadia Parish; Calcasieu Parish; Cameron**
 2 **Parish; Iberia Parish; Jefferson Davis Parish; Lafayette Parish; Precincts 6-2,**
 3 **6-7 and 6-15 of St. Landry Parish; Precincts 1-1, 1-3, 1-4, 1-7, 2-1, 2-2, 2-3, 2-4,**
 4 **3-1, 3-1A, 3-1B, 3-2, 3-3, 3-4, 3-4A, 3-5, 3-6, 3-9, 4-1, 4-1A, 4-2, 4-3, 4-4, 4-4A,**
 5 **4-5, 4-6, 5-1, 5-2, 5-3, 5-4, 6-1, 6-2, 6-2A, 6-3, 6-3A, 6-3B, 6-4, 7-1, 7-1A, 7-2A,**
 6 **7-3, 7-4, 7-4A, 8-1, 8-3, 8-4, 8-4A, 9-1, 9-2, 9-3, 9-4 and 9-5 of St. Martin Parish;**
 7 **St. Mary Parish and Vermilion Parish.**

8 **(4) District 4 is composed of Beauregard Parish; Bienville Parish;**
 9 **Bossier Parish; Caddo Parish; Claiborne Parish; De Soto Parish; East Carroll**
 10 **Parish; Morehouse Parish; Natchitoches Parish; Precincts 9, 9A, 10, 11, 12, 13,**
 11 **14, 15, 16, 17, 18, 19, 20, 21, 22, 23, 24, 27, 28, 29, 30, 63, 65, 66, 67, 68, 69, 70, 73,**
 12 **74 and 79 of Ouachita Parish; Red River Parish; Sabine Parish; Union Parish;**
 13 **Vernon Parish; Webster Parish and West Carroll Parish.**

14 **(5) District 5 is composed of Allen Parish; Avoyelles Parish; Caldwell**
 15 **Parish; Catahoula Parish; Concordia Parish; East Feliciana Parish; Evangeline**
 16 **Parish; Franklin Parish; Grant Parish; Jackson Parish; La Salle Parish;**
 17 **Lincoln Parish; Madison Parish; Precincts 1, 2, 3, 4, 5, 6, 7, 8, 25, 26, 31, 32, 33,**
 18 **34, 35, 36, 37, 38, 39, 40, 41, 42, 43, 44, 44A, 45, 46, 47, 48, 49, 50, 51, 52, 53, 54,**
 19 **55, 56, 57, 58, 59, 60, 61, 62, 64, 71, 72, 75, 76, 77 and 78 of Ouachita Parish;**
 20 **Pointe Coupee Parish; Rapides Parish; Richland Parish; St. Helena Parish;**
 21 **Precincts 1-1, 1-2, 1-2A, 1-3, 1-3A, 1-4, 1-4A, 1-5, 1-6, 1-7, 1-8, 1-9, 1-10, 1-11,**
 22 **1-12, 1-13, 1-14, 1-15, 1-15A, 1-16, 1-17, 1-18, 1-19, 1-20, 1-21, 1-22, 1-23, 1-24,**
 23 **1-25, 1-26, 1-26A, 1-28, 1-28A, 1-29, 2-1, 2-2, 2-3, 2-4, 2-5, 2-6, 2-7, 2-8, 2-9, 3-1,**
 24 **3-2, 3-3, 3-4, 3-5, 3-6, 4-2, 4-3, 4-4, 4-5, 4-6, 4-7, 4-8, 4-9, 4-10, 4-11, 4-12, 4-12A,**
 25 **4-13, 5-1, 5-2, 5-3, 5-4, 5-5, 5-6, 5-8, 6-1, 6-3, 6-4, 6-5, 6-6, 6-8, 6-9, 6-10, 6-11,**
 26 **6-11A, 6-13, 6-14, 6-16 and 6-16A of St. Landry Parish; Precincts 1, 2, 6, 101,**
 27 **102, 103, 104, 104A, 105, 106 and 108 of Tangipahoa Parish; Tensas Parish;**
 28 **Washington Parish; West Feliciana Parish and Winn Parish.**

29 **(6) District 6 is composed of Precincts 1, 2, 3, 4, 5, 6, 7, 8, 9, 10, 11, 12,**

1 13, 14, 15, 16, 17, 18, 19, 20, 21, 22, 23, 24, 25, 26, 27, 28, 30, 31, 32, 33, 34, 35, 37,
2 39, 40, 41, 42, 43, 44, 48, 49, 50, 58, 60 and 61 of Ascension Parish; Precincts 2-3,
3 3-1, 3-2, 4-1, 4-2, 5-3, 5-4, 6-1, 7-1, 7-2, 8-1 and 9-1 of Assumption Parish;
4 Precincts 1-7, 1-8, 1-9, 1-12, 1-33, 1-34, 1-35, 1-39, 1-40, 1-41, 1-42, 1-43, 1-44,
5 1-46, 1-47, 1-48, 1-49, 1-52, 1-53, 1-54, 1-55, 1-56, 1-57, 1-59, 1-60, 1-64, 1-65,
6 1-66, 1-69, 1-70, 1-71, 1-72, 1-73, 1-74, 1-75, 1-78, 1-80, 1-81, 1-82, 1-83, 1-87,
7 1-88, 1-89, 1-90, 1-97, 1-98, 1-99, 1-102, 1-103, 1-105, 1-107, 2-3, 2-4, 2-5, 2-6, 2-7,
8 2-8, 2-10, 2-12, 2-13, 2-14, 2-15, 2-17, 2-18, 2-19, 2-21, 2-25, 2-26, 2-28, 2-29, 2-31,
9 2-32, 3-1, 3-2, 3-3, 3-4, 3-5, 3-6, 3-7, 3-8, 3-9, 3-10, 3-11, 3-12, 3-13, 3-14, 3-15,
10 3-16, 3-17, 3-18, 3-19, 3-20, 3-21, 3-22, 3-23, 3-24, 3-25, 3-26, 3-27, 3-28, 3-29,
11 3-30, 3-31, 3-32, 3-33, 3-34, 3-35, 3-36, 3-37, 3-38, 3-39, 3-40, 3-41, 3-42, 3-43,
12 3-44, 3-45, 3-46, 3-47, 3-48, 3-49, 3-50, 3-51, 3-52, 3-53, 3-54 and 3-55 of East
13 Baton Rouge Parish; Precincts 4, 5, 6A, 13, 14, 14B, 15, 15A, 15B, 17, 17A, 18,
14 24, 25, 25A, 25B, 26, 26A, 27, 28, 29, 30, 31 and 32 of Iberville Parish;
15 Livingston Parish; Precincts 1-6, 3-1, 3-2, 3-3, 3-4, 3-5, 3-6, 5-1, 5-2, 5-3, 5-4, 5-5,
16 6-1, 6-2, 6-3, 6-4, 6-5, 6-6, 6-7 and 6-8 of St. Charles Parish; Precincts 4-4, 4-8,
17 4-9, 5-3, 5-4, 5-6, 5-7, 6-1, 7-2, 7-3, 7-4, 7-5 and 7-7 of St. John the Baptist
18 Parish; Precincts 1-2 and 1-5 of St. Martin Parish; Precincts 11, 15, 16, 17, 18,
19 26, 27, 27A, 28, 28A, 33, 40, 40A, 41, 42, 42A, 43, 44, 45, 45A, 46, 47, 48, 49, 70,
20 70A, 71, 72, 72A, 73, 74, 106A, 106B, 107, 109, 109A, 110, 111, 111A, 112, 114,
21 115B, 116, 117, 118, 119, 120, 120A, 120B, 121, 121A, 121B, 122, 122A, 123, 124,
22 125, 127, 127A, 129, 129A, 133, 133A, 137, 137A, 137B, 137C, 137D, 139, 141,
23 141A, 143, 145, 149, 149A and 151 of Tangipahoa Parish and Precincts 2-1A,
24 2-1B, 2-2, 2-3, 3-1B, 3-2, 4-1, 4-3A, 4-3B, 6-1, 6-2, 7-1, 7-2, 7-3 and 7-4 of West
25 Baton Rouge Parish.

26 B. The precincts referenced in this Section are those precincts identified
27 as Voting Districts (VTDs) in the 2010 Census Redistricting TIGER/Line
28 Shapefiles for the State of Louisiana.

29 C. When a precinct referenced in this Section has been subdivided by

1 action of the parish governing authority on a nongeographic basis or subdivided
2 by action of the parish governing authority on a geographic basis in accordance
3 with the provisions of R.S. 18:532.1, the enumeration in this Section of the
4 general precinct designation shall include all nongeographic and all geographic
5 subdivisions thereof, however such subdivisions may be designated. The
6 territorial limits of the districts as provided in this Section shall continue in
7 effect without change regardless of any changes made to the precincts by the
8 parish governing authority.

9 D. This Section shall not reduce the term of office of any member of
10 congress who was elected at the 2010 congressional election or who was elected
11 to fill a vacancy for the remainder of a term that began on January 3, 2011.

12 E. A vacancy in the representation of any congressional district that is
13 filled after January 3, 2013, shall be filled as provided by law from that district
14 as it is described in this Section.

15 F. This Section shall not reduce the term of office of any person holding
16 any position or office on January 3, 2013, for which the appointment or election
17 is based upon a congressional district. Any position or office filled after
18 January 3, 2013, for which the appointment or election is based on a
19 congressional district shall be appointed or elected from that district as it is
20 described in this Section.

21 Section 2. R.S. 18:1276 is hereby repealed effective at noon on January 3, 2013.

22 Section 3. The provisions of Section 1 of this Act shall be effective solely for the
23 purposes of election of representatives to the United States Congress at the next regularly
24 scheduled election for representatives to the congress in 2012, commencing on the date and
25 at the time that the qualifying period opens for such offices. The effectiveness of Section
26 1 of this Act for such qualification and election shall not reduce the term of office of any
27 member of the congress or change the district which any member represents pursuant to R.S.
28 18:1276. For subsequent elections of representatives to the United States Congress and for
29 all other purposes, the provisions of Section 1 of this Act shall become effective at noon on

1 January 3, 2013.

The original instrument was prepared by Yolanda Johnson Dixon. The following digest, which does not constitute a part of the legislative instrument, was prepared by Cheryl Horne.

DIGEST

Marionneaux (SB 23)

Present law provides for seven La. congressional districts.

Proposed law repeals present law, and further redistricts the present La. congressional districts to provide for six La. congressional districts.

Effective for election purposes only for the regular congressional elections in 2012; effective for all purposes on 1/3/2013.

(Enacts R.S. 18:1276.1; repeals R.S. 18:1276)

Summary of Amendments Adopted by Senate

Senate Floor Amendments to engrossed bill.

1. Changes the composition of congressional districts as set forth in proposed law.

Plan Statistics

<u>Districts:</u>	<u># of Members</u>	<u>Actual Population</u>	<u>Ideal Population</u>	<u>Absolute Deviation</u>	<u>Relative Deviation</u>
District 1	1	755,571	755,562	9	0.001%
District 2	1	755,561	755,562	-1	0.000%
District 3	1	755,463	755,562	-99	-0.013%
District 4	1	755,656	755,562	94	0.012%
District 5	1	755,502	755,562	-60	-0.008%
District 6	1	755,619	755,562	57	0.008%
Grand Total:	6	4,533,372	4,533,372		

Ideal Population Per Member:	755562		
Number of Districts for Plan Type:	6		
Range of District Populations:	755,463	to	755,656
Absolute Mean Deviation:	32		
Absolute Range:	-99	to	94
Absolute Overall Range:	193		
Relative Mean Deviation:	0.01%		
Relative Range:	-0.01%	to	0.01%
Relative Overall Range:	0.02%		

<i>Ideal - Actual:</i>	0
<i>Remainder:</i>	0
<i>Unassigned Population:</i>	0

Total Population

	Total Population	Total White	Total Black	Total Asian	Total American Indian	Total Other	Total Hispanic	Reg Total Jan 2011
District 1	755,571	601,042	100,255	17,245	15,813	21,216	54,471	449,191
	100.000%	79.548%	13.269%	2.282%	2.093%	2.808%	7.209%	77.741%
District 2	755,561	240,947	469,769	21,062	4,159	19,624	45,418	449,468
	100.000%	31.890%	62.175%	2.788%	0.550%	2.597%	6.011%	78.600%
District 3	755,463	531,737	195,073	11,499	5,989	11,165	23,032	458,488
	100.000%	70.386%	25.822%	1.522%	0.793%	1.478%	3.049%	81.664%
District 4	755,656	431,911	294,979	8,750	9,568	10,448	23,670	431,863
	100.000%	57.157%	39.036%	1.158%	1.266%	1.383%	3.132%	76.351%
District 5	755,502	493,720	243,076	6,016	6,405	6,285	14,695	455,522
	100.000%	65.350%	32.174%	0.796%	0.848%	0.832%	1.945%	79.949%
District 6	755,619	536,835	183,733	16,979	4,619	13,453	31,274	435,843
	100.000%	71.046%	24.316%	2.247%	0.611%	1.780%	4.139%	76.614%
Grand Total	4,533,372	2,836,192	1,486,885	81,551	46,553	82,191	192,560	2,680,375
	100.000%	62.563%	32.799%	1.799%	1.027%	1.813%	4.248%	78.480%

Voter Registration

	Reg Total Jan 2011	Reg White Jan 2011	Reg Black Jan 2011	Reg Other Jan 2011	Reg Dem Total Jan 2011	Reg Rep Total Jan 2011	Reg Other Total Jan 2011
District 1	449,191	375,676	44,833	28,682	169,017	166,649	113,525
	77.741%	83.634%	9.981%	6.385%	37.627%	37.100%	25.273%
District 2	449,468	146,873	273,599	28,996	300,344	52,071	97,053
	78.600%	32.677%	60.872%	6.451%	66.822%	11.585%	21.593%
District 3	458,488	336,335	107,665	14,488	229,871	120,730	107,887
	81.664%	73.357%	23.483%	3.160%	50.137%	26.332%	23.531%
District 4	431,863	257,450	159,010	15,403	220,654	116,816	94,393
	76.351%	59.614%	36.820%	3.567%	51.094%	27.049%	21.857%
District 5	455,522	313,515	131,323	10,684	246,472	118,364	90,686
	79.949%	68.825%	28.829%	2.345%	54.108%	25.984%	19.908%
District 6	435,843	331,268	87,647	16,928	188,628	143,560	103,655
	76.614%	76.006%	20.110%	3.884%	43.279%	32.938%	23.783%
Grand Total	2,680,375	1,761,117	804,077	115,181	1,354,986	718,190	607,199

Splits

	Total Population	Total White	Total Black	Total Asian	Total American Indian	Total Other	VAP Total	VAP White	VAP Black	VAP Asian	VAP American Indian	VAP Other	Reg Total Jan 2011	Reg White Jan 2011	Reg Black Jan 2011	Reg Other Jan 2011
District 1																
*Jefferson	219,225	176,542	22,226	8,495	1,543	10,419	176,188	144,700	15,842	6,522	1,172	7,952	131,032	112,288	7,571	11,173
Lafourche	96,318	76,445	13,363	855	3,457	2,198	72,652	59,362	8,945	612	2,187	1,546	53,711	45,827	6,316	1,568
*Orleans	35,489	31,275	2,489	1,038	178	509	29,191	25,924	1,913	827	131	396	23,643	20,500	1,279	1,864
Plaquemines	23,042	16,246	4,951	844	556	445	16,713	12,086	3,367	583	396	281	14,534	10,541	3,075	918
St. Bernard	35,897	26,579	6,705	873	522	1,218	26,720	20,490	4,338	640	370	882	23,358	19,332	2,829	1,197
St. Tammany	233,740	195,364	28,449	3,807	2,182	3,938	173,604	147,964	18,752	2,570	1,579	2,739	143,614	121,851	13,495	8,268
Terrebonne	111,860	78,591	22,072	1,333	7,375	2,489	82,737	60,621	14,647	986	4,725	1,758	59,299	45,337	10,268	3,694
District 1	755,571	601,042	100,255	17,245	15,813	21,216	577,805	471,147	67,804	12,740	10,560	15,554	449,191	375,676	44,833	28,682
	100.000%	79.548%	13.269%	2.282%	2.093%	2.808%	100.000%	81.541%	11.735%	2.205%	1.828%	2.692%	77.741%	83.634%	9.981%	6.385%
District 2																
*Ascension	10,819	2,869	7,707	19	39	185	7,624	2,322	5,147	16	29	110	7,088	2,052	4,900	136
*Assumption	7,178	3,185	3,888	11	28	66	5,328	2,509	2,739	7	17	56	4,590	2,128	2,446	16
*East Baton Rouge	110,903	8,690	100,824	462	260	667	80,661	7,914	71,658	375	208	506	64,721	5,378	57,365	1,978
*Iberville	19,300	7,204	11,868	66	47	115	15,000	6,000	8,827	48	39	86	10,701	3,907	6,629	165
*Jefferson	213,327	95,573	94,773	10,148	1,859	10,974	158,967	76,573	65,460	7,588	1,317	8,029	121,045	56,839	52,562	11,644
*Orleans	308,340	82,153	207,958	9,913	1,518	6,798	241,423	73,756	152,781	8,013	1,268	5,605	188,129	49,936	124,369	13,824
*St. Charles	26,648	18,295	7,600	218	212	323	19,549	13,800	5,254	134	141	220	16,274	11,638	4,101	535
St. James	22,102	10,615	11,290	43	52	102	16,401	8,231	8,039	26	41	64	14,703	7,249	7,260	194
*St. John the Baptist	28,726	8,631	19,508	130	114	343	20,814	6,943	13,473	87	85	226	16,959	5,287	11,204	468
*West Baton Rouge	8,218	3,732	4,353	52	30	51	6,072	2,925	3,046	46	23	32	5,258	2,459	2,763	36
District 2	755,561	240,947	469,769	21,062	4,159	19,624	571,839	200,973	336,424	16,340	3,168	14,934	449,468	146,873	273,599	28,996
	100.000%	31.890%	62.175%	2.788%	0.550%	2.597%	100.000%	35.145%	58.832%	2.857%	0.554%	2.612%	78.600%	32.677%	60.872%	6.451%
District 3																
Acadia	61,773	49,127	11,645	196	313	492	44,910	36,554	7,668	131	213	344	37,256	30,346	6,441	469
Calcasieu	192,768	136,514	49,825	2,550	1,626	2,253	143,756	105,077	34,139	1,846	1,187	1,507	117,844	86,021	27,975	3,848
Cameron	6,839	6,546	135	10	60	88	5,183	5,011	74	9	38	51	5,536	5,272	188	76
Iberia	73,240	45,551	24,091	1,926	428	1,244	53,398	35,137	15,754	1,308	307	892	45,139	30,016	13,917	1,206
Jefferson Davis	31,594	25,125	5,836	98	275	260	23,196	18,871	3,891	66	180	188	19,337	15,808	3,132	397
Lafayette	221,578	153,706	58,912	3,891	1,290	3,779	167,315	120,566	40,203	2,884	951	2,711	131,124	95,632	30,155	5,337
*St. Landry	4,305	2,926	1,298	26	23	32	3,181	2,280	837	19	20	25	2,798	1,927	816	55
*St. Martin	50,717	32,914	16,387	470	329	617	37,226	25,185	11,086	310	212	433	32,856	21,890	9,886	1,080
St. Mary	54,650	32,406	18,290	1,058	1,269	1,627	40,746	25,191	12,797	773	837	1,148	31,845	20,072	10,527	1,246
Vermilion	57,999	46,922	8,654	1,274	376	773	42,522	35,424	5,457	902	259	480	34,753	29,351	4,628	774
District 3	755,463	531,737	195,073	11,499	5,989	11,165	561,433	409,296	131,906	8,248	4,204	7,779	458,488	336,335	107,665	14,488
	100.000%	70.386%	25.822%	1.522%	0.793%	1.478%	100.000%	72.902%	23.495%	1.469%	0.749%	1.386%	81.664%	73.357%	23.483%	3.160%

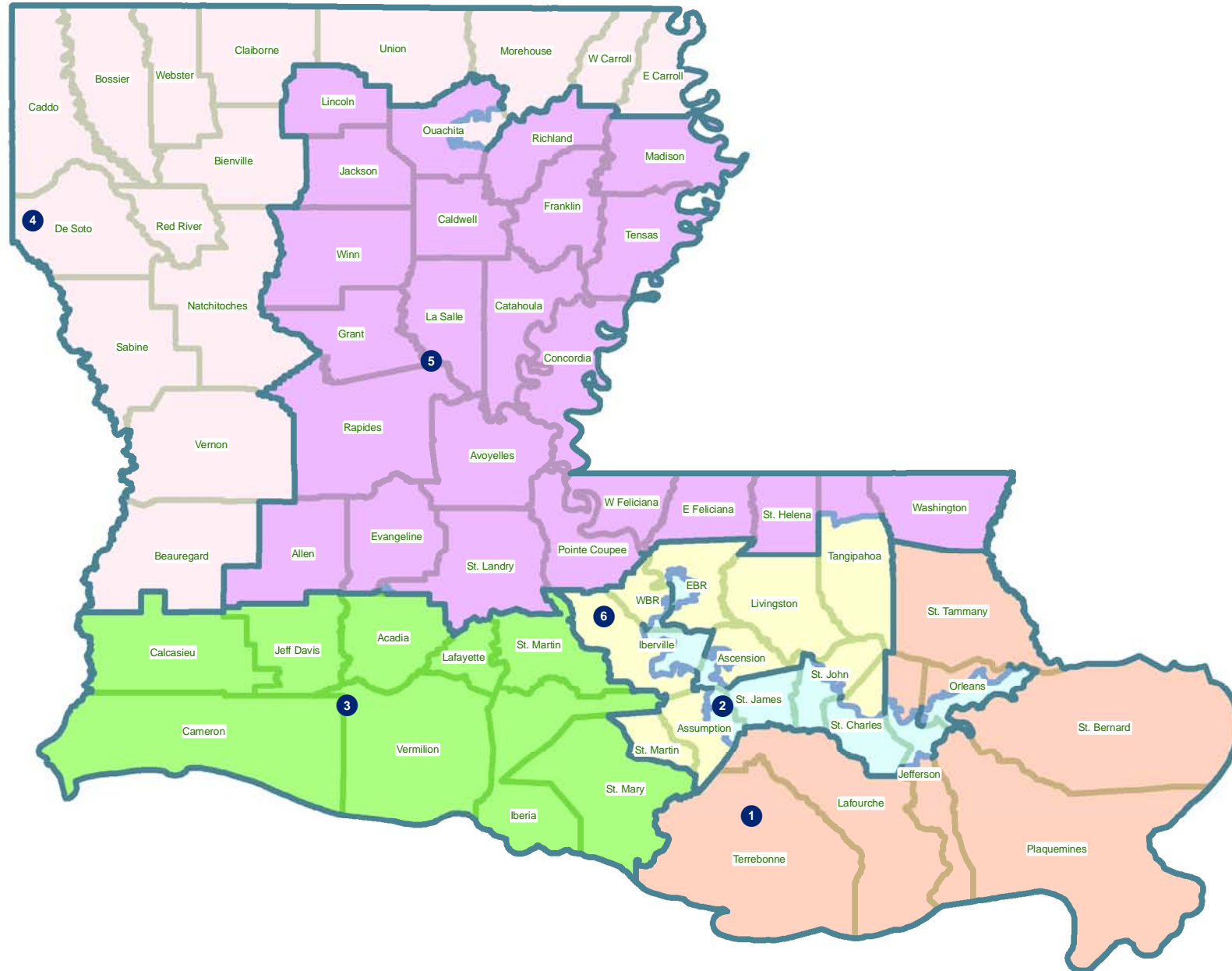
Splits

	Total Population	Total White	Total Black	Total Asian	Total American Indian	Total Other	VAP Total	VAP White	VAP Black	VAP Asian	VAP American Indian	VAP Other	Reg Total Jan 2011	Reg White Jan 2011	Reg Black Jan 2011	Reg Other Jan 2011
District 4																
Beauregard	35,654	29,321	5,016	353	652	312	26,359	21,902	3,569	239	460	189	19,924	16,703	2,304	917
Bienville	14,353	7,935	6,153	44	132	89	11,012	6,279	4,544	31	105	53	9,256	5,112	4,085	59
Bossier	116,979	84,430	25,606	2,516	1,139	3,288	86,945	64,692	17,413	1,836	837	2,167	60,834	46,663	11,491	2,680
Caddo	254,969	124,942	122,229	3,230	1,906	2,662	192,315	100,748	85,902	2,363	1,455	1,847	151,374	79,163	66,708	5,503
Claiborne	17,195	8,167	8,820	62	99	47	13,815	6,781	6,889	37	80	28	8,877	4,908	3,872	97
De Soto	26,656	15,456	10,600	54	331	215	20,006	12,055	7,495	42	273	141	16,396	9,663	6,191	542
East Carroll	7,759	2,245	5,398	47	31	38	5,766	1,845	3,830	37	25	29	5,330	1,617	3,664	49
Morehouse	27,979	14,345	13,281	142	102	109	21,061	11,583	9,230	102	79	67	18,681	10,048	8,329	304
Natchitoches	39,566	21,494	16,778	197	649	448	29,966	17,226	11,771	151	477	341	22,982	13,181	8,878	923
*Ouachita	53,356	9,799	42,762	316	154	325	37,740	8,405	28,708	283	116	228	30,727	5,139	24,363	1,225
Red River	9,091	5,360	3,633	16	43	39	6,778	4,256	2,450	12	34	26	5,981	3,566	2,377	38
Sabine	24,233	17,155	4,234	84	2,636	124	18,311	13,544	2,835	63	1,796	73	13,837	10,811	2,032	994
Union	22,721	15,682	6,242	49	115	633	17,493	12,568	4,439	31	91	364	14,964	10,863	3,709	392
Vernon	52,334	39,614	8,313	1,426	1,177	1,804	37,822	29,416	5,349	1,026	848	1,183	21,620	17,881	2,495	1,244
Webster	41,207	26,469	14,044	180	316	198	31,497	20,907	10,110	120	241	119	23,913	16,115	7,416	382
West Carroll	11,604	9,497	1,870	34	86	117	8,746	7,254	1,330	24	62	76	7,167	6,017	1,096	54
District 4	755,656	431,911	294,979	8,750	9,568	10,448	565,632	339,461	205,864	6,397	6,979	6,931	431,863	257,450	159,010	15,403
	100.000%	57.157%	39.036%	1.158%	1.266%	1.383%	100.000%	60.014%	36.395%	1.131%	1.234%	1.225%	76.351%	59.614%	36.820%	3.567%
District 5																
Allen	25,764	18,435	6,192	220	749	168	19,870	14,288	4,828	154	495	105	13,110	10,190	2,397	523
Avoyelles	42,073	28,188	12,876	174	641	194	31,790	21,850	9,247	126	431	136	23,105	16,874	5,790	441
Caldwell	10,132	8,213	1,778	30	64	47	7,758	6,314	1,336	23	51	34	6,324	5,351	911	62
Catahoula	10,407	6,985	3,318	9	53	42	8,057	5,543	2,438	8	43	25	6,380	4,749	1,596	35
Concordia	20,822	11,959	8,604	59	123	77	15,589	9,298	6,117	41	88	45	12,696	7,997	4,529	170
East Feliciana	20,267	10,783	9,250	67	127	40	16,075	8,775	7,123	58	94	25	13,411	7,629	5,126	656
Evangeline	33,984	23,439	9,862	139	161	383	24,817	17,619	6,661	97	117	323	21,407	15,267	5,973	167
Franklin	20,767	13,930	6,620	65	82	70	15,450	10,838	4,471	42	63	36	13,466	9,408	3,978	80
Grant	22,309	18,149	3,602	97	385	76	17,158	13,788	2,978	67	274	51	11,900	10,361	1,284	255
Jackson	16,274	11,084	4,947	67	83	93	12,570	8,681	3,724	39	65	61	9,846	6,879	2,805	162
La Salle	14,890	12,689	1,808	40	215	138	11,366	9,677	1,402	35	143	109	8,427	7,648	621	158
Lincoln	46,735	25,775	19,184	874	230	672	37,130	20,875	14,821	749	183	502	24,016	14,604	8,519	893
Madison	12,093	4,498	7,452	33	55	55	9,071	3,644	5,312	20	45	50	7,634	2,780	4,764	90
*Ouachita	100,364	83,085	14,432	1,406	551	890	75,607	63,911	9,697	965	433	601	63,681	54,806	6,634	2,241
Pointe Coupee	22,802	14,010	8,427	69	71	225	17,327	11,073	6,020	44	57	133	15,464	9,584	5,696	184
Rapides	131,613	83,373	43,150	1,912	1,682	1,496	97,599	64,579	29,368	1,377	1,270	1,005	78,056	53,328	22,107	2,621

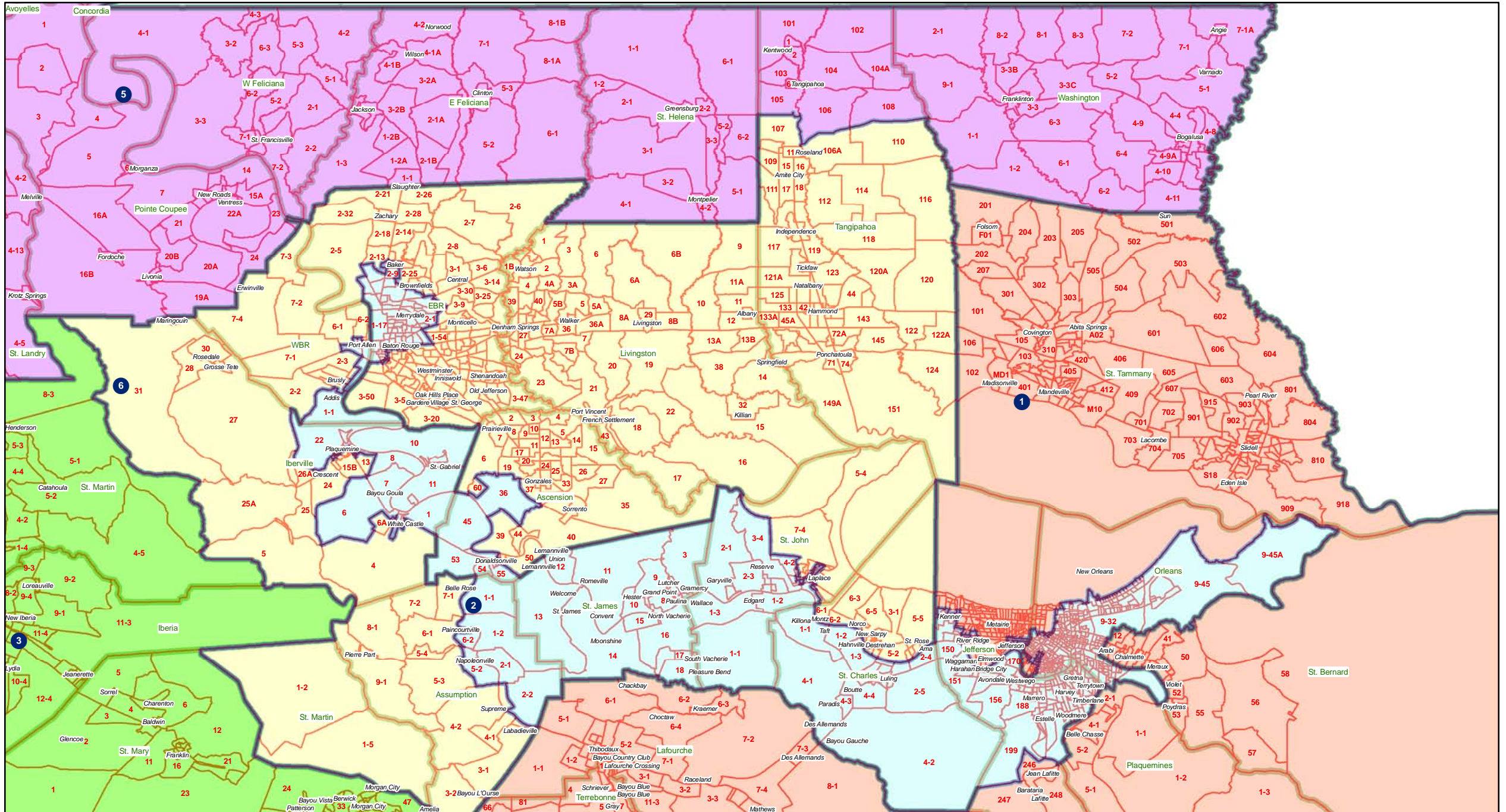
Splits

	Total Population	Total White	Total Black	Total Asian	Total American Indian	Total Other	VAP Total	VAP White	VAP Black	VAP Asian	VAP American Indian	VAP Other	Reg Total Jan 2011	Reg White Jan 2011	Reg Black Jan 2011	Reg Other Jan 2011
District 5																
Richland	20,725	12,879	7,544	92	96	114	15,440	9,999	5,237	65	70	69	12,939	8,173	4,646	120
St. Helena	11,203	5,034	6,014	16	72	67	8,440	4,036	4,291	11	60	42	8,432	3,816	4,517	99
*St. Landry	79,079	43,689	33,855	369	383	783	57,523	33,313	23,160	247	258	545	53,751	29,974	22,775	1,002
*Tangipahoa	9,841	5,491	4,192	25	60	73	7,125	4,190	2,834	19	41	41	6,050	3,459	2,452	139
Tensas	5,252	2,202	2,991	13	15	31	3,923	1,796	2,085	11	9	22	4,131	1,807	2,304	20
Washington	47,168	31,482	14,884	145	305	352	35,305	24,363	10,374	101	238	229	25,608	17,973	7,239	396
West Feliciana	15,625	8,125	7,317	42	35	106	12,907	6,412	6,364	24	33	74	6,796	4,448	2,254	94
Winn	15,313	10,223	4,777	53	167	93	11,871	8,018	3,619	44	129	61	8,892	6,410	2,406	76
District 5	755,502	493,720	243,076	6,016	6,405	6,285	569,768	382,880	173,507	4,367	4,690	4,324	455,522	313,515	131,323	10,684
	100.000%	65.350%	32.174%	0.796%	0.848%	0.832%	100.000%	67.199%	30.452%	0.766%	0.823%	0.759%	79.949%	68.825%	28.829%	2.345%
District 6																
*Ascension	96,396	75,703	16,759	1,215	547	2,172	68,836	55,015	11,264	800	383	1,374	57,016	46,180	8,356	2,480
*Assumption	16,243	12,450	3,362	57	162	212	12,337	9,687	2,360	44	108	138	10,198	7,965	2,140	93
*East Baton Rouge	329,268	206,237	101,710	13,102	1,653	6,566	255,845	169,961	69,638	10,096	1,278	4,872	187,896	132,773	46,445	8,678
*Iberville	14,087	9,076	4,752	58	70	131	10,885	7,254	3,431	37	59	104	9,751	6,507	3,125	119
Livingston	128,026	117,601	6,941	906	1,055	1,523	92,696	85,855	4,535	565	782	959	71,580	66,508	2,985	2,087
*St. Charles	26,132	18,245	6,795	357	159	576	19,023	13,645	4,614	223	122	419	15,431	11,275	3,353	803
*St. John the Baptist	17,198	10,870	5,436	284	123	485	12,754	8,465	3,654	203	79	353	10,826	7,179	3,061	586
*St. Martin	1,443	1,399	10	8	21	5	1,163	1,135	4	6	15	3	993	976	0	17
*Tangipahoa	111,256	74,715	33,189	930	774	1,648	83,552	58,941	22,225	691	590	1,105	62,614	45,120	15,537	1,957
*West Baton Rouge	15,570	10,539	4,779	62	55	135	11,789	8,142	3,471	46	44	86	9,538	6,785	2,645	108
District 6	755,619	536,835	183,733	16,979	4,619	13,453	568,880	418,100	125,196	12,711	3,460	9,413	435,843	331,268	87,647	16,928
	100.000%	71.046%	24.316%	2.247%	0.611%	1.780%	100.000%	73.495%	22.007%	2.234%	0.608%	1.655%	76.614%	76.006%	20.110%	3.884%

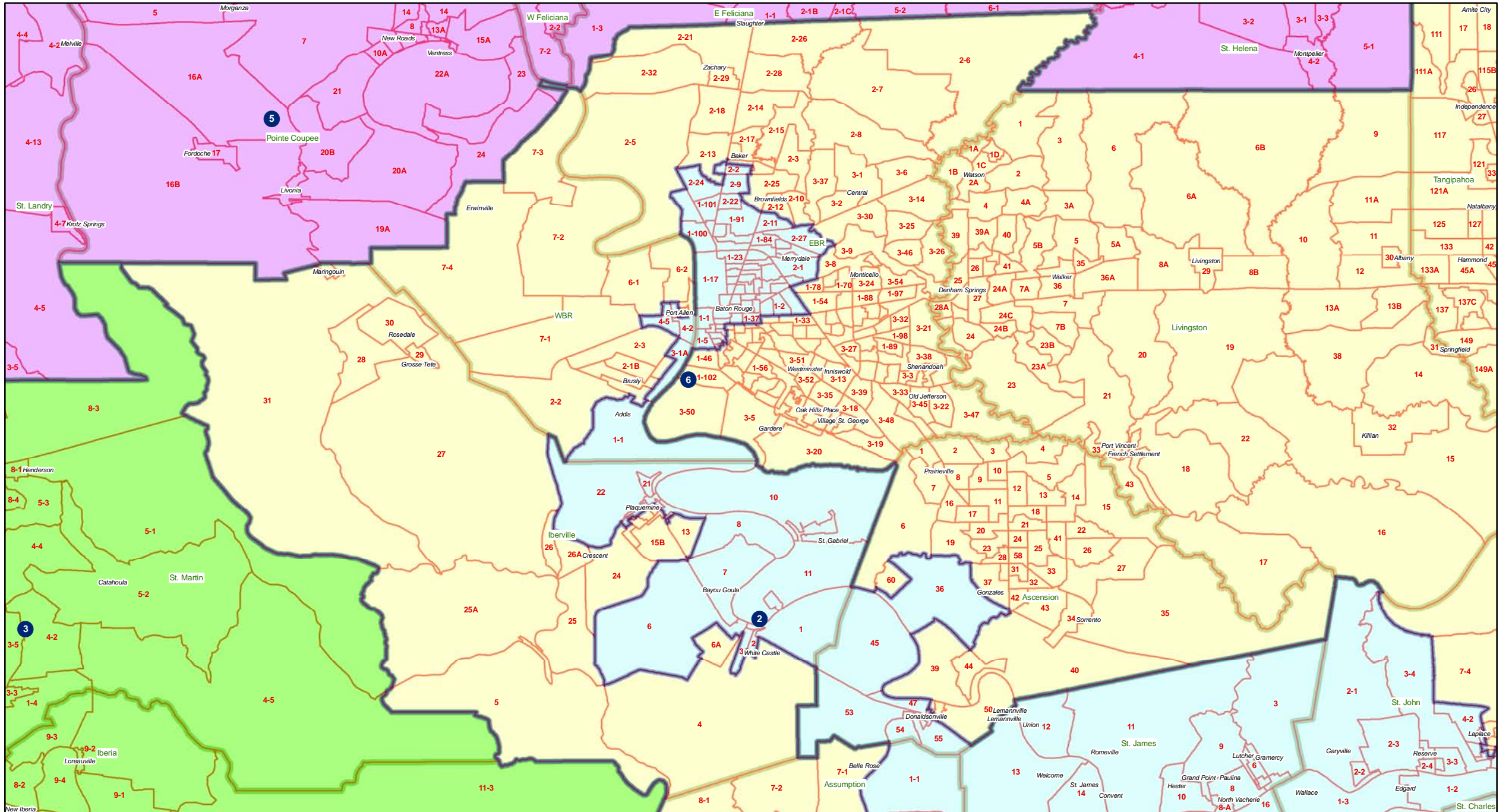
Congress - Statewide



Congress - River area and Florida Parishes



Congress - Baton Rouge area



Congress - Ouachita

