

First Extraordinary Session, 2011

SENATE BILL NO. 22

BY SENATOR MARIONNEAUX

SENATE. Provides for the redistricting of the Louisiana Senate

1  
2  
3  
4  
5  
6  
7  
8  
9  
10  
11  
12  
13  
14  
15  
16  
17

AN ACT

To enact R.S. 24:35 and to repeal R.S. 24:35.1, relative to legislative redistricting; to provide for the redistricting of the Senate of the Legislature of Louisiana; to provide for effective dates; and to provide for related matters.

Be it enacted by the Legislature of Louisiana:

Section 1. R.S. 24:35 is hereby enacted to read as follows:

**§35.Membership of the Senate**

**(A)(1) District 1 is composed of Precincts 9-45A of Orleans Parish; Precincts 31, 33, 34, 40, 41, 42, 43, 44, 45, 46, 50, 51, 52, 53, 54, 55, 56, 57 and 58 of St. Bernard Parish and Precincts 601, 602, 603, 604, 606, 801, 802, 803, 804, 805, 806, 807, 808, 809, 810, 811, 812, 813, 814, 815, 816, 817, 902, 903, 904, 905, 906, 907, 908, 909, 910, 911, 912, 913, 914, 915, 916, 917, 918, 921, P01, S01, S02, S03, S04, S05, S06, S07, S08, S09, S10, S11, S12, S13, S15, S16, S17, S18, S19, S21, S22, S23, S24 and S25 of St. Tammany Parish.**

**(2) District 2 is composed of Precincts 30, 36, 37, 39, 44, 45, 47, 48, 49, 50, 51, 52, 53, 54, 55, 56 and 57 of Ascension Parish; Assumption Parish; Precincts 11-1, 11-2, 11-3, 11-4, 11-5, 12-1, 12-2 and 12-3 of Iberia Parish;**

1 Precincts 1-1, 1-2, 1-3, 1-4, 2-1, 2-1A, 2-2, 2-3, 2-3A, 2-4, 2-4A, 2-5, 2-6, 2-7, 2-8,  
 2 2-9, 2-10, 2-11, 2-12, 2-14, 5-1, 5-1A, 5-1B, 6-1, 6-2, 6-3, 6-4 and 7-2 of Lafourche  
 3 Parish; St. James Parish and Precincts 1-1, 1-2, 1-3, 2-1 and 2-2 of St. John the  
 4 Baptist Parish.

5 (3) District 3 is composed of Precincts 171, 172, 173, 174, 175, 179A,  
 6 179B, 180, 181, 182, 187, 188, 189, 191, 200, 201, 210, 211, 1-G and 2-G of  
 7 Jefferson Parish; Precincts 6-1, 7-25A, 7-35, 7-37, 7-40, 8-1, 8-19, 8-20, 8-21,  
 8 8-22, 8-23, 8-24, 8-25, 8-26, 8-27, 9-1, 9-3, 9-3A, 9-4, 9-5, 9-5A, 9-6B, 9-6C, 9-6D,  
 9 9-6E, 9-6F, 9-7, 9-8, 9-8A, 9-9, 9-10, 9-11, 9-12, 9-13, 9-14, 9-15, 9-16, 9-25, 9-26,  
 10 9-28, 9-28C, 9-28E, 9-29, 9-30, 9-30A, 9-31, 9-31A, 9-31B, 9-32, 9-39, 9-39B, 9-40,  
 11 9-40A, 9-40C, 9-41, 9-41A, 9-41B, 9-41C, 9-41D, 9-43M, 9-44, 9-44I, 9-44L,  
 12 9-44M, 9-44N, 9-44P, 9-44Q, 9-45, 15-1 and 15-5 of Orleans Parish and  
 13 Precincts 10, 11, 12, 13, 14, 15, 16, 20, 21, 22, 23, 24, 25, 30 and 32 of St. Bernard  
 14 Parish.

15 (4) District 4 is composed of Precincts 3-14, 3-19, 3-20, 4-2, 4-5, 4-6, 4-7,  
 16 4-8, 4-9, 4-11, 4-14, 4-15, 4-17, 4-17A, 4-18, 4-20, 4-21, 4-22, 4-23, 5-1, 5-2, 5-3,  
 17 5-4, 5-8, 5-9, 5-10, 5-11, 5-12, 5-13, 5-15, 5-16, 5-17, 5-18, 6-2, 6-4, 6-7, 6-8, 6-9,  
 18 7-1, 7-2, 7-4, 7-5, 7-7, 7-8, 7-9A, 7-12, 7-15, 7-16, 7-17, 7-18, 7-19, 7-23, 7-24,  
 19 7-25, 7-26, 7-27, 7-27B, 7-28, 7-28A, 7-29, 7-30, 7-32, 7-33, 7-34, 7-37A, 7-41,  
 20 7-42, 8-2, 8-4, 8-6, 8-7, 8-8, 8-9, 8-12, 8-13, 8-14, 8-15, 8-28, 8-30, 9-17, 9-19, 9-21,  
 21 9-23, 9-31D, 9-33, 9-34A, 9-35, 9-35A, 9-36, 9-36B, 9-37, 9-38, 9-38A, 9-42,  
 22 9-42C, 9-43A, 9-43B, 9-43C, 9-43E, 9-43F, 9-43G, 9-43H, 9-43I, 9-43J, 9-43K,  
 23 9-43L, 9-43N, 9-44A, 9-44B, 9-44D, 9-44E, 9-44F, 9-44G, 9-44J, 9-44O, 17-17,  
 24 17-18, 17-18A, 17-19 and 17-20 of Orleans Parish.

25 (5) District 5 is composed of Precincts 107, 131 and 133 of Jefferson  
 26 Parish and Precincts 1-1, 1-2, 1-5, 1-6, 2-1, 2-2, 2-3, 2-4, 2-6, 2-6A, 2-7, 3-1, 3-3,  
 27 3-5, 3-8, 3-9, 3-12, 3-15, 3-18, 4-3, 4-4, 5-5, 5-7, 6-6, 7-6, 7-10, 7-11, 7-13, 7-14,  
 28 7-20, 7-21, 10-3, 10-6, 10-7, 10-8, 10-9, 10-11, 10-12, 10-13, 10-14, 11-2, 11-3,  
 29 11-4, 11-5, 11-8, 11-9, 11-10, 11-11, 11-12, 11-13, 11-14, 11-17, 12-1, 12-2, 12-3,

1 12-4, 12-5, 12-6, 12-7, 12-8, 12-9, 12-10, 12-11, 12-12, 12-13, 12-14, 12-16, 12-17,  
2 12-19, 13-1, 13-2, 13-3, 13-4, 13-5, 13-6, 13-7, 13-8, 13-9, 13-10, 13-11, 13-12,  
3 13-13, 13-14, 13-15, 13-16, 14-12, 14-13A, 14-17, 14-18A, 14-19, 14-20, 14-21,  
4 14-23, 14-24A, 14-25, 14-26, 16-2, 16-3, 16-4, 16-5, 16-6, 16-7, 16-8, 16-9, 17-2,  
5 17-3, 17-4, 17-5, 17-6, 17-7, 17-8, 17-9, 17-10, 17-11, 17-12, 17-13, 17-13A, 17-14,  
6 17-15 and 17-16 of Orleans Parish.

7 (6) District 6 is composed of Precincts 1-9, 1-55, 1-60, 1-71, 1-81, 1-87,  
8 1-89, 1-90, 1-98, 2-6, 2-7, 2-8, 3-1, 3-2, 3-6, 3-7, 3-9, 3-10, 3-12, 3-14, 3-21, 3-25,  
9 3-26, 3-28, 3-30, 3-32, 3-37 and 3-46 of East Baton Rouge Parish; Precincts 24,  
10 24A, 24B, 24C, 24D, 25, 26, 26A, 26B, 26C, 27, 28A, 28B, 39, 39A, 40, 40A and  
11 41 of Livingston Parish and St. Helena Parish.

12 (7) District 7 is composed of Precincts 195, 196, 197A, 197B, 197C, 205,  
13 213A, 213B, 213C, 214A, 214B, 225, 226, 232A, 232B, 3-G, 4-G, 5-G, 6-G, 7-G,  
14 8-G, 9-G, 10-G and 11-G of Jefferson Parish; Precincts 15-2, 15-3, 15-6, 15-8,  
15 15-9, 15-10, 15-11, 15-12, 15-12A, 15-13, 15-13A, 15-13B, 15-14, 15-14A, 15-14B,  
16 15-14C, 15-14D, 15-14E, 15-14F, 15-14G, 15-15, 15-15A, 15-15B, 15-16, 15-17,  
17 15-17A, 15-17B, 15-18, 15-18A, 15-18B, 15-18C, 15-18D, 15-18E, 15-18F, 15-19,  
18 15-19A, 15-19B and 15-19C of Orleans Parish and Precincts 2-1, 3-1, 4-1 and 5-2  
19 of Plaquemines Parish.

20 (8) District 8 is composed of Precincts 150, 151, 152, 153, 154, 155, 156,  
21 157A, 157B, 170, 176, 177, 178, 183, 184, 185A, 185B, 190, 192, 193, 194A, 194B,  
22 198, 199, 202, 203, 204, 212A, 212B, 215, 216A, 216B, 217, 227, 228, 229, 230,  
23 231, 234, 235, 236, 237, 238, 246, 247, 248, 12-G, 13-G, 1-GI, 1-L, 1-W, 2-W,  
24 3-W, 4-W, 5-W, 6-W and 7-W of Jefferson Parish and Precincts 1-1, 1-2, 1-3,  
25 1-4, 5-1, 6-1, 6-2, 6-3, 6-4, 7-1, 7-3, 8-1, 9-1 and 9-3 of Plaquemines Parish.

26 (9) District 9 is composed of Precincts 11, 18, 19, 20, 21, 22, 23, 24, 25,  
27 26, 27, 28, 29, 30, 31, 32, 33, 34, 35, 36, 37, 38, 39, 40, 41, 42, 43, 44, 45, 46, 60, 61,  
28 62, 63, 64, 65, 66, 68, 69, 70, 71, 72, 73, 74, 75, 76, 77, 78, 79, 80, 81, 82, 83, 84, 85,  
29 86, 87, 88, 89, 90, 91, 92, 93, 94, 95, 96, 97, 98, 99, 100, 101, 102, 103, 106, 126,

1 127, 128, 129, 130, 132, 134, 136 and 138 of Jefferson Parish and Precincts 14-1,  
2 14-2, 14-3, 14-4, 14-5, 14-6, 14-7, 14-8, 14-9, 14-10, 14-11, 14-14, 14-15, 14-16,  
3 16-1, 16-1A and 17-1 of Orleans Parish.

4 (10) District 10 is composed of Precincts 1, 2, 3, 4, 5, 7, 8, 9, 10, 12, 13,  
5 14, 15, 16, 17, 51, 52, 53, 54, 55, 56, 57, 58, 59, 67, 105, 108, 116, 117, 118, 119,  
6 120, 121, 122, 123, 124, 125, 1-H, 2-H, 3-H, 4-H, 5-H, 6-H, 7-H, 8-H, 9-H, 1-K,  
7 2-K, 3-K, 4-K, 5-K, 6-K, 7-K, 8-K, 9-K, 10-K, 11-K, 12-K, 13-KA, 13-KB, 14-K,  
8 15-K, 16-K, 17-K, 18-K, 19-K, 20-K, 25-K, 27-K, 28-K, 29-K, 30-K, 34-K and  
9 35-K of Jefferson Parish.

10 (11) District 11 is composed of Precincts 101, 102, 103, 104, 105, 106,  
11 107, 304, 305, 306, 307, 308, 309, 310, 311, 312, 313, 401, 402, 403, 404, 405, 406,  
12 407, 408, 409, 410, 411, 412, 413, 414, 415, 416, 417, 418, 419, 420, 421, 422, 423,  
13 424, 426, 427, 605, 607, 701, 702, 703, 704, 705, 706, 901, A01, A02, A03, A04,  
14 C01, C02, C03, C04, C05, C06, C07, C08, C09, C10, C11, M01, M02, M03, M04,  
15 M05, M06, M07, M08, M09, M10 and MD1 of St. Tammany Parish and  
16 Precincts 120, 122, 122A and 145 of Tangipahoa Parish.

17 (12) District 12 is composed of Precincts 201, 202, 203, 204, 205, 206,  
18 207, 301, 302, 303, 501, 502, 503, 504, 505 and F01 of St. Tammany Parish;  
19 Precincts 1, 2, 6, 11, 15, 16, 17, 18, 26, 27, 27A, 28, 28A, 33, 101, 102, 103, 104,  
20 104A, 105, 106, 106A, 106B, 107, 108, 109, 109A, 110, 111, 111A, 112, 114, 115B,  
21 116, 117, 118, 119, 120A, 121 and 123 of Tangipahoa Parish and Washington  
22 Parish.

23 (13) District 13 is composed of Precincts 1, 1A, 1B, 1C, 1D, 2, 2A, 3, 3A,  
24 4, 4A, 5, 5A, 5B, 6, 6A, 6B, 7, 7A, 7B, 8A, 8B, 9, 10, 11, 11A, 12, 29, 30, 35, 35A,  
25 36 and 36A of Livingston Parish and Precincts 40, 40A, 41, 42, 42A, 43, 44, 45,  
26 45A, 46, 47, 48, 49, 70, 70A, 72, 72A, 120B, 121A, 121B, 125, 127, 127A, 129,  
27 129A, 133, 133A, 137, 137A, 137B, 137C, 137D, 139, 141, 141A and 143 of  
28 Tangipahoa Parish.

29 (14) District 14 is composed of Precincts 1-1, 1-3, 1-4, 1-5, 1-6, 1-7, 1-8,

1 1-10, 1-13, 1-14, 1-15, 1-16, 1-17, 1-18, 1-19, 1-21, 1-22, 1-23, 1-24, 1-25, 1-26,  
 2 1-27, 1-28, 1-29, 1-30, 1-31, 1-32, 1-36, 1-37, 1-38, 1-39, 1-40, 1-44, 1-45, 1-46,  
 3 1-48, 1-50, 1-51, 1-57, 1-58, 1-59, 1-61, 1-63, 1-64, 1-65, 1-67, 1-68, 1-73, 1-100,  
 4 1-102, 1-107, 3-5, 3-20, 3-23, 3-44, 3-50 and 3-55 of East Baton Rouge Parish.

5 (15) District 15 is composed of Precincts 1-2, 1-54, 1-62, 1-70, 1-77, 1-78,  
 6 1-82, 1-83, 1-84, 1-85, 1-86, 1-88, 1-91, 1-92, 1-93, 1-94, 1-95, 1-97, 1-101, 1-104,  
 7 2-1, 2-2, 2-3, 2-4, 2-5, 2-9, 2-10, 2-11, 2-12, 2-13, 2-14, 2-15, 2-16, 2-17, 2-18, 2-19,  
 8 2-20, 2-21, 2-22, 2-23, 2-24, 2-25, 2-26, 2-27, 2-28, 2-29, 2-30, 2-31, 2-32, 3-8, 3-24,  
 9 3-42 and 3-54 of East Baton Rouge Parish.

10 (16) District 16 is composed of Precincts 1-12, 1-33, 1-34, 1-35, 1-41,  
 11 1-42, 1-43, 1-47, 1-49, 1-52, 1-53, 1-56, 1-66, 1-69, 1-72, 1-74, 1-75, 1-80, 1-99,  
 12 1-103, 1-105, 3-3, 3-4, 3-11, 3-13, 3-15, 3-16, 3-17, 3-18, 3-19, 3-22, 3-27, 3-29,  
 13 3-31, 3-33, 3-34, 3-35, 3-36, 3-38, 3-39, 3-40, 3-41, 3-43, 3-45, 3-47, 3-48, 3-49,  
 14 3-51, 3-52 and 3-53 of East Baton Rouge Parish.

15 (17) District 17 is composed of East Feliciana Parish; Iberville Parish;  
 16 Pointe Coupee Parish; West Baton Rouge Parish and West Feliciana Parish.

17 (18) District 18 is composed of Precincts 1, 2, 3, 4, 5, 6, 7, 8, 9, 10, 11, 12,  
 18 13, 14, 15, 16, 17, 18, 19, 20, 21, 22, 23, 24, 25, 26, 27, 28, 31, 32, 33, 34, 35, 40, 41,  
 19 42, 43, 58, 60 and 61 of Ascension Parish and Precincts 13A, 13B, 14, 15, 16, 17,  
 20 18, 19, 20, 21, 22, 23, 23A, 23B, 31, 32, 33, 34, 38 and 43 of Livingston Parish.

21 (19) District 19 is composed of Precincts 104, 115, 21-K, 22-K, 23-K,  
 22 24-K, 26-K, 31-K and 33-K of Jefferson Parish; St. Charles Parish; Precincts  
 23 1-4, 1-5, 2-3, 2-4, 3-1, 3-2, 3-3, 3-4, 4-1, 4-2, 4-3, 4-4, 4-8, 4-9, 5-1, 5-2, 5-3, 5-4,  
 24 5-5, 5-6, 5-7, 6-1, 6-3, 6-4, 7-2, 7-3, 7-4, 7-5 and 7-7 of St. John the Baptist Parish  
 25 and Precincts 71, 73, 74, 124, 149, 149A and 151 of Tangipahoa Parish.

26 (20) District 20 is composed of Precincts 2-13, 3-1, 3-2, 3-3, 3-4, 3-5, 3-6,  
 27 4-1, 4-2, 4-3, 4-4, 4-5, 4-6, 5-2, 7-1, 7-3, 7-4, 8-1, 9-1, 9-2, 10-1, 10-2, 10-3, 10-4,  
 28 10-5, 10-6, 10-7, 10-8, 10-9, 10-10, 10-11, 10-12, 10-13, 10-14, 10-15, 10-16, 11-1,  
 29 11-2, 11-3 and 11-4 of Lafourche Parish and Precincts 27, 28, 31, 32, 33, 34, 35,

1 36, 38, 40, 41, 42, 43, 44, 45, 46, 48, 52, 53, 54, 55, 56, 57, 58, 59, 60, 61, 62, 63, 69,  
2 70, 71, 72, 73, 78, 80, 83, 84, 85, 88, 89 and 90 of Terrebonne Parish.

3 (21) District 21 is composed of Precincts 1-2 and 1-5 of St. Martin  
4 Parish; St. Mary Parish and Precincts 1, 4, 5, 7, 8, 9, 10, 11, 12, 13, 14, 15, 17, 18,  
5 19, 20, 21, 23, 24, 25, 29, 47, 49, 51, 64, 65, 66, 67, 68, 74, 76, 81, 82, 86 and 87 of  
6 Terrebonne Parish.

7 (22) District 22 is composed of Precincts 1-1, 1-2, 1-3, 2-1, 2-2, 2-3, 3-1,  
8 3-2, 3-3, 3-4, 4-1, 4-2, 4-3, 4-4, 5-1, 5-2, 5-3, 5-4, 5-5, 6-1, 6-2, 6-3, 6-4, 7-1, 7-2,  
9 7-3, 7-4, 7-5, 8-1, 8-2, 8-4, 8-5, 9-1, 9-2, 9-3, 9-4, 9-5, 10-2, 10-3, 10-4, 10-5, 10-6,  
10 10-7, 12-4, 13-1, 13-2, 13-3, 13-4, 14-1, 14-3 and 14-4 of Iberia Parish; Precincts  
11 1-6, 3-1, 3-3, 3-5, 4-3, 4-5, 4-7, 4-12 and 4-12A of St. Landry Parish and  
12 Precincts 1-1, 1-3, 1-4, 1-7, 2-1, 2-2, 2-3, 2-4, 3-1, 3-1A, 3-1B, 3-2, 3-3, 3-4, 3-4A,  
13 3-5, 3-6, 3-9, 4-1, 4-1A, 4-2, 4-3, 4-4, 4-4A, 4-5, 4-6, 5-1, 5-2, 5-3, 5-4, 6-1, 6-2, 6-3,  
14 6-3A, 6-3B, 6-4, 7-1A, 7-2A, 7-4, 7-4A, 8-1, 8-3, 8-4, 8-4A, 9-1, 9-2, 9-3, 9-4 and  
15 9-5 of St. Martin Parish.

16 (23) District 23 is composed of Precincts 32, 33, 38, 39, 40, 41, 42, 43, 44,  
17 45, 46, 47, 48, 49, 65, 66, 67, 69, 70, 72, 73, 74, 75, 76, 77, 78, 79, 80, 81, 82, 83, 84,  
18 85, 86, 87, 88, 89, 90, 91, 92, 93, 94, 95, 96, 97A, 97B, 98, 99, 100, 101, 102, 103,  
19 104, 105, 106, 107, 108, 109, 110 and 111 of Lafayette Parish.

20 (24) District 24 is composed of Precincts 2, 4, 5, 6, 7, 9, 11, 12, 13, 14, 15,  
21 16, 17, 18, 19, 20, 21, 22, 23, 24, 50, 51, 52, 53, 54, 55, 56, 57, 58, 59, 60, 61, 62, 63,  
22 64 and 68 of Lafayette Parish; Precincts 1-1, 1-2, 1-2A, 1-3, 1-3A, 1-4, 1-4A, 1-5,  
23 1-7, 1-8, 1-9, 1-10, 1-11, 1-12, 1-13, 1-14, 1-15, 1-15A, 1-16, 1-17, 1-18, 1-19, 1-20,  
24 1-21, 1-22, 1-23, 1-24, 1-25, 1-26, 1-26A, 1-28, 1-28A, 1-29, 2-1, 2-4, 2-7, 3-2, 3-4,  
25 3-6, 4-4, 4-6, 4-8, 4-9, 4-10, 4-11, 5-1, 5-3, 5-5, 5-6, 5-8, 6-3, 6-11 and 6-11A of St.  
26 Landry Parish and Precincts 6-2A, 7-1 and 7-3 of St. Martin Parish.

27 (25) District 25 is composed of Precincts 2-2, 2-4, 2-5, 3-2, 3-5, 3-6, 4-1,  
28 4-2, 4-3, 4-4, 4-5, 4-6, 5-1A, 5-1B, 5-2A, 5-2B, 5-3, 5-4, 5-5, 6-1, 6-2, 6-3A, 6-3B,  
29 6-4, 6-5, 6-6, 6-7, 6-8, 6-9, 6-11, 6-12, 6-13, 6-15, 6-16, 7-2, 7-3 and 7-4 of Acadia

1 Parish; Precincts 260, 261, 262, 336, 337, 338, 339, 364, 365, 366, 367N, 367S,  
 2 368, 369, 370, 371N, 371S, 800, 801, 860N, 860S, 861E and 861W of Calcasieu  
 3 Parish; Cameron Parish and Jefferson Davis Parish.

4 (26) District 26 is composed of Precincts 1-1, 1-2A, 1-2B, 1-3A, 1-3B,  
 5 1-4A, 1-4B, 1-5A, 1-5B, 1-6, 1-7, 1-8, 1-9, 2-1, 2-3, 3-1, 3-3A, 3-3B, 3-4, 3-7, 6-10  
 6 and 6-14 of Acadia Parish; Precincts 1, 3, 8, 10, 25, 26, 27, 28A, 28B, 29, 30A, 31,  
 7 34, 35, 36, 37 and 71 of Lafayette Parish and Vermilion Parish.

8 (27) District 27 is composed of Precincts 162E, 163, 165, 166, 167, 300,  
 9 301, 302, 303, 304, 305, 306, 307, 308, 309E, 309W, 310, 311, 312, 313E, 313W,  
 10 314, 315E, 315W, 316E, 316W, 317, 318, 319, 320, 321, 322, 323, 324, 325, 326,  
 11 327, 328, 329, 330, 331, 332N, 332S, 333, 334, 335, 360, 361, 362, 363, 400, 401,  
 12 402, 403, 404, 405, 406, 407, 408, 440, 441, 461, 462, 463, 464 and 467 of  
 13 Calcasieu Parish.

14 (28) District 28 is composed of Allen Parish; Precincts 2-2C, 2-4A, 2-4B,  
 15 2-4D, 2-5C, 2-7, 2-8, 3-1A, 3-1B, 3-1C, 3-3A, 4-1, 4-2, 7-1, 7-2, 7-3, 7-3A, 8-1,  
 16 8-2A, 8-2B, 8-3A, 9-1A, 9-1C, 9-2, 9-3A, 9-4A, 9-5C, 9-6A, 9-6B, 10-2B, 10-2C,  
 17 10-3A, 10-3D, 10-4 and 10-5C of Avoyelles Parish; Evangeline Parish and  
 18 Precincts 2-2, 2-3, 2-5, 2-6, 2-8, 2-9, 4-2, 4-13, 5-2, 5-4, 6-1, 6-2, 6-4, 6-5, 6-6, 6-7,  
 19 6-8, 6-9, 6-10, 6-13, 6-14, 6-15, 6-16 and 6-16A of St. Landry Parish.

20 (29) District 29 is composed of Precincts C22, C23, C26, C27, C30, C31,  
 21 C32, C33, C34, C35, C36, C37, C41, C42, N1, N2, N3, N4, N5, N6, N7, N8, N9,  
 22 N10, N11, N12, N13, N14, N15, N16, N17, N18, N19, N20, N21, N28, N29, S7,  
 23 S10, S11, S13, S14, S15, S16, S17, S18, S19, S20, S21, S22, S23, S24, S25, S26,  
 24 S27, S28 and S29 of Rapides Parish; Sabine Parish and Precincts 1-9, 2-1, 2-1A,  
 25 2-2, 2-2A, 2-3, 2-3A, 5-1, 5-1A, 5-2, 6-1, 6-2, 6-3, 6-4, 8-1, 8-2 and 8-3 of Vernon  
 26 Parish.

27 (30) District 30 is composed of Beauregard Parish; Precincts 160E,  
 28 160W, 161, 162W, 164, 460E, 460W, 465, 466E, 466W, 468, 469, 560, 561, 562,  
 29 600, 601, 602, 603, 660, 661, 662, 663, 664, 700, 701, 702, 703, 760, 761 and 762

1 of Calcasieu Parish and Precincts 1-1, 1-1B, 1-2, 1-2A, 1-3, 1-3B, 1-3C, 1-3D,  
 2 1-4, 1-4A, 1-4B, 1-4C, 1-4D, 1-5, 1-5A, 1-6, 1-6A, 1-6B, 1-7, 1-7A, 1-7B, 1-8,  
 3 1-8A, 1-8C, 1-8E, 1-8F, 2-4, 2-4E, 3-1, 3-2, 3-3, 3-4, 3-5, 4-1, 4-2, 4-3, 4-3A, 4-3C,  
 4 4-3E, 4-3F, 4-3G, 4-3J, 4-3K, 4-3L, 4-3M, 4-3N, 5-2A, 7-1, 7-2, 7-2A, 7-3, 7-4,  
 5 7-4A, 7-5, 7-5A and 7-5C of Vernon Parish.

6 (31) District 31 is composed of Bienville Parish; Precincts 1-1, 1-2, 1-3,  
 7 2-1, 2-2, 3-1, 3-3, 6-3, 9-1, 10-1, 10-2, 10-3, 10-5, 11-1, 11-2, 11-3 and 12-1 of  
 8 Lincoln Parish; Precincts 1-1, 1-3, 1-3A, 1-4, 1-4A, 1-4B, 1-5, 1-5A, 1-8, 1-10A,  
 9 1-13, 3-1, 3-2, 3-3, 3-4, 3-5, 3-6, 3-7, 3-8, 3-9, 3-10, 4-1, 4-2, 4-3, 4-4, 4-5, 4-6, 4-7,  
 10 4-8 and 4-9 of Natchitoches Parish; Precincts C1, C2, C3, C4, C5, C6, C7, C8,  
 11 C9, C10, C11, C13, C14, C15, C17, C18, C19, C20, C21, C24, C25, C28, C38,  
 12 C39, C40, S1, S2, S4, S5, S6, S8 and S9 of Rapides Parish and Red River Parish.

13 (32) District 32 is composed of Precincts 1-1, 1-2, 2-1A, 2-2A, 2-2B, 2-3A,  
 14 2-5A, 2-5B, 3-3D, 5-1, 5-2, 6-1A, 6-2A, 11-1 and 11-2A of Avoyelles Parish;  
 15 Caldwell Parish; Catahoula Parish; Concordia Parish; Franklin Parish; La  
 16 Salle Parish; Precincts 25, 26, 57 and 58 of Ouachita Parish; Precincts N22, N23,  
 17 N24, N25, N26 and N27 of Rapides Parish and Precincts 1, 2, 3, 4, 5, 6, 7, 8, 9  
 18 and 10 of Richland Parish.

19 (33) District 33 is composed of Precincts 3-2, 3-4, 3-5, 4-1, 4-2, 4-3, 4-4,  
 20 4-5, 5-1, 5-2, 5-3, 5-4, 6-1, 6-2, 6-4, 6-5, 7-1, 7-2, 8-1, 8-2, 8-3, 9-2, 9-3, 10-4 and  
 21 12-2 of Lincoln Parish; Precincts 4, 6, 23, 25, 26, 27, 28, 29, 30, 35, 38, 39, 40, 41,  
 22 42, 43, 44, 45, 47, 48, 49, 50 and 51 of Morehouse Parish; Precincts 1, 2, 4, 5, 6,  
 23 7, 8, 35, 36, 37, 41, 43, 44, 44A, 49, 50, 59, 60, 64, 75 and 76 of Ouachita Parish;  
 24 Union Parish and West Carroll Parish.

25 (34) District 34 is composed of East Carroll Parish; Madison Parish;  
 26 Precincts 1, 2, 3, 5, 7, 8, 9, 10, 12, 13, 14, 15, 16, 17, 18, 20, 21, 22, 24, 31, 33, 34,  
 27 36, 37, 52, 53, 54 and 55 of Morehouse Parish; Precincts 3, 9, 9A, 10, 11, 12, 13,  
 28 14, 15, 16, 17, 18, 19, 20, 21, 22, 23, 24, 27, 28, 29, 30, 63, 65, 66, 67, 68, 69, 70, 72,  
 29 73, 74 and 79 of Ouachita Parish; Precincts 11, 12, 13, 14, 15, 16, 17, 18, 19, 20,



1 21, 22, 23, 24, 25, 26, 27, 28, 29, 30, 31, 32, 33, 34 and 35 of Richland Parish and  
2 Tensas Parish.

3 (35) District 35 is composed of Grant Parish; Jackson Parish; Precincts  
4 1-1A, 1-2, 1-6, 1-7, 1-9, 1-9A, 1-10, 1-10B, 1-11, 1-12, 1-14, 2-1, 2-2, 2-3, 2-4, 2-5,  
5 2-6, 2-7, 2-7A, 2-8 and 2-9 of Natchitoches Parish; Precincts 31, 32, 33, 34, 38,  
6 39, 40, 42, 45, 46, 47, 48, 51, 52, 53, 54, 55, 56, 61, 62, 71, 77 and 78 of Ouachita  
7 Parish and Winn Parish.

8 (36) District 36 is composed of Precincts 2-1, 2-17A, 2-18A, 2-18B,  
9 2-18C, 2-21B, 2-21C, 2-21D, 2-22A, 2-22B, 3-1, 3-2, 3-3, 3-4, 4-1A, 4-2, 4-3A,  
10 4-3B, 4-3C, 4-4A, 4-4B, 4-5A, 4-6, 4-7, 4-9, 4-11A, 4-11B and 4-11C of Bossier  
11 Parish; Claiborne Parish and Webster Parish.

12 (37) District 37 is composed of Precincts 1-1, 1-2, 1-3, 1-3A, 1-4, 1-4A,  
13 1-5, 2-2, 2-3, 2-4, 2-5, 2-6, 2-7, 2-8, 2-9, 2-10, 2-11, 2-11A, 2-12A, 2-12B, 2-12C,  
14 2-13, 2-14, 2-15, 2-16, 2-16A, 2-17B, 2-19, 2-20, 2-21A, 2-23, 4-8A, 4-8B, 4-8C,  
15 4-8D and 4-10 of Bossier Parish and Precincts 6, 7, 8, 9, 10, 11, 12, 13, 14, 15, 16,  
16 17, 20, 21, 22, 24, 26, 27, 48, 49, 64, 68, 72, 76, 77, 99, 102 and 129 of Caddo  
17 Parish.

18 (38) District 38 is composed of Precincts 4, 52, 56, 62, 63, 65, 66, 69, 75,  
19 78, 79, 84, 85, 87, 88, 89, 90, 91, 92, 93, 94, 95, 97, 100, 101, 103, 104, 105, 107,  
20 108, 109, 110, 122, 123, 125, 126, 127, 128, 132, 133, 134 and 159 of Caddo  
21 Parish and De Soto Parish.

22 (39) District 39 is composed of Precincts 1, 2, 3, 5, 23, 25, 28, 29, 30, 31,  
23 32, 34, 35, 36, 37, 38, 39, 40, 41, 42, 43, 44, 45, 46, 47, 50, 51, 53, 54, 55, 57, 58, 59,  
24 60, 61, 67, 70, 71, 73, 74, 80, 81, 82, 83, 86, 98, 106, 130, 135, 136, 137, 138, 139,  
25 140, 142, 143, 144, 145, 146, 149, 150, 151, 154, 155, 156, 157 and 158 of Caddo  
26 Parish.

27 (B)The precincts referenced in this Act are those precincts identified as  
28 Voting Districts (VTDs) in the 2010 Census Redistricting TIGER/Line  
29 Shapefiles for the State of Louisiana.

1                    **(C) When a precinct referenced in this Act has been subdivided by action**  
2                    **of the parish governing authority on a nongeographic basis or subdivided by**  
3                    **action of the parish governing authority on a geographic basis in accordance**  
4                    **with the provisions of R.S. 18:532.1, the enumeration in this Act of the general**  
5                    **precinct designation shall include all nongeographic and all geographic**  
6                    **subdivisions thereof, however such subdivisions may be designated. The**  
7                    **territorial limits of the districts as provided in this Act shall continue in effect**  
8                    **without change regardless of any changes made to the precincts by the parish**  
9                    **governing authority.**

10                  Section 2. (A) The provisions of Section 1 of this Act shall be effective for the  
11                  limited purposes of qualifying candidates for and electing members to the Senate of the  
12                  Legislature of Louisiana at the next regularly scheduled election for members of the Senate  
13                  in 2012, commencing on the date and at the time that the qualifying period opens for such  
14                  offices. The effectiveness of Section 1 of this Act for such qualification and election shall  
15                  not reduce the term of office of any member of the Senate nor change any Senate district as  
16                  established in R.S. 24:35.1 until such provisions of law are repealed pursuant to Section 4  
17                  of this Act.

18                  (B) Except as provided in Subsection A of this Section, the provisions of Section 1  
19                  of this Act shall be effective at 10:00 a.m. on the second Monday in January, 2012.

20                  Section 3. A vacancy in the office of a member elected to serve a term of office  
21                  commencing at 10:00 a.m. on the second Monday in January, 2012, shall be filled, as  
22                  required by law from the district created by Section 1 of this Act from which the member  
23                  was elected.

24                  Section 4. R.S. 24:35.1 is hereby repealed, effective at 10:00 a.m., January 9, 2012.

25                  Section 5. This Act shall become effective upon signature by the governor or, if not  
26                  signed by the governor, upon expiration of the time for bills to become law without signature  
27                  by the governor, as provided by Article III, Section 18 of the Constitution of Louisiana. If  
28                  vetoed by the governor and subsequently approved by the legislature, this Act shall become  
29                  effective on the day following such approval.

The original instrument and the following digest, which constitutes no part of the legislative instrument, were prepared by Sue Morain.

---

DIGEST

Proposed law redistricts the thirty-nine present La. State Senate districts.

Effective upon signature of the governor or lapse of time for gubernatorial action.

(Adds R.S. 24:35; repeals R.S. 24:35.1)

# Plan Statistics

<u>Districts:</u>	<u># of Members</u>	<u>Actual Population</u>	<u>Ideal Population</u>	<u>Absolute Deviation</u>	<u>Relative Deviation</u>
District 1	1	115,748	116,240	-492	-0.423%
District 2	1	113,649	116,240	-2,591	-2.229%
District 3	1	110,749	116,240	-5,491	-4.724%
District 4	1	110,743	116,240	-5,497	-4.729%
District 5	1	110,517	116,240	-5,723	-4.923%
District 6	1	120,697	116,240	4,457	3.834%
District 7	1	110,828	116,240	-5,412	-4.656%
District 8	1	119,482	116,240	3,242	2.789%
District 9	1	121,407	116,240	5,167	4.445%
District 10	1	120,800	116,240	4,560	3.923%
District 11	1	120,391	116,240	4,151	3.571%
District 12	1	115,344	116,240	-896	-0.771%
District 13	1	121,782	116,240	5,542	4.768%
District 14	1	121,462	116,240	5,222	4.492%
District 15	1	121,366	116,240	5,126	4.410%
District 16	1	120,648	116,240	4,408	3.792%
District 17	1	115,869	116,240	-371	-0.319%
District 18	1	119,199	116,240	2,959	2.546%
District 19	1	115,879	116,240	-361	-0.311%
District 20	1	118,088	116,240	1,848	1.590%
District 21	1	111,488	116,240	-4,752	-4.088%
District 22	1	121,483	116,240	5,243	4.510%
District 23	1	121,444	116,240	5,204	4.477%
District 24	1	114,911	116,240	-1,329	-1.143%
District 25	1	117,663	116,240	1,423	1.224%
District 26	1	121,960	116,240	5,720	4.921%
District 27	1	116,204	116,240	-36	-0.031%
District 28	1	114,190	116,240	-2,050	-1.764%
District 29	1	110,697	116,240	-5,543	-4.769%
District 30	1	110,972	116,240	-5,268	-4.532%
District 31	1	111,482	116,240	-4,758	-4.093%
District 32	1	111,329	116,240	-4,911	-4.225%
District 33	1	113,952	116,240	-2,288	-1.968%
District 34	1	113,548	116,240	-2,692	-2.316%
District 35	1	120,395	116,240	4,155	3.575%
District 36	1	114,211	116,240	-2,029	-1.746%
District 37	1	112,721	116,240	-3,519	-3.027%
District 38	1	116,670	116,240	430	0.370%
District 39	1	113,404	116,240	-2,836	-2.440%

---

<b>Grand Total:</b>	<b>39</b>	<b>4,533,372</b>	<b>4,533,360</b>
---------------------	-----------	------------------	------------------

---

Ideal Population Per Member:	116240
Number of Districts for Plan Type:	39
Range of District Populations:	110,517 to 121,960
Absolute Mean Deviation:	293
Absolute Range:	-5,723 to 5,720
Absolute Overall Range:	11,443
Relative Mean Deviation:	3.04%
Relative Range:	-4.92% to 4.92%
Relative Overall Range:	9.84%

<b><i>Ideal - Actual:</i></b>	<b>-12</b>
<b><i>Remainder:</i></b>	<b>12</b>
<b><i>Unassigned Population:</i></b>	<b>0</b>

# Total Population

	Total Population	Total White	Total Black	Total Asian	Total American Indian	Total Other	Total Hispanic	Reg Total Jan 2011
District 1	115,748	88,351	21,430	2,238	1,314	2,415	6,286	69,695
	100.000%	76.330%	18.514%	1.934%	1.135%	2.086%	5.431%	80.739%
District 2	113,649	62,630	48,680	570	653	1,116	2,364	71,709
	100.000%	55.108%	42.834%	0.502%	0.575%	0.982%	2.080%	84.526%
District 3	110,749	35,122	64,544	7,336	868	2,879	6,322	68,541
	100.000%	31.713%	58.280%	6.624%	0.784%	2.600%	5.708%	81.874%
District 4	110,743	34,331	72,402	1,476	441	2,093	5,054	68,626
	100.000%	31.001%	65.378%	1.333%	0.398%	1.890%	4.564%	80.121%
District 5	110,517	45,044	59,649	2,366	626	2,832	7,323	68,736
	100.000%	40.758%	53.973%	2.141%	0.566%	2.563%	6.626%	74.921%
District 6	120,697	86,657	28,229	2,888	796	2,127	4,383	72,346
	100.000%	71.797%	23.388%	2.393%	0.660%	1.762%	3.631%	79.608%
District 7	110,828	39,343	62,132	3,939	782	4,632	10,167	59,726
	100.000%	35.499%	56.062%	3.554%	0.706%	4.179%	9.174%	73.394%
District 8	119,482	67,740	39,153	6,720	1,604	4,265	10,383	72,551
	100.000%	56.695%	32.769%	5.624%	1.342%	3.570%	8.690%	81.102%
District 9	121,407	98,411	12,604	4,147	737	5,508	14,207	73,293
	100.000%	81.059%	10.382%	3.416%	0.607%	4.537%	11.702%	73.936%
District 10	120,800	93,101	15,193	4,964	746	6,796	19,524	71,003
	100.000%	77.070%	12.577%	4.109%	0.618%	5.626%	16.162%	74.328%
District 11	120,391	105,517	10,296	1,772	1,054	1,752	5,502	76,009
	100.000%	87.645%	8.552%	1.472%	0.875%	1.455%	4.570%	86.090%
District 12	115,344	81,470	31,270	518	843	1,243	3,231	66,853
	100.000%	70.632%	27.110%	0.449%	0.731%	1.078%	2.801%	77.533%
District 13	121,782	95,270	23,075	1,049	863	1,525	3,992	66,261
	100.000%	78.230%	18.948%	0.861%	0.709%	1.252%	3.278%	73.844%
District 14	121,462	43,115	71,721	4,330	465	1,831	4,392	61,598
	100.000%	35.497%	59.048%	3.565%	0.383%	1.507%	3.616%	64.789%
District 15	121,366	26,967	90,177	1,818	442	1,962	3,776	68,467
	100.000%	22.220%	74.302%	1.498%	0.364%	1.617%	3.111%	78.551%
District 16	120,648	92,481	20,775	4,860	536	1,996	5,161	76,890
	100.000%	76.654%	17.220%	4.028%	0.444%	1.654%	4.278%	80.418%
District 17	115,869	63,469	50,746	416	435	803	2,159	70,919
	100.000%	54.777%	43.796%	0.359%	0.375%	0.693%	1.863%	78.751%
District 18	119,199	101,302	13,567	1,298	798	2,234	4,990	70,284
	100.000%	84.986%	11.382%	1.089%	0.669%	1.874%	4.186%	81.912%
District 19	115,879	65,572	45,690	1,096	736	2,785	6,747	68,660
	100.000%	56.587%	39.429%	0.946%	0.635%	2.403%	5.822%	81.123%
District 20	118,088	89,331	15,574	1,169	8,687	3,327	5,235	62,994
	100.000%	75.648%	13.188%	0.990%	7.356%	2.817%	4.433%	71.849%
District 21	111,488	73,772	30,090	1,772	3,128	2,726	5,133	62,137
	100.000%	66.170%	26.989%	1.589%	2.806%	2.445%	4.604%	74.794%
District 22	121,483	82,997	33,610	2,386	753	1,737	3,165	77,060
	100.000%	68.320%	27.666%	1.964%	0.620%	1.430%	2.605%	86.500%
District 23	121,444	100,524	15,136	3,054	755	1,975	4,696	72,617
	100.000%	82.774%	12.463%	2.515%	0.622%	1.626%	3.867%	77.131%
District 24	114,911	45,832	66,576	582	576	1,345	2,522	74,230
	100.000%	39.885%	57.937%	0.506%	0.501%	1.170%	2.195%	88.728%
District 25	117,663	96,244	18,158	1,196	899	1,166	2,366	71,885
	100.000%	81.796%	15.432%	1.016%	0.764%	0.991%	2.011%	82.854%
District 26	121,960	95,108	22,331	1,833	713	1,975	4,031	71,067
	100.000%	77.983%	18.310%	1.503%	0.585%	1.619%	3.305%	79.815%
District 27	116,204	71,396	40,966	1,467	858	1,517	3,275	72,068
	100.000%	61.440%	35.254%	1.262%	0.738%	1.305%	2.818%	82.880%
District 28	114,190	77,212	33,842	610	1,511	1,015	2,118	65,786
	100.000%	67.617%	29.637%	0.534%	1.323%	0.889%	1.855%	77.008%
District 29	110,697	87,008	16,835	1,503	4,028	1,323	3,606	65,759
	100.000%	78.600%	15.208%	1.358%	3.639%	1.195%	3.258%	78.878%
District 30	110,972	89,261	15,750	1,847	1,857	2,257	5,116	55,612
	100.000%	80.436%	14.193%	1.664%	1.673%	2.034%	4.610%	68.603%
District 31	111,482	41,367	66,853	1,014	1,186	1,062	1,986	62,869
	100.000%	37.106%	59.968%	0.910%	1.064%	0.953%	1.781%	75.334%
District 32	111,329	83,964	25,634	331	908	492	1,461	68,779
	100.000%	75.420%	23.025%	0.297%	0.816%	0.442%	1.312%	82.101%
District 33	113,952	88,123	22,436	1,397	566	1,430	2,741	72,222
	100.000%	77.333%	19.689%	1.226%	0.497%	1.255%	2.405%	82.362%
District 34	113,548	34,586	77,224	691	405	642	1,595	69,802
	100.000%	30.459%	68.010%	0.609%	0.357%	0.565%	1.405%	84.662%
District 35	120,395	94,110	23,238	856	1,193	998	2,894	71,927
	100.000%	78.168%	19.301%	0.711%	0.991%	0.829%	2.404%	78.250%

# Total Population

	Total Population	Total White	Total Black	Total Asian	Total American Indian	Total Other	Total Hispanic	Reg Total Jan 2011
District 36	114,211	79,472	31,819	961	980	979	2,754	65,216
	100.000%	69.583%	27.860%	0.841%	0.858%	0.857%	2.411%	75.325%
District 37	112,721	76,978	28,266	3,030	1,014	3,433	7,026	59,933
	100.000%	68.291%	25.076%	2.688%	0.900%	3.046%	6.233%	69.129%
District 38	116,670	70,046	42,678	1,593	1,137	1,216	3,092	70,327
	100.000%	60.038%	36.580%	1.365%	0.975%	1.042%	2.650%	79.900%
District 39	113,404	32,968	78,536	458	660	782	1,785	65,918
	100.000%	29.071%	69.253%	0.404%	0.582%	0.690%	1.574%	79.150%
Grand Total	4,533,372	2,836,192	1,486,885	81,551	46,553	82,191	192,560	2,680,375
	100.000%	62.563%	32.799%	1.799%	1.027%	1.813%	4.248%	78.480%

# Voter Registration

	Reg Total Jan 2011	Reg White Jan 2011	Reg Black Jan 2011	Reg Other Jan 2011	Reg Dem Total Jan 2011	Reg Rep Total Jan 2011	Reg Other Total Jan 2011
District 1	69,695	54,933	10,552	4,210	26,370	24,275	19,050
	80.739%	78.819%	15.140%	6.041%	37.836%	34.830%	27.333%
District 2	71,709	40,643	29,894	1,172	48,196	11,429	12,084
	84.526%	56.678%	41.688%	1.634%	67.211%	15.938%	16.851%
District 3	68,541	22,743	40,087	5,711	45,473	7,189	15,879
	81.874%	33.182%	58.486%	8.332%	66.344%	10.489%	23.167%
District 4	68,626	21,739	43,064	3,823	46,682	7,998	13,946
	80.121%	31.677%	62.752%	5.571%	68.024%	11.654%	20.322%
District 5	68,736	26,838	36,598	5,300	43,767	7,913	17,056
	74.921%	39.045%	53.244%	7.711%	63.674%	11.512%	24.814%
District 6	72,346	56,773	13,003	2,570	29,904	26,361	16,081
	79.608%	78.474%	17.973%	3.552%	41.335%	36.437%	22.228%
District 7	59,726	23,286	31,424	5,016	35,390	10,126	14,210
	73.394%	38.988%	52.614%	8.398%	59.254%	16.954%	23.792%
District 8	72,551	43,390	22,260	6,901	37,243	15,826	19,482
	81.102%	59.806%	30.682%	9.512%	51.334%	21.814%	26.853%
District 9	73,293	63,480	4,395	5,418	25,510	29,962	17,821
	73.936%	86.611%	5.996%	7.392%	34.806%	40.880%	24.315%
District 10	71,003	57,453	6,081	7,469	24,466	28,960	17,577
	74.328%	80.916%	8.564%	10.519%	34.458%	40.787%	24.755%
District 11	76,009	67,126	4,757	4,126	19,294	37,650	19,065
	86.090%	88.313%	6.258%	5.428%	25.384%	49.534%	25.083%
District 12	66,853	49,424	15,723	1,706	34,495	18,026	14,332
	77.533%	73.929%	23.519%	2.552%	51.598%	26.964%	21.438%
District 13	66,261	53,809	10,359	2,093	26,948	21,723	17,590
	73.844%	81.208%	15.634%	3.159%	40.669%	32.784%	26.547%
District 14	61,598	19,515	39,298	2,785	38,452	9,771	13,375
	64.789%	31.681%	63.798%	4.521%	62.424%	15.863%	21.713%
District 15	68,467	17,851	48,462	2,154	47,930	8,486	12,051
	78.551%	26.072%	70.782%	3.146%	70.005%	12.394%	17.601%
District 16	76,890	64,552	8,467	3,871	24,100	35,347	17,443
	80.418%	83.954%	11.012%	5.034%	31.343%	45.971%	22.686%
District 17	70,919	41,319	28,238	1,362	45,770	12,886	12,263
	78.751%	58.262%	39.817%	1.921%	64.538%	18.170%	17.292%
District 18	70,284	60,931	6,588	2,765	28,116	23,391	18,777
	81.912%	86.693%	9.373%	3.934%	40.003%	33.281%	26.716%
District 19	68,660	41,096	24,598	2,966	35,965	16,501	16,194
	81.123%	59.854%	35.826%	4.320%	52.381%	24.033%	23.586%
District 20	62,994	52,159	7,348	3,487	31,965	15,090	15,939
	71.849%	82.800%	11.665%	5.535%	50.743%	23.955%	25.302%
District 21	62,137	43,770	15,773	2,594	29,384	16,818	15,935
	74.794%	70.441%	25.384%	4.175%	47.289%	27.066%	25.645%
District 22	77,060	55,078	19,775	2,207	41,735	19,403	15,922
	86.500%	71.474%	25.662%	2.864%	54.159%	25.179%	20.662%
District 23	72,617	63,351	5,969	3,297	22,159	31,576	18,882
	77.131%	87.240%	8.220%	4.540%	30.515%	43.483%	26.002%
District 24	74,230	30,982	41,215	2,033	47,152	12,069	15,009
	88.728%	41.738%	55.523%	2.739%	63.521%	16.259%	20.220%
District 25	71,885	60,503	9,777	1,605	38,060	17,108	16,717
	82.854%	84.166%	13.601%	2.233%	52.946%	23.799%	23.255%
District 26	71,067	58,108	11,227	1,732	37,712	16,496	16,859
	79.815%	81.765%	15.798%	2.437%	53.065%	23.212%	23.723%
District 27	72,068	46,174	23,444	2,450	38,039	16,873	17,156
	82.880%	64.070%	32.530%	3.400%	52.782%	23.413%	23.805%
District 28	65,786	47,083	17,387	1,316	42,209	11,636	11,941
	77.008%	71.570%	26.430%	2.000%	64.161%	17.688%	18.151%
District 29	65,759	55,431	7,487	2,841	29,675	21,367	14,717
	78.878%	84.294%	11.386%	4.320%	45.127%	32.493%	22.380%
District 30	55,612	47,039	6,101	2,472	25,245	15,146	15,221
	68.603%	84.584%	10.971%	4.445%	45.395%	27.235%	27.370%
District 31	62,869	25,135	35,863	1,871	40,188	10,286	12,395
	75.334%	39.980%	57.044%	2.976%	63.923%	16.361%	19.716%
District 32	68,779	54,313	13,500	966	36,963	18,452	13,364
	82.101%	78.967%	19.628%	1.404%	53.742%	26.828%	19.430%
District 33	72,222	58,585	11,583	2,054	28,064	28,775	15,383
	82.362%	81.118%	16.038%	2.844%	38.858%	39.842%	21.300%
District 34	69,802	21,599	46,469	1,734	45,638	10,452	13,712
	84.662%	30.943%	66.573%	2.484%	65.382%	14.974%	19.644%
District 35	71,927	58,394	11,633	1,900	30,648	24,486	16,793
	78.250%	81.185%	16.173%	2.642%	42.610%	34.043%	23.347%

# Voter Registration

	Reg Total Jan 2011	Reg White Jan 2011	Reg Black Jan 2011	Reg Other Jan 2011	Reg Dem Total Jan 2011	Reg Rep Total Jan 2011	Reg Other Total Jan 2011
District 36	65,216	47,414	16,161	1,641	27,579	22,829	14,808
	75.325%	72.703%	24.781%	2.516%	42.289%	35.005%	22.706%
District 37	59,933	44,958	12,133	2,842	21,981	23,368	14,584
	69.129%	75.014%	20.244%	4.742%	36.676%	38.990%	24.334%
District 38	70,327	44,738	22,917	2,672	33,325	22,667	14,335
	79.900%	63.614%	32.586%	3.799%	47.386%	32.231%	20.383%
District 39	65,918	19,402	44,467	2,049	43,194	9,473	13,251
	79.150%	29.434%	67.458%	3.108%	65.527%	14.371%	20.102%
<b>Grand Total</b>	<b>2,680,375</b>	<b>1,761,117</b>	<b>804,077</b>	<b>115,181</b>	<b>1,354,986</b>	<b>718,190</b>	<b>607,199</b>



# Splits

	Total Population	Total White	Total Black	Total Asian	Total American Indian	Total Other	VAP Total	VAP White	VAP Black	VAP Asian	VAP American Indian	VAP Other	Reg Total Jan 2011	Reg White Jan 2011	Reg Black Jan 2011	Reg Other Jan 2011
District 1																
*Orleans	123	119	2	1	0	1	114	110	2	1	0	1	66	61	1	4
*St. Bernard	18,224	13,176	4,056	322	292	378	13,507	10,041	2,740	239	213	274	12,577	9,712	2,306	559
*St. Tammany	97,401	75,056	17,372	1,915	1,022	2,036	72,700	57,749	11,429	1,327	761	1,434	57,052	45,160	8,245	3,647
District 1	115,748	88,351	21,430	2,238	1,314	2,415	86,321	67,900	14,171	1,567	974	1,709	69,695	54,933	10,552	4,210
	100.000%	76.330%	18.514%	1.934%	1.135%	2.086%	100.000%	78.660%	16.417%	1.815%	1.128%	1.980%	80.739%	78.819%	15.140%	6.041%
District 2																
*Ascension	19,394	6,120	12,718	106	63	387	14,021	4,923	8,720	83	47	248	11,805	3,924	7,583	298
Assumption	23,421	15,635	7,250	68	190	278	17,665	12,196	5,099	51	125	194	14,788	10,093	4,586	109
*Iberia	7,829	2,841	4,866	34	24	64	5,535	2,232	3,220	21	19	43	5,190	2,032	3,079	79
*Lafourche	34,695	25,738	8,071	313	307	266	26,545	20,427	5,500	241	209	168	20,717	16,283	3,990	444
St. James	22,102	10,615	11,290	43	52	102	16,401	8,231	8,039	26	41	64	14,703	7,249	7,260	194
*St. John the Baptist	6,208	1,681	4,485	6	17	19	4,670	1,349	3,290	2	14	15	4,506	1,062	3,396	48
District 2	113,649	62,630	48,680	570	653	1,116	84,837	49,358	33,868	424	455	732	71,709	40,643	29,894	1,172
	100.000%	55.108%	42.834%	0.502%	0.575%	0.982%	100.000%	58.180%	39.921%	0.500%	0.536%	0.863%	84.526%	56.678%	41.688%	1.634%
District 3																
*Jefferson	32,985	12,267	17,979	1,581	334	824	24,720	10,026	12,719	1,162	229	584	19,963	7,243	11,319	1,401
*Orleans	60,091	9,452	43,916	5,204	304	1,215	45,782	8,520	32,051	3,985	247	979	37,797	5,880	28,245	3,672
*St. Bernard	17,673	13,403	2,649	551	230	840	13,213	10,449	1,598	401	157	608	10,781	9,620	523	638
District 3	110,749	35,122	64,544	7,336	868	2,879	83,715	28,995	46,368	5,548	633	2,171	68,541	22,743	40,087	5,711
	100.000%	31.713%	58.280%	6.624%	0.784%	2.600%	100.000%	34.635%	55.388%	6.627%	0.756%	2.593%	81.874%	33.182%	58.486%	8.332%
District 4																
*Orleans	110,743	34,331	72,402	1,476	441	2,093	85,653	29,808	52,531	1,229	374	1,711	68,626	21,739	43,064	3,823
District 4	110,743	34,331	72,402	1,476	441	2,093	85,653	29,808	52,531	1,229	374	1,711	68,626	21,739	43,064	3,823
	100.000%	31.001%	65.378%	1.333%	0.398%	1.890%	100.000%	34.801%	61.330%	1.435%	0.437%	1.998%	80.121%	31.677%	62.752%	5.571%
District 5																
*Jefferson	1,524	262	1,218	23	0	21	1,215	231	950	17	0	17	1,137	156	909	72
*Orleans	108,993	44,782	58,431	2,343	626	2,811	90,530	40,467	45,033	2,080	538	2,412	67,599	26,682	35,689	5,228
District 5	110,517	45,044	59,649	2,366	626	2,832	91,745	40,698	45,983	2,097	538	2,429	68,736	26,838	36,598	5,300
	100.000%	40.758%	53.973%	2.141%	0.566%	2.563%	100.000%	44.360%	50.120%	2.286%	0.586%	2.648%	74.921%	39.045%	53.244%	7.711%
District 6																
*East Baton Rouge	76,695	52,364	19,861	2,556	470	1,444	58,655	42,387	13,028	1,833	349	1,058	45,662	36,233	7,583	1,846
*Livingston	32,799	29,259	2,354	316	254	616	23,783	21,527	1,474	196	200	386	18,252	16,724	903	625
St. Helena	11,203	5,034	6,014	16	72	67	8,440	4,036	4,291	11	60	42	8,432	3,816	4,517	99
District 6	120,697	86,657	28,229	2,888	796	2,127	90,878	67,950	18,793	2,040	609	1,486	72,346	56,773	13,003	2,570
	100.000%	71.797%	23.388%	2.393%	0.660%	1.762%	100.000%	74.771%	20.679%	2.245%	0.670%	1.635%	79.608%	78.474%	17.973%	3.552%

## Splits

	Total Population	Total White	Total Black	Total Asian	Total American Indian	Total Other	VAP Total	VAP White	VAP Black	VAP Asian	VAP American Indian	VAP Other	Reg Total Jan 2011	Reg White Jan 2011	Reg Black Jan 2011	Reg Other Jan 2011
District 7																
*Jefferson	46,439	14,830	26,093	1,987	292	3,237	34,048	12,154	17,696	1,588	202	2,408	23,722	8,382	12,930	2,410
*Orleans	51,483	13,771	34,773	1,592	267	1,080	38,205	11,606	24,305	1,272	202	820	29,017	8,679	18,047	2,291
*Plaquemines	12,906	10,742	1,266	360	223	315	9,124	7,818	754	223	146	183	6,987	6,225	447	315
District 7	110,828	39,343	62,132	3,939	782	4,632	81,377	31,578	42,755	3,083	550	3,411	59,726	23,286	31,424	5,016
	100.000%	35.499%	56.062%	3.554%	0.706%	4.179%	100.000%	38.805%	52.539%	3.789%	0.676%	4.192%	73.394%	38.988%	52.614%	8.398%
District 8																
*Jefferson	109,346	62,236	35,468	6,236	1,271	4,135	81,867	49,191	24,258	4,564	902	2,952	65,004	39,074	19,632	6,298
*Plaquemines	10,136	5,504	3,685	484	333	130	7,589	4,268	2,613	360	250	98	7,547	4,316	2,628	603
District 8	119,482	67,740	39,153	6,720	1,604	4,265	89,456	53,459	26,871	4,924	1,152	3,050	72,551	43,390	22,260	6,901
	100.000%	56.695%	32.769%	5.624%	1.342%	3.570%	100.000%	59.760%	30.038%	5.504%	1.288%	3.409%	81.102%	59.806%	30.682%	9.512%
District 9																
*Jefferson	109,011	87,438	11,681	3,812	679	5,401	88,800	72,693	8,428	2,950	520	4,209	64,626	56,085	3,793	4,748
*Orleans	12,396	10,973	923	335	58	107	10,330	9,169	772	273	38	78	8,667	7,395	602	670
District 9	121,407	98,411	12,604	4,147	737	5,508	99,130	81,862	9,200	3,223	558	4,287	73,293	63,480	4,395	5,418
	100.000%	81.059%	10.382%	3.416%	0.607%	4.537%	100.000%	82.580%	9.281%	3.251%	0.563%	4.325%	73.936%	86.611%	5.996%	7.392%
District 10																
*Jefferson	120,800	93,101	15,193	4,964	746	6,796	95,526	75,389	10,688	3,800	572	5,077	71,003	57,453	6,081	7,469
District 10	120,800	93,101	15,193	4,964	746	6,796	95,526	75,389	10,688	3,800	572	5,077	71,003	57,453	6,081	7,469
	100.000%	77.070%	12.577%	4.109%	0.618%	5.626%	100.000%	78.920%	11.189%	3.978%	0.599%	5.315%	74.328%	80.916%	8.564%	10.519%
District 11																
*St. Tammany	111,235	97,206	9,709	1,724	961	1,635	81,601	72,284	6,393	1,131	675	1,118	70,654	62,095	4,613	3,946
*Tangipahoa	9,156	8,311	587	48	93	117	6,689	6,215	306	33	66	69	5,355	5,031	144	180
District 11	120,391	105,517	10,296	1,772	1,054	1,752	88,290	78,499	6,699	1,164	741	1,187	76,009	67,126	4,757	4,126
	100.000%	87.645%	8.552%	1.472%	0.875%	1.455%	100.000%	88.910%	7.587%	1.318%	0.839%	1.344%	86.090%	88.313%	6.258%	5.428%
District 12																
*St. Tammany	25,104	23,102	1,368	168	199	267	19,303	17,931	930	112	143	187	15,908	14,596	637	675
*Tangipahoa	43,072	26,886	15,018	205	339	624	31,617	20,628	10,197	142	253	397	25,337	16,855	7,847	635
Washington	47,168	31,482	14,884	145	305	352	35,305	24,363	10,374	101	238	229	25,608	17,973	7,239	396
District 12	115,344	81,470	31,270	518	843	1,243	86,225	62,922	21,501	355	634	813	66,853	49,424	15,723	1,706
	100.000%	70.632%	27.110%	0.449%	0.731%	1.078%	100.000%	72.974%	24.936%	0.412%	0.735%	0.943%	77.533%	73.929%	23.519%	2.552%
District 13																
*Livingston	63,849	59,492	2,768	420	526	643	45,548	42,688	1,835	254	366	405	35,343	33,161	1,167	1,015
*Tangipahoa	57,933	35,778	20,307	629	337	882	44,183	29,215	13,613	489	260	606	30,918	20,648	9,192	1,078
District 13	121,782	95,270	23,075	1,049	863	1,525	89,731	71,903	15,448	743	626	1,011	66,261	53,809	10,359	2,093
	100.000%	78.230%	18.948%	0.861%	0.709%	1.252%	100.000%	80.132%	17.216%	0.828%	0.698%	1.127%	73.844%	81.208%	15.634%	3.159%
District 14																

# Splits

	Total Population	Total White	Total Black	Total Asian	Total American Indian	Total Other	VAP Total	VAP White	VAP Black	VAP Asian	VAP American Indian	VAP Other	Reg Total Jan 2011	Reg White Jan 2011	Reg Black Jan 2011	Reg Other Jan 2011
District 14																
*East Baton Rouge	121,462	43,115	71,721	4,330	465	1,831	95,075	38,280	51,239	3,649	390	1,517	61,598	19,515	39,298	2,785
District 14	121,462	43,115	71,721	4,330	465	1,831	95,075	38,280	51,239	3,649	390	1,517	61,598	19,515	39,298	2,785
	100.000%	35.497%	59.048%	3.565%	0.383%	1.507%	100.000%	40.263%	53.893%	3.838%	0.410%	1.596%	64.789%	31.681%	63.798%	4.521%
District 15																
*East Baton Rouge	121,366	26,967	90,177	1,818	442	1,962	87,163	21,841	62,283	1,338	334	1,367	68,467	17,851	48,462	2,154
District 15	121,366	26,967	90,177	1,818	442	1,962	87,163	21,841	62,283	1,338	334	1,367	68,467	17,851	48,462	2,154
	100.000%	22.220%	74.302%	1.498%	0.364%	1.617%	100.000%	25.058%	71.456%	1.535%	0.383%	1.568%	78.551%	26.072%	70.782%	3.146%
District 16																
*East Baton Rouge	120,648	92,481	20,775	4,860	536	1,996	95,613	75,367	14,746	3,651	413	1,436	76,890	64,552	8,467	3,871
District 16	120,648	92,481	20,775	4,860	536	1,996	95,613	75,367	14,746	3,651	413	1,436	76,890	64,552	8,467	3,871
	100.000%	76.654%	17.220%	4.028%	0.444%	1.654%	100.000%	78.825%	15.423%	3.819%	0.432%	1.502%	80.418%	83.954%	11.012%	5.034%
District 17																
East Feliciana	20,267	10,783	9,250	67	127	40	16,075	8,775	7,123	58	94	25	13,411	7,629	5,126	656
Iberville	33,387	16,280	16,620	124	117	246	25,885	13,254	12,258	85	98	190	20,452	10,414	9,754	284
Pointe Coupee	22,802	14,010	8,427	69	71	225	17,327	11,073	6,020	44	57	133	15,464	9,584	5,696	184
West Baton Rouge	23,788	14,271	9,132	114	85	186	17,861	11,067	6,517	92	67	118	14,796	9,244	5,408	144
West Feliciana	15,625	8,125	7,317	42	35	106	12,907	6,412	6,364	24	33	74	6,796	4,448	2,254	94
District 17	115,869	63,469	50,746	416	435	803	90,055	50,581	38,282	303	349	540	70,919	41,319	28,238	1,362
	100.000%	54.777%	43.796%	0.359%	0.375%	0.693%	100.000%	56.167%	42.510%	0.336%	0.388%	0.600%	78.751%	58.262%	39.817%	1.921%
District 18																
*Ascension	87,821	72,452	11,748	1,128	523	1,970	62,439	52,414	7,691	733	365	1,236	52,299	44,308	5,673	2,318
*Livingston	31,378	28,850	1,819	170	275	264	23,365	21,640	1,226	115	216	168	17,985	16,623	915	447
District 18	119,199	101,302	13,567	1,298	798	2,234	85,804	74,054	8,917	848	581	1,404	70,284	60,931	6,588	2,765
	100.000%	84.986%	11.382%	1.089%	0.669%	1.874%	100.000%	86.306%	10.392%	0.988%	0.677%	1.636%	81.912%	86.693%	9.373%	3.934%
District 19																
*Jefferson	12,447	1,981	9,367	40	80	979	8,979	1,589	6,563	29	64	734	6,622	734	5,469	419
St. Charles	52,780	36,540	14,395	575	371	899	38,572	27,445	9,868	357	263	639	31,705	22,913	7,454	1,338
*St. John the Baptist	39,716	17,820	20,459	408	220	809	28,898	14,059	13,837	288	150	564	23,279	11,404	10,869	1,006
*Tangipahoa	10,936	9,231	1,469	73	65	98	8,188	7,073	943	46	52	74	7,054	6,045	806	203
District 19	115,879	65,572	45,690	1,096	736	2,785	84,637	50,166	31,211	720	529	2,011	68,660	41,096	24,598	2,966
	100.000%	56.587%	39.429%	0.946%	0.635%	2.403%	100.000%	59.272%	36.876%	0.851%	0.625%	2.376%	81.123%	59.854%	35.826%	4.320%
District 20																
*Lafourche	61,623	50,707	5,292	542	3,150	1,932	46,107	38,935	3,445	371	1,978	1,378	32,994	29,544	2,326	1,124
*Terrebonne	56,465	38,624	10,282	627	5,537	1,395	41,568	29,721	6,845	455	3,567	980	30,000	22,615	5,022	2,363



## Splits

	Total Population	Total White	Total Black	Total Asian	Total American Indian	Total Other	VAP Total	VAP White	VAP Black	VAP Asian	VAP American Indian	VAP Other	Reg Total Jan 2011	Reg White Jan 2011	Reg Black Jan 2011	Reg Other Jan 2011
*Calcasieu	116,204	71,396	40,966	1,467	858	1,517	86,955	55,799	28,381	1,085	646	1,044	72,068	46,174	23,444	2,450
District 27	116,204	71,396	40,966	1,467	858	1,517	86,955	55,799	28,381	1,085	646	1,044	72,068	46,174	23,444	2,450
	100.000%	61.440%	35.254%	1.262%	0.738%	1.305%	100.000%	64.170%	32.639%	1.248%	0.743%	1.201%	82.880%	64.070%	32.530%	3.400%
District 28																
Allen	25,764	18,435	6,192	220	749	168	19,870	14,288	4,828	154	495	105	13,110	10,190	2,397	523
*Avoyelles	30,285	18,197	11,325	133	474	156	22,944	14,227	8,200	93	319	105	15,894	10,661	4,922	311
Evangeline	33,984	23,439	9,862	139	161	383	24,817	17,619	6,661	97	117	323	21,407	15,267	5,973	167
*St. Landry	24,157	17,141	6,463	118	127	308	17,796	12,958	4,467	81	76	214	15,375	10,965	4,095	315
District 28	114,190	77,212	33,842	610	1,511	1,015	85,427	59,092	24,156	425	1,007	747	65,786	47,083	17,387	1,316
	100.000%	67.617%	29.637%	0.534%	1.323%	0.889%	100.000%	69.173%	28.277%	0.498%	1.179%	0.874%	77.008%	71.570%	26.430%	2.000%
District 29																
*Rapides	75,207	59,242	12,490	1,347	1,022	1,106	56,712	45,634	8,600	973	762	743	45,088	38,031	5,425	1,632
Sabine	24,233	17,155	4,234	84	2,636	124	18,311	13,544	2,835	63	1,796	73	13,837	10,811	2,032	994
*Vernon	11,257	10,611	111	72	370	93	8,345	7,903	61	56	269	56	6,834	6,589	30	215
District 29	110,697	87,008	16,835	1,503	4,028	1,323	83,368	67,081	11,496	1,092	2,827	872	65,759	55,431	7,487	2,841
	100.000%	78.600%	15.208%	1.358%	3.639%	1.195%	100.000%	80.464%	13.789%	1.310%	3.391%	1.046%	78.878%	84.294%	11.386%	4.320%
District 30																
Beauregard	35,654	29,321	5,016	353	652	312	26,359	21,902	3,569	239	460	189	19,924	16,703	2,304	917
*Calcasieu	34,241	30,937	2,532	140	398	234	25,228	23,083	1,646	96	267	136	20,902	19,044	1,332	526
*Vernon	41,077	29,003	8,202	1,354	807	1,711	29,477	21,513	5,288	970	579	1,127	14,786	11,292	2,465	1,029
District 30	110,972	89,261	15,750	1,847	1,857	2,257	81,064	66,498	10,503	1,305	1,306	1,452	55,612	47,039	6,101	2,472
	100.000%	80.436%	14.193%	1.664%	1.673%	2.034%	100.000%	82.031%	12.956%	1.610%	1.611%	1.791%	68.603%	84.584%	10.971%	4.445%
District 31																
Bienville	14,353	7,935	6,153	44	132	89	11,012	6,279	4,544	31	105	53	9,256	5,112	4,085	59
*Lincoln	21,394	5,790	14,818	361	86	339	16,783	4,803	11,312	337	74	257	10,090	2,914	6,763	413
*Natchitoches	21,372	8,932	11,696	85	405	254	16,044	7,203	8,269	66	300	206	11,636	5,082	6,007	547
*Rapides	45,272	13,350	30,553	508	520	341	32,837	11,124	20,698	367	412	236	25,906	8,461	16,631	814
Red River	9,091	5,360	3,633	16	43	39	6,778	4,256	2,450	12	34	26	5,981	3,566	2,377	38
District 31	111,482	41,367	66,853	1,014	1,186	1,062	83,454	33,665	47,273	813	925	778	62,869	25,135	35,863	1,871
	100.000%	37.106%	59.968%	0.910%	1.064%	0.953%	100.000%	40.340%	56.646%	0.974%	1.108%	0.932%	75.334%	39.980%	57.044%	2.976%
District 32																
*Avoyelles	11,788	9,991	1,551	41	167	38	8,846	7,623	1,047	33	112	31	7,211	6,213	868	130
Caldwell	10,132	8,213	1,778	30	64	47	7,758	6,314	1,336	23	51	34	6,324	5,351	911	62
Catahoula	10,407	6,985	3,318	9	53	42	8,057	5,543	2,438	8	43	25	6,380	4,749	1,596	35
Concordia	20,822	11,959	8,604	59	123	77	15,589	9,298	6,117	41	88	45	12,696	7,997	4,529	170
Franklin	20,767	13,930	6,620	65	82	70	15,450	10,838	4,471	42	63	36	13,466	9,408	3,978	80
La Salle	14,890	12,689	1,808	40	215	138	11,366	9,677	1,402	35	143	109	8,427	7,648	621	158

## Splits

	Total Population	Total White	Total Black	Total Asian	Total American Indian	Total Other	VAP Total	VAP White	VAP Black	VAP Asian	VAP American Indian	VAP Other	Reg Total Jan 2011	Reg White Jan 2011	Reg Black Jan 2011	Reg Other Jan 2011
District 32																
*Ouachita	6,099	5,460	570	11	46	12	4,590	4,174	372	4	32	8	4,213	3,724	360	129
*Rapides	11,134	10,781	107	57	140	49	8,050	7,821	70	37	96	26	7,062	6,836	51	175
*Richland	5,290	3,956	1,278	19	18	19	4,068	3,026	1,005	11	16	10	3,000	2,387	586	27
District 32	111,329	83,964	25,634	331	908	492	83,774	64,314	18,258	234	644	324	68,779	54,313	13,500	966
	100.000%	75.420%	23.025%	0.297%	0.816%	0.442%	100.000%	76.771%	21.794%	0.279%	0.769%	0.387%	82.101%	78.967%	19.628%	1.404%
District 33																
*Lincoln	25,341	19,985	4,366	513	144	333	20,347	16,072	3,509	412	109	245	13,926	11,690	1,756	480
*Morehouse	12,931	9,696	3,044	76	50	65	10,046	7,760	2,151	53	43	39	9,086	6,952	1,977	157
*Ouachita	41,355	33,263	6,914	725	171	282	31,057	25,686	4,573	492	124	182	27,079	23,063	3,045	971
Union	22,721	15,682	6,242	49	115	633	17,493	12,568	4,439	31	91	364	14,964	10,863	3,709	392
West Carroll	11,604	9,497	1,870	34	86	117	8,746	7,254	1,330	24	62	76	7,167	6,017	1,096	54
District 33	113,952	88,123	22,436	1,397	566	1,430	87,689	69,340	16,002	1,012	429	906	72,222	58,585	11,583	2,054
	100.000%	77.333%	19.689%	1.226%	0.497%	1.255%	100.000%	79.075%	18.249%	1.154%	0.489%	1.033%	82.362%	81.118%	16.038%	2.844%
District 34																
East Carroll	7,759	2,245	5,398	47	31	38	5,766	1,845	3,830	37	25	29	5,330	1,617	3,664	49
Madison	12,093	4,498	7,452	33	55	55	9,071	3,644	5,312	20	45	50	7,634	2,780	4,764	90
*Morehouse	15,048	4,649	10,237	66	52	44	11,015	3,823	7,079	49	36	28	9,595	3,096	6,352	147
*Ouachita	57,961	12,069	44,880	459	174	379	41,301	10,352	30,162	385	134	268	33,173	6,513	25,325	1,335
*Richland	15,435	8,923	6,266	73	78	95	11,372	6,973	4,232	54	54	59	9,939	5,786	4,060	93
Tensas	5,252	2,202	2,991	13	15	31	3,923	1,796	2,085	11	9	22	4,131	1,807	2,304	20
District 34	113,548	34,586	77,224	691	405	642	82,448	28,433	52,700	556	303	456	69,802	21,599	46,469	1,734
	100.000%	30.459%	68.010%	0.609%	0.357%	0.565%	100.000%	34.486%	63.919%	0.674%	0.368%	0.553%	84.662%	30.943%	66.573%	2.484%
District 35																
Grant	22,309	18,149	3,602	97	385	76	17,158	13,788	2,978	67	274	51	11,900	10,361	1,284	255
Jackson	16,274	11,084	4,947	67	83	93	12,570	8,681	3,724	39	65	61	9,846	6,879	2,805	162
*Natchitoches	18,194	12,562	5,082	112	244	194	13,922	10,023	3,502	85	177	135	11,346	8,099	2,871	376
*Ouachita	48,305	42,092	4,830	527	314	542	36,399	32,104	3,298	367	259	371	29,943	26,645	2,267	1,031
Winn	15,313	10,223	4,777	53	167	93	11,871	8,018	3,619	44	129	61	8,892	6,410	2,406	76
District 35	120,395	94,110	23,238	856	1,193	998	91,920	72,614	17,121	602	904	679	71,927	58,394	11,633	1,900
	100.000%	78.168%	19.301%	0.711%	0.991%	0.829%	100.000%	78.997%	18.626%	0.655%	0.983%	0.739%	78.250%	81.185%	16.173%	2.642%
District 36																
*Bossier	55,809	44,836	8,955	719	565	734	41,268	33,415	6,496	492	417	448	32,426	26,391	4,873	1,162
Claiborne	17,195	8,167	8,820	62	99	47	13,815	6,781	6,889	37	80	28	8,877	4,908	3,872	97
Webster	41,207	26,469	14,044	180	316	198	31,497	20,907	10,110	120	241	119	23,913	16,115	7,416	382
District 36	114,211	79,472	31,819	961	980	979	86,580	61,103	23,495	649	738	595	65,216	47,414	16,161	1,641
	100.000%	69.583%	27.860%	0.841%	0.858%	0.857%	100.000%	70.574%	27.137%	0.750%	0.852%	0.687%	75.325%	72.703%	24.781%	2.516%

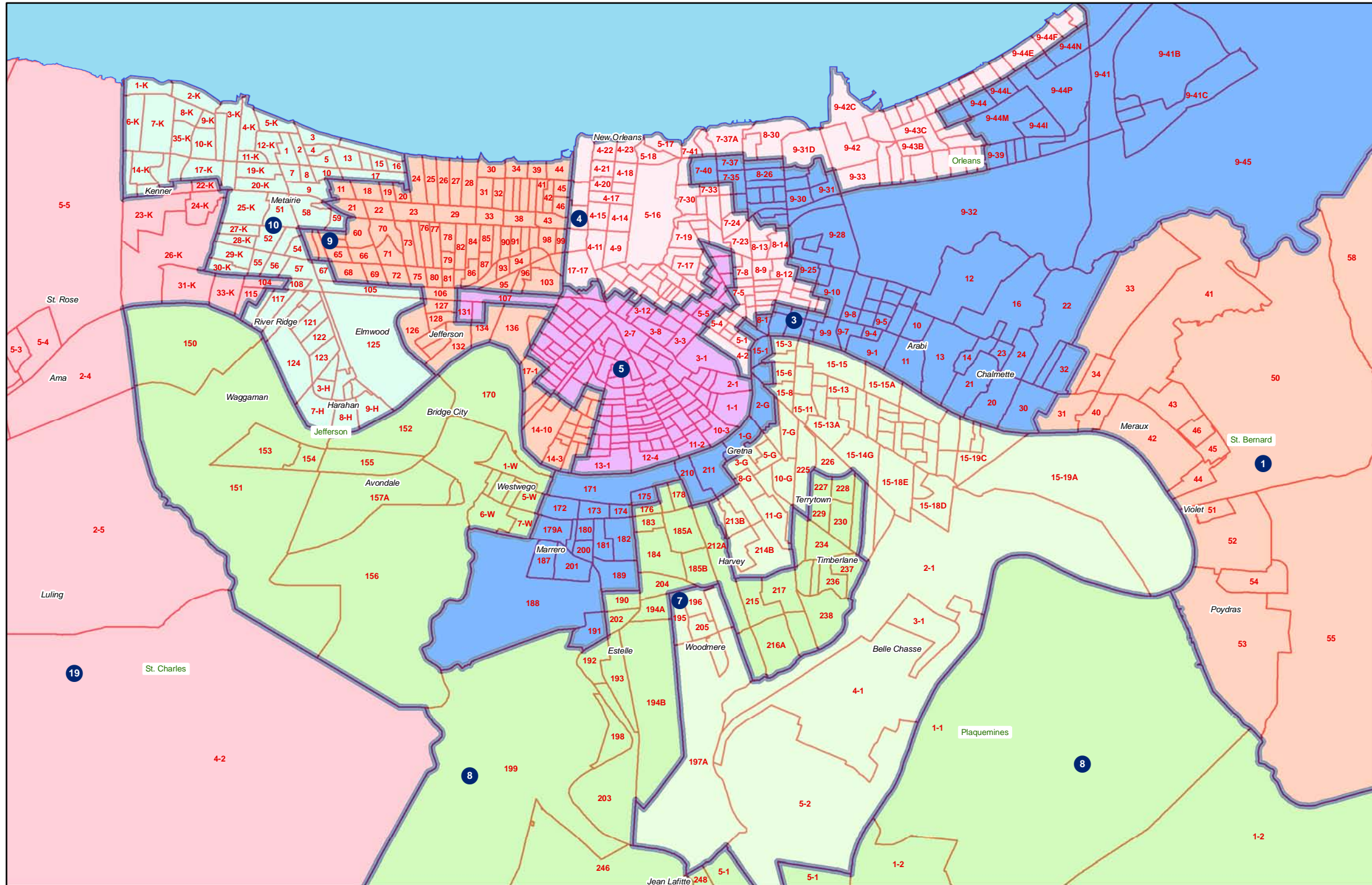
## Splits

	Total Population	Total White	Total Black	Total Asian	Total American Indian	Total Other	VAP Total	VAP White	VAP Black	VAP Asian	VAP American Indian	VAP Other	Reg Total Jan 2011	Reg White Jan 2011	Reg Black Jan 2011	Reg Other Jan 2011
District 37																
*Bossier	61,170	39,594	16,651	1,797	574	2,554	45,677	31,277	10,917	1,344	420	1,719	28,408	20,272	6,618	1,518
*Caddo	51,551	37,384	11,615	1,233	440	879	41,020	30,858	8,267	922	347	626	31,525	24,686	5,515	1,324
District 37	112,721	76,978	28,266	3,030	1,014	3,433	86,697	62,135	19,184	2,266	767	2,345	59,933	44,958	12,133	2,842
	100.000%	68.291%	25.076%	2.688%	0.900%	3.046%	100.000%	71.669%	22.128%	2.614%	0.885%	2.705%	69.129%	75.014%	20.244%	4.742%
District 38																
*Caddo	90,014	54,590	32,078	1,539	806	1,001	68,013	43,368	22,263	1,087	611	684	53,931	35,075	16,726	2,130
De Soto	26,656	15,456	10,600	54	331	215	20,006	12,055	7,495	42	273	141	16,396	9,663	6,191	542
District 38	116,670	70,046	42,678	1,593	1,137	1,216	88,019	55,423	29,758	1,129	884	825	70,327	44,738	22,917	2,672
	100.000%	60.038%	36.580%	1.365%	0.975%	1.042%	100.000%	62.967%	33.809%	1.283%	1.004%	0.937%	79.900%	63.614%	32.586%	3.799%
District 39																
*Caddo	113,404	32,968	78,536	458	660	782	83,282	26,522	55,372	354	497	537	65,918	19,402	44,467	2,049
District 39	113,404	32,968	78,536	458	660	782	83,282	26,522	55,372	354	497	537	65,918	19,402	44,467	2,049
	100.000%	29.071%	69.253%	0.404%	0.582%	0.690%	100.000%	31.846%	66.487%	0.425%	0.597%	0.645%	79.150%	29.434%	67.458%	3.108%



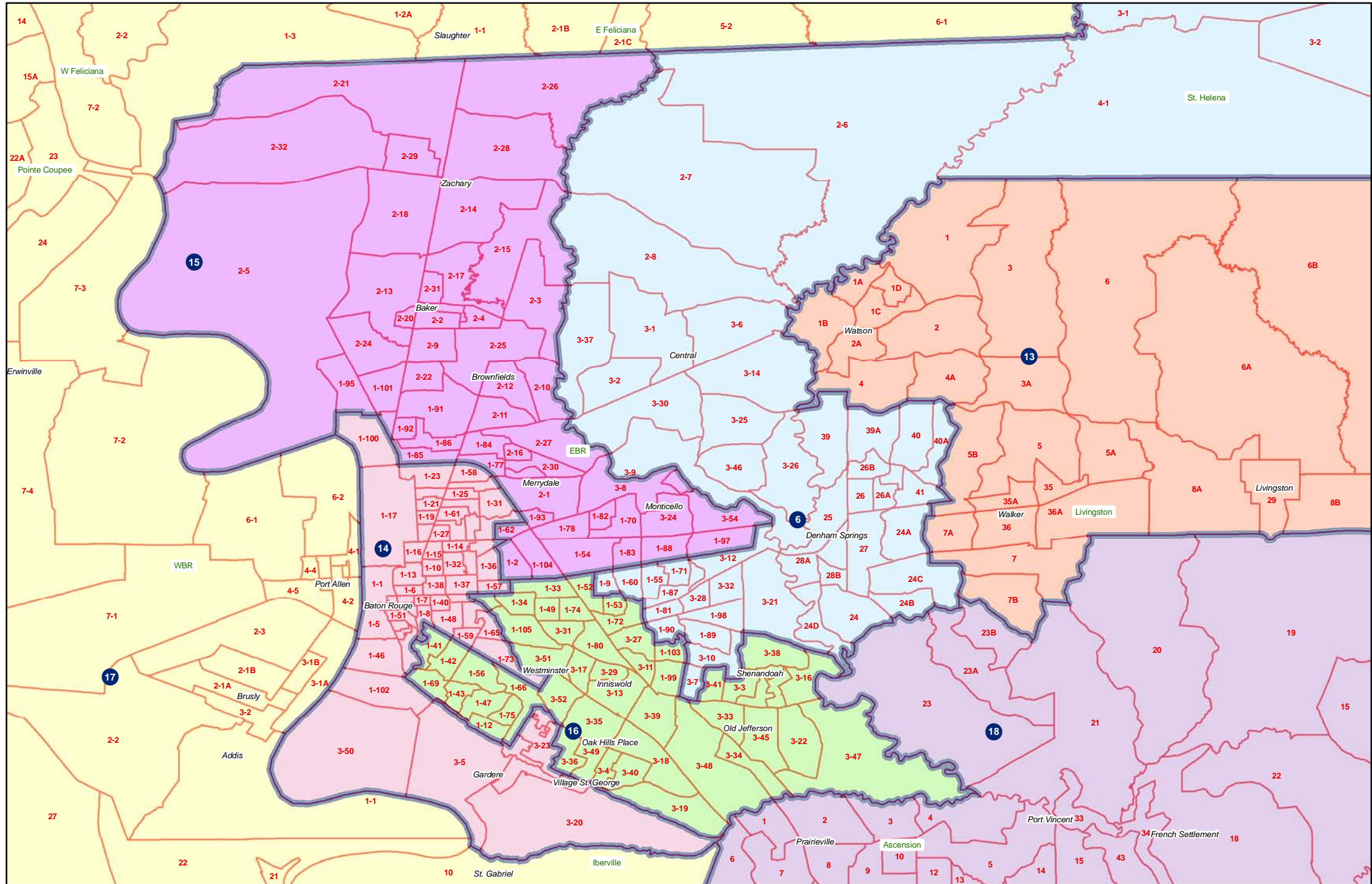


# Jefferson / Orleans



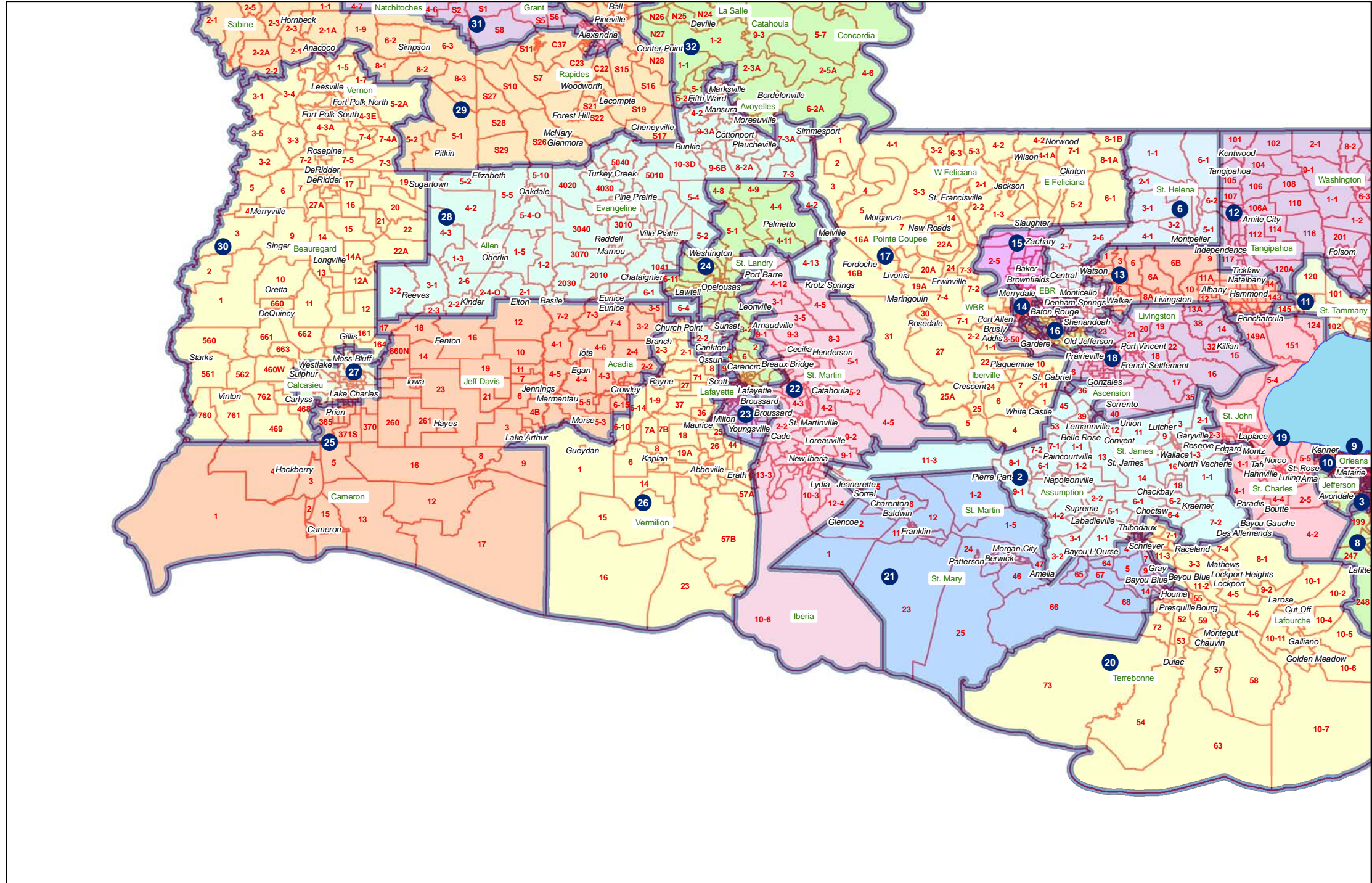


# Baton Rouge



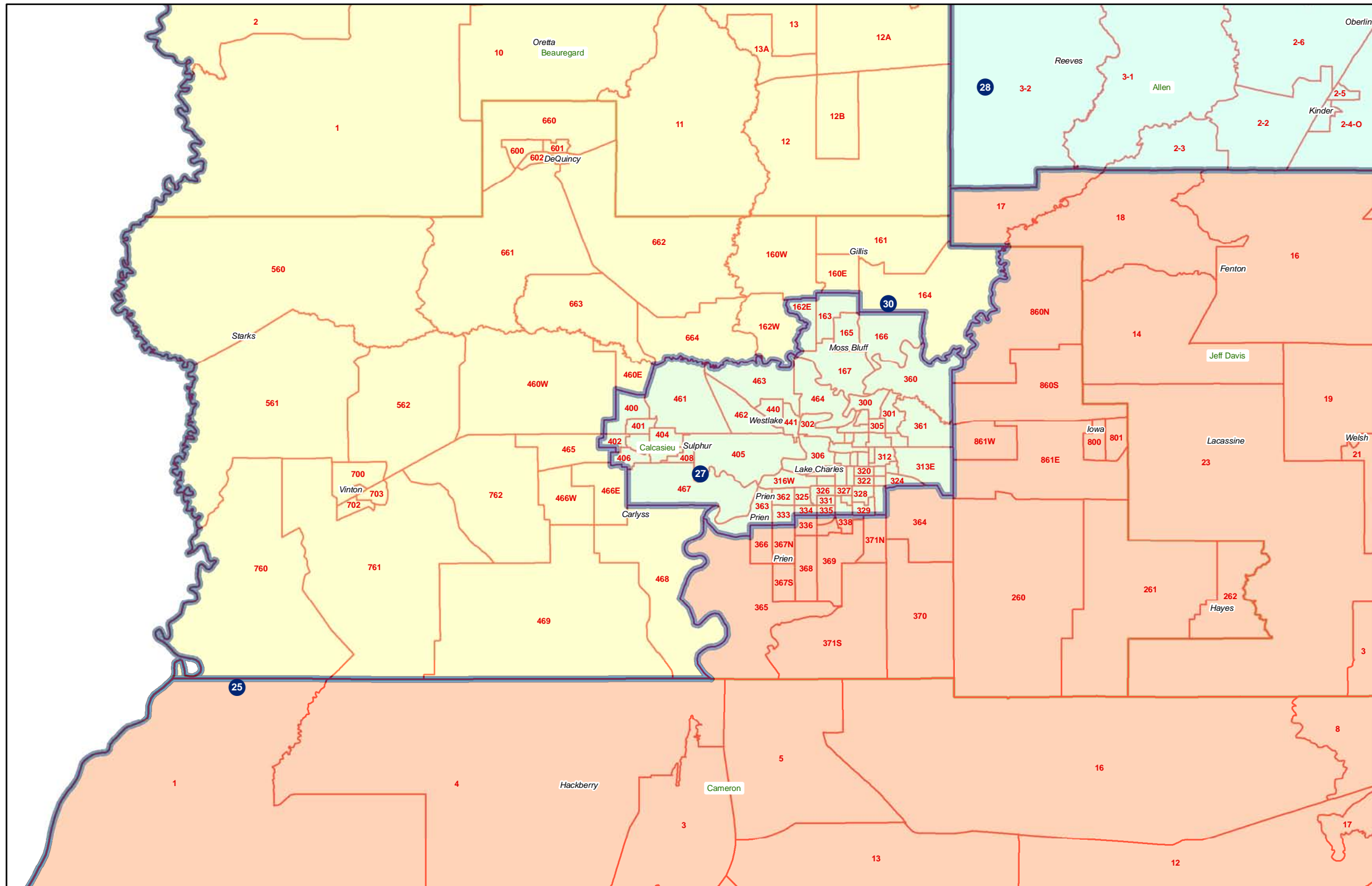


# Southwest

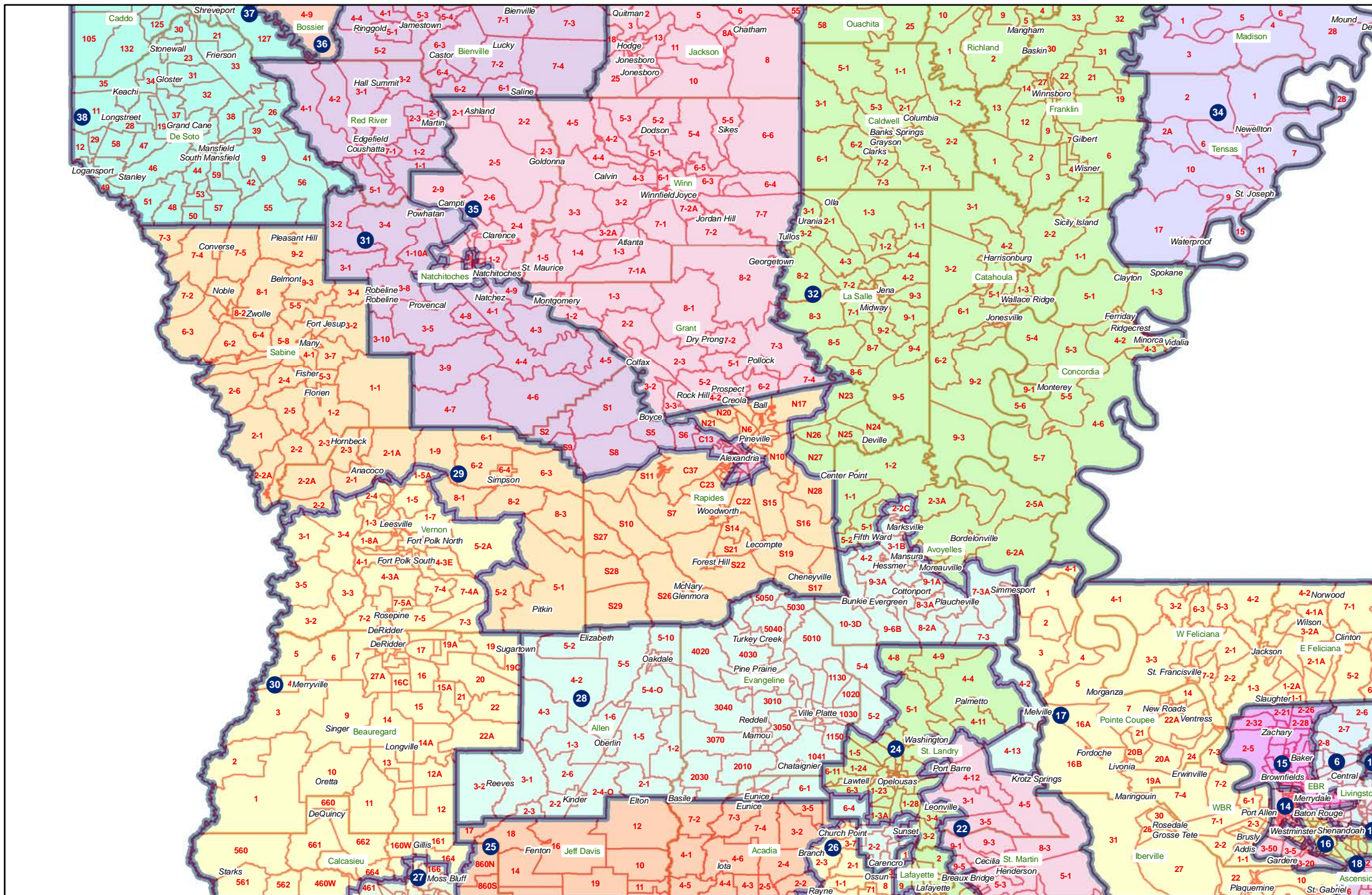




# Calcasieu



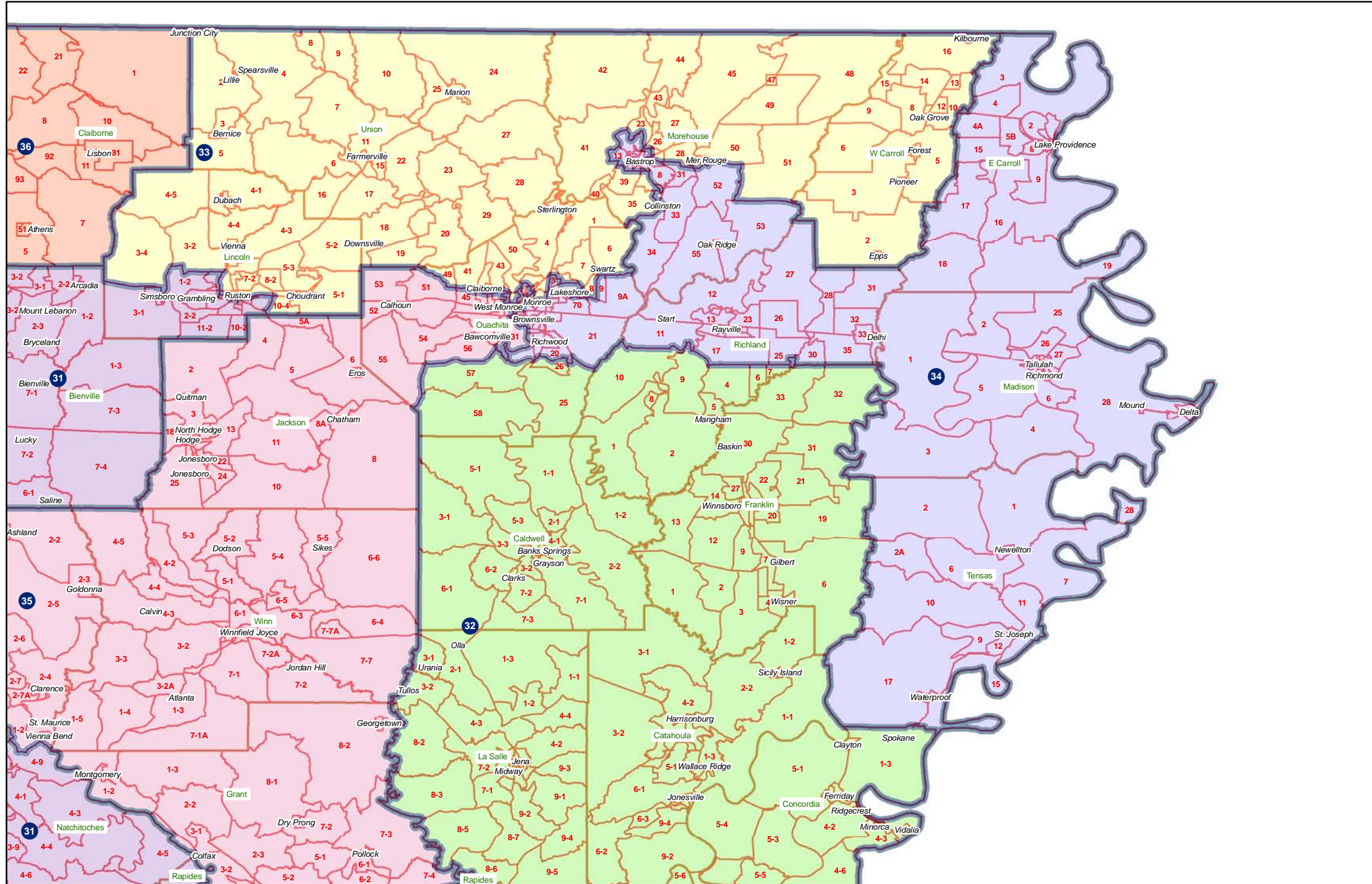
# Central







# Northeast



# Ouachita

