

Regular Session, 2011

SENATE BILL NO. 200

BY SENATOR CLAITOR

Prefiled pursuant to Article III, Section 2(A)(4)(b)(i) of the Constitution of Louisiana.

BESE. Provides relative to the election districts for the State Board of Elementary and Secondary Education.

1
2
3
4
5
6
7
8
9
10
11
12
13
14
15
16
17

AN ACT

To enact R.S. 17:2.1 and to repeal R.S. 17:2.2, relative to redistricting; to provide for election districts for the State Board of Elementary and Secondary Education; to provide for election of members; to provide for effectiveness; and to provide for related matters.

Be it enacted by the Legislature of Louisiana:

Section 1. R.S. 17:2.1 is hereby enacted to read as follows:

§2.1. Districts for election of members of the State Board of Elementary and Secondary Education

Louisiana shall be divided into eight districts for the election of eight of the members of the State Board of Elementary and Secondary Education. One member shall be elected from each of the following districts:

- (1) District 1 is composed of Precincts 1, 2, 3, 4, 5, 7, 8, 9, 10, 11, 12, 13, 14, 15, 16, 17, 18, 19, 20, 21, 22, 23, 24, 25, 26, 27, 28, 29, 30, 31, 32, 33, 34, 35, 36, 37, 38, 39, 40, 41, 42, 43, 44, 45, 46, 51, 52, 53, 54, 55, 56, 58, 59, 60, 61, 62, 63, 64, 65, 66, 67, 68, 69, 70, 71, 72, 73, 74, 75, 76, 77, 78, 79, 80, 81, 82, 83, 84, 85, 86, 87, 88, 89, 90, 91, 92, 93, 94, 95, 96, 97, 98, 99, 100, 101, 102, 103, 105, 106, 116, 117,**

1 118, 119, 120, 121, 122, 123, 124, 125, 126, 127, 128, 129, 130, 132, 134, 136, 138,
2 170, 171, 172, 175, 176, 177, 178, 179A, 182, 183, 184, 185A, 189, 190, 204, 1-H,
3 2-H, 3-H, 4-H, 5-H, 6-H, 7-H, 8-H, 9-H, 1-K, 2-K, 3-K, 4-K, 5-K, 6-K, 7-K, 8-K,
4 9-K, 10-K, 11-K, 12-K, 13-KA, 14-K, 16-K, 17-K, 18-K, 19-K, 20-K, 25-K, 27-K,
5 28-K, 29-K, 34-K, 35-K, 1-W, 3-W, 4-W, 5-W, 6-W and 7-W of Jefferson Parish;
6 Precincts 3-20, 4-7, 4-8, 4-9, 4-11, 4-14, 4-15, 4-17, 4-17A, 4-18, 4-20, 4-21, 4-22,
7 4-23, 5-15, 5-16, 5-17, 5-18, 7-41, 7-42, 13-4, 13-6, 13-7, 13-8, 13-9, 13-10, 14-1,
8 14-2, 14-3, 14-4, 14-5, 14-6, 14-7, 14-8, 14-9, 14-10, 14-11, 14-12, 14-13A, 14-14,
9 14-15, 14-16, 14-17, 14-18A, 14-19, 14-20, 14-21, 16-1, 16-1A, 16-2, 17-1, 17-17,
10 17-18, 17-18A, 17-19 and 17-20 of Orleans Parish; St. Tammany Parish and
11 Precincts 4-11 of Washington Parish.

12 (2) District 2 is composed of Precincts 1-1, 1-2, 2-1, 2-2, 4-1, 4-2, 5-1, 6-1,
13 6-2 and 7-1 of Assumption Parish; Precincts 57, 104, 107, 108, 115, 131, 133,
14 150, 151, 152, 153, 154, 155, 156, 157A, 157B, 173, 174, 179B, 180, 181, 185B,
15 187, 188, 191, 194A, 195, 196, 197A, 197B, 197C, 200, 201, 202, 205, 210, 211,
16 212A, 212B, 213A, 213B, 213C, 214A, 214B, 215, 216A, 216B, 217, 225, 232A,
17 232B, 1-G, 2-G, 4-G, 6-G, 7-G, 13-KB, 15-K, 21-K, 22-K, 23-K, 24-K, 26-K,
18 30-K, 31-K, 33-K and 2-W of Jefferson Parish; Precincts 1-1, 1-2, 1-5, 1-6, 2-1,
19 2-2, 2-3, 2-4, 2-6, 2-6A, 2-7, 3-1, 3-3, 3-5, 3-8, 3-9, 3-12, 3-14, 3-15, 3-18, 3-19, 4-2,
20 4-3, 4-4, 4-5, 4-6, 5-1, 5-2, 5-3, 5-4, 5-5, 5-7, 5-8, 5-9, 5-10, 5-11, 5-12, 5-13, 6-1,
21 6-2, 6-4, 6-6, 6-7, 6-8, 6-9, 7-1, 7-2, 7-4, 7-5, 7-6, 7-7, 7-8, 7-9A, 7-10, 7-11, 7-12,
22 7-13, 7-14, 7-15, 7-16, 7-17, 7-18, 7-19, 7-20, 7-21, 7-23, 7-24, 7-25, 7-25A, 7-26,
23 7-27, 7-27B, 7-28, 7-28A, 7-29, 7-30, 7-32, 7-33, 7-34, 7-35, 7-37, 7-37A, 7-40, 8-1,
24 8-2, 8-4, 8-6, 8-7, 8-8, 8-9, 8-12, 8-13, 8-14, 8-15, 8-19, 8-20, 8-21, 8-22, 8-23, 8-24,
25 8-25, 8-26, 8-27, 8-28, 8-30, 9-1, 9-3, 9-3A, 9-4, 9-5, 9-5A, 9-6B, 9-6C, 9-6D, 9-6E,
26 9-6F, 9-7, 9-8, 9-8A, 9-9, 9-10, 9-11, 9-12, 9-13, 9-14, 9-15, 9-16, 9-17, 9-19, 9-21,
27 9-23, 9-25, 9-26, 9-28, 9-28C, 9-28E, 9-29, 9-30, 9-30A, 9-31, 9-31A, 9-31B,
28 9-31D, 9-32, 9-33, 9-34A, 9-35, 9-35A, 9-36, 9-36B, 9-37, 9-38, 9-38A, 9-39,
29 9-39B, 9-40, 9-40A, 9-40C, 9-41, 9-41A, 9-41B, 9-41C, 9-41D, 9-42, 9-42C, 9-43A,

1 9-43B, 9-43C, 9-43E, 9-43F, 9-43G, 9-43H, 9-43I, 9-43J, 9-43K, 9-43L, 9-43M,
2 9-43N, 9-44, 9-44A, 9-44B, 9-44D, 9-44E, 9-44F, 9-44G, 9-44I, 9-44J, 9-44L,
3 9-44M, 9-44N, 9-44O, 9-44P, 9-44Q, 9-45, 9-45A, 10-3, 10-6, 10-7, 10-8, 10-9,
4 10-11, 10-12, 10-13, 10-14, 11-2, 11-3, 11-4, 11-5, 11-8, 11-9, 11-10, 11-11, 11-12,
5 11-13, 11-14, 11-17, 12-1, 12-2, 12-3, 12-4, 12-5, 12-6, 12-7, 12-8, 12-9, 12-10,
6 12-11, 12-12, 12-13, 12-14, 12-16, 12-17, 12-19, 13-1, 13-2, 13-3, 13-5, 13-11,
7 13-12, 13-13, 13-14, 13-15, 13-16, 14-23, 14-24A, 14-25, 14-26, 15-1, 15-2, 15-3,
8 15-5, 15-6, 15-8, 15-9, 15-10, 15-11, 15-12, 15-12A, 15-13, 15-13A, 15-13B, 15-14,
9 15-14A, 15-14B, 15-14C, 15-14D, 15-14E, 15-14F, 15-14G, 15-15, 15-15A,
10 15-15B, 15-16, 15-17, 15-17A, 15-17B, 15-18, 15-18A, 15-18B, 15-18C, 15-18D,
11 15-18E, 15-18F, 15-19, 15-19A, 15-19B, 15-19C, 16-3, 16-4, 16-5, 16-6, 16-7, 16-8,
12 16-9, 17-2, 17-3, 17-4, 17-5, 17-6, 17-7, 17-8, 17-9, 17-10, 17-11, 17-12, 17-13,
13 17-13A, 17-14, 17-15 and 17-16 of Orleans Parish; St. Charles Parish; St. James
14 Parish and Precincts 1-2, 1-3, 1-4, 1-5, 2-1, 2-2, 2-3, 2-4, 3-1, 3-2, 3-3, 3-4, 4-1,
15 4-2, 4-3, 4-4, 4-8, 4-9, 5-1, 5-2, 5-3, 5-4, 5-5, 5-6, 5-7, 6-1, 6-3, 6-4, 7-2, 7-3, 7-4,
16 7-5 and 7-7 of St. John the Baptist Parish.

17 (3) District 3 is composed of Precincts 2-3, 3-1, 3-2, 5-2, 5-3, 5-4, 7-2, 8-1
18 and 9-1 of Assumption Parish; Iberia Parish; Precincts 4, 5, 6A, 25, 25A and
19 25B of Iberville Parish; Precincts 192, 193, 194B, 198, 199, 203, 226, 227, 228,
20 229, 230, 231, 234, 235, 236, 237, 238, 246, 247, 248, 3-G, 5-G, 8-G, 9-G, 10-G,
21 11-G, 12-G, 13-G, 1-GI and 1-L of Jefferson Parish; Lafourche Parish;
22 Plaquemines Parish; Precincts 16A, 16B, 17, 18, 20A and 20B of Pointe Coupee
23 Parish; St. Bernard Parish; Precincts 1-1 of St. John the Baptist Parish;
24 Precincts 1-6, 1-26, 3-1, 3-3, 3-5, 4-3, 4-5, 4-7, 4-12, 4-12A and 4-13 of St. Landry
25 Parish; Precincts 1-1, 1-2, 1-4, 1-5, 2-2, 4-2, 4-4, 4-5, 5-1, 5-2, 5-3, 5-4, 6-1, 6-2,
26 6-3A, 6-3B, 6-4, 7-1A, 7-2A, 8-1, 8-3, 8-4, 8-4A, 9-2, 9-3 and 9-4 of St. Martin
27 Parish; St. Mary Parish; Terrebonne Parish and Precincts 23, 26, 27A-2, 28, 29,
28 32B, 34, 35, 36A-1, 37, 38, 39, 40, 41, 42A, 42B, 44, 45A, 46A, 46B-1, 46B-2,
29 46B-3, 49B-1, 49B-3, 50A, 50B, 51, 53, 54, 55, 56, 57A and 57B of Vermilion

Parish.

(4) District 4 is composed of Bienville Parish; Bossier Parish; Caddo Parish; De Soto Parish; Natchitoches Parish; Red River Parish; Sabine Parish; Vernon Parish and Webster Parish.

(5) District 5 is composed of Caldwell Parish; Catahoula Parish; Claiborne Parish; Concordia Parish; East Carroll Parish; Franklin Parish; Grant Parish; Jackson Parish; La Salle Parish; Lincoln Parish; Madison Parish; Morehouse Parish; Ouachita Parish; Rapides Parish; Richland Parish; Tensas Parish; Union Parish; West Carroll Parish and Winn Parish.

(6) District 6 is composed of Precincts 1, 2, 3, 4, 5, 6, 7, 8, 9, 10, 11, 12, 13, 14, 15, 16, 17, 18, 19, 20, 21, 22, 23, 24, 25, 26, 27, 28, 31, 32, 33, 34, 35, 40, 41, 43, 58, 60 and 61 of Ascension Parish; Precincts 1-7, 1-8, 1-9, 1-12, 1-33, 1-34, 1-35, 1-39, 1-40, 1-41, 1-42, 1-43, 1-44, 1-46, 1-47, 1-48, 1-49, 1-52, 1-53, 1-55, 1-56, 1-57, 1-60, 1-64, 1-65, 1-69, 1-71, 1-72, 1-74, 1-75, 1-80, 1-81, 1-87, 1-89, 1-90, 1-98, 1-99, 1-102, 1-103, 1-105, 2-6, 2-7, 2-8, 2-18, 2-21, 2-26, 2-29, 3-1, 3-2, 3-3, 3-4, 3-6, 3-7, 3-9, 3-10, 3-11, 3-12, 3-13, 3-14, 3-15, 3-16, 3-17, 3-18, 3-19, 3-20, 3-21, 3-22, 3-23, 3-25, 3-26, 3-27, 3-28, 3-29, 3-30, 3-31, 3-32, 3-33, 3-34, 3-35, 3-36, 3-37, 3-38, 3-39, 3-40, 3-41, 3-43, 3-45, 3-46, 3-47, 3-48, 3-49, 3-51, 3-52, 3-53 and 3-55 of East Baton Rouge Parish; Livingston Parish; Precincts 27, 27A, 28, 28A, 33, 70, 70A, 71, 72, 72A, 73, 74, 104, 104A, 106, 106A, 106B, 108, 110, 112, 114, 116, 117, 118, 120, 120A, 120B, 121, 121A, 121B, 122, 122A, 124, 133A, 137, 137A, 137B, 137C, 137D, 139, 145, 149, 149A and 151 of Tangipahoa Parish and Precincts 1-1, 1-2, 3-1, 3-3, 3-3A, 3-3C, 4-1, 4-1A, 4-2A, 4-3, 4-3B, 4-4, 4-5, 4-5B, 4-6, 4-7, 4-7B, 4-8, 4-9, 4-9A, 4-10, 4-10A, 5-1, 5-2, 5-3, 6-1, 6-2, 6-3, 6-4, 7-1, 7-1A, 7-2, 7-3, 8-3 and 9-1 of Washington Parish.

(7) District 7 is composed of Acadia Parish; Allen Parish; Beauregard Parish; Calcasieu Parish; Cameron Parish; Precincts 1020, 1040, 1041, 1050, 1060, 1130, 1131, 1140, 1141, 1150, 1161, 2010, 2020, 2030, 2040, 3010, 3020, 3030, 3031, 3032, 3040, 3050, 3051, 3052, 3060, 3070, 3071, 4001, 4010, 4011,

1 4012, 4013, 4020, 4021, 4030, 4040, 5004, 5010, 5020, 5030, 5040, 5041 and 5050
 2 of Evangeline Parish; Jefferson Davis Parish; Precincts 1, 2, 3, 4, 6, 8, 9, 10, 11,
 3 12, 13, 25, 26, 27, 28A, 28B, 29, 30A, 31, 32, 33, 34, 35, 36, 37, 38, 39, 40, 41, 42,
 4 43, 44, 45, 46, 47, 48, 49, 65, 66, 67, 69, 70, 71, 72, 73, 74, 75, 76, 77, 78, 79, 80, 81,
 5 82, 83, 84, 85, 86, 87, 88, 89, 90, 91, 92, 93, 94, 95, 96, 97A, 97B, 98, 99, 100, 101,
 6 102, 103, 104, 105, 106, 107, 108, 109, 110 and 111 of Lafayette Parish; Precincts
 7 2-2, 2-3, 2-6, 2-8, 2-9, 6-2, 6-7, 6-13 and 6-14 of St. Landry Parish and Precincts
 8 1, 2, 3, 5A, 5B, 6, 7A, 7B, 8, 9, 10A, 11, 12, 14, 15, 16, 18, 19A, 19B, 20A-1, 20A-2,
 9 20B-1, 21, 24 and 25 of Vermilion Parish.

10 (8) District 8 is composed of Precincts 30, 36, 37, 39, 42, 44, 45, 47, 48,
 11 49, 50, 51, 52, 53, 54, 55, 56 and 57 of Ascension Parish; Avoyelles Parish;
 12 Precincts 1-1, 1-2, 1-3, 1-4, 1-5, 1-6, 1-10, 1-13, 1-14, 1-15, 1-16, 1-17, 1-18, 1-19,
 13 1-21, 1-22, 1-23, 1-24, 1-25, 1-26, 1-27, 1-28, 1-29, 1-30, 1-31, 1-32, 1-36, 1-37,
 14 1-38, 1-45, 1-50, 1-51, 1-54, 1-58, 1-59, 1-61, 1-62, 1-63, 1-66, 1-67, 1-68, 1-70,
 15 1-73, 1-77, 1-78, 1-82, 1-83, 1-84, 1-85, 1-86, 1-88, 1-91, 1-92, 1-93, 1-94, 1-95,
 16 1-97, 1-100, 1-101, 1-104, 1-107, 2-1, 2-2, 2-3, 2-4, 2-5, 2-9, 2-10, 2-11, 2-12, 2-13,
 17 2-14, 2-15, 2-16, 2-17, 2-19, 2-20, 2-22, 2-23, 2-24, 2-25, 2-27, 2-28, 2-30, 2-31,
 18 2-32, 3-5, 3-8, 3-24, 3-42, 3-44, 3-50 and 3-54 of East Baton Rouge Parish; East
 19 Feliciana Parish; Precincts 1010, 1011, 1030, 1031, 1080, 1081, 1090, 1091, 1100,
 20 1101, 1110, 1120, 1160, 1162, 1170 and 1171 of Evangeline Parish; Precincts 1,
 21 2, 3, 6, 7, 8, 10, 11, 12, 13, 13A, 13B, 13C, 14, 14A, 14B, 15, 15A, 15B, 16, 17,
 22 17A, 18, 19, 19A, 20, 21, 22, 23, 24, 26, 26A, 27, 28, 29, 30, 31 and 32 of Iberville
 23 Parish; Precincts 5, 7, 14, 15, 16, 17, 18, 19, 20, 21, 22, 23, 24, 50, 51, 52, 53, 54,
 24 55, 56, 57, 58, 59, 60, 61, 62, 63, 64 and 68 of Lafayette Parish; Precincts 1, 2, 3,
 25 4, 5, 6, 7, 8, 9, 10A, 10B, 11, 12, 13A, 13B, 14, 15A, 15B, 19A, 21, 22A, 23 and 24
 26 of Pointe Coupee Parish; St. Helena Parish; Precincts 1-1, 1-2, 1-2A, 1-3, 1-3A,
 27 1-4, 1-4A, 1-5, 1-7, 1-8, 1-9, 1-10, 1-11, 1-12, 1-13, 1-14, 1-15, 1-15A, 1-16, 1-17,
 28 1-18, 1-19, 1-20, 1-21, 1-22, 1-23, 1-24, 1-25, 1-26A, 1-28, 1-28A, 1-29, 2-1, 2-4,
 29 2-5, 2-7, 3-2, 3-4, 3-6, 4-2, 4-4, 4-6, 4-8, 4-9, 4-10, 4-11, 5-1, 5-2, 5-3, 5-4, 5-5, 5-6,

1 **5-8, 6-1, 6-3, 6-4, 6-5, 6-6, 6-8, 6-9, 6-10, 6-11, 6-11A, 6-15, 6-16 and 6-16A of St.**
2 **Landry Parish; Precincts 1-3, 1-7, 2-1, 2-3, 2-4, 3-1, 3-1A, 3-1B, 3-2, 3-3, 3-4,**
3 **3-4A, 3-5, 3-6, 3-9, 4-1, 4-1A, 4-3, 4-4A, 4-6, 6-2A, 6-3, 7-1, 7-3, 7-4, 7-4A, 9-1**
4 **and 9-5 of St. Martin Parish; Precincts 1, 2, 6, 11, 15, 16, 17, 18, 26, 40, 40A, 41,**
5 **42, 42A, 43, 44, 45, 45A, 46, 47, 48, 49, 101, 102, 103, 105, 107, 109, 109A, 111,**
6 **111A, 115B, 119, 123, 125, 127, 127A, 129, 129A, 133, 141, 141A and 143 of**
7 **Tangipahoa Parish; Precincts 2-1, 3-2, 3-3B, 8-1 and 8-2 of Washington Parish;**
8 **West Baton Rouge Parish and West Feliciana Parish.**

9 Section 2. (A) The precincts referenced in this Act are those precincts identified as
10 Voting Districts (VTDs) in the 2010 Census Redistricting TIGER/Line Shapefiles for the
11 State of Louisiana.

12 (B) When a precinct referenced in this Act has been subdivided by action of the
13 parish governing authority on a nongeographic basis or subdivided by action of the parish
14 governing authority on a geographic basis in accordance with the provisions of R.S.18:532.1,
15 the enumeration in this Act of the general precinct designation shall include all
16 nongeographic and all geographic subdivisions thereof, however such subdivisions may be
17 designated. The territorial limits of the districts as provided in this Act shall continue in
18 effect without change regardless of any changes made to the precincts by the parish
19 governing authority.

20 Section 3. R.S. 17:2.2 is hereby repealed in its entirety.

21 Section 4.(A) Section 1 of this Act shall become effective solely for the purposes of
22 qualifying and election of members of the State Board of Elementary and Secondary
23 Education at the regularly scheduled elections in 2011, upon signature of this Act by the
24 governor or, if not signed by the governor, upon expiration of the time for bills to become
25 law without signature by the governor, as provided in Article III, Section 18 of the
26 Constitution of Louisiana. If this Act is vetoed by the governor and subsequently approved
27 by the legislature, Section 1 of this Act shall become effective for such purposes on the day
28 following such approval. The provisions of Section 1 of this Act shall be effective for all
29 other purposes at noon on January 9, 2012.

- 1 (B) Section 3 of this Act shall become effective at noon on January 9, 2012.
- 2 (C) The provisions of this Section and Section 2 of this Act shall become effective
- 3 upon signature of this Act by the governor or, if not signed by the governor, upon expiration
- 4 of the time for bills to become law without signature by the governor, as provided in Article
- 5 III, Section 18 of the Constitution of Louisiana. If this Act is vetoed by the governor and
- 6 subsequently approved by the legislature, the provisions of this Section and Section 2 of this
- 7 Act shall become effective on the day following such approval.

The original instrument and the following digest, which constitutes no part of the legislative instrument, were prepared by Yolanda J. Dixon.

DIGEST

Present constitution provides that BESE is composed of 11 members, eight elected from single-member districts and three appointed by the governor from the state at large.

Present law divides the state into eight districts for election of BESE members.

Proposed law redraws district boundaries for the eight BESE districts. Provides that for purposes of qualifying and election in 2011, proposed districts become effective upon signature of governor or lapse of time for gubernatorial action. For all other purposes, present districts remain in effect until noon, Jan. 9, 2012, when proposed districts become effective for all other purposes.

(Adds R.S. 17:2.1; repeals R.S. 17:2.2)

Plan Statistics

<u>Districts:</u>	<u># of Members</u>	<u>Actual Population</u>	<u>Ideal Population</u>	<u>Absolute Deviation</u>	<u>Relative Deviation</u>
District 1	1	539,366	566,671	-27,305	-4.818%
District 2	1	541,127	566,671	-25,544	-4.508%
District 3	1	555,851	566,671	-10,820	-1.909%
District 4	1	579,388	566,671	12,717	2.244%
District 5	1	588,310	566,671	21,639	3.819%
District 6	1	565,371	566,671	-1,300	-0.229%
District 7	1	594,300	566,671	27,629	4.876%
District 8	1	569,659	566,671	2,988	0.527%

Grand Total: 8 4,533,372 4,533,368

Ideal Population Per Member: 566671
 Number of Districts for Plan Type: 8

Range of District Populations: 539,366 to 594,300

Absolute Mean Deviation: 6,867
 Absolute Range: -27,305 to 27,629
 Absolute Overall Range: 54,934

Relative Mean Deviation: 2.87%
 Relative Range: -4.82% to 4.88%
 Relative Overall Range: 9.70%

<i>Ideal - Actual:</i>	<i>-4</i>
<i>Remainder:</i>	<i>4</i>
<i>Unassigned Population:</i>	<i>0</i>

Total Population

	Total Population	Total White	Total Black	Total Asian	Total American Indian	Total Other	Total Hispanic	Reg Total Jan 2011
District 1	539,366	439,862	62,615	15,741	4,328	16,820	47,471	329,453
	100.000%	81.552%	11.609%	2.918%	0.802%	3.118%	8.801%	78.346%
District 2	541,127	174,081	334,114	15,663	2,848	14,421	32,645	324,542
	100.000%	32.170%	61.744%	2.895%	0.526%	2.665%	6.033%	79.262%
District 3	555,851	393,830	121,496	11,475	15,193	13,857	27,832	325,209
	100.000%	70.852%	21.858%	2.064%	2.733%	2.493%	5.007%	78.796%
District 4	579,388	342,855	211,590	7,747	8,329	8,867	20,124	326,193
	100.000%	59.175%	36.520%	1.337%	1.438%	1.530%	3.473%	75.047%
District 5	588,310	364,779	208,580	5,400	4,388	5,163	12,175	354,134
	100.000%	62.005%	35.454%	0.918%	0.746%	0.878%	2.069%	79.902%
District 6	565,371	447,785	91,810	13,286	3,613	8,877	21,305	328,336
	100.000%	79.202%	16.239%	2.350%	0.639%	1.570%	3.768%	76.902%
District 7	594,300	458,357	115,739	7,528	5,109	7,567	16,985	354,541
	100.000%	77.126%	19.475%	1.267%	0.860%	1.273%	2.858%	79.796%
District 8	569,659	214,643	340,941	4,711	2,745	6,619	14,023	337,967
	100.000%	37.679%	59.850%	0.827%	0.482%	1.162%	2.462%	79.796%
Grand Total	4,533,372	2,836,192	1,486,885	81,551	46,553	82,191	192,560	2,680,375
	100.000%	62.563%	32.799%	1.799%	1.027%	1.813%	4.248%	78.480%

Voter Registration

	Reg Total Jan 2011	Reg White Jan 2011	Reg Black Jan 2011	Reg Other Jan 2011	Reg Dem Total Jan 2011	Reg Rep Total Jan 2011	Reg Other Total Jan 2011
District 1	329,453	277,793	27,080	24,580	109,514	135,612	84,327
	78.346%	84.319%	8.220%	7.461%	33.241%	41.163%	25.596%
District 2	324,542	106,195	197,269	21,078	216,278	38,361	69,903
	79.262%	32.721%	60.784%	6.495%	66.641%	11.820%	21.539%
District 3	325,209	246,435	63,669	15,105	166,815	80,042	78,352
	78.796%	75.777%	19.578%	4.645%	51.295%	24.612%	24.093%
District 4	326,193	202,155	111,673	12,365	160,682	94,355	71,156
	75.047%	61.974%	34.235%	3.791%	49.260%	28.926%	21.814%
District 5	354,134	232,893	112,137	9,104	178,758	100,557	74,819
	79.902%	65.764%	31.665%	2.571%	50.478%	28.395%	21.127%
District 6	328,336	275,291	40,306	12,739	126,093	121,966	80,277
	76.902%	83.844%	12.276%	3.880%	38.404%	37.147%	24.450%
District 7	354,541	284,474	58,794	11,273	169,677	99,147	85,717
	79.796%	80.237%	16.583%	3.180%	47.858%	27.965%	24.177%
District 8	337,967	135,881	193,149	8,937	227,169	48,150	62,648
	79.796%	40.205%	57.150%	2.644%	67.216%	14.247%	18.537%
Grand Total	2,680,375	1,761,117	804,077	115,181	1,354,986	718,190	607,199

Splits

	Total Population	Total White	Total Black	Total Asian	Total American Indian	Total Other	VAP Total	VAP White	VAP Black	VAP Asian	VAP American Indian	VAP Other	Reg Total Jan 2011	Reg White Jan 2011	Reg Black Jan 2011	Reg Other Jan 2011
District 1																
*Jefferson	255,334	200,820	30,143	10,390	1,883	12,098	204,756	164,744	21,451	7,945	1,428	9,188	152,525	127,685	11,486	13,354
*Orleans	49,364	42,773	4,016	1,542	253	780	41,426	36,115	3,202	1,293	195	621	32,783	27,733	2,098	2,952
St. Tammany	233,740	195,364	28,449	3,807	2,182	3,938	173,604	147,964	18,752	2,570	1,579	2,739	143,614	121,851	13,495	8,268
*Washington	928	905	7	2	10	4	726	707	5	2	8	4	531	524	1	6
District 1	539,366	439,862	62,615	15,741	4,328	16,820	420,512	349,530	43,410	11,810	3,210	12,552	329,453	277,793	27,080	24,580
	100.000%	81.552%	11.609%	2.918%	0.802%	3.118%	100.000%	83.120%	10.323%	2.808%	0.763%	2.985%	78.346%	84.319%	8.220%	7.461%
District 2																
*Assumption	11,009	4,626	6,227	17	37	102	8,196	3,678	4,405	12	23	78	7,222	3,076	4,115	31
*Jefferson	115,097	32,386	70,834	5,205	709	5,963	83,737	25,977	48,965	3,899	485	4,411	64,267	17,913	40,625	5,729
*Orleans	294,465	70,655	206,431	9,409	1,443	6,527	229,188	63,565	151,492	7,547	1,204	5,380	178,989	42,703	123,550	12,736
St. Charles	52,780	36,540	14,395	575	371	899	38,572	27,445	9,868	357	263	639	31,705	22,913	7,454	1,338
St. James	22,102	10,615	11,290	43	52	102	16,401	8,231	8,039	26	41	64	14,703	7,249	7,260	194
*St. John the Baptist	45,674	19,259	24,937	414	236	828	33,362	15,209	17,121	290	163	579	27,656	12,341	14,265	1,050
District 2	541,127	174,081	334,114	15,663	2,848	14,421	409,456	144,105	239,890	12,131	2,179	11,151	324,542	106,195	197,269	21,078
	100.000%	32.170%	61.744%	2.895%	0.526%	2.665%	100.000%	35.194%	58.587%	2.963%	0.532%	2.723%	79.262%	32.721%	60.784%	6.495%
District 3																
*Assumption	12,412	11,009	1,023	51	153	176	9,469	8,518	694	39	102	116	7,566	7,017	471	78
Iberia	73,240	45,551	24,091	1,926	428	1,244	53,398	35,137	15,754	1,308	307	892	45,139	30,016	13,917	1,206
*Iberville	3,279	3,100	81	7	35	56	2,558	2,429	52	6	26	45	2,204	2,139	39	26
*Jefferson	62,121	38,909	16,022	3,048	810	3,332	46,662	30,552	10,886	2,266	576	2,382	35,285	23,529	8,022	3,734
Lafourche	96,318	76,445	13,363	855	3,457	2,198	72,652	59,362	8,945	612	2,187	1,546	53,711	45,827	6,316	1,568
Plaquemines	23,042	16,246	4,951	844	556	445	16,713	12,086	3,367	583	396	281	14,534	10,541	3,075	918
*Pointe Coupee	5,767	4,855	823	27	26	36	4,385	3,721	611	16	22	15	3,863	3,307	503	53
St. Bernard	35,897	26,579	6,705	873	522	1,218	26,720	20,490	4,338	640	370	882	23,358	19,332	2,829	1,197
*St. John the Baptist	250	242	7	0	1	0	206	199	6	0	1	0	129	125	0	4
*St. Landry	11,251	10,007	1,117	43	45	39	8,255	7,425	759	25	31	15	7,756	6,857	783	116
*St. Martin	32,107	25,084	5,966	359	251	447	23,737	19,128	3,893	235	162	319	20,700	16,780	3,196	724
St. Mary	54,650	32,406	18,290	1,058	1,269	1,627	40,746	25,191	12,797	773	837	1,148	31,845	20,072	10,527	1,246
Terrebonne	111,860	78,591	22,072	1,333	7,375	2,489	82,737	60,621	14,647	986	4,725	1,758	59,299	45,337	10,268	3,694
*Vermilion	33,657	24,806	6,985	1,051	265	550	24,487	18,868	4,345	751	182	341	19,820	15,556	3,723	541
District 3	555,851	393,830	121,496	11,475	15,193	13,857	412,725	303,727	81,094	8,240	9,924	9,740	325,209	246,435	63,669	15,105
	100.000%	70.852%	21.858%	2.064%	2.733%	2.493%	100.000%	73.591%	19.648%	1.996%	2.405%	2.360%	78.796%	75.777%	19.578%	4.645%
District 4																
Bienville	14,353	7,935	6,153	44	132	89	11,012	6,279	4,544	31	105	53	9,256	5,112	4,085	59

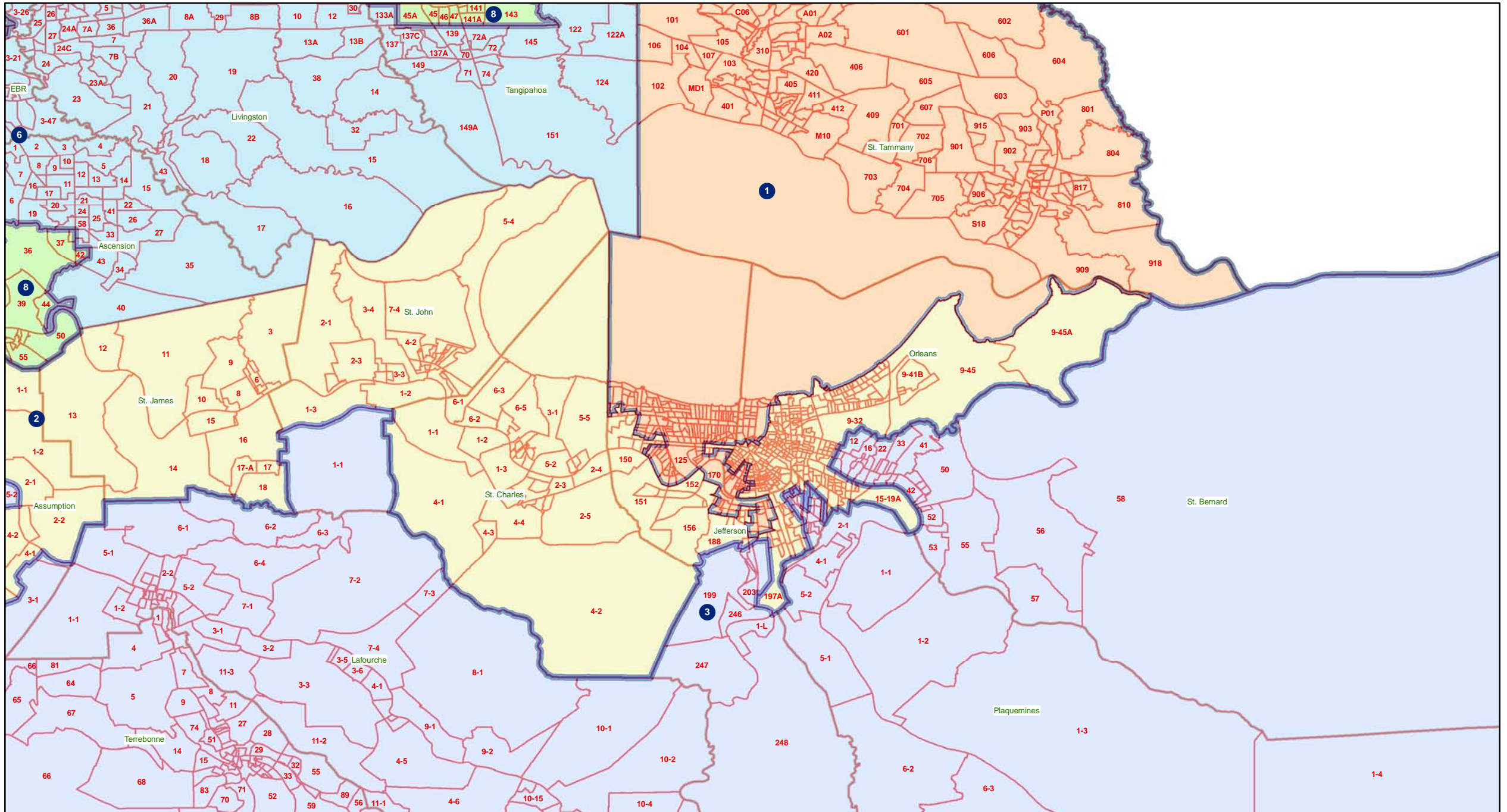
Splits

	Total Population	Total White	Total Black	Total Asian	Total American Indian	Total Other	VAP Total	VAP White	VAP Black	VAP Asian	VAP American Indian	VAP Other	Reg Total Jan 2011	Reg White Jan 2011	Reg Black Jan 2011	Reg Other Jan 2011
District 4																
Bossier	116,979	84,430	25,606	2,516	1,139	3,288	86,945	64,692	17,413	1,836	837	2,167	60,834	46,663	11,491	2,680
Caddo	254,969	124,942	122,229	3,230	1,906	2,662	192,315	100,748	85,902	2,363	1,455	1,847	151,374	79,163	66,708	5,503
De Soto	26,656	15,456	10,600	54	331	215	20,006	12,055	7,495	42	273	141	16,396	9,663	6,191	542
Natchitoches	39,566	21,494	16,778	197	649	448	29,966	17,226	11,771	151	477	341	22,982	13,181	8,878	923
Red River	9,091	5,360	3,633	16	43	39	6,778	4,256	2,450	12	34	26	5,981	3,566	2,377	38
Sabine	24,233	17,155	4,234	84	2,636	124	18,311	13,544	2,835	63	1,796	73	13,837	10,811	2,032	994
Vernon	52,334	39,614	8,313	1,426	1,177	1,804	37,822	29,416	5,349	1,026	848	1,183	21,620	17,881	2,495	1,244
Webster	41,207	26,469	14,044	180	316	198	31,497	20,907	10,110	120	241	119	23,913	16,115	7,416	382
District 4	579,388	342,855	211,590	7,747	8,329	8,867	434,652	269,123	147,869	5,644	6,066	5,950	326,193	202,155	111,673	12,365
	100.000%	59.175%	36.520%	1.337%	1.438%	1.530%	100.000%	61.917%	34.020%	1.299%	1.396%	1.369%	75.047%	61.974%	34.235%	3.791%
District 5																
Caldwell	10,132	8,213	1,778	30	64	47	7,758	6,314	1,336	23	51	34	6,324	5,351	911	62
Catahoula	10,407	6,985	3,318	9	53	42	8,057	5,543	2,438	8	43	25	6,380	4,749	1,596	35
Claiborne	17,195	8,167	8,820	62	99	47	13,815	6,781	6,889	37	80	28	8,877	4,908	3,872	97
Concordia	20,822	11,959	8,604	59	123	77	15,589	9,298	6,117	41	88	45	12,696	7,997	4,529	170
East Carroll	7,759	2,245	5,398	47	31	38	5,766	1,845	3,830	37	25	29	5,330	1,617	3,664	49
Franklin	20,767	13,930	6,620	65	82	70	15,450	10,838	4,471	42	63	36	13,466	9,408	3,978	80
Grant	22,309	18,149	3,602	97	385	76	17,158	13,788	2,978	67	274	51	11,900	10,361	1,284	255
Jackson	16,274	11,084	4,947	67	83	93	12,570	8,681	3,724	39	65	61	9,846	6,879	2,805	162
La Salle	14,890	12,689	1,808	40	215	138	11,366	9,677	1,402	35	143	109	8,427	7,648	621	158
Lincoln	46,735	25,775	19,184	874	230	672	37,130	20,875	14,821	749	183	502	24,016	14,604	8,519	893
Madison	12,093	4,498	7,452	33	55	55	9,071	3,644	5,312	20	45	50	7,634	2,780	4,764	90
Morehouse	27,979	14,345	13,281	142	102	109	21,061	11,583	9,230	102	79	67	18,681	10,048	8,329	304
Ouachita	153,720	92,884	57,194	1,722	705	1,215	113,347	72,316	38,405	1,248	549	829	94,408	59,945	30,997	3,466
Rapides	131,613	83,373	43,150	1,912	1,682	1,496	97,599	64,579	29,368	1,377	1,270	1,005	78,056	53,328	22,107	2,621
Richland	20,725	12,879	7,544	92	96	114	15,440	9,999	5,237	65	70	69	12,939	8,173	4,646	120
Tensas	5,252	2,202	2,991	13	15	31	3,923	1,796	2,085	11	9	22	4,131	1,807	2,304	20
Union	22,721	15,682	6,242	49	115	633	17,493	12,568	4,439	31	91	364	14,964	10,863	3,709	392
West Carroll	11,604	9,497	1,870	34	86	117	8,746	7,254	1,330	24	62	76	7,167	6,017	1,096	54
Winn	15,313	10,223	4,777	53	167	93	11,871	8,018	3,619	44	129	61	8,892	6,410	2,406	76
District 5	588,310	364,779	208,580	5,400	4,388	5,163	443,210	285,397	147,031	4,000	3,319	3,463	354,134	232,893	112,137	9,104
	100.000%	62.005%	35.454%	0.918%	0.746%	0.878%	100.000%	64.393%	33.174%	0.903%	0.749%	0.781%	79.902%	65.764%	31.665%	2.571%
District 6																
*Ascension	86,909	72,113	11,195	1,118	521	1,962	61,817	52,140	7,356	724	364	1,233	51,810	44,051	5,457	2,302
*East Baton Rouge	248,632	179,105	53,381	10,724	1,256	4,166	196,394	146,839	37,185	8,302	967	3,101	146,610	117,166	22,529	6,915

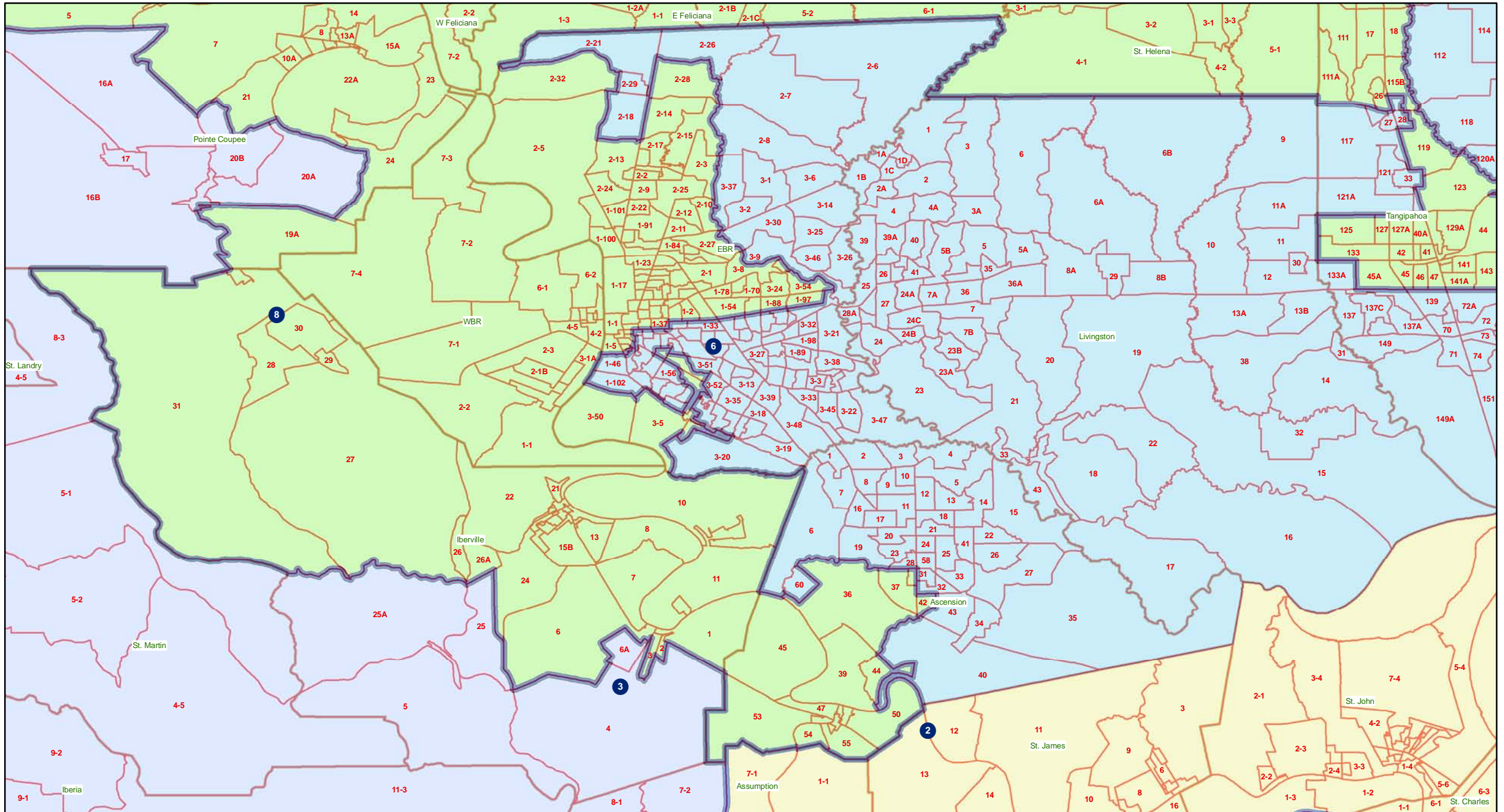
Splits

	Total Population	Total White	Total Black	Total Asian	Total American Indian	Total Other	VAP Total	VAP White	VAP Black	VAP Asian	VAP American Indian	VAP Other	Reg Total Jan 2011	Reg White Jan 2011	Reg Black Jan 2011	Reg Other Jan 2011
District 6																
Livingston	128,026	117,601	6,941	906	1,055	1,523	92,696	85,855	4,535	565	782	959	71,580	66,508	2,985	2,087
*Tangipahoa	63,094	51,691	9,553	407	527	916	46,863	39,425	6,182	262	402	592	37,580	31,996	4,480	1,104
*Washington	38,710	27,275	10,740	131	254	310	29,184	21,168	7,524	93	199	200	20,756	15,570	4,855	331
District 6	565,371	447,785	91,810	13,286	3,613	8,877	426,954	345,427	62,782	9,946	2,714	6,085	328,336	275,291	40,306	12,739
	100.000%	79.202%	16.239%	2.350%	0.639%	1.570%	100.000%	80.905%	14.705%	2.330%	0.636%	1.425%	76.902%	83.844%	12.276%	3.880%
District 7																
Acadia	61,773	49,127	11,645	196	313	492	44,910	36,554	7,668	131	213	344	37,256	30,346	6,441	469
Allen	25,764	18,435	6,192	220	749	168	19,870	14,288	4,828	154	495	105	13,110	10,190	2,397	523
Beauregard	35,654	29,321	5,016	353	652	312	26,359	21,902	3,569	239	460	189	19,924	16,703	2,304	917
Calcasieu	192,768	136,514	49,825	2,550	1,626	2,253	143,756	105,077	34,139	1,846	1,187	1,507	117,844	86,021	27,975	3,848
Cameron	6,839	6,546	135	10	60	88	5,183	5,011	74	9	38	51	5,536	5,272	188	76
*Evangeline	24,011	19,444	4,012	89	134	332	17,699	14,410	2,838	67	99	285	14,582	12,317	2,134	131
Jefferson Davis	31,594	25,125	5,836	98	275	260	23,196	18,871	3,891	66	180	188	19,337	15,808	3,132	397
*Lafayette	182,467	143,916	30,353	3,742	1,122	3,334	138,525	112,191	20,357	2,768	825	2,384	106,778	89,361	12,872	4,545
*St. Landry	9,088	7,813	1,056	47	67	105	6,775	5,956	679	34	42	64	5,241	4,661	446	134
*Vermilion	24,342	22,116	1,669	223	111	223	18,035	16,556	1,112	151	77	139	14,933	13,795	905	233
District 7	594,300	458,357	115,739	7,528	5,109	7,567	444,308	350,816	79,155	5,465	3,616	5,256	354,541	284,474	58,794	11,273
	100.000%	77.126%	19.475%	1.267%	0.860%	1.273%	100.000%	78.958%	17.815%	1.230%	0.814%	1.183%	79.796%	80.237%	16.583%	3.180%
District 8																
*Ascension	20,306	6,459	13,271	116	65	395	14,643	5,197	9,055	92	48	251	12,294	4,181	7,799	314
Avoyelles	42,073	28,188	12,876	174	641	194	31,790	21,850	9,247	126	431	136	23,105	16,874	5,790	441
*East Baton Rouge	191,539	35,822	149,153	2,840	657	3,067	140,112	31,036	104,111	2,169	519	2,277	106,007	20,985	81,281	3,741
East Feliciana	20,267	10,783	9,250	67	127	40	16,075	8,775	7,123	58	94	25	13,411	7,629	5,126	656
*Evangeline	9,973	3,995	5,850	50	27	51	7,118	3,209	3,823	30	18	38	6,825	2,950	3,839	36
*Iberville	30,108	13,180	16,539	117	82	190	23,327	10,825	12,206	79	72	145	18,248	8,275	9,715	258
*Lafayette	39,111	9,790	28,559	149	168	445	28,790	8,375	19,846	116	126	327	24,346	6,271	17,283	792
*Pointe Coupee	17,035	9,155	7,604	42	45	189	12,942	7,352	5,409	28	35	118	11,601	6,277	5,193	131
St. Helena	11,203	5,034	6,014	16	72	67	8,440	4,036	4,291	11	60	42	8,432	3,816	4,517	99
*St. Landry	63,045	28,795	32,980	305	294	671	45,674	22,212	22,559	207	205	491	43,552	20,383	22,362	807
*St. Martin	20,053	9,229	10,431	119	99	175	14,652	7,192	7,197	81	65	117	13,149	6,086	6,690	373
*Tangipahoa	58,003	28,515	27,828	548	307	805	43,814	23,706	18,877	448	229	554	31,084	16,583	13,509	992
*Washington	7,530	3,302	4,137	12	41	38	5,395	2,488	2,845	6	31	25	4,321	1,879	2,383	59
West Baton Rouge	23,788	14,271	9,132	114	85	186	17,861	11,067	6,517	92	67	118	14,796	9,244	5,408	144
West Feliciana	15,625	8,125	7,317	42	35	106	12,907	6,412	6,364	24	33	74	6,796	4,448	2,254	94
District 8	569,659	214,643	340,941	4,711	2,745	6,619	423,540	173,732	239,470	3,567	2,033	4,738	337,967	135,881	193,149	8,937
	100.000%	37.679%	59.850%	0.827%	0.482%	1.162%	100.000%	41.019%	56.540%	0.842%	0.480%	1.119%	79.796%	40.205%	57.150%	2.644%

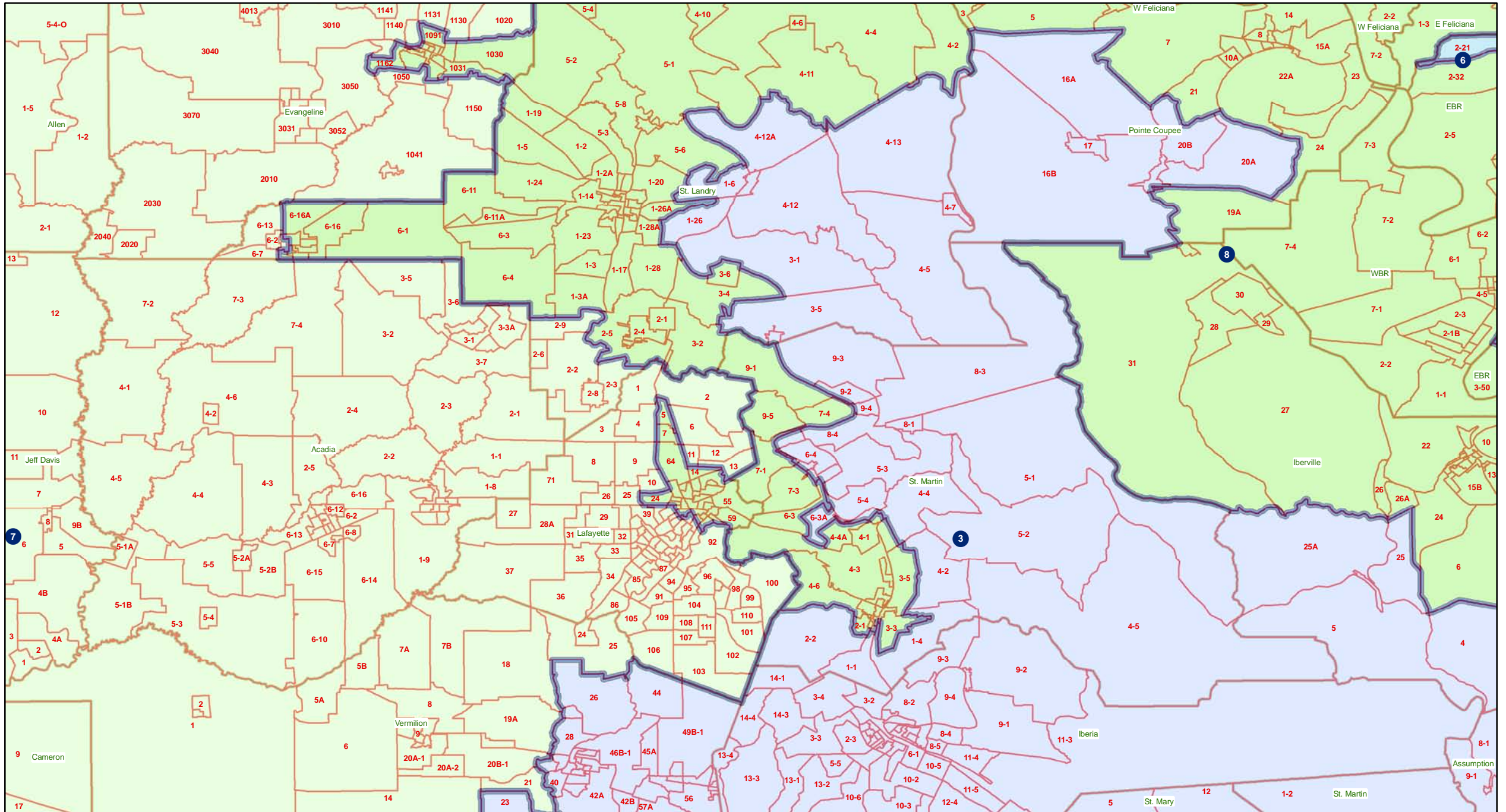
BESE-Orleans-Jefferson



BESE-East Baton Rouge Area



BESE-Lafayette Area



BESE-Avoyelles-Rapides

