

2022 Regular Session

HOUSE BILL NO. 712

BY REPRESENTATIVE DUPLESSIS

REAPPORTIONMENT/CONGRESS: Provides for redistricting of Louisiana congressional districts

1 AN ACT

2 To enact R.S. 18:1276 and to repeal R.S. 18:1276.1, relative to congressional districts; to
3 provide for the redistricting of Louisiana's congressional districts; to provide with
4 respect to positions and offices, other than congressional, which are based upon
5 congressional districts; to provide for the effectiveness; and to provide for related
6 matters.

7 Be it enacted by the Legislature of Louisiana:

8 Section 1. R.S. 18:1276 is hereby enacted to read as follows:

9 §1276. Congressional districts

10 Louisiana shall be divided into six congressional districts, and the qualified
11 electors of each district shall elect one representative to the United States House of
12 Representatives. The districts shall be composed as follows:

- 13 (1) District 1 is composed of Precincts 1-1, 1-3, 2-1, 3-1, 3-2, 4-1, 4-2, 4-3,
- 14 4-4, 5-4, 6-1, 6-3, 6-5, 7-1, 7-2, 7-4, 7-5, 8-2, 8-3, 9-1, 9-2, 9-4, 9-5, 10-1, 10-2, 10-3,
- 15 10-4, 11-2, 12-1, and 12-3 of Iberia Parish; Precincts 4, 5, 6, 13, 15B, 24, and 25 of
- 16 Iberville Parish; Precincts 1, 2, 3, 4, 5, 7, 8, 9, 10, 11, 12, 13, 14, 15, 16, 17, 18, 19,
- 17 20, 21, 22, 23, 24, 25, 26, 27, 28, 29, 30, 31, 32, 33, 34, 35, 36, 37, 38, 39, 40, 41, 42,
- 18 43, 44, 45, 46, 51, 52, 53, 54, 55, 56, 57, 58, 59, 60, 61, 62, 63, 64, 65, 66, 67, 68, 69,
- 19 70, 71, 72, 73, 74, 75, 76, 77, 78, 79, 80, 81, 82, 83, 84, 85, 86, 87, 88, 89, 90, 91, 92,
- 20 93, 94, 95, 96, 97, 98, 99, 100, 101, 102, 103, 105, 106, 117, 118, 119, 120, 121, 122,

1 123, 124, 125A, 125B, 126, 127, 128, 129, 130, 132, 134, 136, 138, 246, 247, 248,
2 1-GI, 1-H, 2-H, 3-H, 4-H, 5-H, 6-H, 7-H, 8-H, 9-H, 1-K, 2-K, 3-K, 4-K, 5-K, 6-KA,
3 6-KB, 7-KA, 7-KB, 8-K, 9-K, 10-K, 11-K, 12-K, 13-KA, 13-KB, 14-K, 15-K, 16-K,
4 17-K, 18-K, 19-K, 20-K, 25-K, 27-K, 28-K, 34-K, 35-K, and 1-L of Jefferson Parish;
5 Lafourche Parish; Precincts 3-14, 3-19, 3-20, 4-7, 4-8, 4-9, 4-11, 4-14, 4-15, 4-17,
6 4-17A, 4-18, 4-20, 4-21, 4-22, 4-23, 5-11, 5-12, 5-13, 5-15, 5-16, 5-17, 5-18, 6-8,
7 6-9, 9-45, 9-45A, 13-1, 13-2, 13-3, 13-4, 13-5, 13-6, 13-7, 13-8, 13-9, 13-10, 13-11,
8 13-12, 13-13, 13-14, 13-15, 13-16, 14-1, 14-2, 14-3, 14-4, 14-5, 14-6, 14-7, 14-8,
9 14-9, 14-10, 14-11, 14-12, 14-13A, 14-14, 14-15, 14-16, 14-17, 14-18A, 14-19,
10 14-20, 14-21, 16-1, 16-1A, 16-2, 16-3, 16-4, 16-5, 16-6, 16-7, 16-8, 17-1, 17-2,
11 17-17, 17-18, 17-18A, 17-19, and 17-20 of Orleans Parish; Plaquemines Parish; St.
12 Bernard Parish; Precincts 1 and 2 of St. Martin Parish; St. Mary Parish; Precincts
13 705, 706, 802, 803, 805, 806, 809, 811, 813, 814, 815, 816, 818, 904, 905, 906, 907,
14 909, 910, 911, 912, 914, 917, 918, 921, 922, S01, S02, S03, S04, S05, S06, S07, S08,
15 S09, S10, S11, S13, S15, S16, S17, S18, S19, S20, S21, S22, S23, S24, and S25 of
16 St. Tammany Parish; and Terrebonne Parish.

17 (2) District 2 is composed of Precincts 6, 28, 30, 36, 37, 39, 40, 44, 45, 47,
18 48, 50, 51, 52, 53, 54, 55, 57, 63, 65, and 66 of Ascension Parish; Assumption
19 Parish; Precincts 1-1, 1-3, 1-4, 1-5, 1-6, 1-10, 1-13, 1-15, 1-16, 1-32, 1-37, 1-38,
20 1-45, 1-46, 1-51, 1-57, 1-67, 1-68, 1-76, 1-102, 1-107, 3-5, 3-20, 3-23, 3-44, 3-50,
21 3-55, 3-56, 3-57, 3-63, 3-65, 3-69, and 3-70 of East Baton Rouge Parish; Precincts
22 1, 3, 7, 9, 10, 11, 12, 13C, 14, 14A, 15, 16, 17, 18, 19, 20, 21, 22, 23, and 26 of
23 Iberville Parish; Precincts 104, 108, 115, 116, 131, 133, 150, 151, 152, 153, 154,
24 155, 156, 157A, 157B, 170, 171, 172, 173, 174, 175, 176, 177, 178, 179A, 179B,
25 180, 181, 182, 183, 184, 185A, 185B, 187, 188, 189, 190, 191, 192, 193A, 193B,
26 194A, 194B, 195, 196, 197A, 197B, 198, 199, 200, 201, 202, 203, 204, 205, 210,
27 211, 212, 213A, 213B, 213C, 214A, 214B, 215, 216A, 216B, 216C, 217, 225, 226,
28 227, 228, 229, 230, 231, 232A, 232B, 234, 235, 236, 237, 238A, 238B, 1-G, 2-G,
29 3-G, 4-G, 5-G, 6-G, 7-G, 8-G, 9-G, 10-G, 11-G, 12-G, 13-G, 21-K, 22-K, 23-K,

1 24-K, 26-K, 29-K, 30-K, 31-K, 33-K, 1-W, 2-W, 3-W, 4-W, 5-W, 6-W, and 7-W of
2 Jefferson Parish; Precincts 1-1, 1-2, 1-5, 1-6, 2-1, 2-2, 2-4, 2-6, 2-7, 3-1, 3-8, 3-9,
3 3-12, 3-15, 3-18, 4-2, 4-3, 4-5, 4-6, 5-1, 5-2, 5-3, 5-5, 5-7, 5-8, 5-9, 5-10, 6-1, 6-2,
4 6-4, 6-6, 6-7, 7-1, 7-2, 7-4, 7-5, 7-6, 7-7, 7-8, 7-9A, 7-10, 7-11, 7-12, 7-13, 7-14,
5 7-15, 7-16, 7-17, 7-18, 7-19, 7-20, 7-21, 7-23, 7-24, 7-25, 7-25A, 7-26, 7-27, 7-27B,
6 7-28, 7-28A, 7-29, 7-30, 7-32, 7-33, 7-35, 7-37, 7-37A, 7-40, 7-41, 7-42, 8-1, 8-2,
7 8-4, 8-6, 8-7, 8-8, 8-9, 8-12, 8-13, 8-14, 8-15, 8-19, 8-20, 8-21, 8-22, 8-23, 8-24,
8 8-25, 8-26, 8-27, 8-28, 8-30, 9-1, 9-3, 9-4, 9-5, 9-6, 9-7, 9-8, 9-9, 9-10, 9-11, 9-12,
9 9-13, 9-14, 9-15, 9-16, 9-17, 9-19, 9-21, 9-23, 9-25, 9-26, 9-28, 9-28C, 9-29, 9-30,
10 9-30A, 9-31, 9-31A, 9-31B, 9-31D, 9-32, 9-33, 9-34A, 9-35, 9-35A, 9-36, 9-36B,
11 9-37, 9-38, 9-38A, 9-39, 9-39B, 9-40, 9-40A, 9-40C, 9-41, 9-41A, 9-41B, 9-41C,
12 9-41D, 9-42, 9-42C, 9-43A, 9-43B, 9-43C, 9-43E, 9-43F, 9-43G, 9-43H, 9-43I,
13 9-43J, 9-43K, 9-43L, 9-43M, 9-43N, 9-44, 9-44A, 9-44B, 9-44D, 9-44E, 9-44F,
14 9-44G, 9-44I, 9-44J, 9-44L, 9-44M, 9-44N, 9-44O, 9-44P, 9-44Q, 10-3, 10-6, 10-7,
15 10-8, 10-9, 10-11, 10-12, 10-13, 10-14, 11-2, 11-3, 11-4, 11-5, 11-8, 11-9, 11-10,
16 11-11, 11-12, 11-13, 11-14, 11-17, 12-1, 12-2, 12-3, 12-4, 12-5, 12-6, 12-7, 12-8,
17 12-9, 12-10, 12-11, 12-12, 12-13, 12-14, 12-16, 12-17, 12-19, 14-23, 14-24A, 14-25,
18 14-26, 15-1, 15-2, 15-3, 15-5, 15-6, 15-8, 15-9, 15-10, 15-11, 15-12, 15-12A, 15-13,
19 15-13A, 15-13B, 15-14, 15-14A, 15-14B, 15-14C, 15-14D, 15-14E, 15-14F, 15-14G,
20 15-15, 15-15A, 15-15B, 15-16, 15-17, 15-17A, 15-17B, 15-18, 15-18A, 15-18B,
21 15-18C, 15-18D, 15-18E, 15-18F, 15-19, 15-19A, 15-19B, 15-19C, 16-9, 17-3, 17-4,
22 17-5, 17-6, 17-7, 17-8, 17-9, 17-10, 17-11, 17-12, 17-13, 17-13A, 17-14, 17-15, and
23 17-16 of Orleans Parish; St. Charles Parish; St. James Parish; and St. John the
24 Baptist Parish.

25 (3) District 3 is composed of Acadia Parish; Allen Parish; Beauregard Parish;
26 Calcasieu Parish; Cameron Parish; Precincts 1020, 1030, 1040, 1041, 1050, 1060,
27 1130, 1140, 1161, 1171, 2010, 2010A, 2020, 2030, 2040, 3010, 3020, 3030, 3031,
28 3032, 3040, 3050, 3051, 3052, 3060, 3070, 3071, 4001, 4010, 4011, 4012, 4020,
29 4021, 4030, 4040, 5004, 5010, 5020, 5030, 5040, 5041, and 5050 of Evangeline

1 Parish; Precincts 2-3, 3-3, 10-7, 13-1, 13-3, 14-1, and 14-3 of Iberia Parish; Jefferson
 2 Davis Parish; Precincts 3, 25, 26, 27, 28, 29, 30, 31, 32, 33, 34, 35, 36, 37, 38, 39,
 3 40, 41, 42, 43, 44, 45, 46, 47, 48, 49, 65, 66, 67, 69, 70, 71, 72, 73, 74, 75, 76, 77, 78,
 4 79, 80, 81, 82, 83, 84, 85, 86, 87, 88, 89, 90, 91, 92, 93, 94, 95, 96, 97, 98, 99, 100,
 5 101, 102, 103, 104, 105, 106, 107, 108, 109, 110, 111, 114, 115, 116, 117, 118, 119,
 6 120, 121, 124, 125, 126, 127, and 128 of Lafayette Parish; Precincts C22, C23, C31,
 7 C32, C33, C34, C35, C36, C37-A, C37-B, C41, C42, N6, N7, N11, N12, N13-A,
 8 N13-B, N14-A, N14-B, N15, N16, N17, N18-A, N18-B, N19, N20, N21, N22, N23,
 9 N24, N25, N26, S1, S2, S4, S5, S6A, S6B, S7, S8, S9, S10, S11, S13, S14, S21, S22,
 10 S23, S24, S25, S26, S27, S28, and S29 of Rapides Parish; Precincts 3, 4, 5, 6, 7, 8,
 11 9, 10, 11, 12, 13, 14, 15, 16, 19, 20, 21, 22, 24, and 25 of St. Martin Parish;
 12 Vermilion Parish; and Precincts 1-1, 1-1B, 1-2A, 1-4, 1-4A, 1-5, 1-6A, 1-7, 1-7A,
 13 1-7B, 1-8, 1-8A, 1-8C, 1-8E, 1-8F, 1-9, 4-1, 4-2, 4-3, 4-3A, 4-3C, 4-3E, 4-3F, 4-3G,
 14 4-3J, 4-3K, 4-3L, 4-3M, 4-3N, 5-1, 5-1A, 5-2, 5-2A, 6-1, 6-2, 6-3, 6-4, 7-1, 7-2A,
 15 7-3, 7-4, 7-4A, 7-5, 7-5A, 7-5C, 8-1, 8-2, and 8-3 of Vernon Parish.

16 (4) District 4 is composed of Bienville Parish; Bossier Parish; Caddo Parish;
 17 Caldwell Parish; Claiborne Parish; De Soto Parish; Grant Parish; Jackson Parish; La
 18 Salle Parish; Lincoln Parish; Natchitoches Parish; Precincts 1, 1A, 2, 4, 6, 7, 25, 31,
 19 32, 33, 34, 35, 36, 37, 38, 39, 40, 41, 42, 43, 44, 44A, 45, 46, 48, 49, 50, 51, 51A, 52,
 20 52A, 53, 54, 55, 56, 56A, 57, 58, 61, 64, 71, 75, 76, 77, and 78 of Ouachita Parish;
 21 Red River Parish; Sabine Parish; Union Parish; Precincts 1-2, 1-3, 1-3B, 1-3C, 1-3D,
 22 1-4B, 1-4C, 1-4D, 1-5A, 1-6, 1-6B, 2-1, 2-1A, 2-2, 2-2A, 2-3, 2-3A, 2-4, 2-4E, 3-1,
 23 3-2, 3-3, 3-4, 3-5, and 7-2 of Vernon Parish; Webster Parish; and Winn Parish.

24 (5) District 5 is composed of Avoyelles Parish; Catahoula Parish; Concordia
 25 Parish; Precincts 1-2, 1-11, 1-14, 1-17, 1-18, 1-19, 1-20, 1-21, 1-22, 1-23, 1-24, 1-25,
 26 1-26, 1-27, 1-28, 1-29, 1-30, 1-31, 1-33, 1-36, 1-50, 1-54, 1-55, 1-58, 1-60, 1-61,
 27 1-62, 1-63, 1-70, 1-71, 1-74, 1-77, 1-78, 1-81, 1-82, 1-83, 1-84, 1-85, 1-86, 1-87,
 28 1-88, 1-91, 1-92, 1-93, 1-94, 1-95, 1-97, 1-100, 1-101, 1-104, 2-1, 2-2, 2-3, 2-4, 2-5,
 29 2-6, 2-7, 2-9, 2-10, 2-11, 2-12, 2-13, 2-14, 2-15, 2-16, 2-17, 2-18, 2-19, 2-20, 2-21,

1 2-22, 2-23, 2-24, 2-25, 2-26, 2-27, 2-28, 2-29, 2-30, 2-31, 2-32, 2-33, 2-34, 2-35,
2 2-36, 2-37, 3-8, 3-12, 3-24, 3-28, 3-32, 3-54, 3-58, and 3-72 of East Baton Rouge
3 Parish; East Carroll Parish; East Feliciana Parish; Precincts 1010, 1031, 1080, 1081,
4 1090, 1091, 1100, 1101, 1110, 1120, 1150, 1160, 1162, and 1170 of Evangeline
5 Parish; Franklin Parish; Precincts 27, 28, 29, 31, and 32 of Iberville Parish; Precincts
6 1, 2, 4, 5, 6, 7, 8, 9, 10, 11, 12, 13, 14, 15, 16, 17, 18, 19, 20, 21, 22, 23, 24, 51, 52,
7 53, 54, 55, 56, 57, 58, 59, 60, 61, 62, 63, 64, 68, 112, 113, 122, and 123 of Lafayette
8 Parish; Madison Parish; Morehouse Parish; Precincts 3, 5, 8, 9, 9A, 10, 11, 12, 13,
9 14, 15, 16, 17, 18, 19, 20, 21, 22, 23, 24, 26, 27, 27A, 28, 29, 30, 47, 59, 60, 62, 63,
10 65, 65A, 66, 67, 68, 69, 70, 72, 73, 74, and 79 of Ouachita Parish; Pointe Coupee
11 Parish; Precincts C1, C2, C3, C4, C5, C6, C7, C8, C9, C10, C11-A, C11-B, C13,
12 C14, C15, C17, C18, C19, C20, C21, C24, C25, C26, C27, C28, C30, C38-A, C38-B,
13 C39, C40, N1, N2, N3, N4, N5, N8, N9, N10, N27, N28, N29, S15, S16, S17, S18,
14 S19, and S20 of Rapides Parish; Richland Parish; St. Helena Parish; St. Landry
15 Parish; Precincts 17, 18, 23, 26, 27, 28, and 29 of St. Martin Parish; Precincts 1, 2,
16 6, 11, 15, 16, 17, 18, 26, 101, 102, 104, 105, 106, 106A, 107, 109, 111A, and 115B
17 of Tangipahoa Parish; Tensas Parish; West Baton Rouge Parish; West Carroll Parish;
18 and West Feliciana Parish.

19 (6) District 6 is composed of Precincts 1, 2, 3, 4, 5, 7, 8, 9, 10, 11, 12, 13, 14,
20 15, 16, 17, 18, 20, 21, 22, 23, 24, 25, 26, 27, 31, 32, 33, 34, 35, 41, 42, 43, 58, 61, 62,
21 64, 71, 72, 73, 76, 77, and 78 of Ascension Parish; Precincts 1-7, 1-8, 1-9, 1-12,
22 1-34, 1-35, 1-39, 1-40, 1-41, 1-42, 1-43, 1-44, 1-47, 1-48, 1-49, 1-52, 1-53, 1-56,
23 1-59, 1-64, 1-65, 1-66, 1-69, 1-72, 1-73, 1-75, 1-79, 1-80, 1-89, 1-90, 1-98, 1-99,
24 1-103, 1-105, 2-8, 3-1, 3-2, 3-3, 3-4, 3-6, 3-7, 3-9, 3-10, 3-11, 3-13, 3-14, 3-15, 3-16,
25 3-17, 3-18, 3-19, 3-21, 3-22, 3-25, 3-26, 3-27, 3-29, 3-30, 3-31, 3-33, 3-34, 3-35,
26 3-36, 3-37, 3-38, 3-39, 3-40, 3-41, 3-43, 3-45, 3-46, 3-47, 3-48, 3-49, 3-51, 3-52,
27 3-53, 3-59, 3-60, 3-61, 3-62, 3-64, 3-66, 3-67, 3-68, and 3-71 of East Baton Rouge
28 Parish; Livingston Parish; Precincts 101, 102, 103, 104, 105, 106, 107, 108, 110,
29 111, 112, 113, 114, 115, 116, 118, 201, 202, 203, 204, 205, 206, 207, 301, 302, 303,

1 304, 305, 306, 307, 308, 309, 310, 312, 313, 314, 401, 402, 403, 404, 405, 406, 407,
2 408, 409, 410, 411, 412, 413, 414, 415, 416, 417, 418, 419, 420, 421, 422, 426, 427,
3 429, 430, 501, 502, 503, 504, 505, 601, 602, 603, 604, 605, 606, 609, 701, 702, 703,
4 704, 801, 804, 807, 808, 810, 812, 817, 901, 902, 903, 913, 915, 916, A01, A02,
5 A03, A04, C01, C02, C03, C04, C05, C06, C07, C08, C09, C10, C11, F01, M01,
6 M02, M03, M04, M05, M06, M07, M08, M09, M10, M11, M12, MD1, and P01 of
7 St. Tammany Parish; Precincts 27, 28, 33, 40, 40A, 41, 42, 42A, 43, 44, 45, 45A, 46,
8 47, 48, 49, 70, 70A, 71, 72, 72A, 73, 74, 104A, 108, 110, 112, 114, 116, 117, 118,
9 119, 120, 120A, 120B, 121, 121A, 122, 122A, 122B, 123, 124, 124A, 125, 127,
10 127A, 129, 129A, 133, 133A, 137, 137A, 137B, 137C, 137D, 139, 141, 141A, 143,
11 143A, 145, 147, 149, 149A, and 151 of Tangipahoa Parish; and Washington Parish.

12 Section 2. R.S. 18:1276.1 is hereby repealed in its entirety.

13 Section 3.(A) The precincts referenced in this Act are those precincts identified as
14 Voting Districts (VTDs) in the 2020 Census Redistricting TIGER/Line Shapefiles for the
15 State of Louisiana as validated through the data verification program of the Louisiana House
16 of Representatives and the Louisiana Senate and available on the legislature's website on the
17 effective date of this Section.

18 (B) When a precinct referenced in this Act has been subdivided by action of the
19 parish governing authority on a nongeographic basis or subdivided by action of the parish
20 governing authority on a geographic basis in accordance with the provisions of R.S.
21 18:532.1, the enumeration in this Act of the general precinct designation shall include all
22 nongeographic and all geographic subdivisions thereof, however such subdivisions may be
23 designated.

24 (C) The territorial limits of the districts as provided in this Act shall continue in
25 effect until changed by law regardless of any subsequent change made to the precincts by
26 the parish governing authority.

27 Section 4. The provisions of this Act shall not reduce the term of office of any
28 person holding any position or office on the effective date of this Section for which the
29 appointment or election is based upon a congressional district as composed pursuant to R.S.

1 18:1276.1. Any position or office that is filled by appointment or election based on a
2 congressional district and that is to be filled after January 3, 2023, shall be appointed or
3 elected based on a district as it is described in Section 1 of this Act.

4 Section 5.(A) Solely for the purposes of qualifying for election and the election of
5 representatives to the United States Congress at the regularly scheduled election for
6 representatives to the congress in 2022, the provisions of Section 1 of this Act shall become
7 effective upon signature of this Act by the governor or, if not signed by the governor, upon
8 expiration of the time for bills to become law without signature by the governor, as provided
9 in Article III, Section 18 of the Constitution of Louisiana. If this Act is vetoed by the
10 governor and subsequently approved by the legislature, the provisions of Section 1 of this
11 Act shall become effective on the day following such approval for the purposes established
12 in this Subsection.

13 (B) For subsequent elections of representatives to the United States Congress and
14 for all other purposes, the provisions of Section 1 of this Act shall become effective at noon
15 on January 3, 2023.

16 (C) The provisions of Section 2 of this Act shall become effective at noon on
17 January 3, 2023.

18 (D) The provisions of this Section and Sections 3 and 4 of this Act shall become
19 effective upon signature of this Act by the governor or, if not signed by the governor, upon
20 expiration of the time for bills to become law without signature by the governor, as provided
21 in Article III, Section 18 of the Constitution of Louisiana. If this Act is vetoed by the
22 governor and subsequently approved by the legislature, the provisions of this Section and
23 Sections 3 and 4 of this Act shall become effective on the day following such approval.

DIGEST

The digest printed below was prepared by House Legislative Services. It constitutes no part of the legislative instrument. The keyword, one-liner, abstract, and digest do not constitute part of the law or proof or indicia of legislative intent. [R.S. 1:13(B) and 24:177(E)]

HB 712 Original

2022 Regular Session

Duplessis

Abstract: Provides for the redistricting of the state's congressional districts and provides for the composition of each of the six congressional districts. Effective for election

purposes only for the regular congressional elections in 2022 and for all other purposes at noon on Jan. 3, 2023.

Statistical summaries of proposed law, including district variances from the ideal population of 776,292 and the range of those variances, as well as maps illustrating proposed district boundaries accompany this digest. (*Attached to the bill version on the internet.*)

Present U.S. Constitution (14th Amendment) provides that representatives in congress shall be apportioned among the several states according to their respective numbers, counting the whole number of persons in each state. The U.S. Supreme Court has held that the population of congressional districts in the same state must be as nearly equal in population as practicable.

Proposed law redraws district boundaries for the six congressional districts, effective upon signature of governor or lapse of time for gubernatorial action for purposes of the 2022 election.

Proposed law retains present districts until noon on Jan. 3, 2023, at which time present law is repealed and proposed districts are effective for all other purposes.

Proposed law specifies that precincts referenced in district descriptions are those precincts identified as Voting Districts (VTDs) in the 2020 Census Redistricting TIGER/Line Shapefiles for the state of La. as validated through the data verification program of the La. legislature. Also specifies that if any such precinct has been subdivided by action of the parish governing authority on a nongeographic basis or subdivided by action of the parish governing authority on a geographic basis in accordance with present law, the enumeration of the general precinct designation shall include all nongeographic and all geographic subdivisions thereof. Further provides that the territorial limits of the districts as enacted shall continue in effect until changed by law regardless of any subsequent change made to the precincts by the parish governing authority.

Proposed law specifies that proposed law does not reduce the term of office of any person holding any position or office on the effective date of proposed law for which the appointment or election is based upon a congressional district as composed pursuant to present law. Specifies that any position or office filled after Jan. 3, 2023, for which the appointment or election is based on a congressional district shall be appointed or elected based on a district as it is described in proposed law.

Population data in the summaries accompanying this digest are derived from 2020 Census Redistricting Data (Public Law 94-171), Summary File for Louisiana. Population data, statistical information, and maps are supplied for purposes of information and analysis and comprise no part of proposed law.

Effective for election purposes only for the regular congressional elections in 2022; effective for all other purposes at noon on Jan. 3, 2023.

(Adds R.S. 18:1276; Repeals R.S. 18:1276.1)

Plan Statistics

Plan: HLS22RS-1038 (Duplessis)

<u>Districts:</u>	<u># of Members</u>	<u>Actual Population</u>	<u>Ideal Population</u>	<u>Absolute Deviation</u>	<u>Relative Deviation</u>
District 1	1	776,288	776,292	-4	-0.001%
District 2	1	776,324	776,292	32	0.004%
District 3	1	776,280	776,292	-12	-0.002%
District 4	1	776,280	776,292	-12	-0.002%
District 5	1	776,292	776,292	0	0.000%
District 6	1	776,293	776,292	1	0.000%
Grand Total:	6	4,657,757	4,657,752		

Ideal Population Per Member: 776292
 Number of Districts for Plan Type: 6
 Range of District Populations: 776,280 to 776,324
 Absolute Mean Deviation: 7
 Absolute Range: -12 to 32
 Absolute Overall Range: 44
 Relative Mean Deviation: 0.00%
 Relative Range: 0.00% to 0.00%
 Relative Overall Range: 0.00%

<i>Ideal - Actual:</i>	-5
<i>Remainder:</i>	5
<i>Unassigned Population:</i>	0

Total Population

Plan: HLS22RS-1038 (Duplessis)

	Total Population	Total White	Total Black	Total Asian	Total American Indian	Total Other	Total Hispanic	VAP Total	VAP White	VAP Black	VAP Asian	VAP American Indian	VAP Other	VAP Hispanic Total
District 1	776,288	499,169	156,420	24,288	23,838	72,573	91,564	603,235	406,023	110,568	18,094	16,721	51,829	64,590
	100.000%	64.302%	20.150%	3.129%	3.071%	9.349%	11.795%	100.000%	67.308%	18.329%	2.999%	2.772%	8.592%	10.707%
District 2	776,324	260,535	423,079	27,469	9,176	56,065	72,176	603,401	219,344	315,387	21,871	7,071	39,728	50,271
	100.000%	33.560%	54.498%	3.538%	1.182%	7.222%	9.297%	100.000%	36.351%	52.268%	3.625%	1.172%	6.584%	8.331%
District 3	776,280	560,368	150,741	17,285	13,850	34,036	41,805	586,948	435,388	105,115	12,444	10,220	23,781	28,649
	100.000%	72.186%	19.418%	2.227%	1.784%	4.385%	5.385%	100.000%	74.178%	17.909%	2.120%	1.741%	4.052%	4.881%
District 4	776,280	455,428	261,926	12,007	18,020	28,899	34,593	596,366	362,936	190,267	8,851	13,735	20,577	23,991
	100.000%	58.668%	33.741%	1.547%	2.321%	3.723%	4.456%	100.000%	60.858%	31.904%	1.484%	2.303%	3.450%	4.023%
District 5	776,292	315,773	419,465	8,946	7,908	24,200	28,638	588,177	255,642	302,438	6,781	5,849	17,467	20,161
	100.000%	40.677%	54.034%	1.152%	1.019%	3.117%	3.689%	100.000%	43.463%	51.420%	1.153%	0.994%	2.970%	3.428%
District 6	776,293	566,379	131,488	17,293	14,268	46,865	53,773	592,421	445,178	91,994	12,375	10,644	32,230	36,000
	100.000%	72.959%	16.938%	2.228%	1.838%	6.037%	6.927%	100.000%	75.146%	15.528%	2.089%	1.797%	5.440%	6.077%
Grand Total	4,657,757	2,657,652	1,543,119	107,288	87,060	262,638	322,549	3,570,548	2,124,511	1,115,769	80,416	64,240	185,612	223,662
	100.000%	57.059%	33.130%	2.303%	1.869%	5.639%	6.925%	100.000%	59.501%	31.249%	2.252%	1.799%	5.198%	6.264%

Voter Registration

Plan: HLS22RS-1038 (Duplessis)

	Reg Total Dec 2021	Reg White Dec 2021	Reg Black Dec 2021	Reg Other Dec 2021	Reg Dem Total Dec 2021	Reg Rep Total Dec 2021	Reg Other Total Dec 2021
District 1	477,499	354,884	80,701	41,914	161,060	175,637	140,802
	79.156%	74.321%	16.901%	8.778%	33.730%	36.783%	29.487%
District 2	486,941	177,799	269,089	40,053	287,764	75,210	123,967
	80.699%	36.513%	55.261%	8.225%	59.096%	15.445%	25.458%
District 3	469,699	371,378	77,580	20,741	146,975	194,860	127,864
	80.024%	79.067%	16.517%	4.416%	31.291%	41.486%	27.223%
District 4	477,681	308,892	149,059	19,730	174,298	184,346	119,037
	80.099%	64.665%	31.205%	4.130%	36.488%	38.592%	24.920%
District 5	492,134	217,238	259,929	14,967	262,603	116,312	113,219
	83.671%	44.142%	52.817%	3.041%	53.360%	23.634%	23.006%
District 6	490,392	397,798	66,390	26,204	128,304	222,415	139,673
	82.778%	81.118%	13.538%	5.343%	26.164%	45.355%	28.482%
Grand Total	2,894,346	1,827,989	902,748	163,609	1,161,004	968,780	764,562

Splits

Plan: HLS22RS-1038 (Duplessis)

	Total Population	Total White	Total Black	Total Asian	Total American Indian	Total Other	VAP Total	VAP White	VAP Black	VAP Asian	VAP American Indian	VAP Other	Reg Total Dec 2021	Reg White Dec 2021	Reg Black Dec 2021	Reg Other Dec 2021
District 1																
*Iberia	57,438	30,708	22,346	1,378	621	2,385	43,334	24,663	15,495	1,025	453	1,698	36,711	22,062	13,245	1,404
*Iberville	5,187	4,047	886	14	75	165	4,242	3,389	639	14	67	133	3,691	3,004	625	62
*Jefferson	237,070	152,179	30,464	11,551	4,272	38,604	189,699	127,396	22,277	8,731	3,223	28,072	144,781	113,529	12,362	18,890
Lafourche	97,557	71,710	15,855	1,025	4,224	4,743	74,619	56,838	11,077	738	2,777	3,189	58,278	48,467	7,164	2,647
*Orleans	75,419	57,649	8,578	2,968	904	5,320	62,878	48,491	7,224	2,323	733	4,107	52,991	42,036	5,323	5,632
Plaquemines	23,515	14,287	5,428	1,317	697	1,786	17,334	10,856	3,857	925	500	1,196	13,908	9,513	3,134	1,261
St. Bernard	43,764	24,497	12,309	1,381	947	4,630	31,775	18,992	7,944	982	688	3,169	25,653	18,233	5,497	1,923
*St. Martin	1,368	1,285	13	7	34	29	1,154	1,091	11	5	30	17	993	979	1	13
St. Mary	49,406	26,949	15,991	835	1,670	3,961	37,521	21,594	11,520	593	1,173	2,641	30,210	18,712	9,891	1,607
*St. Tammany	75,984	45,924	21,403	2,069	1,757	4,831	58,174	37,082	14,728	1,519	1,327	3,518	48,563	32,954	11,893	3,716
Terrebonne	109,580	69,934	23,147	1,743	8,637	6,119	82,505	55,631	15,796	1,239	5,750	4,089	61,720	45,395	11,566	4,759
District 1	776,288	499,169	156,420	24,288	23,838	72,573	603,235	406,023	110,568	18,094	16,721	51,829	477,499	354,884	80,701	41,914
	100.000%	64.302%	20.150%	3.129%	3.071%	9.349%	100.000%	67.308%	18.329%	2.999%	2.772%	8.592%	79.156%	74.321%	16.901%	8.778%
District 2																
*Ascension	31,421	12,385	16,571	392	336	1,737	22,966	9,654	11,663	255	228	1,166	20,186	8,798	10,484	904
Assumption	21,039	13,722	6,220	96	258	743	16,616	11,145	4,707	57	197	510	14,439	9,700	4,510	229
*East Baton Rouge	74,856	30,448	34,091	4,145	778	5,394	61,018	26,761	26,401	3,391	616	3,849	37,991	15,727	19,341	2,923
*Iberville	21,501	9,011	11,167	175	156	992	16,979	7,625	8,250	127	122	855	13,888	5,755	7,806	327
*Jefferson	203,711	68,756	95,753	11,473	3,414	24,315	154,955	56,739	69,898	8,961	2,612	16,745	118,320	46,087	57,214	15,019
*Orleans	308,578	68,813	210,391	9,888	2,762	16,724	243,318	61,761	158,844	8,197	2,215	12,301	203,253	49,950	136,202	17,101
St. Charles	52,549	33,550	13,928	837	925	3,309	39,541	26,154	9,890	529	667	2,301	34,985	24,309	8,797	1,879
St. James	20,192	9,973	9,762	60	82	315	15,505	7,883	7,297	31	64	230	14,966	7,254	7,501	211
St. John the Baptist	42,477	13,877	25,196	403	465	2,536	32,503	11,622	18,437	323	350	1,771	28,913	10,219	17,234	1,460
District 2	776,324	260,535	423,079	27,469	9,176	56,065	603,401	219,344	315,387	21,871	7,071	39,728	486,941	177,799	269,089	40,053
	100.000%	33.560%	54.498%	3.538%	1.182%	7.222%	100.000%	36.351%	52.268%	3.625%	1.172%	6.584%	80.699%	36.513%	55.261%	8.225%
District 3																
Acadia	57,576	44,480	10,864	238	573	1,421	42,943	34,071	7,383	173	400	916	37,678	30,555	6,407	716
Allen	22,750	16,327	4,490	246	947	740	17,510	12,751	3,275	182	646	656	12,201	9,478	2,217	506
Beauregard	36,549	29,529	4,649	402	1,052	917	27,489	22,304	3,495	269	773	648	22,294	18,771	2,369	1,154
Calcasieu	216,785	139,772	59,386	4,702	3,536	9,389	163,166	108,789	41,898	3,359	2,604	6,516	120,511	85,659	29,513	5,339
Cameron	5,617	5,232	125	30	75	155	4,358	4,100	79	23	47	109	4,789	4,610	88	91
*Evangeline	23,988	18,552	3,854	176	242	1,164	18,192	14,131	2,726	132	190	1,013	15,120	12,680	2,170	270
*Iberia	12,491	8,498	2,210	745	173	865	9,457	6,632	1,574	537	128	586	7,815	6,225	1,107	483
Jefferson Davis	32,250	25,066	5,837	183	472	692	24,039	19,121	4,006	111	325	476	20,013	16,350	3,202	461
*Lafayette	172,780	127,426	26,466	5,888	2,593	10,407	132,143	100,507	18,155	4,270	1,973	7,238	110,118	90,904	12,679	6,535

Splits

Plan: HLS22RS-1038 (Duplessis)

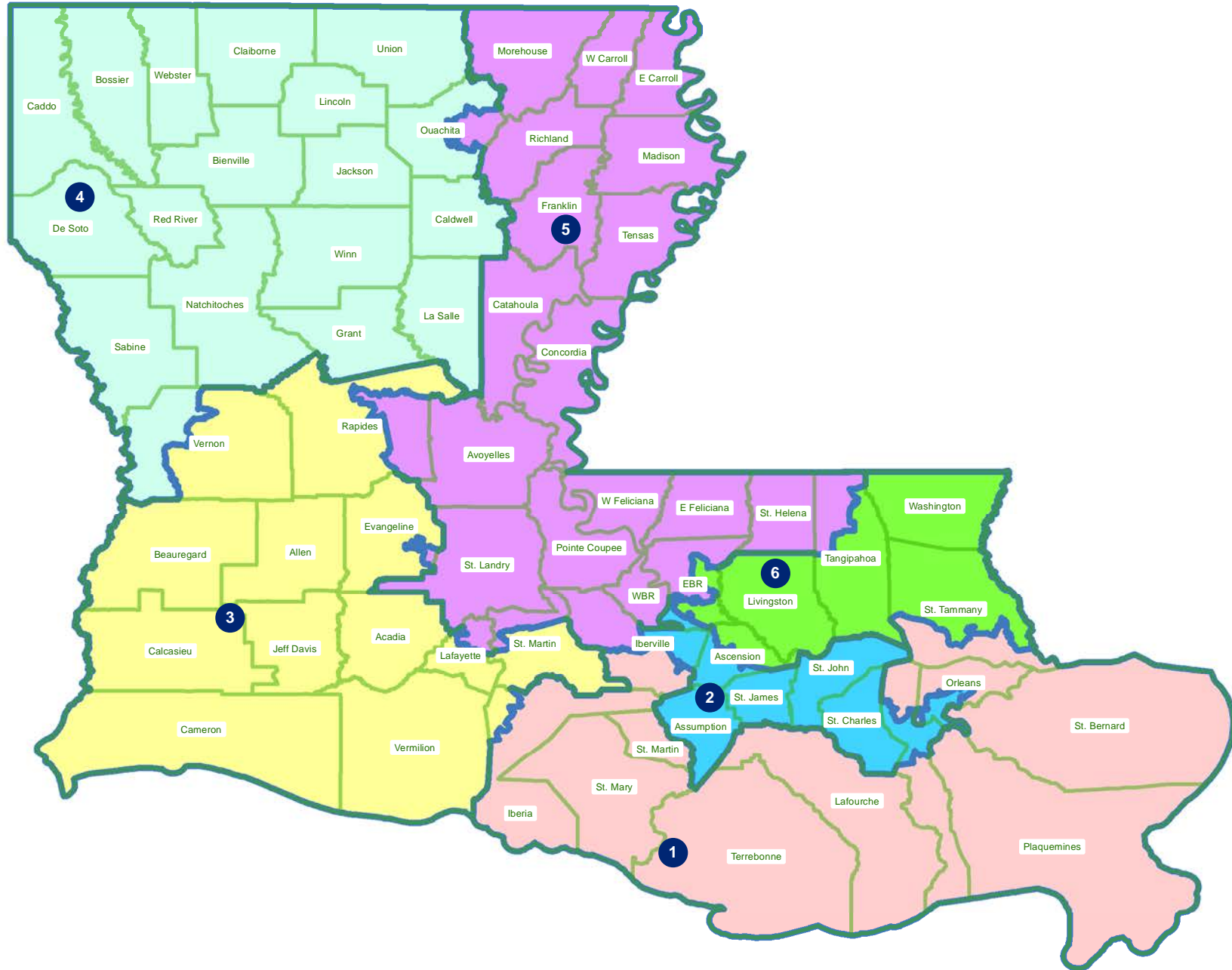
	Total Population	Total White	Total Black	Total Asian	Total American Indian	Total Other	VAP Total	VAP White	VAP Black	VAP Asian	VAP American Indian	VAP Other	Reg Total Dec 2021	Reg White Dec 2021	Reg Black Dec 2021	Reg Other Dec 2021
District 3																
*Rapides	69,584	54,292	8,596	1,655	2,166	2,875	53,146	42,439	5,966	1,201	1,634	1,906	44,131	37,503	4,522	2,106
*St. Martin	35,420	23,009	10,468	511	346	1,086	27,027	18,195	7,452	361	273	746	24,054	16,620	6,831	603
Vermilion	57,359	44,477	8,810	1,447	623	2,002	43,012	34,363	5,787	1,037	488	1,337	36,769	30,505	4,994	1,270
*Vernon	33,131	23,708	4,986	1,062	1,052	2,323	24,466	17,985	3,319	789	739	1,634	14,206	11,518	1,481	1,207
District 3	776,280	560,368	150,741	17,285	13,850	34,036	586,948	435,388	105,115	12,444	10,220	23,781	469,699	371,378	77,580	20,741
	100.000%	72.186%	19.418%	2.227%	1.784%	4.385%	100.000%	74.178%	17.909%	2.120%	1.741%	4.052%	80.024%	79.067%	16.517%	4.416%
District 4																
Bienville	12,981	6,950	5,600	57	207	167	10,073	5,486	4,284	30	162	111	8,847	4,843	3,917	87
Bossier	128,746	81,052	32,551	3,492	3,273	8,378	95,876	62,931	22,440	2,448	2,477	5,580	69,743	50,861	14,838	4,044
Caddo	237,848	103,457	119,304	4,034	3,840	7,213	182,407	85,059	86,359	3,008	2,958	5,023	151,296	73,113	71,249	6,934
Caldwell	9,645	7,646	1,632	51	150	166	7,478	5,969	1,224	46	116	123	6,031	5,124	818	89
Claiborne	14,170	7,263	6,360	88	185	274	11,507	6,258	4,824	55	140	230	8,598	4,632	3,820	146
De Soto	26,812	15,284	9,973	117	740	698	20,440	11,909	7,425	86	557	463	18,713	11,330	6,810	573
Grant	22,169	17,709	3,335	133	644	348	17,527	13,964	2,717	97	507	242	12,688	11,174	1,176	338
Jackson	15,031	9,967	4,166	175	255	468	11,783	7,967	3,125	140	174	377	9,449	6,647	2,610	192
La Salle	14,791	11,348	1,422	283	372	1,366	11,563	8,636	1,065	264	271	1,327	8,792	7,978	637	177
Lincoln	48,396	26,034	19,364	892	662	1,444	38,655	21,306	15,119	744	526	960	25,649	15,672	9,016	961
Natchitoches	37,515	19,361	15,725	255	861	1,313	29,349	16,010	11,415	198	683	1,043	23,107	12,850	9,224	1,033
*Ouachita	90,953	72,958	11,272	1,451	2,101	3,171	68,844	56,386	7,617	1,018	1,638	2,185	58,372	50,859	5,489	2,024
Red River	7,620	4,195	3,106	25	171	123	5,714	3,338	2,164	3	116	93	5,631	3,130	2,418	83
Sabine	22,155	15,036	3,861	94	2,723	441	17,064	12,054	2,655	66	1,970	319	14,547	11,023	2,184	1,340
Union	21,107	14,460	5,224	62	338	1,023	16,632	11,807	3,861	39	254	671	15,221	11,066	3,692	463
*Vernon	15,619	11,379	2,625	380	548	687	11,795	8,780	1,814	285	421	495	9,854	7,664	1,530	660
Webster	36,967	22,735	12,679	208	687	658	28,753	18,144	9,464	154	558	433	22,737	14,938	7,339	460
Winn	13,755	8,594	3,727	210	263	961	10,906	6,932	2,695	170	207	902	8,406	5,988	2,292	126
District 4	776,280	455,428	261,926	12,007	18,020	28,899	596,366	362,936	190,267	8,851	13,735	20,577	477,681	308,892	149,059	19,730
	100.000%	58.668%	33.741%	1.547%	2.321%	3.723%	100.000%	60.858%	31.904%	1.484%	2.303%	3.450%	80.099%	64.665%	31.205%	4.130%
District 5																
Avoyelles	39,693	25,625	11,678	434	767	1,189	30,578	20,269	8,311	379	570	1,049	23,426	16,534	6,294	598
Catahoula	8,906	5,776	2,395	46	119	570	6,951	4,557	1,736	33	87	538	6,467	4,639	1,770	58
Concordia	18,687	10,275	7,725	122	233	332	14,217	8,108	5,613	100	167	229	11,964	7,222	4,540	202
*East Baton Rouge	189,802	38,147	137,810	3,876	1,361	8,608	141,430	31,332	100,209	2,908	1,057	5,924	116,660	27,414	84,165	5,081
East Carroll	7,459	2,054	5,272	29	43	61	5,901	1,773	4,043	19	27	39	4,709	1,306	3,359	44
East Feliciana	19,539	11,516	7,341	91	262	329	16,183	9,740	5,918	61	198	266	13,600	7,959	5,186	455
*Evangeline	8,362	2,802	5,381	65	38	76	6,216	2,329	3,757	55	27	48	5,433	1,886	3,473	74

Splits

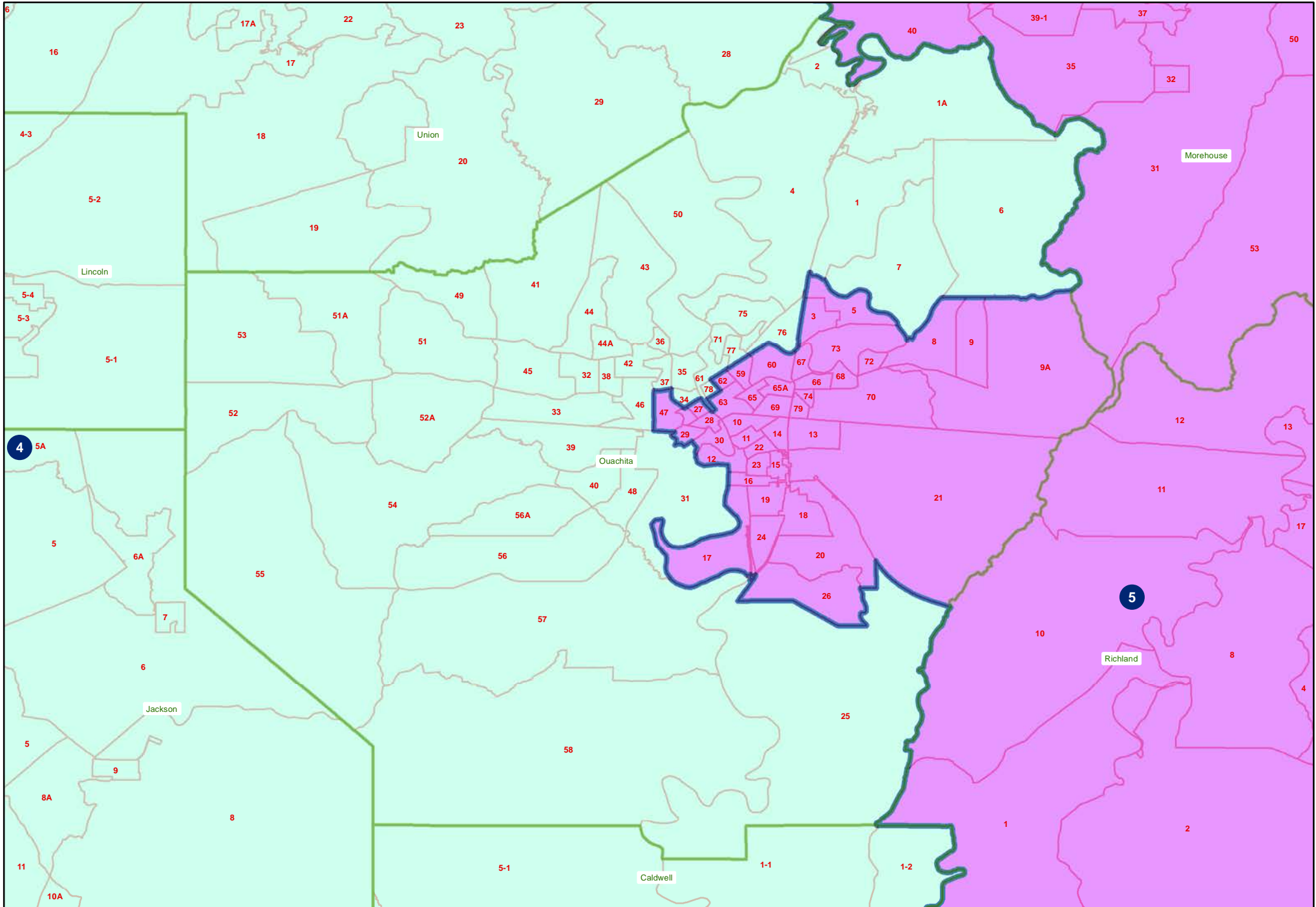
Plan: HLS22RS-1038 (Duplessis)

	Total Population	Total White	Total Black	Total Asian	Total American Indian	Total Other	VAP Total	VAP White	VAP Black	VAP Asian	VAP American Indian	VAP Other	Reg Total Dec 2021	Reg White Dec 2021	Reg Black Dec 2021	Reg Other Dec 2021
District 5																
Franklin	19,774	12,492	6,802	70	205	205	15,028	9,901	4,779	44	153	151	13,159	9,015	4,034	110
*Iberville	3,553	1,775	1,677	13	43	45	2,865	1,448	1,343	8	32	34	2,883	1,373	1,466	44
*Lafayette	68,973	25,937	38,670	566	617	3,183	51,732	21,101	27,762	394	414	2,061	43,375	17,741	23,802	1,832
Madison	10,017	3,475	6,363	20	59	100	7,435	2,906	4,391	9	48	81	7,278	2,494	4,674	110
Morehouse	25,629	12,281	12,484	160	370	334	20,062	10,095	9,300	117	279	271	16,922	8,505	8,131	286
*Ouachita	69,415	15,587	49,945	1,337	560	1,986	51,356	13,588	34,673	1,100	421	1,574	41,380	9,656	30,169	1,555
Pointe Coupee	20,758	12,395	7,504	107	159	593	16,250	10,108	5,502	91	119	430	14,675	9,320	5,121	234
*Rapides	60,439	23,218	33,996	773	936	1,516	45,646	18,934	24,239	585	700	1,188	36,045	15,329	19,253	1,463
Richland	20,043	11,785	7,603	83	258	314	15,383	9,338	5,546	66	203	230	13,662	8,470	4,961	231
St. Helena	10,920	4,527	6,031	39	134	189	8,463	3,805	4,371	28	109	150	8,321	3,628	4,565	128
St. Landry	82,540	43,611	35,836	499	636	1,958	61,811	34,209	25,497	353	451	1,301	54,482	30,093	23,005	1,384
*St. Martin	14,979	8,965	5,440	79	159	336	11,223	6,992	3,830	41	110	250	10,073	6,335	3,549	189
*Tangipahoa	20,397	8,702	10,865	111	192	527	15,371	7,011	7,780	93	125	362	12,579	5,874	6,410	295
Tensas	4,147	1,744	2,312	23	26	42	3,235	1,446	1,728	12	23	26	3,455	1,503	1,917	35
West Baton Rouge	27,199	14,307	11,170	287	326	1,109	20,526	11,146	8,149	209	219	803	17,141	9,937	6,865	339
West Carroll	9,751	7,894	1,425	27	180	225	7,532	6,223	1,010	20	136	143	7,038	5,913	1,040	85
West Feliciana	15,310	10,883	3,740	89	225	373	12,783	9,283	2,951	56	174	319	7,407	5,092	2,180	135
District 5	776,292	315,773	419,465	8,946	7,908	24,200	588,177	255,642	302,438	6,781	5,849	17,467	492,134	217,238	259,929	14,967
	100.000%	40.677%	54.034%	1.152%	1.019%	3.117%	100.000%	43.463%	51.420%	1.153%	0.994%	2.970%	83.671%	44.142%	52.817%	3.041%
District 6																
*Ascension	95,079	68,756	15,645	1,908	1,668	7,102	68,991	51,482	10,476	1,259	1,162	4,612	59,731	48,002	8,330	3,399
*East Baton Rouge	192,123	127,474	41,497	8,404	2,588	12,160	153,164	105,788	30,180	6,300	2,074	8,822	124,613	95,091	21,169	8,353
Livingston	142,282	116,855	12,658	1,697	3,111	7,961	105,141	88,432	8,136	1,099	2,311	5,163	84,568	76,062	5,425	3,081
*St. Tammany	188,586	150,717	17,240	3,705	3,903	13,021	144,054	117,539	12,033	2,556	2,834	9,092	130,216	112,770	9,249	8,197
*Tangipahoa	112,760	72,634	31,014	1,363	2,262	5,487	86,120	58,194	21,437	1,007	1,702	3,780	63,677	47,038	14,115	2,524
Washington	45,463	29,943	13,434	216	736	1,134	34,951	23,743	9,732	154	561	761	27,587	18,835	8,102	650
District 6	776,293	566,379	131,488	17,293	14,268	46,865	592,421	445,178	91,994	12,375	10,644	32,230	490,392	397,798	66,390	26,204
	100.000%	72.959%	16.938%	2.228%	1.838%	6.037%	100.000%	75.146%	15.528%	2.089%	1.797%	5.440%	82.778%	81.118%	13.538%	5.343%

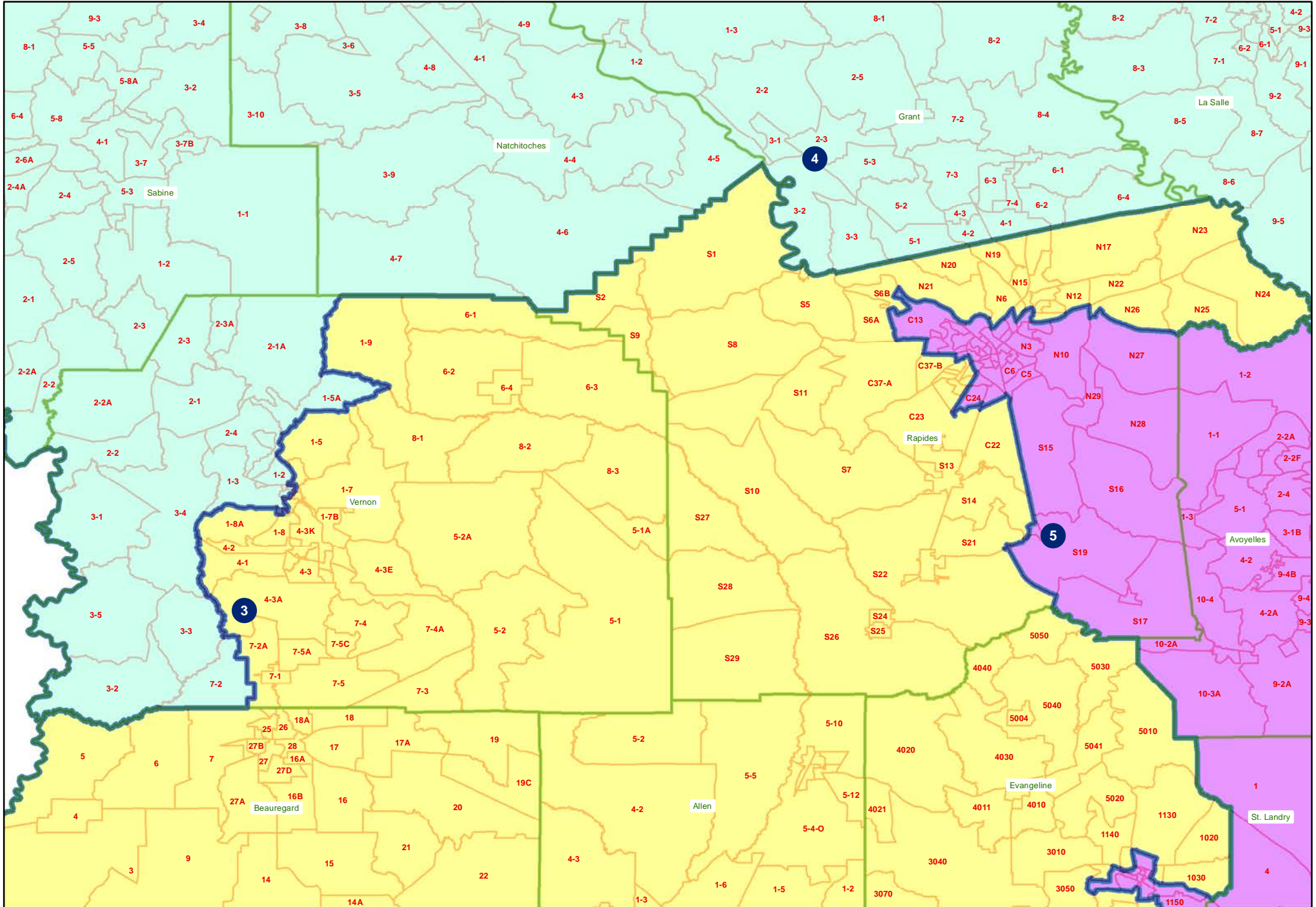
HLS22RS-1038 (Duplessis)
Statewide



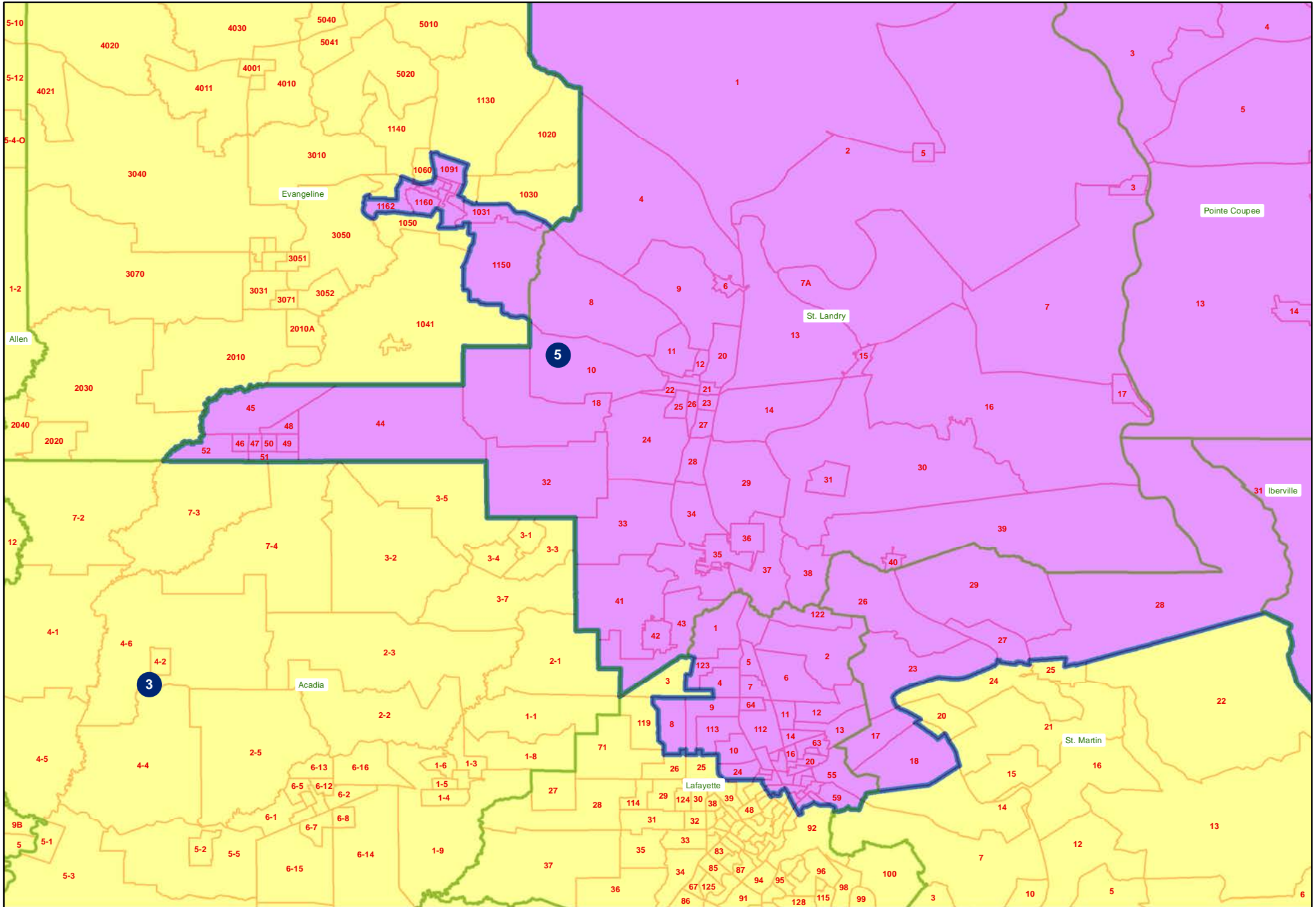
HLS22RS-1038 (Duplessis) Ouachita



HLS22RS-1038 (Duplessis) Rapides and Vernon

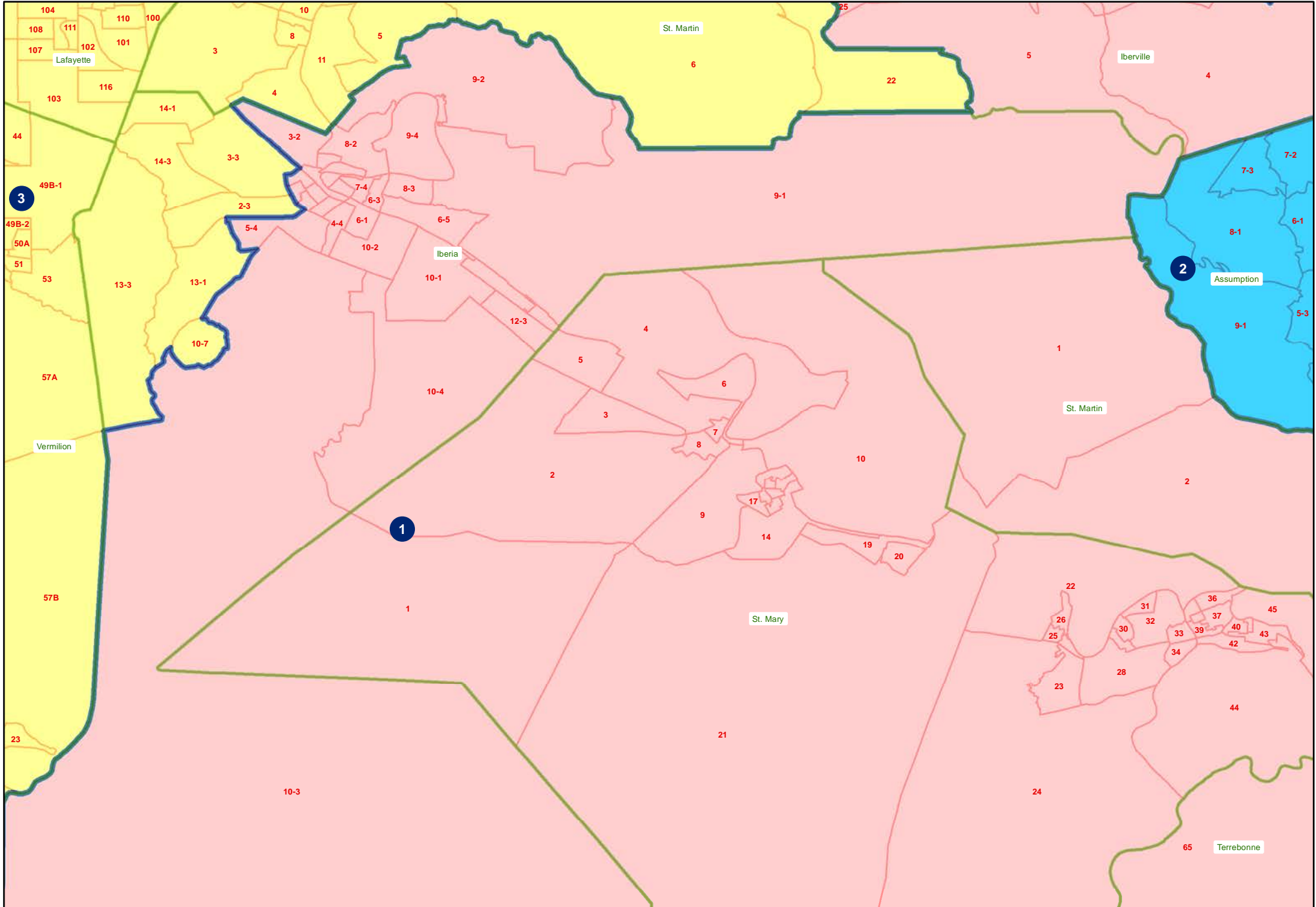


HLS22RS-1038 (Duplessis)
Evangeline, Lafayette, and St. Martin



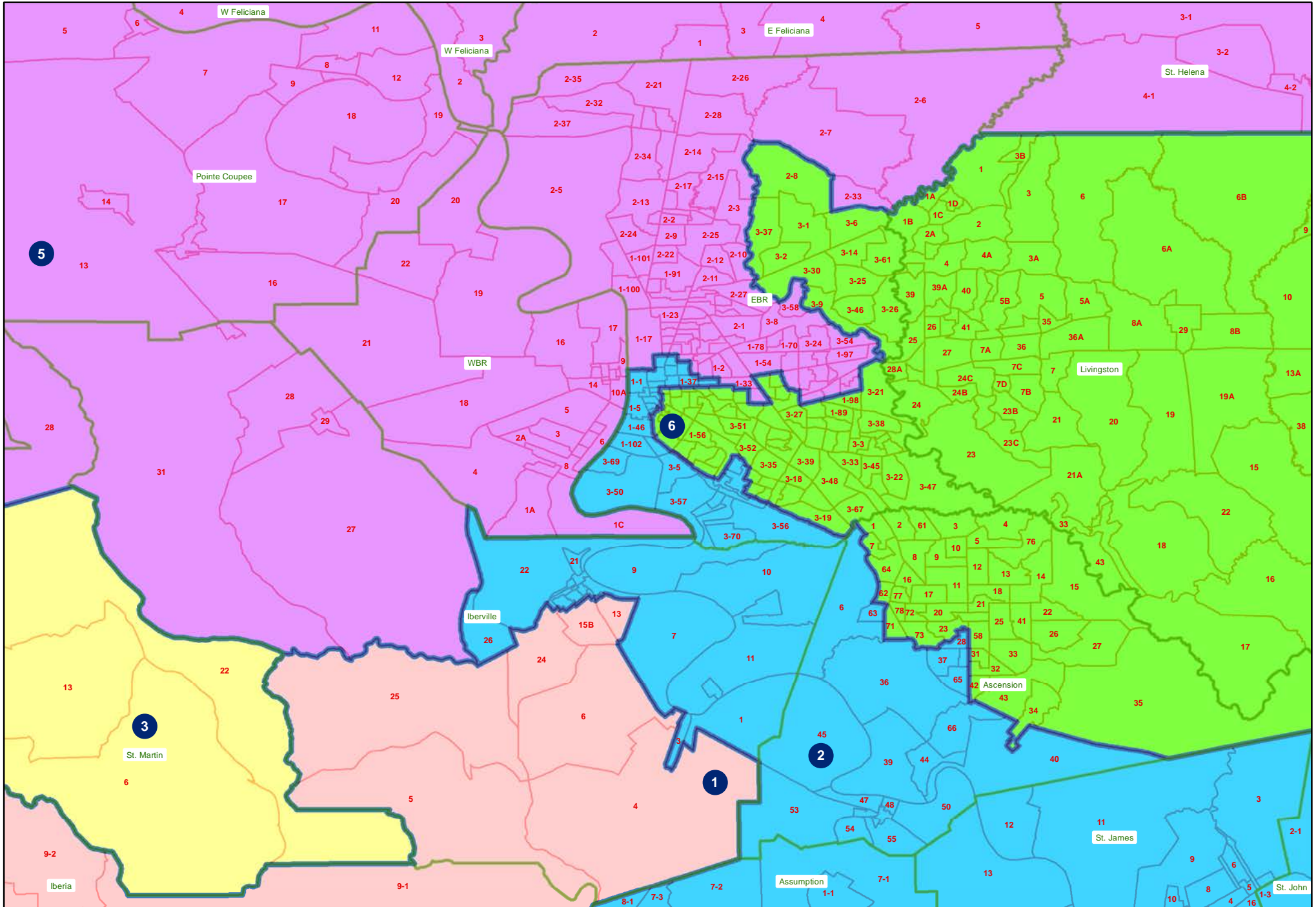
HLS22RS-1038 (Duplessis)

Iberia and lower St. Martin

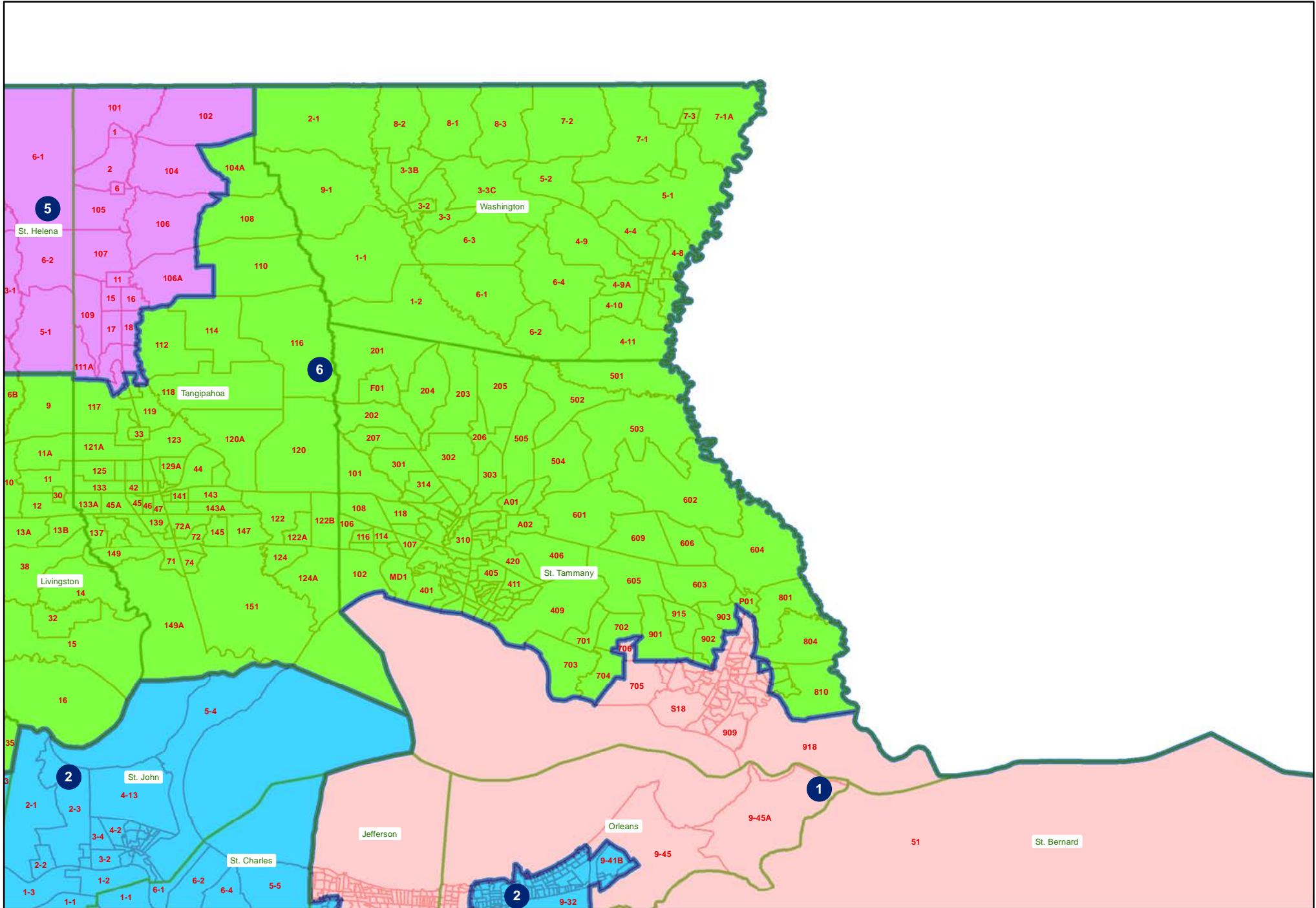


HLS22RS-1038 (Duplessis)

Ascension, East Baton Rouge, and Iberville



HLS22RS-1038 (Duplessis) St. Tammany and Tangipahoa



HLS22RS-1038 (Duplessis)

Jefferson and Orleans

