

First Extraordinary Session, 2011

ACT No. 23

HOUSE BILL NO. 38

BY REPRESENTATIVE GALLOT

1 AN ACT

2 To enact R.S. 45:1161.5 and to repeal R.S. 45:1161.4, relative to redistricting; to provide for
3 election districts for the Public Service Commission; to provide for election of
4 commissioners; to provide for effectiveness; and to provide for related matters.

5 Be it enacted by the Legislature of Louisiana:

6 Section 1. R.S. 45:1161.5 is hereby enacted to read as follows:

7 §1161.5. Public Service Commission districts

8 A. The state shall be divided into the following five Public Service
9 Commission districts, and one commissioner shall be elected from each district:

10 (1) District 1 is composed of Precincts 2, 3, 4, 5, 10, 12, 13, 14, 15, 18, 21,
11 22, 25, 26, 27, 33, 34, 35, 41 and 43 of Ascension Parish; Precincts 1, 2, 3, 4, 5, 7,
12 8, 9, 10, 11, 12, 13, 14, 15, 16, 17, 18, 19, 20, 21, 22, 23, 24, 25, 26, 27, 28, 29, 30,
13 31, 32, 33, 34, 35, 36, 37, 38, 39, 40, 41, 42, 43, 44, 45, 46, 51, 52, 53, 54, 55, 56, 58,
14 59, 60, 61, 62, 63, 64, 65, 66, 67, 68, 69, 70, 71, 72, 73, 74, 75, 76, 77, 78, 79, 80, 81,
15 82, 83, 84, 85, 86, 87, 88, 89, 90, 91, 92, 93, 94, 95, 96, 97, 98, 99, 100, 101, 102,
16 103, 105, 106, 116, 117, 118, 119, 120, 121, 122, 123, 124, 125, 126, 127, 128, 129,
17 130, 132, 134, 136, 170, 172, 175, 176, 177, 178, 179A, 182, 183, 184, 185A, 185B,
18 189, 190, 192, 193, 194A, 194B, 198, 199, 202, 203, 204, 215, 216B, 217, 226, 227,
19 228, 229, 230, 231, 234, 235, 236, 237, 238, 246, 247, 248, 3-G, 5-G, 9-G, 10-G,
20 12-G, 13-G, 1-GI, 1-H, 2-H, 3-H, 4-H, 5-H, 6-H, 7-H, 8-H, 9-H, 1-K, 2-K, 3-K, 4-K,
21 5-K, 6-K, 7-K, 8-K, 9-K, 10-K, 11-K, 12-K, 13-KA, 14-K, 15-K, 16-K, 17-K, 18-K,
22 19-K, 20-K, 25-K, 27-K, 28-K, 29-K, 34-K, 35-K, 1-L, 1-W, 3-W, 4-W, 5-W, 6-W
23 and 7-W of Jefferson Parish; Precincts 9, 10, 11, 11A, 12, 13A, 13B, 14, 15, 16, 17,
24 18, 19, 20, 21, 22, 30, 31, 32, 33, 34, 38 and 43 of Livingston Parish; Precincts 3-20,

1 4-6, 4-7, 4-8, 4-9, 4-11, 4-14, 4-15, 4-17, 4-17A, 4-18, 4-20, 4-21, 4-22, 4-23, 5-17,
 2 5-18, 7-41, 7-42, 9-45A, 14-1, 14-2, 14-3, 14-4, 14-5, 14-6, 14-7, 14-8, 14-9, 14-10,
 3 14-11, 14-12, 14-13A, 14-14, 14-15, 14-16, 14-17, 14-18A, 14-19, 14-20, 14-21,
 4 15-19A, 16-1, 16-1A, 17-1, 17-17, 17-18, 17-18A, 17-19 and 17-20 of Orleans
 5 Parish; Plaquemines Parish; St. Bernard Parish; Precincts 2-5, 4-1, 4-2, 4-3, 7-2 and
 6 7-3 of St. Charles Parish; St. Helena Parish; St. Tammany Parish; Tangipahoa Parish;
 7 and Washington Parish.

8 (2) District 2 is composed of Precincts 1-7, 1-8, 1-9, 1-12, 1-33, 1-34, 1-35,
 9 1-39, 1-40, 1-41, 1-42, 1-43, 1-44, 1-47, 1-48, 1-49, 1-52, 1-53, 1-55, 1-56, 1-57,
 10 1-60, 1-64, 1-65, 1-69, 1-72, 1-74, 1-75, 1-80, 1-89, 1-90, 1-98, 1-99, 1-103, 1-105,
 11 2-6, 2-7, 2-8, 2-18, 2-21, 2-26, 2-28, 2-29, 3-1, 3-2, 3-3, 3-4, 3-6, 3-7, 3-9, 3-10,
 12 3-11, 3-12, 3-13, 3-14, 3-15, 3-16, 3-17, 3-18, 3-19, 3-21, 3-22, 3-25, 3-26, 3-27,
 13 3-28, 3-29, 3-30, 3-31, 3-32, 3-33, 3-34, 3-35, 3-36, 3-37, 3-38, 3-39, 3-40, 3-41,
 14 3-43, 3-45, 3-46, 3-47, 3-48, 3-49, 3-51, 3-52 and 3-53 of East Baton Rouge Parish;
 15 East Feliciana Parish; Precinct 11-3 of Iberia Parish; Precincts 4, 5, 25, 25A, 25B,
 16 26, 26A, 27, 28, 29, 30, 31 and 32 of Iberville Parish; Lafayette Parish; Lafourche
 17 Parish; Precincts 1, 1A, 1B, 1C, 1D, 2, 2A, 3, 3A, 4, 4A, 5, 5A, 5B, 6, 6A, 6B, 7, 7A,
 18 7B, 8A, 8B, 23, 23A, 23B, 24, 24A, 24B, 24C, 24D, 25, 26, 26A, 26B, 26C, 27, 28A,
 19 28B, 29, 35, 35A, 36, 36A, 39, 39A, 40, 40A and 41 of Livingston Parish; Pointe
 20 Coupee Parish; St. Martin Parish; St. Mary Parish; Terrebonne Parish; Precincts 1-1,
 21 2-1A, 2-1B, 2-2, 2-3, 3-1B, 7-1, 7-2, 7-3 and 7-4 of West Baton Rouge Parish; and
 22 West Feliciana Parish.

23 (3) District 3 is composed of Precincts 1, 6, 7, 8, 9, 11, 16, 17, 19, 20, 23, 24,
 24 28, 30, 31, 32, 36, 37, 39, 40, 42, 44, 45, 47, 48, 49, 50, 51, 52, 53, 54, 55, 56, 57, 58,
 25 60 and 61 of Ascension Parish; Assumption Parish; Precincts 1-1, 1-2, 1-3, 1-4, 1-5,
 26 1-6, 1-10, 1-13, 1-14, 1-15, 1-16, 1-17, 1-18, 1-19, 1-21, 1-22, 1-23, 1-24, 1-25, 1-26,
 27 1-27, 1-28, 1-29, 1-30, 1-31, 1-32, 1-36, 1-37, 1-38, 1-45, 1-46, 1-50, 1-51, 1-54,
 28 1-58, 1-59, 1-61, 1-62, 1-63, 1-66, 1-67, 1-68, 1-70, 1-71, 1-73, 1-77, 1-78, 1-81,
 29 1-82, 1-83, 1-84, 1-85, 1-86, 1-87, 1-88, 1-91, 1-92, 1-93, 1-94, 1-95, 1-97, 1-100,
 30 1-101, 1-102, 1-104, 1-107, 2-1, 2-2, 2-3, 2-4, 2-5, 2-9, 2-10, 2-11, 2-12, 2-13, 2-14,

CODING: Words in ~~struck through~~ type are deletions from existing law; words underscored are additions.

1 2-15, 2-16, 2-17, 2-19, 2-20, 2-22, 2-23, 2-24, 2-25, 2-27, 2-30, 2-31, 2-32, 3-5, 3-8,
 2 3-20, 3-23, 3-24, 3-42, 3-44, 3-50, 3-54 and 3-55 of East Baton Rouge Parish;
 3 Precincts 1, 2, 3, 6, 6A, 7, 8, 10, 11, 12, 13, 13A, 13B, 13C, 14, 14A, 14B, 15, 15A,
 4 15B, 16, 17, 17A, 18, 19, 19A, 20, 21, 22, 23 and 24 of Iberville Parish; Precincts 57,
 5 104, 107, 108, 115, 131, 133, 138, 150, 151, 152, 153, 154, 155, 156, 157A, 157B,
 6 171, 173, 174, 179B, 180, 181, 187, 188, 191, 195, 196, 197A, 197B, 197C, 200,
 7 201, 205, 210, 211, 212A, 212B, 213A, 213B, 213C, 214A, 214B, 216A, 225, 232A,
 8 232B, 1-G, 2-G, 4-G, 6-G, 7-G, 8-G, 11-G, 13-KB, 21-K, 22-K, 23-K, 24-K, 26-K,
 9 30-K, 31-K, 33-K and 2-W of Jefferson Parish; Precincts 1-1, 1-2, 1-5, 1-6, 2-1, 2-2,
 10 2-3, 2-4, 2-6, 2-6A, 2-7, 3-1, 3-3, 3-5, 3-8, 3-9, 3-12, 3-14, 3-15, 3-18, 3-19, 4-2, 4-3,
 11 4-4, 4-5, 5-1, 5-2, 5-3, 5-4, 5-5, 5-7, 5-8, 5-9, 5-10, 5-11, 5-12, 5-13, 5-15, 5-16, 6-1,
 12 6-2, 6-4, 6-6, 6-7, 6-8, 6-9, 7-1, 7-2, 7-4, 7-5, 7-6, 7-7, 7-8, 7-9A, 7-10, 7-11, 7-12,
 13 7-13, 7-14, 7-15, 7-16, 7-17, 7-18, 7-19, 7-20, 7-21, 7-23, 7-24, 7-25, 7-25A, 7-26,
 14 7-27, 7-27B, 7-28, 7-28A, 7-29, 7-30, 7-32, 7-33, 7-34, 7-35, 7-37, 7-37A, 7-40, 8-1,
 15 8-2, 8-4, 8-6, 8-7, 8-8, 8-9, 8-12, 8-13, 8-14, 8-15, 8-19, 8-20, 8-21, 8-22, 8-23, 8-24,
 16 8-25, 8-26, 8-27, 8-28, 8-30, 9-1, 9-3, 9-3A, 9-4, 9-5, 9-5A, 9-6B, 9-6C, 9-6D, 9-6E,
 17 9-6F, 9-7, 9-8, 9-8A, 9-9, 9-10, 9-11, 9-12, 9-13, 9-14, 9-15, 9-16, 9-17, 9-19, 9-21,
 18 9-23, 9-25, 9-26, 9-28, 9-28C, 9-28E, 9-29, 9-30, 9-30A, 9-31, 9-31A, 9-31B, 9-31D,
 19 9-32, 9-33, 9-34A, 9-35, 9-35A, 9-36, 9-36B, 9-37, 9-38, 9-38A, 9-39, 9-39B, 9-40,
 20 9-40A, 9-40C, 9-41, 9-41A, 9-41B, 9-41C, 9-41D, 9-42, 9-42C, 9-43A, 9-43B,
 21 9-43C, 9-43E, 9-43F, 9-43G, 9-43H, 9-43I, 9-43J, 9-43K, 9-43L, 9-43M, 9-43N,
 22 9-44, 9-44A, 9-44B, 9-44D, 9-44E, 9-44F, 9-44G, 9-44I, 9-44J, 9-44L, 9-44M,
 23 9-44N, 9-44O, 9-44P, 9-44Q, 9-45, 10-3, 10-6, 10-7, 10-8, 10-9, 10-11, 10-12,
 24 10-13, 10-14, 11-2, 11-3, 11-4, 11-5, 11-8, 11-9, 11-10, 11-11, 11-12, 11-13, 11-14,
 25 11-17, 12-1, 12-2, 12-3, 12-4, 12-5, 12-6, 12-7, 12-8, 12-9, 12-10, 12-11, 12-12,
 26 12-13, 12-14, 12-16, 12-17, 12-19, 13-1, 13-2, 13-3, 13-4, 13-5, 13-6, 13-7, 13-8,
 27 13-9, 13-10, 13-11, 13-12, 13-13, 13-14, 13-15, 13-16, 14-23, 14-24A, 14-25, 14-26,
 28 15-1, 15-2, 15-3, 15-5, 15-6, 15-8, 15-9, 15-10, 15-11, 15-12, 15-12A, 15-13,
 29 15-13A, 15-13B, 15-14, 15-14A, 15-14B, 15-14C, 15-14D, 15-14E, 15-14F, 15-14G,
 30 15-15, 15-15A, 15-15B, 15-16, 15-17, 15-17A, 15-17B, 15-18, 15-18A, 15-18B,

1 15-18C, 15-18D, 15-18E, 15-18F, 15-19, 15-19B, 15-19C, 16-2, 16-3, 16-4, 16-5,
 2 16-6, 16-7, 16-8, 16-9, 17-2, 17-3, 17-4, 17-5, 17-6, 17-7, 17-8, 17-9, 17-10, 17-11,
 3 17-12, 17-13, 17-13A, 17-14, 17-15 and 17-16 of Orleans Parish; Precincts 1-1, 1-2,
 4 1-3, 1-5, 1-6, 2-1, 2-2, 2-3, 2-4, 3-1, 3-2, 3-3, 3-4, 3-5, 3-6, 4-4, 5-1, 5-2, 5-3, 5-4,
 5 5-5, 6-1, 6-2, 6-3, 6-4, 6-5, 6-6, 6-7, 6-8, 7-1 and 7-4 of St. Charles Parish; St. James
 6 Parish; St. John the Baptist Parish; and Precincts 3-1A, 3-2, 4-1, 4-2, 4-3A, 4-3B,
 7 4-4, 4-5, 5-1, 6-1 and 6-2 of West Baton Rouge Parish.

8 (4) District 4 is composed of Acadia Parish; Allen Parish; Avoyelles Parish;
 9 Beauregard Parish; Calcasieu Parish; Cameron Parish; Precincts 1-4, 3-2, 4-4, 5-1,
 10 5-2, 6-1, 6-2, 6-3, 6-5, 7-1, 7-3, 7-5, 8-1, 8-2, 9-1, 9-2, 9-3 and 9-4 of Catahoula
 11 Parish; Evangeline Parish; Grant Parish; Precincts 1-1, 1-2, 1-3, 2-1, 2-2, 2-3, 3-1,
 12 3-2, 3-3, 3-4, 4-1, 4-2, 4-3, 4-4, 5-1, 5-2, 5-3, 5-4, 5-5, 6-1, 6-2, 6-3, 6-4, 7-1, 7-2,
 13 7-3, 7-4, 7-5, 8-1, 8-2, 8-4, 8-5, 9-1, 9-2, 9-3, 9-4, 9-5, 10-2, 10-3, 10-4, 10-5, 10-6,
 14 10-7, 11-1, 11-2, 11-4, 11-5, 12-1, 12-2, 12-3, 12-4, 13-1, 13-2, 13-3, 13-4, 14-1,
 15 14-3 and 14-4 of Iberia Parish; Jefferson Davis Parish; La Salle Parish; Rapides
 16 Parish; Precincts 1-1, 1-2, 1-3, 2-1, 2-2, 2-2A, 2-3, 2-4, 2-4A, 2-5, 2-6, 2-6A, 3-2,
 17 3-4, 3-6, 3-6A, 3-7, 4-1, 5-3, 5-5, 5-8, 5-8A, 6-2, 6-2A, 6-3 and 6-4 of Sabine Parish;
 18 St. Landry Parish; Vermilion Parish; and Vernon Parish.

19 (5) District 5 is composed of Bienville Parish; Bossier Parish; Caddo Parish;
 20 Caldwell Parish; Precincts 1-1, 1-2, 1-3, 2-1, 2-2, 2-5, 3-1, 3-3, 3-4, 4-1 and 4-2 of
 21 Catahoula Parish; Claiborne Parish; Concordia Parish; De Soto Parish; East Carroll
 22 Parish; Franklin Parish; Jackson Parish; Lincoln Parish; Madison Parish; Morehouse
 23 Parish; Natchitoches Parish; Ouachita Parish; Red River Parish; Richland Parish;
 24 Precincts 6-4A, 6-4B, 7-1, 7-2, 7-3, 7-4, 7-5, 8-1, 8-2, 9-1, 9-2 and 9-3 of Sabine
 25 Parish; Tensas Parish; Union Parish; Webster Parish; West Carroll Parish; and Winn
 26 Parish.

27 B. Each commissioner in office on the effective date of this Section shall be
 28 the commissioner for the district having the same designation as the district from
 29 which the commissioner was elected and shall complete the term for which he was
 30 elected.

CODING: Words in ~~struck through~~ type are deletions from existing law; words underscored are additions.

1 Section 2.(A) The precincts referenced in this Act are those precincts identified as
2 Voting Districts (VTDs) in the 2010 Census Redistricting TIGER/Line Shapefiles for the
3 State of Louisiana.

4 (B) When a precinct referenced in this Act has been subdivided by action of the
5 parish governing authority on a nongeographic basis or subdivided by action of the parish
6 governing authority on a geographic basis in accordance with the provisions of R.S.
7 18:532.1, the enumeration in this Act of the general precinct designation shall include all
8 nongeographic and all geographic subdivisions thereof however such subdivisions may be
9 designated. The territorial limits of the districts as provided in this Act shall continue in
10 effect without change regardless of any changes made to the precincts by the parish
11 governing authority.

12 Section 3. The provisions of this Act shall not reduce the term of office of any
13 commissioner of the Public Service Commission holding office on the effective date of this
14 Section.

15 Section 4. Any election after the effective date of this Section to fill a vacancy in the
16 office of a commissioner of the Public Service Commission for the remainder of the term
17 shall be conducted in the district where the vacancy has occurred as such district is
18 designated and composed as provided in Section 1 of this Act.

19 Section 5. R.S. 45:1161.4 is hereby repealed in its entirety.

20 Section 6.(A) The provisions of this Section and of Sections 1 and 2 of this Act shall
21 become effective solely for the purposes of the election of a member of the Public Service
22 Commission from District 2 at the next regularly scheduled election for such office in 2012,
23 commencing on the date and at the time that the qualifying period opens for such office. For
24 subsequent elections of members of the Public Service Commission and for all other
25 purposes, the provisions of this Section and Sections 1 and 2 of this Act shall become
26 effective on January 1, 2013.

1 (B) The provisions of Sections 3 through 5 of this Act shall become effective on
2 January 1, 2013.

SPEAKER OF THE HOUSE OF REPRESENTATIVES

PRESIDENT OF THE SENATE

GOVERNOR OF THE STATE OF LOUISIANA

APPROVED: _____

Plan Statistics

<u>Districts:</u>	<u># of Members</u>	<u>Actual Population</u>	<u>Ideal Population</u>	<u>Absolute Deviation</u>	<u>Relative Deviation</u>
District 1	1	930,075	906,674	23,401	2.581%
District 2	1	927,139	906,674	20,465	2.257%
District 3	1	864,269	906,674	-42,405	-4.677%
District 4	1	888,023	906,674	-18,651	-2.057%
District 5	1	923,866	906,674	17,192	1.896%
Grand Total:	5	4,533,372	4,533,370		

Ideal Population Per Member:	906674	
Number of Districts for Plan Type:	5	
Range of District Populations:	864,269	to 930,075
Absolute Mean Deviation:	13,161	
Absolute Range:	-42,405	to 23,401
Absolute Overall Range:	65,806	
Relative Mean Deviation:	2.69%	
Relative Range:	-4.68%	to 2.58%
Relative Overall Range:	7.26%	

<i>Ideal - Actual:</i>	-2
<i>Remainder:</i>	2
<i>Unassigned Population:</i>	0

Total Population

	Total Population	Total White	Total Black	Total Asian	Total American Indian	Total Other	Total Hispanic	Reg Total Jan 2011
District 1	930,075	717,577	155,788	23,525	8,116	25,069	68,116	559,515
	100.000%	77.153%	16.750%	2.529%	0.873%	2.695%	7.324%	78.760%
District 2	927,139	673,260	206,185	15,756	15,988	15,950	33,474	546,245
	100.000%	72.617%	22.239%	1.699%	1.724%	1.720%	3.610%	77.843%
District 3	864,269	282,469	535,791	21,788	4,047	20,174	44,261	501,009
	100.000%	32.683%	61.994%	2.521%	0.468%	2.334%	5.121%	77.141%
District 4	888,023	625,475	230,506	10,880	10,588	10,574	23,388	527,310
	100.000%	70.435%	25.957%	1.225%	1.192%	1.191%	2.634%	80.238%
District 5	923,866	537,411	358,615	9,602	7,814	10,424	23,321	546,296
	100.000%	58.170%	38.817%	1.039%	0.846%	1.128%	2.524%	78.427%
Grand Total	4,533,372	2,836,192	1,486,885	81,551	46,553	82,191	192,560	2,680,375
	100.000%	62.563%	32.799%	1.799%	1.027%	1.813%	4.248%	78.480%

Voter Registration

	Reg Total Jan 2011	Reg White Jan 2011	Reg Black Jan 2011	Reg Other Jan 2011	Reg Dem Total Jan 2011	Reg Rep Total Jan 2011	Reg Other Total Jan 2011
District 1	559,515	449,960	74,348	35,207	222,533	195,549	141,433
	78.760%	80.420%	13.288%	6.292%	39.772%	34.950%	25.278%
District 2	546,245	420,701	103,823	21,721	239,521	177,005	129,719
	77.843%	77.017%	19.007%	3.976%	43.849%	32.404%	23.747%
District 3	501,009	168,093	306,002	26,914	333,123	63,848	104,038
	77.141%	33.551%	61.077%	5.372%	66.490%	12.744%	20.766%
District 4	527,310	387,341	125,210	14,759	287,058	124,220	116,032
	80.238%	73.456%	23.745%	2.799%	54.438%	23.557%	22.005%
District 5	546,296	335,022	194,694	16,580	272,751	157,568	115,977
	78.427%	61.326%	35.639%	3.035%	49.927%	28.843%	21.230%
Grand Total	2,680,375	1,761,117	804,077	115,181	1,354,986	718,190	607,199

Splits

	Total Population	Total White	Total Black	Total Asian	Total American Indian	Total Other	VAP Total	VAP White	VAP Black	VAP Asian	VAP American Indian	VAP Other	Reg Total Jan 2011	Reg White Jan 2011	Reg Black Jan 2011	Reg Other Jan 2011
District 1																
*Ascension	41,247	37,626	2,302	283	273	763	29,901	27,586	1,456	183	195	481	25,290	23,377	1,052	861
*Jefferson	325,451	244,430	48,137	14,721	2,723	15,440	257,447	198,945	33,808	11,111	2,021	11,562	193,143	154,515	20,726	17,902
*Livingston	34,217	31,363	2,143	165	272	274	25,566	23,611	1,463	108	209	175	19,921	18,349	1,120	452
*Orleans	44,456	38,199	3,738	1,566	232	721	36,923	31,986	2,904	1,297	169	567	29,187	24,601	1,824	2,762
Plaquemines	23,042	16,246	4,951	844	556	445	16,713	12,086	3,367	583	396	281	14,534	10,541	3,075	918
St. Bernard	35,897	26,579	6,705	873	522	1,218	26,720	20,490	4,338	640	370	882	23,358	19,332	2,829	1,197
*St. Charles	12,557	11,048	1,084	150	145	130	9,112	8,157	677	99	94	85	7,764	7,026	482	256
St. Helena	11,203	5,034	6,014	16	72	67	8,440	4,036	4,291	11	60	42	8,432	3,816	4,517	99
St. Tammany	233,740	195,364	28,449	3,807	2,182	3,938	173,604	147,964	18,752	2,570	1,579	2,739	143,614	121,851	13,495	8,268
Tangipahoa	121,097	80,206	37,381	955	834	1,721	90,677	63,131	25,059	710	631	1,146	68,664	48,579	17,989	2,096
Washington	47,168	31,482	14,884	145	305	352	35,305	24,363	10,374	101	238	229	25,608	17,973	7,239	396
District 1	930,075	717,577	155,788	23,525	8,116	25,069	710,408	562,355	106,489	17,413	5,962	18,189	559,515	449,960	74,348	35,207
	100.000%	77.153%	16.750%	2.529%	0.873%	2.695%	100.000%	79.159%	14.990%	2.451%	0.839%	2.560%	78.760%	80.420%	13.288%	6.292%
District 2																
*East Baton Rouge	215,524	162,490	41,351	7,120	1,114	3,449	169,521	131,982	28,857	5,341	838	2,503	134,204	110,167	17,997	6,040
East Feliciana	20,267	10,783	9,250	67	127	40	16,075	8,775	7,123	58	94	25	13,411	7,629	5,126	656
*Iberia	881	531	334	0	2	14	619	388	224	0	2	5	681	434	242	5
*Iberville	8,035	5,646	2,245	29	56	59	6,264	4,462	1,689	20	46	47	5,662	3,964	1,622	76
Lafayette	221,578	153,706	58,912	3,891	1,290	3,779	167,315	120,566	40,203	2,884	951	2,711	131,124	95,632	30,155	5,337
Lafourche	96,318	76,445	13,363	855	3,457	2,198	72,652	59,362	8,945	612	2,187	1,546	53,711	45,827	6,316	1,568
*Livingston	93,809	86,238	4,798	741	783	1,249	67,130	62,244	3,072	457	573	784	51,659	48,159	1,865	1,635
Pointe Coupee	22,802	14,010	8,427	69	71	225	17,327	11,073	6,020	44	57	133	15,464	9,584	5,696	184
St. Martin	52,160	34,313	16,397	478	350	622	38,389	26,320	11,090	316	227	436	33,849	22,866	9,886	1,097
St. Mary	54,650	32,406	18,290	1,058	1,269	1,627	40,746	25,191	12,797	773	837	1,148	31,845	20,072	10,527	1,246
Terrebonne	111,860	78,591	22,072	1,333	7,375	2,489	82,737	60,621	14,647	986	4,725	1,758	59,299	45,337	10,268	3,694
*West Baton Rouge	13,630	9,976	3,429	73	59	93	10,046	7,494	2,402	54	42	54	8,540	6,582	1,869	89
West Feliciana	15,625	8,125	7,317	42	35	106	12,907	6,412	6,364	24	33	74	6,796	4,448	2,254	94
District 2	927,139	673,260	206,185	15,756	15,988	15,950	701,728	524,890	143,433	11,569	10,612	11,224	546,245	420,701	103,823	21,721
	100.000%	72.617%	22.239%	1.699%	1.724%	1.720%	100.000%	74.800%	20.440%	1.649%	1.512%	1.599%	77.843%	77.017%	19.007%	3.976%
District 3																
*Ascension	65,968	40,946	22,164	951	313	1,594	46,559	29,751	14,955	633	217	1,003	38,814	24,855	12,204	1,755
Assumption	23,421	15,635	7,250	68	190	278	17,665	12,196	5,099	51	125	194	14,788	10,093	4,586	109
*East Baton Rouge	224,647	52,437	161,183	6,444	799	3,784	166,985	45,893	112,439	5,130	648	2,875	118,413	27,984	85,813	4,616
*Iberville	25,352	10,634	14,375	95	61	187	19,621	8,792	10,569	65	52	143	14,790	6,450	8,132	208
*Jefferson	107,101	27,685	68,862	3,922	679	5,953	77,708	22,328	47,494	2,999	468	4,419	58,934	14,612	39,407	4,915

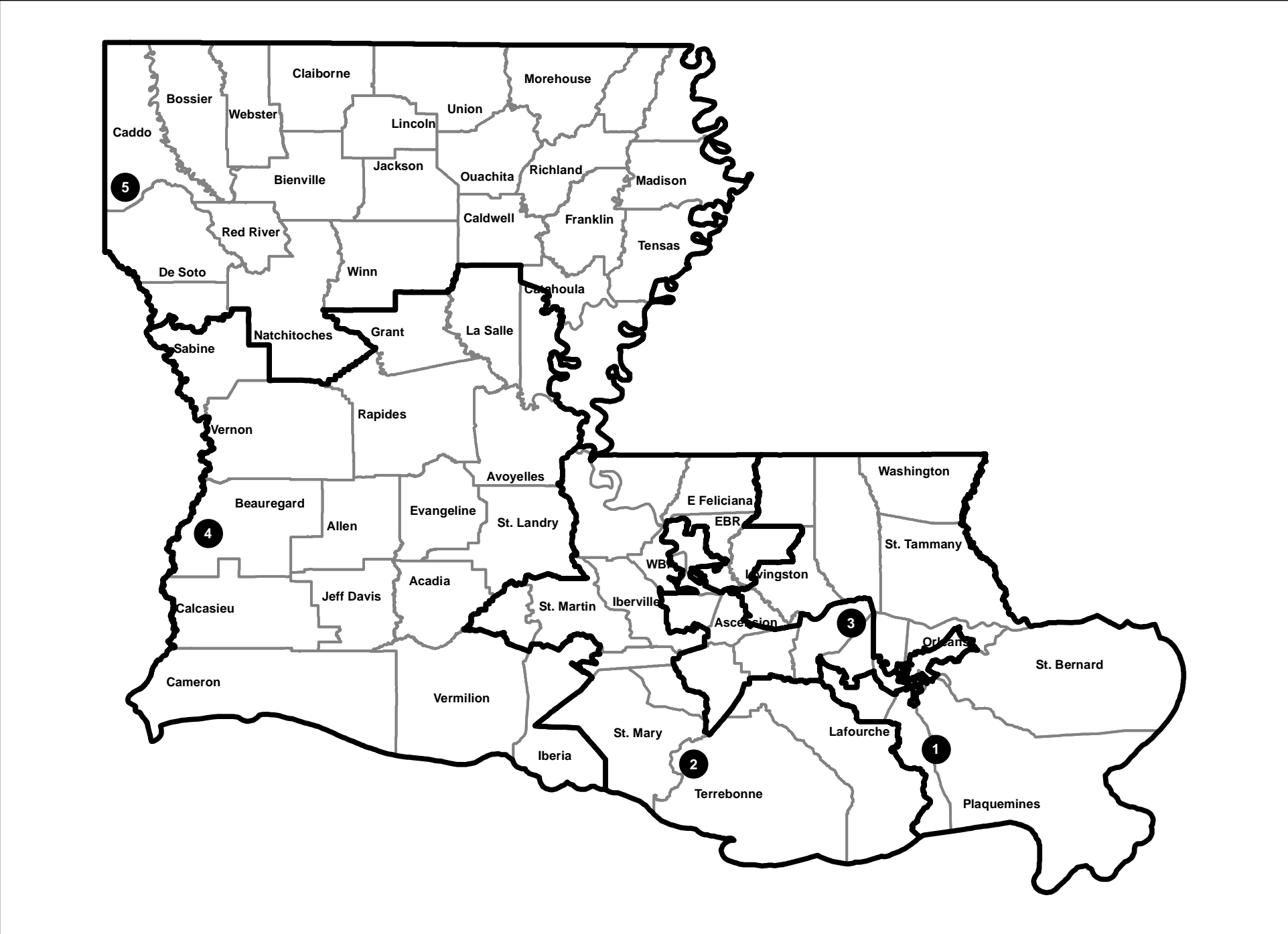
Splits

	Total Population	Total White	Total Black	Total Asian	Total American Indian	Total Other	VAP Total	VAP White	VAP Black	VAP Asian	VAP American Indian	VAP Other	Reg Total Jan 2011	Reg White Jan 2011	Reg Black Jan 2011	Reg Other Jan 2011
District 3																
*Orleans	299,373	75,229	206,709	9,385	1,464	6,586	233,691	67,694	151,790	7,543	1,230	5,434	182,585	45,835	123,824	12,926
*St. Charles	40,223	25,492	13,311	425	226	769	29,460	19,288	9,191	258	169	554	23,941	15,887	6,972	1,082
St. James	22,102	10,615	11,290	43	52	102	16,401	8,231	8,039	26	41	64	14,703	7,249	7,260	194
St. John the Baptist	45,924	19,501	24,944	414	237	828	33,568	15,408	17,127	290	164	579	27,785	12,466	14,265	1,054
*West Baton Rouge	10,158	4,295	5,703	41	26	93	7,815	3,573	4,115	38	25	64	6,256	2,662	3,539	55
District 3	864,269	282,469	535,791	21,788	4,047	20,174	649,473	233,154	380,818	17,033	3,139	15,329	501,009	168,093	306,002	26,914
	100.000%	32.683%	61.994%	2.521%	0.468%	2.334%	100.000%	35.899%	58.635%	2.623%	0.483%	2.360%	77.141%	33.551%	61.077%	5.372%
District 4																
Acadia	61,773	49,127	11,645	196	313	492	44,910	36,554	7,668	131	213	344	37,256	30,346	6,441	469
Allen	25,764	18,435	6,192	220	749	168	19,870	14,288	4,828	154	495	105	13,110	10,190	2,397	523
Avoyelles	42,073	28,188	12,876	174	641	194	31,790	21,850	9,247	126	431	136	23,105	16,874	5,790	441
Beauregard	35,654	29,321	5,016	353	652	312	26,359	21,902	3,569	239	460	189	19,924	16,703	2,304	917
Calcasieu	192,768	136,514	49,825	2,550	1,626	2,253	143,756	105,077	34,139	1,846	1,187	1,507	117,844	86,021	27,975	3,848
Cameron	6,839	6,546	135	10	60	88	5,183	5,011	74	9	38	51	5,536	5,272	188	76
*Catahoula	6,326	4,370	1,889	5	37	25	4,761	3,440	1,275	4	29	13	4,455	3,175	1,262	18
Evangeline	33,984	23,439	9,862	139	161	383	24,817	17,619	6,661	97	117	323	21,407	15,267	5,973	167
Grant	22,309	18,149	3,602	97	385	76	17,158	13,788	2,978	67	274	51	11,900	10,361	1,284	255
*Iberia	72,359	45,020	23,757	1,926	426	1,230	52,779	34,749	15,530	1,308	305	887	44,458	29,582	13,675	1,201
Jefferson Davis	31,594	25,125	5,836	98	275	260	23,196	18,871	3,891	66	180	188	19,337	15,808	3,132	397
La Salle	14,890	12,689	1,808	40	215	138	11,366	9,677	1,402	35	143	109	8,427	7,648	621	158
Rapides	131,613	83,373	43,150	1,912	1,682	1,496	97,599	64,579	29,368	1,377	1,270	1,005	78,056	53,328	22,107	2,621
*Sabine	16,360	12,028	2,793	65	1,407	67	12,593	9,624	1,896	52	981	40	9,573	7,633	1,347	593
St. Landry	83,384	46,615	35,153	395	406	815	60,704	35,593	23,997	266	278	570	56,549	31,901	23,591	1,057
Vermilion	57,999	46,922	8,654	1,274	376	773	42,522	35,424	5,457	902	259	480	34,753	29,351	4,628	774
Vernon	52,334	39,614	8,313	1,426	1,177	1,804	37,822	29,416	5,349	1,026	848	1,183	21,620	17,881	2,495	1,244
District 4	888,023	625,475	230,506	10,880	10,588	10,574	657,185	477,462	157,329	7,705	7,508	7,181	527,310	387,341	125,210	14,759
	100.000%	70.435%	25.957%	1.225%	1.192%	1.191%	100.000%	72.653%	23.940%	1.172%	1.142%	1.093%	80.238%	73.456%	23.745%	2.799%
District 5																
Bienville	14,353	7,935	6,153	44	132	89	11,012	6,279	4,544	31	105	53	9,256	5,112	4,085	59
Bossier	116,979	84,430	25,606	2,516	1,139	3,288	86,945	64,692	17,413	1,836	837	2,167	60,834	46,663	11,491	2,680
Caddo	254,969	124,942	122,229	3,230	1,906	2,662	192,315	100,748	85,902	2,363	1,455	1,847	151,374	79,163	66,708	5,503
Caldwell	10,132	8,213	1,778	30	64	47	7,758	6,314	1,336	23	51	34	6,324	5,351	911	62
*Catahoula	4,081	2,615	1,429	4	16	17	3,296	2,103	1,163	4	14	12	1,925	1,574	334	17
Claiborne	17,195	8,167	8,820	62	99	47	13,815	6,781	6,889	37	80	28	8,877	4,908	3,872	97
Concordia	20,822	11,959	8,604	59	123	77	15,589	9,298	6,117	41	88	45	12,696	7,997	4,529	170

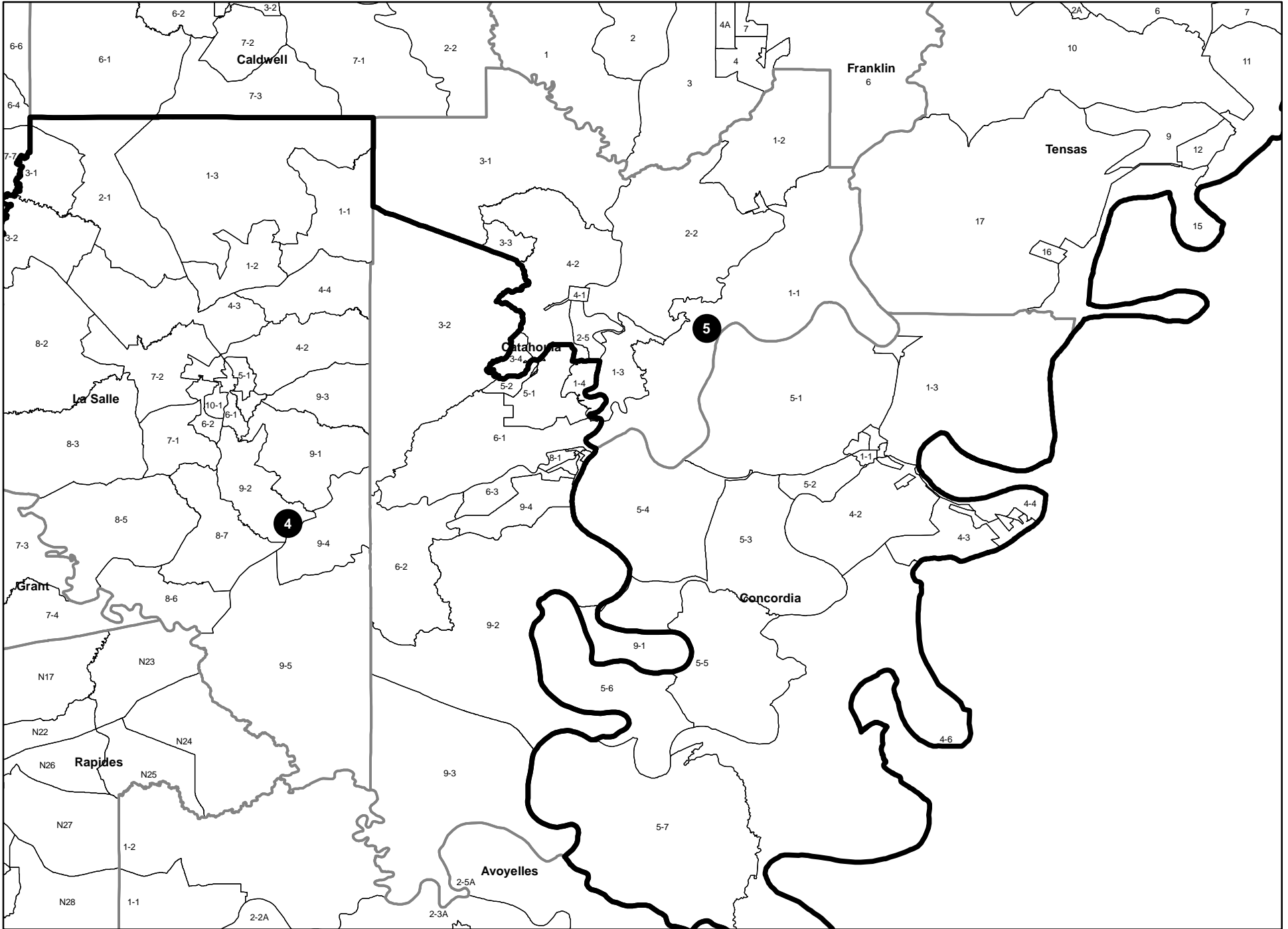
Splits

	Total Population	Total White	Total Black	Total Asian	Total American Indian	Total Other	VAP Total	VAP White	VAP Black	VAP Asian	VAP American Indian	VAP Other	Reg Total Jan 2011	Reg White Jan 2011	Reg Black Jan 2011	Reg Other Jan 2011
District 5																
De Soto	26,656	15,456	10,600	54	331	215	20,006	12,055	7,495	42	273	141	16,396	9,663	6,191	542
East Carroll	7,759	2,245	5,398	47	31	38	5,766	1,845	3,830	37	25	29	5,330	1,617	3,664	49
Franklin	20,767	13,930	6,620	65	82	70	15,450	10,838	4,471	42	63	36	13,466	9,408	3,978	80
Jackson	16,274	11,084	4,947	67	83	93	12,570	8,681	3,724	39	65	61	9,846	6,879	2,805	162
Lincoln	46,735	25,775	19,184	874	230	672	37,130	20,875	14,821	749	183	502	24,016	14,604	8,519	893
Madison	12,093	4,498	7,452	33	55	55	9,071	3,644	5,312	20	45	50	7,634	2,780	4,764	90
Morehouse	27,979	14,345	13,281	142	102	109	21,061	11,583	9,230	102	79	67	18,681	10,048	8,329	304
Natchitoches	39,566	21,494	16,778	197	649	448	29,966	17,226	11,771	151	477	341	22,982	13,181	8,878	923
Ouachita	153,720	92,884	57,194	1,722	705	1,215	113,347	72,316	38,405	1,248	549	829	94,408	59,945	30,997	3,466
Red River	9,091	5,360	3,633	16	43	39	6,778	4,256	2,450	12	34	26	5,981	3,566	2,377	38
Richland	20,725	12,879	7,544	92	96	114	15,440	9,999	5,237	65	70	69	12,939	8,173	4,646	120
*Sabine	7,873	5,127	1,441	19	1,229	57	5,718	3,920	939	11	815	33	4,264	3,178	685	401
Tensas	5,252	2,202	2,991	13	15	31	3,923	1,796	2,085	11	9	22	4,131	1,807	2,304	20
Union	22,721	15,682	6,242	49	115	633	17,493	12,568	4,439	31	91	364	14,964	10,863	3,709	392
Webster	41,207	26,469	14,044	180	316	198	31,497	20,907	10,110	120	241	119	23,913	16,115	7,416	382
West Carroll	11,604	9,497	1,870	34	86	117	8,746	7,254	1,330	24	62	76	7,167	6,017	1,096	54
Winn	15,313	10,223	4,777	53	167	93	11,871	8,018	3,619	44	129	61	8,892	6,410	2,406	76
District 5	923,866	537,411	358,615	9,602	7,814	10,424	696,563	423,996	252,632	7,083	5,840	7,012	546,296	335,022	194,694	16,580
	100.000%	58.170%	38.817%	1.039%	0.846%	1.128%	100.000%	60.870%	36.268%	1.017%	0.838%	1.007%	78.427%	61.326%	35.639%	3.035%

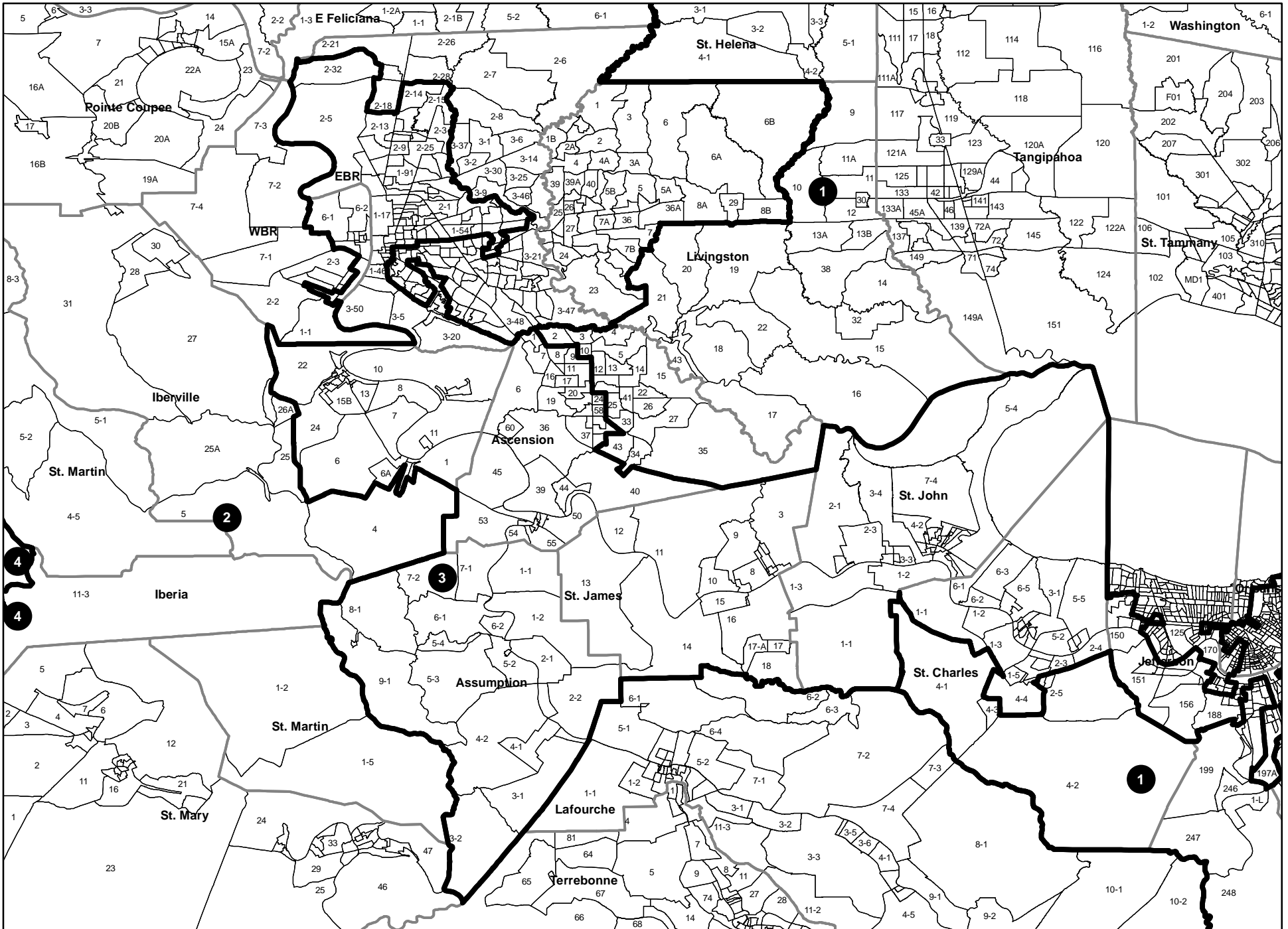
HB 38 Enrolled (Act 23)



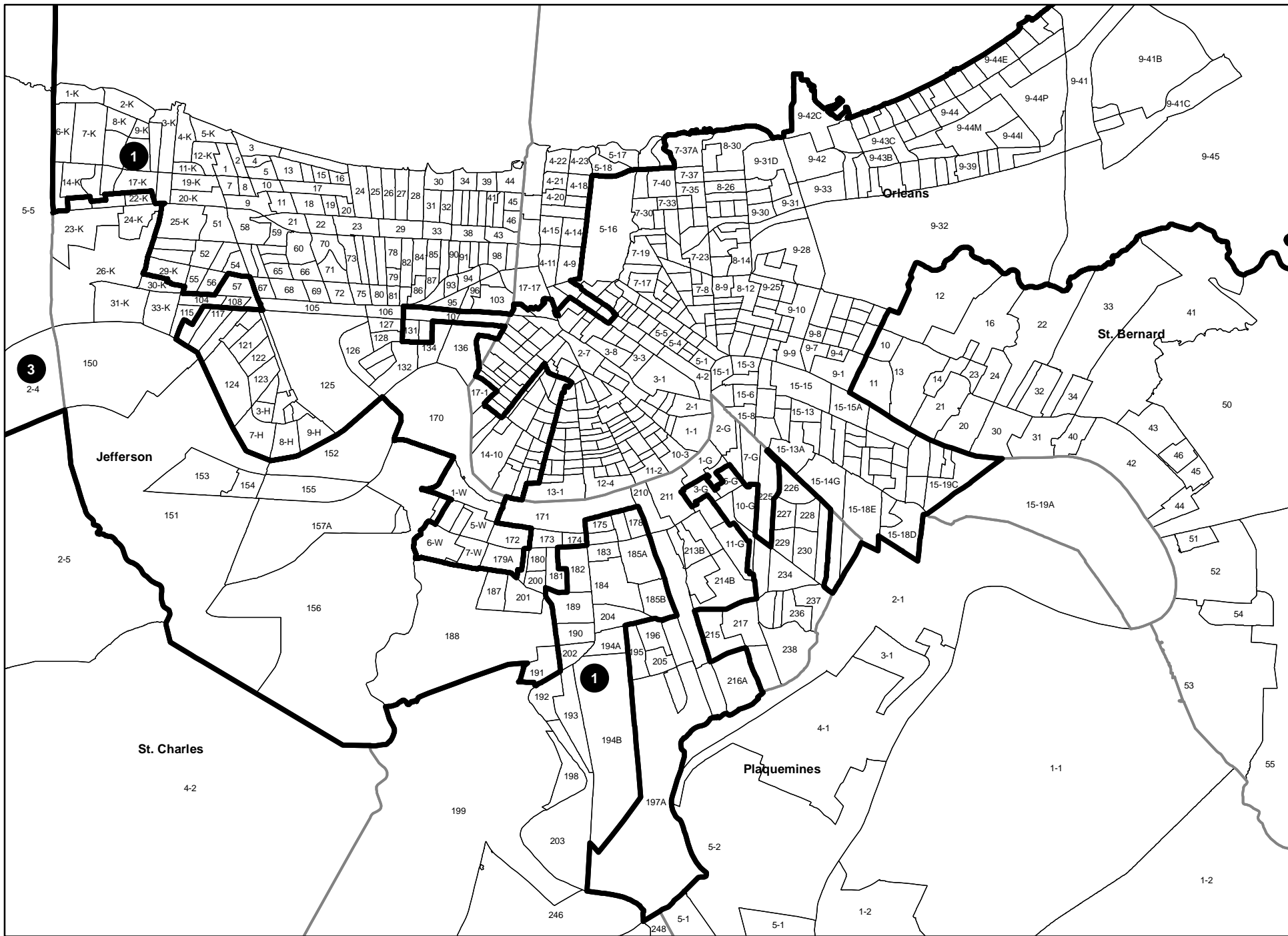
HB 38 Enrolled (Act 23) --- Catahoula Parish



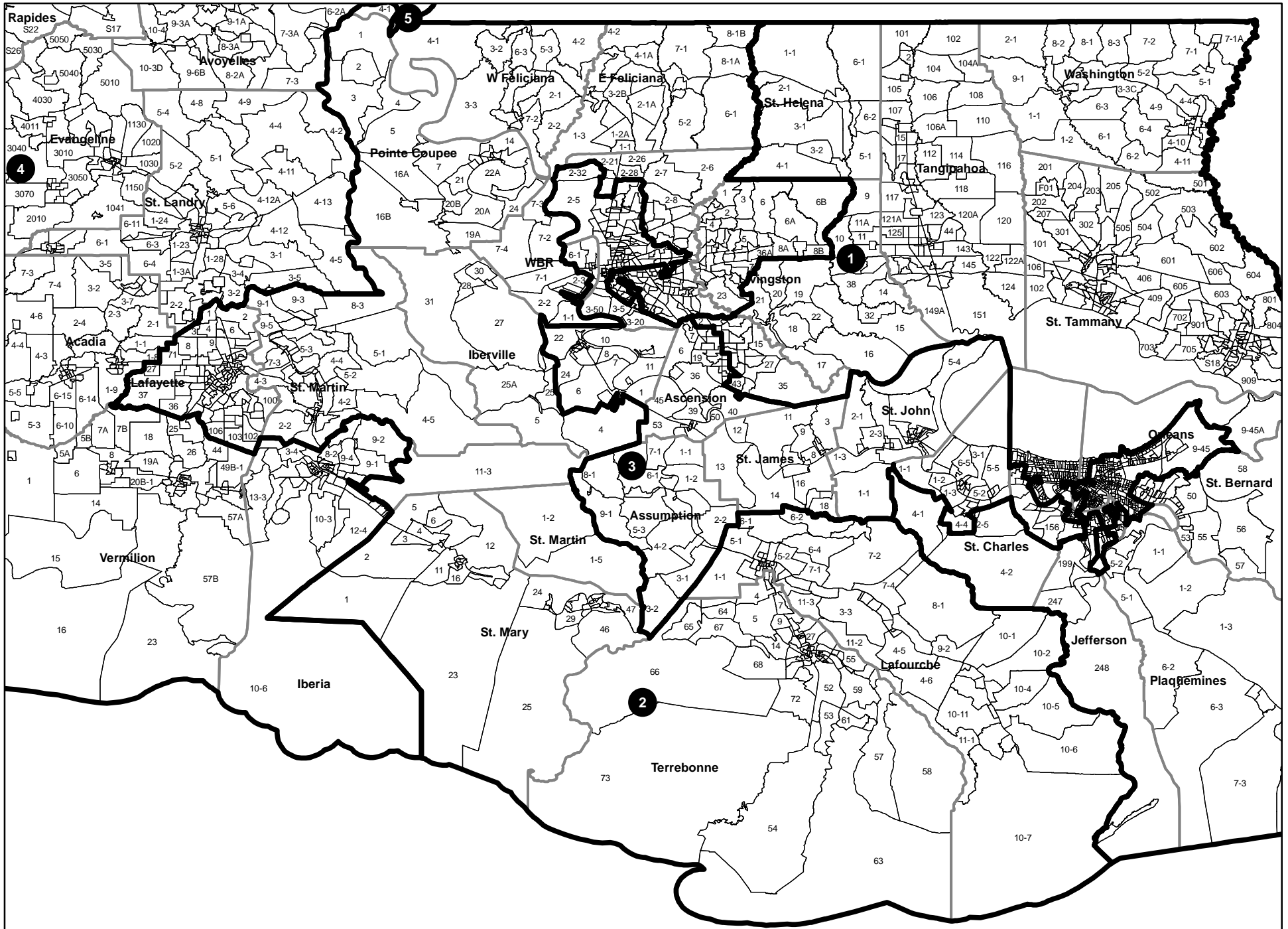
HB 38 Enrolled (Act 23) --- River Parishes



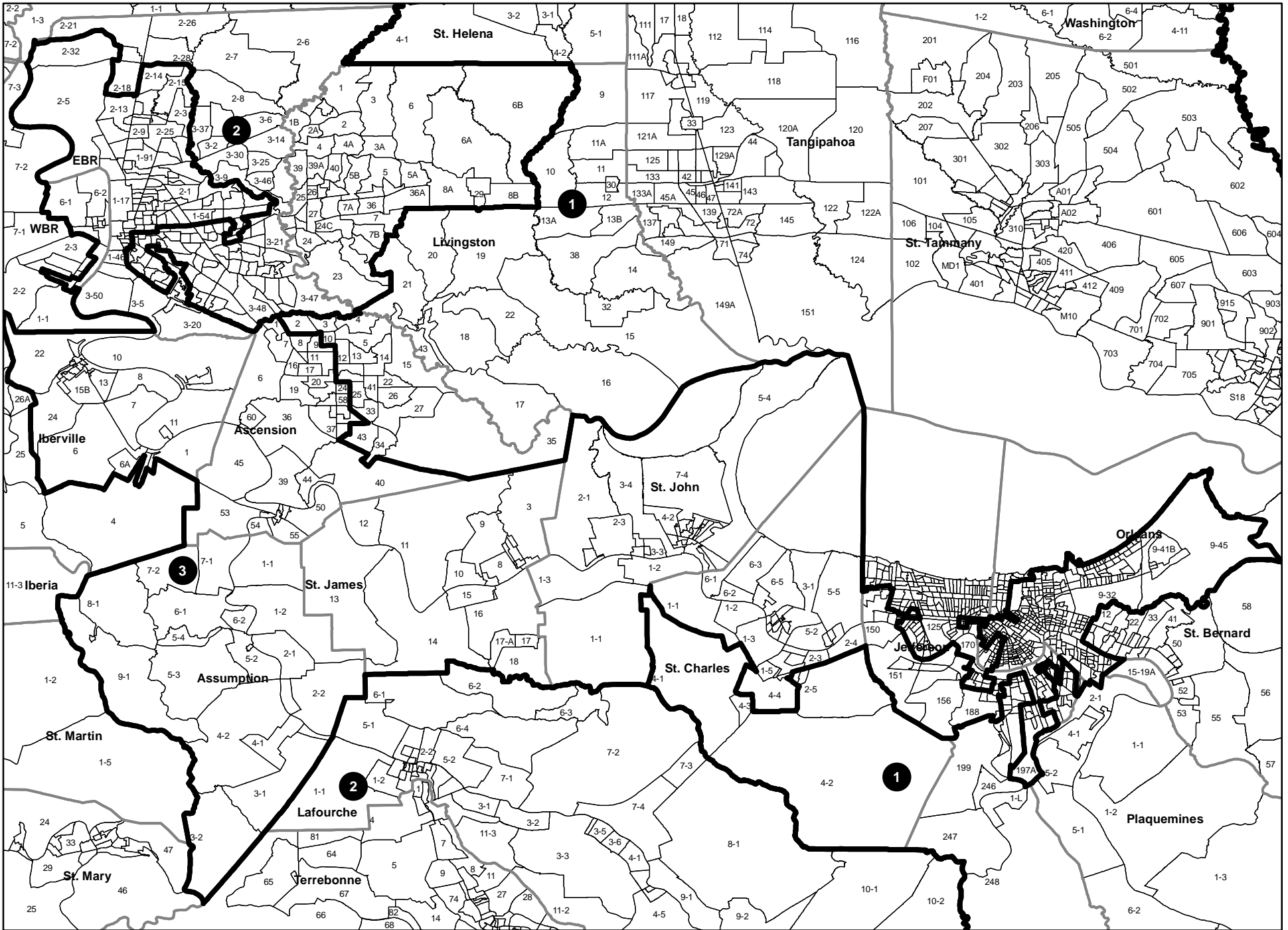
HB 38 Enrolled (Act 23) --- Orleans/Jefferson



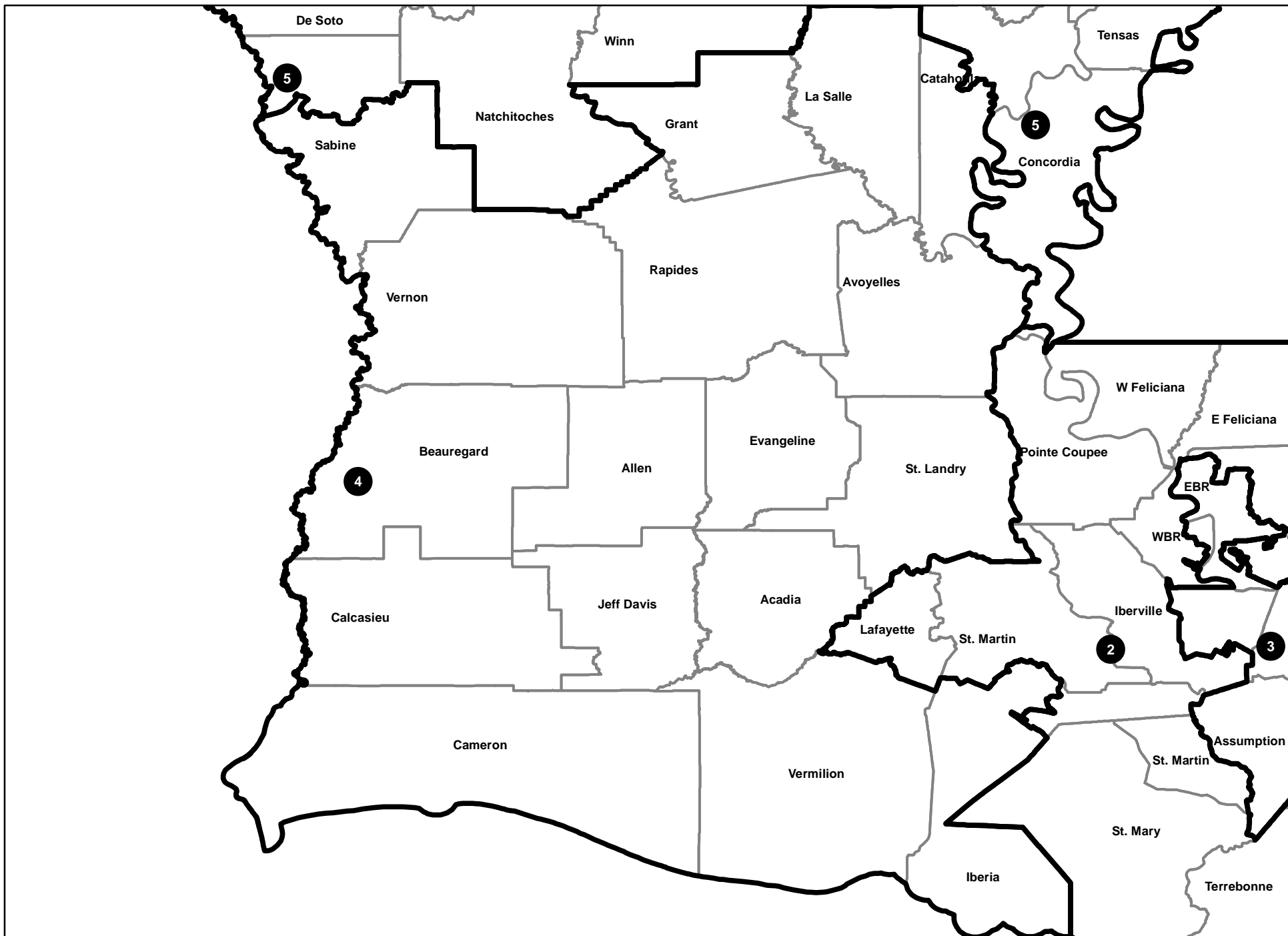
HB 38 Enrolled (Act 23) --- District 2



HB 38 Enrolled (Act 23) --- District 3



HB 38 Enrolled (Act 23) --- District 4



HB 38 Enrolled (Act 23) --- District 5

