

2022 First Extraordinary Session

HOUSE BILL NO. 18

BY REPRESENTATIVE WILFORD CARTER

REAPPORTIONMENT/JUDGES: Provides for the redistricting of the supreme court (Item #6)

1 AN ACT

2 To enact R.S. 13:101.2 and 101.3 and to repeal R.S. 13:101, 101.1, and 312.4, relative to the
3 supreme court; to provide relative to redistricting supreme court justice districts; to
4 provide for the filling of vacancies; to eliminate statutory provisions for a temporary
5 additional judgeship for the Court of Appeal for the Fourth Circuit and such judge's
6 appointment to the supreme court; and to provide for related matters.

7 Be it enacted by the Legislature of Louisiana:

8 Section 1. R.S. 13:101.2 and 101.3 are hereby enacted to read as follows:

9 §101.2. Supreme court districts; justices

10 The state shall be divided into seven supreme court districts. The supreme
11 court shall be composed of one justice elected from each of the seven districts as set
12 forth below:

- 13 (1) District 1 is composed of Precincts 1, 2, 3, 4, 5, 7, 8, 9, 10, 11, 12, 13, 14,
- 14 15, 16, 17, 18, 19, 20, 21, 22, 23, 24, 25, 26, 27, 28, 29, 30, 31, 32, 33, 34, 35, 36, 37,
- 15 38, 39, 40, 41, 42, 43, 44, 45, 46, 51, 52, 53, 54, 55, 56, 57, 58, 59, 60, 61, 62, 63, 64,
- 16 65, 66, 67, 68, 69, 70, 71, 72, 73, 74, 75, 76, 77, 78, 79, 80, 81, 82, 83, 84, 85, 86, 87,
- 17 88, 89, 90, 91, 92, 93, 94, 95, 96, 97, 98, 99, 100, 101, 102, 103, 105, 106, 116, 117,
- 18 118, 119, 120, 121, 122, 123, 124, 125A, 125B, 126, 127, 128, 129, 130, 132, 134,
- 19 136, 138, 1-H, 2-H, 3-H, 4-H, 5-H, 6-H, 7-H, 8-H, 9-H, 1-K, 2-K, 3-K, 4-K, 5-K,
- 20 6-KA, 6-KB, 7-KA, 7-KB, 8-K, 9-K, 10-K, 11-K, 12-K, 13-KA, 13-KB, 14-K, 15-K,

1 16-K, 17-K, 18-K, 19-K, 20-K, 25-K, 27-K, 28-K, 29-K, 30-K, 34-K, and 35-K of
2 Jefferson Parish; Precincts 13A, 13B, 14, 15, 16, 19A, 31, 32, and 38 of Livingston
3 Parish; Precincts 3-14, 3-19, 3-20, 4-7, 4-8, 4-9, 4-11, 4-14, 4-15, 4-17, 4-17A, 4-18,
4 4-20, 4-21, 4-22, 4-23, 5-11, 5-12, 5-13, 5-15, 5-16, 5-17, 5-18, 6-8, 6-9, 7-12, 7-17,
5 7-32, 7-40, 7-41, 7-42, 9-45, 9-45A, 14-1, 14-2, 14-3, 14-4, 14-5, 14-6, 14-7, 14-8,
6 14-9, 14-10, 14-11, 14-12, 14-13A, 14-14, 14-15, 14-16, 14-17, 14-18A, 14-19,
7 14-20, 14-21, 16-1, 16-1A, 16-2, 16-3, 16-4, 16-5, 16-6, 16-7, 16-8, 17-1, 17-17,
8 17-18, 17-18A, 17-19, and 17-20 of Orleans Parish; Precincts 1-6, 2-1, 2-6, 3-1, 3-2,
9 3-3, 5-3, 5-5, 6-1, 6-2, 6-4, 6-6, 6-7, and 6-8 of St. Charles Parish; Precincts 4-13,
10 5-4, 5-7, and 5-8 of St. John the Baptist Parish; St. Tammany Parish; Precincts 28,
11 33, 44, 70, 70A, 71, 72, 72A, 73, 74, 102, 104, 104A, 106, 106A, 108, 110, 112, 114,
12 116, 118, 119, 120, 120A, 120B, 121, 122, 122A, 122B, 123, 124, 124A, 137, 137A,
13 137B, 137C, 137D, 139, 141, 141A, 143, 143A, 145, 147, 149, 149A, and 151 of
14 Tangipahoa Parish; and Washington Parish.

15 (2) District 2 is composed of Bienville Parish; Bossier Parish; Caddo Parish;
16 Claiborne Parish; DeSoto Parish; East Carroll Parish; Franklin Parish; Lincoln
17 Parish; Madison Parish; Morehouse Parish; Precincts 1, 1A, 2, 3, 4, 5, 6, 7, 8, 9, 50,
18 66, 67, 68, 72, 73, 75, and 76 of Ouachita Parish; Richland Parish; Tensas Parish;
19 Union Parish; Webster Parish; and West Carroll Parish.

20 (3) District 3 is composed of Precincts 1-1, 1-2, 1-3, 1-4, 1-5, 1-6, 1-8, 1-9,
21 2-1, 2-2, 5-1, 5-2, 5-3, 5-4, 5-5, 6-1, 6-2, 6-3, 6-4, 6-5, 6-6, 6-7, 6-8, 6-10, 6-12, 6-13,
22 6-14, 6-15, and 6-16 of Acadia Parish; Precincts 160E, 160W, 161, 162E, 162W,
23 163, 164, 165, 166E, 166W, 167, 260, 261, 262, 306, 314, 316E, 316W, 317, 318,
24 325, 326, 327, 331, 332N, 332S, 333, 334, 335, 336, 337, 338, 339, 340, 360, 362,
25 363, 365, 366, 367, 368, 369, 370, 371S, 372, 400, 401, 402, 403, 404, 405, 406,
26 407, 408, 440, 441, 460E, 460W, 461, 463, 464, 465, 466E, 466W, 467, 468, 469,
27 560, 561, 562, 600, 601, 602, 603, 660, 661, 662, 663, 664, 700, 701, 702, 703, 760,
28 761, 762, 800, 801, 860N, 860S, and 861W of Calcasieu Parish; Cameron Parish;
29 Iberia Parish; Precincts 4, 5, 25, 26, and 27 of Iberville Parish; Precincts 1, 2, 3, and

1 4 of Jefferson Davis Parish; Precincts 2, 3, 6, 8, 9, 10, 12, 13, 25, 26, 27, 28, 29, 30,
 2 31, 32, 33, 34, 35, 36, 37, 38, 39, 40, 41, 42, 43, 44, 45, 46, 47, 48, 49, 65, 66, 67, 69,
 3 70, 71, 72, 73, 74, 75, 76, 77, 78, 79, 80, 81, 82, 83, 84, 85, 86, 87, 88, 89, 90, 91, 92,
 4 93, 94, 95, 96, 97, 98, 99, 100, 101, 102, 103, 104, 105, 106, 107, 108, 109, 110, 111,
 5 113, 114, 115, 116, 117, 118, 119, 120, 121, 122, 124, 125, 126, 127, and 128 of
 6 Lafayette Parish; Precincts 7, 7A, 13, 14, 15, 16, 17, 29, 30, 31, 36, 37, 38, 39, and
 7 40 of St. Landry Parish; St. Martin Parish; St. Mary Parish; Precincts 13, 14, 15, 16,
 8 18, 19, 20, 21, 23, 25, 29, 31, 32, 34, 35, 36, 38, 41, 43, 45, 46, 48, 49, 51, 52, 53, 54,
 9 55, 56, 57, 58, 59, 60, 61, 63, 64, 65, 67, 68, 69, 71, 72, 73, 74, 82, 83, 84, 85, 86, 87,
 10 88, 89, 90, 110, and 111 of Terrebonne Parish; and Vermilion Parish.

11 (4) District 4 is composed of Precincts 2-3, 2-5, 3-7, 4-4, and 4-5 of Acadia
 12 Parish; Precinct 7-1 of Avoyelles Parish; Precincts 300, 301, 302, 303, 304, 305, 307,
 13 308, 309E, 309W, 310, 311, 312, 313E, 313W, 315E, 315W, 319N, 319S, 320E,
 14 320W, 321, 322, 323, 324, 328, 329, 330, 361, 364, 371N, and 861E of Calcasieu
 15 Parish; Precincts 1-1, 1-2, 1-3, 1-4, 1-5, 1-6, 1-10, 1-11, 1-12, 1-13, 1-14, 1-15, 1-16,
 16 1-17, 1-18, 1-19, 1-20, 1-21, 1-22, 1-23, 1-24, 1-25, 1-26, 1-27, 1-28, 1-29, 1-30,
 17 1-31, 1-32, 1-36, 1-37, 1-38, 1-43, 1-45, 1-46, 1-47, 1-50, 1-51, 1-54, 1-56, 1-58,
 18 1-59, 1-61, 1-62, 1-63, 1-66, 1-67, 1-68, 1-70, 1-73, 1-75, 1-76, 1-77, 1-78, 1-82,
 19 1-83, 1-84, 1-85, 1-86, 1-88, 1-91, 1-92, 1-93, 1-94, 1-95, 1-97, 1-100, 1-101, 1-102,
 20 1-104, 2-1, 2-2, 2-3, 2-4, 2-5, 2-9, 2-10, 2-11, 2-12, 2-13, 2-14, 2-15, 2-16, 2-17,
 21 2-18, 2-19, 2-20, 2-21, 2-22, 2-23, 2-24, 2-25, 2-26, 2-27, 2-28, 2-29, 2-30, 2-31,
 22 2-32, 2-34, 2-35, 2-36, 2-37, 3-5, 3-8, 3-20, 3-24, 3-44, 3-50, 3-54, 3-55, 3-57, and
 23 3-69 of East Baton Rouge Parish; East Feliciana Parish; Precincts 1, 3, 6, 7, 9, 10,
 24 11, 12, 13, 13C, 14, 14A, 15, 15B, 16, 17, 18, 19, 20, 21, 22, 23, 24, 28, 29, 31, and
 25 32 of Iberville Parish; Precincts 5, 6, 8, 8A, 9B, 20, 21, and 23 of Jefferson Davis
 26 Parish; Precincts 1, 4, 5, 7, 11, 14, 15, 16, 17, 18, 19, 20, 21, 22, 23, 24, 51, 52, 53,
 27 54, 55, 56, 57, 58, 59, 60, 61, 62, 63, 64, 68, 112, and 123 of Lafayette Parish; Pointe
 28 Coupee Parish; St. Helena Parish; Precincts 1, 2, 3, 4, 5, 6, 8, 9, 10, 11, 12, 18, 19,
 29 20, 21, 22, 23, 24, 25, 26, 27, 28, 32, 33, 34, 35, 41, 42, 43, 44, 48, 49, 50, and 51 of

1 St. Landry Parish; Precincts 1, 2, 6, 11, 15, 16, 17, 18, 26, 27, 40, 40A, 41, 42, 42A,
 2 43, 45, 45A, 46, 47, 48, 49, 101, 105, 107, 109, 111A, 115B, 117, 121A, 125, 127,
 3 127A, 129, 129A, 133, and 133A of Tangipahoa Parish; West Baton Rouge Parish;
 4 and Precincts 4 and 9 of West Feliciana Parish.

5 (5) District 5 is composed of Precincts 3-1, 3-2, 3-3, 3-4, 3-5, 4-1, 4-2, 4-6,
 6 7-2, 7-3, and 7-4 of Acadia Parish; Allen Parish; Precincts 1-1, 1-2, 1-3, 2-1, 2-2,
 7 2-2A, 2-2B, 2-2C, 2-2D, 2-2F, 2-3A, 2-4, 2-4A, 2-5, 2-5E, 2-7, 2-8, 3-1, 3-1B, 3-3,
 8 4-1, 4-2, 4-2A, 5-1, 5-1A, 6-1A, 6-2, 6-2A, 7-3, 7-3B, 8-1, 8-2A, 8-2B, 8-3, 8-3A,
 9 9-1A, 9-2, 9-2A, 9-3, 9-4, 9-4B, 9-5B, 10-2, 10-2A, 10-3A, 10-4, 11-1, and 11-2A
 10 of Avoyelles Parish; Beauregard Parish; Caldwell Parish; Catahoula Parish;
 11 Concordia Parish; Evangeline Parish; Grant Parish; Jackson Parish; Precincts 7, 9A,
 12 10, 12, 13, 14, 16, 17, 18, and 19 of Jefferson Davis Parish; Parish; Natchitoches
 13 Parish; Precincts 9A, 10, 11, 12, 13, 14, 15, 16, 17, 18, 19, 20, 21, 22, 23, 24, 25, 26,
 14 27, 27A, 28, 29, 30, 31, 32, 33, 34, 35, 36, 37, 38, 39, 40, 41, 42, 43, 44, 44A, 45, 46,
 15 47, 48, 49, 51, 51A, 52, 52A, 53, 54, 55, 56, 56A, 57, 58, 59, 60, 61, 62, 63, 64, 65,
 16 65A, 69, 70, 71, 74, 77, 78, and 79 of Ouachita Parish; Rapides Parish; Red River
 17 Parish; Sabine Parish; Precincts 45, 46, 47, and 52 of St. Landry Parish; Vernon
 18 Parish; Precincts 1, 2, 3, 5, 6, 7, 8, 10, 11, 12, and 13 of West Feliciana Parish; and
 19 Winn Parish.

20 (6) District 6 is composed of Ascension Parish; Assumption Parish; Precincts
 21 1-7, 1-8, 1-9, 1-33, 1-34, 1-35, 1-39, 1-40, 1-41, 1-42, 1-44, 1-48, 1-49, 1-52, 1-53,
 22 1-55, 1-57, 1-60, 1-64, 1-65, 1-69, 1-71, 1-72, 1-74, 1-79, 1-80, 1-81, 1-87, 1-89,
 23 1-90, 1-98, 1-99, 1-103, 1-105, 1-107, 2-6, 2-7, 2-8, 2-33, 3-1, 3-2, 3-3, 3-4, 3-6, 3-7,
 24 3-9, 3-10, 3-11, 3-12, 3-13, 3-14, 3-15, 3-16, 3-17, 3-18, 3-19, 3-21, 3-22, 3-23, 3-25,
 25 3-26, 3-27, 3-28, 3-29, 3-30, 3-31, 3-32, 3-33, 3-34, 3-35, 3-36, 3-37, 3-38, 3-39,
 26 3-40, 3-41, 3-43, 3-45, 3-46, 3-47, 3-48, 3-49, 3-51, 3-52, 3-53, 3-56, 3-58, 3-59,
 27 3-60, 3-61, 3-62, 3-63, 3-64, 3-65, 3-66, 3-67, 3-68, 3-70, 3-71, and 3-72 of East
 28 Baton Rouge Parish; Precincts 198, 199, 246, 247, 248, 1-GI, and 1-L of Jefferson
 29 Parish; Lafourche Parish; Precincts 1, 1A, 1B, 1C, 1D, 2, 2A, 3, 3A, 3B, 4, 4A, 4B,

1 5, 5A, 5B, 5C, 6, 6A, 6B, 7, 7A, 7B, 7C, 7D, 8A, 8B, 9, 10, 11, 11A, 12, 17, 18, 18A,
 2 19, 20, 21, 21A, 22, 23, 23A, 23B, 23C, 24, 24B, 24C, 25, 26, 26A, 26B, 26C, 27,
 3 28A, 28B, 29, 30, 33, 34, 35, 35A, 36, 36A, 39, 39A, 39B, 40, 40A, 41, and 43 of
 4 Livingston Parish; Plaquemines Parish; St. Bernard Parish; Precincts 2-5, 4-1, 4-2,
 5 4-3, 7-1, 7-2, and 7-3 of St. Charles Parish; Precincts 2, 3, 4, 6, 8, 9, and 11 of
 6 St. James Parish; Precincts 1-1, 2-1, 2-3, and 2-4 of St. John the Baptist Parish; and
 7 Precincts 1, 4, 5, 7, 8, 9, 10, 11, 12, 17, 27, and 76 of Terrebonne Parish.

8 (7) District 7 is composed of Precincts 104, 108, 115, 131, 133, 150, 151,
 9 152, 153, 154, 155, 156, 157A, 157B, 170, 171, 172, 173, 174, 175, 176, 177, 178,
 10 179A, 179B, 180, 181, 182, 183, 184, 185A, 185B, 187, 188, 189, 190, 191, 192,
 11 193A, 193B, 194A, 194B, 195, 196, 197A, 197B, 200, 201, 202, 203, 204, 205, 210,
 12 211, 212, 213A, 213B, 213C, 214A, 214B, 215, 216A, 216B, 216C, 217, 225, 226,
 13 227, 228, 229, 230, 231, 232A, 232B, 234, 235, 236, 237, 238A, 238B, 1-G, 2-G,
 14 3-G, 4-G, 5-G, 6-G, 7-G, 8-G, 9-G, 10-G, 11-G, 12-G, 13-G, 21-K, 22-K, 23-K,
 15 24-K, 26-K, 31-K, 33-K, 1-W, 2-W, 3-W, 4-W, 5-W, 6-W, and 7-W of Jefferson
 16 Parish; Precincts 1-1, 1-2, 1-5, 1-6, 2-1, 2-2, 2-4, 2-6, 2-7, 3-1, 3-8, 3-9, 3-12, 3-15,
 17 3-18, 4-2, 4-3, 4-5, 4-6, 5-1, 5-2, 5-3, 5-5, 5-7, 5-8, 5-9, 5-10, 6-1, 6-2, 6-4, 6-6, 6-7,
 18 7-1, 7-2, 7-4, 7-5, 7-6, 7-7, 7-8, 7-9A, 7-10, 7-11, 7-13, 7-14, 7-15, 7-16, 7-18, 7-19,
 19 7-20, 7-21, 7-23, 7-24, 7-25, 7-25A, 7-26, 7-27, 7-27B, 7-28, 7-28A, 7-29, 7-30,
 20 7-33, 7-35, 7-37, 7-37A, 8-1, 8-2, 8-4, 8-6, 8-7, 8-8, 8-9, 8-12, 8-13, 8-14, 8-15,
 21 8-19, 8-20, 8-21, 8-22, 8-23, 8-24, 8-25, 8-26, 8-27, 8-28, 8-30, 9-1, 9-3, 9-4, 9-5,
 22 9-6, 9-7, 9-8, 9-9, 9-10, 9-11, 9-12, 9-13, 9-14, 9-15, 9-16, 9-17, 9-19, 9-21, 9-23,
 23 9-25, 9-26, 9-28, 9-28C, 9-29, 9-30, 9-30A, 9-31, 9-31A, 9-31B, 9-31D, 9-32, 9-33,
 24 9-34A, 9-35, 9-35A, 9-36, 9-36B, 9-37, 9-38, 9-38A, 9-39, 9-39B, 9-40, 9-40A,
 25 9-40C, 9-41, 9-41A, 9-41B, 9-41C, 9-41D, 9-42, 9-42C, 9-43A, 9-43B, 9-43C,
 26 9-43E, 9-43F, 9-43G, 9-43H, 9-43I, 9-43J, 9-43K, 9-43L, 9-43M, 9-43N, 9-44,
 27 9-44A, 9-44B, 9-44D, 9-44E, 9-44F, 9-44G, 9-44I, 9-44J, 9-44L, 9-44M, 9-44N,
 28 9-44O, 9-44P, 9-44Q, 10-3, 10-6, 10-7, 10-8, 10-9, 10-11, 10-12, 10-13, 10-14, 11-2,
 29 11-3, 11-4, 11-5, 11-8, 11-9, 11-10, 11-11, 11-12, 11-13, 11-14, 11-17, 12-1, 12-2,

1 12-3, 12-4, 12-5, 12-6, 12-7, 12-8, 12-9, 12-10, 12-11, 12-12, 12-13, 12-14, 12-16,
2 12-17, 12-19, 13-1, 13-2, 13-3, 13-4, 13-5, 13-6, 13-7, 13-8, 13-9, 13-10, 13-11,
3 13-12, 13-13, 13-14, 13-15, 13-16, 14-23, 14-24A, 14-25, 14-26, 15-1, 15-2, 15-3,
4 15-5, 15-6, 15-8, 15-9, 15-10, 15-11, 15-12, 15-12A, 15-13, 15-13A, 15-13B, 15-14,
5 15-14A, 15-14B, 15-14C, 15-14D, 15-14E, 15-14F, 15-14G, 15-15, 15-15A, 15-15B,
6 15-16, 15-17, 15-17A, 15-17B, 15-18, 15-18A, 15-18B, 15-18C, 15-18D, 15-18E,
7 15-18F, 15-19, 15-19A, 15-19B, 15-19C, 16-9, 17-2, 17-3, 17-4, 17-5, 17-6, 17-7,
8 17-8, 17-9, 17-10, 17-11, 17-12, 17-13, 17-13A, 17-14, 17-15, and 17-16 of Orleans
9 Parish; Precincts 1-1, 1-2, 1-3, 1-5, 2-2, 2-3, 2-4, 4-4, 5-1, 5-4, and 7-4 of St. Charles
10 Parish; Precincts 1, 5, 7, 10, 12, 13, 14, 15, 16, 17, 18, and 19 of St. James Parish;
11 and Precincts 1-2, 1-3, 1-4, 1-5, 2-2, 3-1, 3-2, 3-4, 4-1, 4-2, 4-3, 4-14, 5-1, 6-1, 6-3,
12 6-4, 7-2, 7-3, 7-5, and 7-7 of St. John the Baptist Parish.

13 §101.3. Assignment of districts; vacancies, elections; redistricting

14 A. Each justice of the supreme court in office on January 1, 2023, shall be
15 the justice for the district having the same designation as the district from which the
16 justice was elected and shall complete the term for which he was elected.

17 B. The successor to the office of justice of the supreme court shall be elected
18 from the district assigned to that office as provided by Subsection A of this Section.

19 The election shall be from the district composed as provided by R.S. 13:101.2.

20 Section 2. R.S. 13:101, 101.1 and 312.4 are hereby repealed.

21 Section 3.(A) The precincts referenced in this Act are those precincts identified as
22 Voting Districts (VTDs) in the 2020 Census Redistricting TIGER/Line Shapefiles for the
23 State of Louisiana as validated through the data verification program of the Louisiana House
24 of Representatives and the Louisiana Senate and available on the legislature's website on the
25 effective date of this Section.

26 (B) When a precinct referenced in this Act has been subdivided by action of the
27 parish governing authority on a nongeographic basis or subdivided by action of the parish
28 governing authority on a geographic basis in accordance with the provisions of R.S.
29 18:532.1, the enumeration in this Act of the general precinct designation shall include all

1 nongeographic and all geographic subdivisions thereof, however such subdivisions may be
2 designated.

3 (C) The territorial limits of the districts as provided in this Act shall continue in
4 effect until changed by law regardless of any subsequent change made to the precincts by
5 the parish governing authority.

6 Section 4.(A) Solely for the purposes of qualifying for election and the election of
7 a member of the supreme court from District 6 at the regularly scheduled election for such
8 office in 2022, the provisions of Section 1 of this Act shall become effective upon signature
9 of this Act by the governor or, if not signed by the governor, upon expiration of the time for
10 bills to become law without signature by the governor, as provided in Article III, Section 18
11 of the Constitution of Louisiana. For subsequent elections of members of the supreme court
12 and for all other purposes, the provisions of Section 1 of this Act shall become effective on
13 January 1, 2023.

14 (B) The provisions of Section 2 of this Act shall become effective on January 1,
15 2023.

16 (C) The provisions of this Section and Section 3 of this Act shall become effective
17 upon signature of this Act by the governor or, if not signed by the governor, upon expiration
18 of the time for bills to become law without signature by the governor, as provided in Article
19 III, Section 18 of the Constitution of Louisiana. If this Act is vetoed by the governor and
20 subsequently approved by the legislature, the provisions of this Section and Section 3 of this
21 Act shall become effective on the day following such approval.

DIGEST

The digest printed below was prepared by House Legislative Services. It constitutes no part of the legislative instrument. The keyword, one-liner, abstract, and digest do not constitute part of the law or proof or indicia of legislative intent. [R.S. 1:13(B) and 24:177(E)]

HB 18 Engrossed

2022 First Extraordinary Session

Wilford Carter

Abstract: Provides for the redistricting of the state's supreme court and provides for the composition of seven supreme court districts. Effective for election purposes for the regular supreme court District 6 election in 2022 and for all purposes on Jan. 1, 2023.

Statistical summaries of proposed law including maps illustrating proposed district boundaries accompany this digest. (*Attached to the bill version on the internet.*)

Present constitution (Const. Art. V, §3) provides the supreme court must be composed of a chief justice and six associate justices.

Present constitution (Const. Art. V, §4) provides the state must be divided into at least six supreme court districts, and at least one judge shall be elected from each. Further provides the districts and the number of judges assigned to each on the effective date of this constitution are retained, subject to change by law enacted by two-thirds of the elected members of each house of the legislature.

Proposed law redraws district boundaries for the seven supreme court districts.

Proposed law provides the district boundaries will be effective upon signature of the governor or lapse of time for gubernatorial action for the purposes of qualifying for election and the election of a member of the supreme court from District 6 at the regularly scheduled election for such office in 2022.

Proposed law provides for subsequent elections of members of the supreme court and for all other purposes an effective date of Jan. 1, 2023, at which time present law is repealed and proposed districts are effective for all other purposes.

Proposed law repeals present law that provides for an additional judgeship for the Court of Appeals for the Fourth Circuit who is assigned to the La. Supreme Court.

Proposed law specifies that precincts referenced in district descriptions are those precincts identified as Voting Districts (VTDs) in the 2020 Census Redistricting TIGER/Line Shapefiles for the state of La. as validated through the data verification program of the La. legislature. Also specifies that if any such precinct has been subdivided by action of the parish governing authority on a nongeographic basis or subdivided by action of the parish governing authority on a geographic basis in accordance with present law, the enumeration of the general precinct designation shall include all nongeographic and all geographic subdivisions thereof. Further provides that the territorial limits of the districts as enacted shall continue in effect until changed by law regardless of any subsequent change made to the precincts by the parish governing authority.

Population data in the summaries accompanying this digest are derived from 2020 Census Redistricting Data (Public Law 94-171), Summary File for Louisiana. Population data, statistical information, and maps are supplied for purposes of information and analysis and comprise no part of proposed law.

Effective for election purposes only for the supreme court District 6 election in 2022; effective for other purposes Jan. 1, 2023.

(Adds R.S. 13:101.2 and 101.3; Repeals R.S. 13:101, 101.1, and 312.4)

Plan Statistics

Plan: HB 18 Engrossed (W. Carter) 221ES-37

<u>Districts:</u>	<u># of Members</u>	<u>Actual Population</u>	<u>Ideal Population</u>	<u>Absolute Deviation</u>	<u>Relative Deviation</u>
District 1	1	732,465	665,393	67,072	10.080%
District 2	1	666,080	665,393	687	0.103%
District 3	1	743,917	665,393	78,524	11.801%
District 4	1	565,221	665,393	-100,172	-15.055%
District 5	1	645,467	665,393	-19,926	-2.995%
District 6	1	731,745	665,393	66,352	9.972%
District 7	1	572,862	665,393	-92,531	-13.906%
Grand Total:	7	4,657,757	4,657,751		

Ideal Population Per Member:	665393		
Number of Districts for Plan Type:	7		
Range of District Populations:	565,221	to	743,917
Absolute Mean Deviation:	25,528		
Absolute Range:	-100,172	to	78,524
Absolute Overall Range:	178,696		
Relative Mean Deviation:	9.13%		
Relative Range:	-15.05%	to	11.80%
Relative Overall Range:	26.85%		

<i>Ideal - Actual:</i>	-6
<i>Remainder:</i>	6
<i>Unassigned Population:</i>	0

Total Population

Plan: HB 18 Engrossed (W. Carter) 221ES-37

	Total Population	Total White	Total Black	Total Asian	Total American Indian	Total Other	Total Hispanic	VAP Total	VAP White	VAP Black	VAP Asian	VAP American Indian	VAP Other	VAP Hispanic Total
District 1	732,465	515,145	112,718	21,639	13,719	69,244	86,295	572,936	416,071	80,717	16,041	10,242	49,865	61,508
	100.000%	70.330%	15.389%	2.954%	1.873%	9.454%	11.781%	100.000%	72.621%	14.088%	2.800%	1.788%	8.703%	10.736%
District 2	666,080	352,040	269,817	10,490	11,699	22,034	26,456	511,028	283,112	196,159	7,732	8,969	15,056	17,550
	100.000%	52.853%	40.508%	1.575%	1.756%	3.308%	3.972%	100.000%	55.400%	38.385%	1.513%	1.755%	2.946%	3.434%
District 3	743,917	520,255	152,670	16,923	17,689	36,380	43,052	563,548	408,525	105,462	12,163	12,501	24,897	28,775
	100.000%	69.935%	20.522%	2.275%	2.378%	4.890%	5.787%	100.000%	72.492%	18.714%	2.158%	2.218%	4.418%	5.106%
District 4	565,221	196,843	333,629	7,818	4,882	22,049	26,299	432,229	162,341	244,512	6,212	3,643	15,521	18,195
	100.000%	34.826%	59.026%	1.383%	0.864%	3.901%	4.653%	100.000%	37.559%	56.570%	1.437%	0.843%	3.591%	4.210%
District 5	645,467	418,388	179,213	8,540	16,210	23,116	29,430	491,928	328,375	127,190	6,424	12,057	17,882	22,194
	100.000%	64.819%	27.765%	1.323%	2.511%	3.581%	4.559%	100.000%	66.753%	25.855%	1.306%	2.451%	3.635%	4.512%
District 6	731,745	497,273	151,594	20,162	16,183	46,533	54,538	553,947	390,783	105,450	14,427	11,583	31,704	36,160
	100.000%	67.957%	20.717%	2.755%	2.212%	6.359%	7.453%	100.000%	70.545%	19.036%	2.604%	2.091%	5.723%	6.528%
District 7	572,862	157,708	343,478	21,716	6,678	43,282	56,479	444,932	135,304	256,279	17,417	5,245	30,687	39,280
	100.000%	27.530%	59.958%	3.791%	1.166%	7.555%	9.859%	100.000%	30.410%	57.600%	3.915%	1.179%	6.897%	8.828%
Grand Total	4,657,757	2,657,652	1,543,119	107,288	87,060	262,638	322,549	3,570,548	2,124,511	1,115,769	80,416	64,240	185,612	223,662
	100.000%	57.059%	33.130%	2.303%	1.869%	5.639%	6.925%	100.000%	59.501%	31.249%	2.252%	1.799%	5.198%	6.264%

Voter Registration

Plan: HB 18 Engrossed (W. Carter) 221ES-37

	Reg Total Dec 2021	Reg White Dec 2021	Reg Black Dec 2021	Reg Other Dec 2021	Reg Dem Total Dec 2021	Reg Rep Total Dec 2021	Reg Other Total Dec 2021
District 1	470,584	373,568	57,313	39,703	134,225	197,127	139,232
	82.136%	79.384%	12.179%	8.437%	28.523%	41.890%	29.587%
District 2	412,349	239,431	157,288	15,630	167,136	145,175	100,038
	80.690%	58.065%	38.144%	3.790%	40.533%	35.207%	24.261%
District 3	459,749	355,046	82,935	21,768	145,792	187,095	126,862
	81.581%	77.226%	18.039%	4.735%	31.711%	40.695%	27.594%
District 4	343,892	127,648	203,892	12,352	198,954	64,362	80,576
	79.562%	37.119%	59.290%	3.592%	57.854%	18.716%	23.431%
District 5	392,264	275,106	102,322	14,836	142,771	150,882	98,611
	79.740%	70.133%	26.085%	3.782%	36.397%	38.464%	25.139%
District 6	450,723	346,597	78,794	25,332	141,899	183,388	125,436
	81.366%	76.898%	17.482%	5.620%	31.483%	40.688%	27.830%
District 7	364,785	110,593	220,204	33,988	230,227	40,751	93,807
	81.987%	30.317%	60.365%	9.317%	63.113%	11.171%	25.716%
Grand Total	2,894,346	1,827,989	902,748	163,609	1,161,004	968,780	764,562

Splits

Plan: HB 18 Engrossed (W. Carter) 221ES-37

	Total Population	Total White	Total Black	Total Asian	Total American Indian	Total Other	VAP Total	VAP White	VAP Black	VAP Asian	VAP American Indian	VAP Other	Reg Total Dec 2021	Reg White Dec 2021	Reg Black Dec 2021	Reg Other Dec 2021
District 1																
*Jefferson	234,973	149,203	31,419	11,449	4,026	38,876	188,174	125,126	23,099	8,650	3,033	28,266	142,796	110,935	12,940	18,921
*Livingston	11,453	9,605	1,051	83	210	504	8,809	7,544	728	44	164	329	7,670	6,784	671	215
*Orleans	68,631	52,518	7,499	2,860	806	4,948	57,029	44,101	6,257	2,240	653	3,778	47,462	38,269	4,119	5,074
*St. Charles	21,835	15,098	4,088	387	391	1,871	16,501	11,852	2,831	260	270	1,288	14,522	11,075	2,483	964
*St. John the Baptist	4,251	2,434	1,274	24	83	436	3,358	2,072	920	21	58	287	2,881	2,001	734	146
St. Tammany	264,570	196,641	38,643	5,774	5,660	17,852	202,228	154,621	26,761	4,075	4,161	12,610	178,779	145,724	21,142	11,913
*Tangipahoa	81,289	59,703	15,310	846	1,807	3,623	61,886	47,012	10,389	597	1,342	2,546	48,887	39,945	7,122	1,820
Washington	45,463	29,943	13,434	216	736	1,134	34,951	23,743	9,732	154	561	761	27,587	18,835	8,102	650
District 1	732,465	515,145	112,718	21,639	13,719	69,244	572,936	416,071	80,717	16,041	10,242	49,865	470,584	373,568	57,313	39,703
	100.000%	70.330%	15.389%	2.954%	1.873%	9.454%	100.000%	72.621%	14.088%	2.800%	1.788%	8.703%	82.136%	79.384%	12.179%	8.437%
District 2																
Bienville	12,981	6,950	5,600	57	207	167	10,073	5,486	4,284	30	162	111	8,847	4,843	3,917	87
Bossier	128,746	81,052	32,551	3,492	3,273	8,378	95,876	62,931	22,440	2,448	2,477	5,580	69,743	50,861	14,838	4,044
Caddo	237,848	103,457	119,304	4,034	3,840	7,213	182,407	85,059	86,359	3,008	2,958	5,023	151,296	73,113	71,249	6,934
Claiborne	14,170	7,263	6,360	88	185	274	11,507	6,258	4,824	55	140	230	8,598	4,632	3,820	146
De Soto	26,812	15,284	9,973	117	740	698	20,440	11,909	7,425	86	557	463	18,713	11,330	6,810	573
East Carroll	7,459	2,054	5,272	29	43	61	5,901	1,773	4,043	19	27	39	4,709	1,306	3,359	44
Franklin	19,774	12,492	6,802	70	205	205	15,028	9,901	4,779	44	153	151	13,159	9,015	4,034	110
Lincoln	48,396	26,034	19,364	892	662	1,444	38,655	21,306	15,119	744	526	960	25,649	15,672	9,016	961
Madison	10,017	3,475	6,363	20	59	100	7,435	2,906	4,391	9	48	81	7,278	2,494	4,674	110
Morehouse	25,629	12,281	12,484	160	370	334	20,062	10,095	9,300	117	279	271	16,922	8,505	8,131	286
*Ouachita	42,233	23,080	16,501	1,128	626	898	32,109	18,530	11,586	881	468	644	25,322	15,770	8,491	1,061
Richland	20,043	11,785	7,603	83	258	314	15,383	9,338	5,546	66	203	230	13,662	8,470	4,961	231
Tensas	4,147	1,744	2,312	23	26	42	3,235	1,446	1,728	12	23	26	3,455	1,503	1,917	35
Union	21,107	14,460	5,224	62	338	1,023	16,632	11,807	3,861	39	254	671	15,221	11,066	3,692	463
Webster	36,967	22,735	12,679	208	687	658	28,753	18,144	9,464	154	558	433	22,737	14,938	7,339	460
West Carroll	9,751	7,894	1,425	27	180	225	7,532	6,223	1,010	20	136	143	7,038	5,913	1,040	85
District 2	666,080	352,040	269,817	10,490	11,699	22,034	511,028	283,112	196,159	7,732	8,969	15,056	412,349	239,431	157,288	15,630
	100.000%	52.853%	40.508%	1.575%	1.756%	3.308%	100.000%	55.400%	38.385%	1.513%	1.755%	2.946%	80.690%	58.065%	38.144%	3.790%
District 3																
*Acadia	34,765	25,419	8,125	160	331	730	26,265	19,885	5,574	119	226	461	22,788	17,517	4,845	426
*Calcasieu	167,589	129,004	23,829	4,093	3,132	7,531	126,336	99,780	16,120	2,910	2,303	5,223	94,198	80,037	10,005	4,156
Cameron	5,617	5,232	125	30	75	155	4,358	4,100	79	23	47	109	4,789	4,610	88	91
Iberia	69,929	39,206	24,556	2,123	794	3,250	52,791	31,295	17,069	1,562	581	2,284	44,526	28,287	14,352	1,887

Splits

Plan: HB 18 Engrossed (W. Carter) 221ES-37

	Total Population	Total White	Total Black	Total Asian	Total American Indian	Total Other	VAP Total	VAP White	VAP Black	VAP Asian	VAP American Indian	VAP Other	Reg Total Dec 2021	Reg White Dec 2021	Reg Black Dec 2021	Reg Other Dec 2021
District 3																
*Iberville	4,213	3,921	118	9	67	98	3,439	3,226	72	8	59	74	3,023	2,905	52	66
*Jefferson Davis	4,688	4,105	468	11	46	58	3,546	3,177	293	4	30	42	3,027	2,740	226	61
*Lafayette	192,812	138,794	33,007	6,067	2,849	12,095	146,952	109,476	22,619	4,393	2,151	8,313	122,527	99,048	16,410	7,069
*St. Landry	19,889	14,914	4,366	92	184	333	15,121	11,592	3,137	60	121	211	13,817	10,637	2,837	343
St. Martin	51,767	33,259	15,921	597	539	1,451	39,404	26,278	11,293	407	413	1,013	35,120	23,934	10,381	805
St. Mary	49,406	26,949	15,991	835	1,670	3,961	37,521	21,594	11,520	593	1,173	2,641	30,210	18,712	9,891	1,607
*Terrebonne	85,883	54,975	17,354	1,459	7,379	4,716	64,803	43,759	11,899	1,047	4,909	3,189	48,955	36,114	8,854	3,987
Vermilion	57,359	44,477	8,810	1,447	623	2,002	43,012	34,363	5,787	1,037	488	1,337	36,769	30,505	4,994	1,270
District 3	743,917	520,255	152,670	16,923	17,689	36,380	563,548	408,525	105,462	12,163	12,501	24,897	459,749	355,046	82,935	21,768
	100.000%	69.935%	20.522%	2.275%	2.378%	4.890%	100.000%	72.492%	18.714%	2.158%	2.218%	4.418%	81.581%	77.226%	18.039%	4.735%
District 4																
*Acadia	7,821	7,010	509	21	79	202	5,686	5,185	302	15	52	132	5,107	4,770	239	98
*Avoyelles	1,658	680	938	7	23	10	1,225	546	644	7	20	8	1,032	490	524	18
*Calcasieu	49,196	10,768	35,557	609	404	1,858	36,830	9,009	25,778	449	301	1,293	26,313	5,622	19,508	1,183
*East Baton Rouge	229,381	54,198	157,546	5,024	1,673	10,940	176,405	46,416	116,850	4,142	1,309	7,688	136,162	33,418	96,619	6,125
East Feliciana	19,539	11,516	7,341	91	262	329	16,183	9,740	5,918	61	198	266	13,600	7,959	5,186	455
*Iberville	26,028	10,912	13,612	193	207	1,104	20,647	9,236	10,160	141	162	948	17,439	7,227	9,845	367
*Jefferson Davis	14,087	9,882	3,610	69	195	331	10,480	7,603	2,474	40	136	227	8,240	6,219	1,858	163
*Lafayette	48,941	14,569	32,129	387	361	1,495	36,923	12,132	23,298	271	236	986	30,966	9,597	20,071	1,298
Pointe Coupee	20,758	12,395	7,504	107	159	593	16,250	10,108	5,502	91	119	430	14,675	9,320	5,121	234
St. Helena	10,920	4,527	6,031	39	134	189	8,463	3,805	4,371	28	109	150	8,321	3,628	4,565	128
*St. Landry	57,025	24,247	30,519	356	408	1,495	42,425	19,086	21,800	255	293	991	36,855	16,364	19,555	936
*Tangipahoa	51,868	21,633	26,569	628	647	2,391	39,605	18,193	18,828	503	485	1,596	27,369	12,967	13,403	999
West Baton Rouge	27,199	14,307	11,170	287	326	1,109	20,526	11,146	8,149	209	219	803	17,141	9,937	6,865	339
*West Feliciana	800	199	594	0	4	3	581	136	438	0	4	3	672	130	533	9
District 4	565,221	196,843	333,629	7,818	4,882	22,049	432,229	162,341	244,512	6,212	3,643	15,521	343,892	127,648	203,892	12,352
	100.000%	34.826%	59.026%	1.383%	0.864%	3.901%	100.000%	37.559%	56.570%	1.437%	0.843%	3.591%	79.562%	37.119%	59.290%	3.592%
District 5																
*Acadia	14,990	12,051	2,230	57	163	489	10,992	9,001	1,507	39	122	323	9,783	8,268	1,323	192
Allen	22,750	16,327	4,490	246	947	740	17,510	12,751	3,275	182	646	656	12,201	9,478	2,217	506
*Avoyelles	38,035	24,945	10,740	427	744	1,179	29,353	19,723	7,667	372	550	1,041	22,394	16,044	5,770	580
Beauregard	36,549	29,529	4,649	402	1,052	917	27,489	22,304	3,495	269	773	648	22,294	18,771	2,369	1,154
Caldwell	9,645	7,646	1,632	51	150	166	7,478	5,969	1,224	46	116	123	6,031	5,124	818	89
Catahoula	8,906	5,776	2,395	46	119	570	6,951	4,557	1,736	33	87	538	6,467	4,639	1,770	58
Concordia	18,687	10,275	7,725	122	233	332	14,217	8,108	5,613	100	167	229	11,964	7,222	4,540	202

Splits

Plan: HB 18 Engrossed (W. Carter) 221ES-37

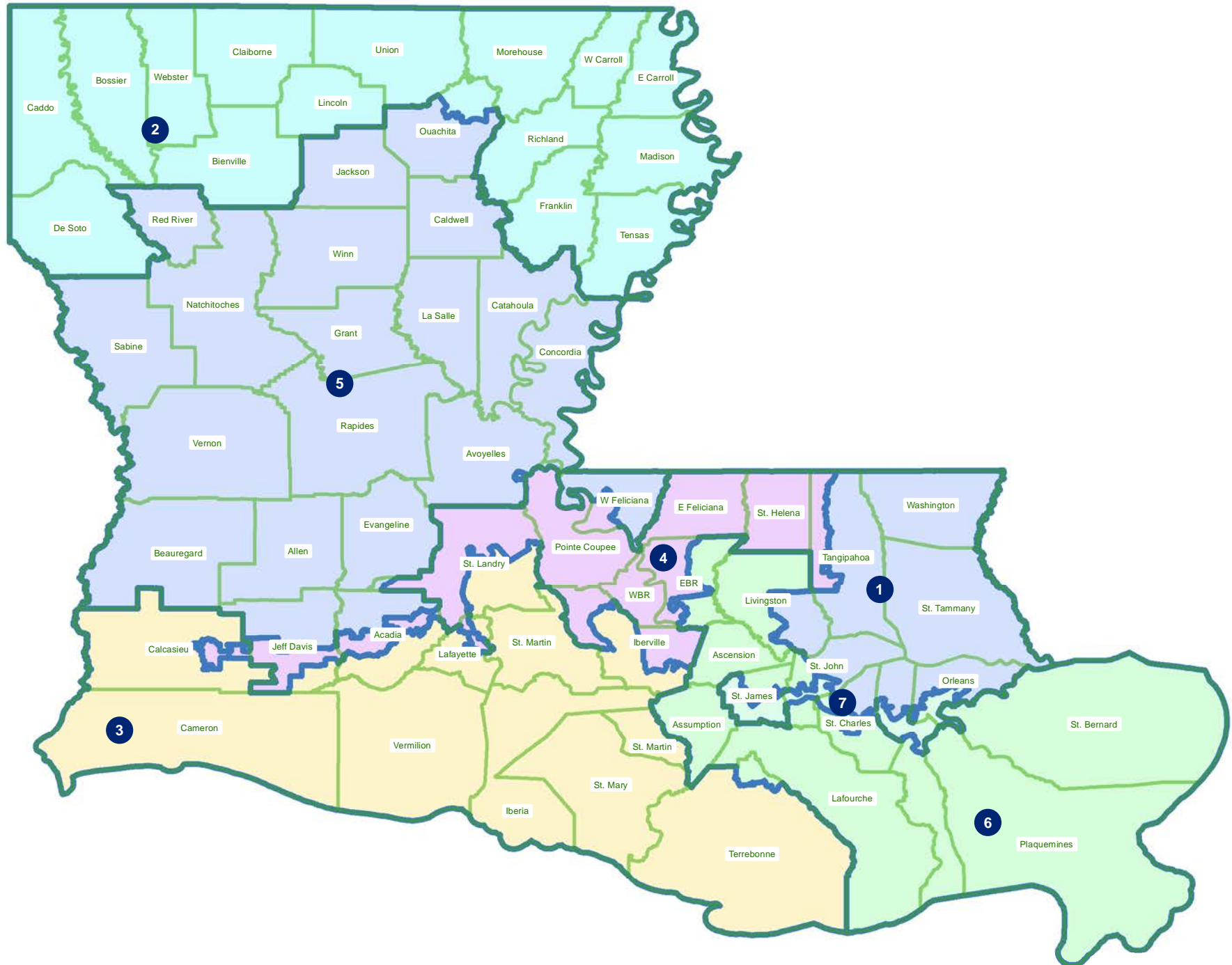
	Total Population	Total White	Total Black	Total Asian	Total American Indian	Total Other	VAP Total	VAP White	VAP Black	VAP Asian	VAP American Indian	VAP Other	Reg Total Dec 2021	Reg White Dec 2021	Reg Black Dec 2021	Reg Other Dec 2021
District 5																
Evangeline	32,350	21,354	9,235	241	280	1,240	24,408	16,460	6,483	187	217	1,061	20,553	14,566	5,643	344
Grant	22,169	17,709	3,335	133	644	348	17,527	13,964	2,717	97	507	242	12,688	11,174	1,176	338
Jackson	15,031	9,967	4,166	175	255	468	11,783	7,967	3,125	140	174	377	9,449	6,647	2,610	192
*Jefferson Davis	13,475	11,079	1,759	103	231	303	10,013	8,341	1,239	67	159	207	8,746	7,391	1,118	237
La Salle	14,791	11,348	1,422	283	372	1,366	11,563	8,636	1,065	264	271	1,327	8,792	7,978	637	177
Natchitoches	37,515	19,361	15,725	255	861	1,313	29,349	16,010	11,415	198	683	1,043	23,107	12,850	9,224	1,033
*Ouachita	118,135	65,465	44,716	1,660	2,035	4,259	88,091	51,444	30,704	1,237	1,591	3,115	74,430	44,745	27,167	2,518
Rapides	130,023	77,510	42,592	2,428	3,102	4,391	98,792	61,373	30,205	1,786	2,334	3,094	80,176	52,832	23,775	3,569
Red River	7,620	4,195	3,106	25	171	123	5,714	3,338	2,164	3	116	93	5,631	3,130	2,418	83
Sabine	22,155	15,036	3,861	94	2,723	441	17,064	12,054	2,655	66	1,970	319	14,547	11,023	2,184	1,340
*St. Landry	5,626	4,450	951	51	44	130	4,265	3,531	560	38	37	99	3,810	3,092	613	105
Vernon	48,750	35,087	7,611	1,442	1,600	3,010	36,261	26,765	5,133	1,074	1,160	2,129	24,060	19,182	3,011	1,867
*West Feliciana	14,510	10,684	3,146	89	221	370	12,202	9,147	2,513	56	170	316	6,735	4,962	1,647	126
Winn	13,755	8,594	3,727	210	263	961	10,906	6,932	2,695	170	207	902	8,406	5,988	2,292	126
District 5	645,467	418,388	179,213	8,540	16,210	23,116	491,928	328,375	127,190	6,424	12,057	17,882	392,264	275,106	102,322	14,836
	100.000%	64.819%	27.765%	1.323%	2.511%	3.581%	100.000%	66.753%	25.855%	1.306%	2.451%	3.635%	79.740%	70.133%	26.085%	3.782%
District 6																
Ascension	126,500	81,141	32,216	2,300	2,004	8,839	91,957	61,136	22,139	1,514	1,390	5,778	79,917	56,800	18,814	4,303
Assumption	21,039	13,722	6,220	96	258	743	16,616	11,145	4,707	57	197	510	14,439	9,700	4,510	229
*East Baton Rouge	227,400	141,871	55,852	11,401	3,054	15,222	179,207	117,465	39,940	8,457	2,438	10,907	143,102	104,814	28,056	10,232
*Jefferson	10,523	7,659	1,258	481	415	710	8,053	6,009	882	359	299	504	7,145	5,807	786	552
Lafourche	97,557	71,710	15,855	1,025	4,224	4,743	74,619	56,838	11,077	738	2,777	3,189	58,278	48,467	7,164	2,647
*Livingston	130,829	107,250	11,607	1,614	2,901	7,457	96,332	80,888	7,408	1,055	2,147	4,834	76,898	69,278	4,754	2,866
Plaquemines	23,515	14,287	5,428	1,317	697	1,786	17,334	10,856	3,857	925	500	1,196	13,908	9,513	3,134	1,261
St. Bernard	43,764	24,497	12,309	1,381	947	4,630	31,775	18,992	7,944	982	688	3,169	25,653	18,233	5,497	1,923
*St. Charles	13,553	11,052	1,347	206	330	618	9,992	8,344	867	123	226	432	9,346	8,164	804	378
*St. James	8,914	6,100	2,594	38	37	145	6,777	4,706	1,912	17	28	114	6,263	4,428	1,740	95
*St. John the Baptist	4,454	3,025	1,115	19	58	237	3,583	2,532	820	8	52	171	3,009	2,112	823	74
*Terrebonne	23,697	14,959	5,793	284	1,258	1,403	17,702	11,872	3,897	192	841	900	12,765	9,281	2,712	772
District 6	731,745	497,273	151,594	20,162	16,183	46,533	553,947	390,783	105,450	14,427	11,583	31,704	450,723	346,597	78,794	25,332
	100.000%	67.957%	20.717%	2.755%	2.212%	6.359%	100.000%	70.545%	19.036%	2.604%	2.091%	5.723%	81.366%	76.898%	17.482%	5.620%
District 7																
*Jefferson	195,285	64,073	93,540	11,094	3,245	23,333	148,427	53,000	68,194	8,683	2,503	16,047	113,160	42,874	55,850	14,436
*Orleans	315,366	73,944	211,470	9,996	2,860	17,096	249,167	66,151	159,811	8,280	2,295	12,630	208,782	53,717	137,406	17,659

Splits

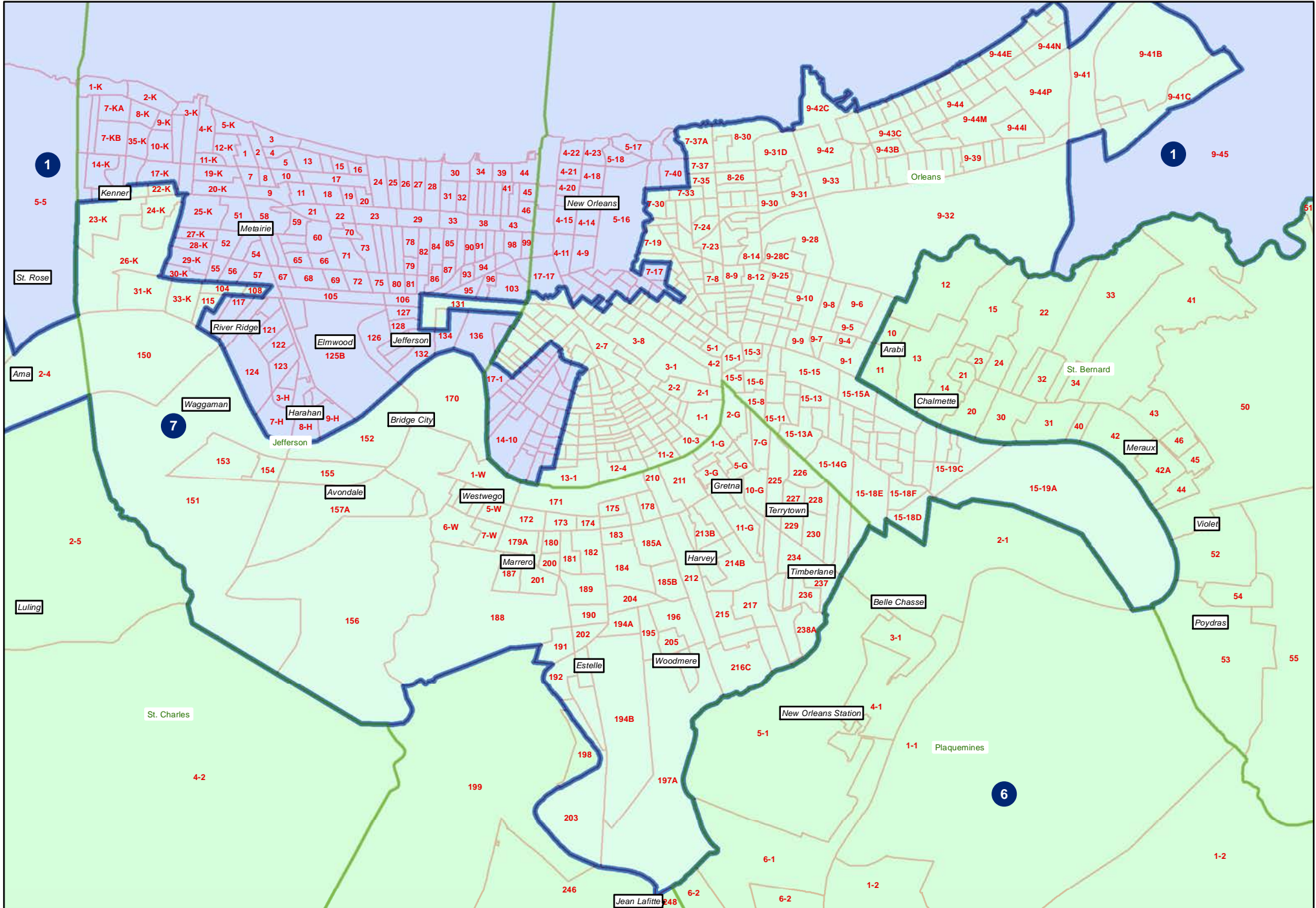
Plan: HB 18 Engrossed (W. Carter) 221ES-37

	Total Population	Total White	Total Black	Total Asian	Total American Indian	Total Other	VAP Total	VAP White	VAP Black	VAP Asian	VAP American Indian	VAP Other	Reg Total Dec 2021	Reg White Dec 2021	Reg Black Dec 2021	Reg Other Dec 2021
District 7																
*St. Charles	17,161	7,400	8,493	244	204	820	13,048	5,958	6,192	146	171	581	11,117	5,070	5,510	537
*St. James	11,278	3,873	7,168	22	45	170	8,728	3,177	5,385	14	36	116	8,703	2,826	5,761	116
*St. John the Baptist	33,772	8,418	22,807	360	324	1,863	25,562	7,018	16,697	294	240	1,313	23,023	6,106	15,677	1,240
District 7	572,862	157,708	343,478	21,716	6,678	43,282	444,932	135,304	256,279	17,417	5,245	30,687	364,785	110,593	220,204	33,988
	100.000%	27.530%	59.958%	3.791%	1.166%	7.555%	100.000%	30.410%	57.600%	3.915%	1.179%	6.897%	81.987%	30.317%	60.365%	9.317%

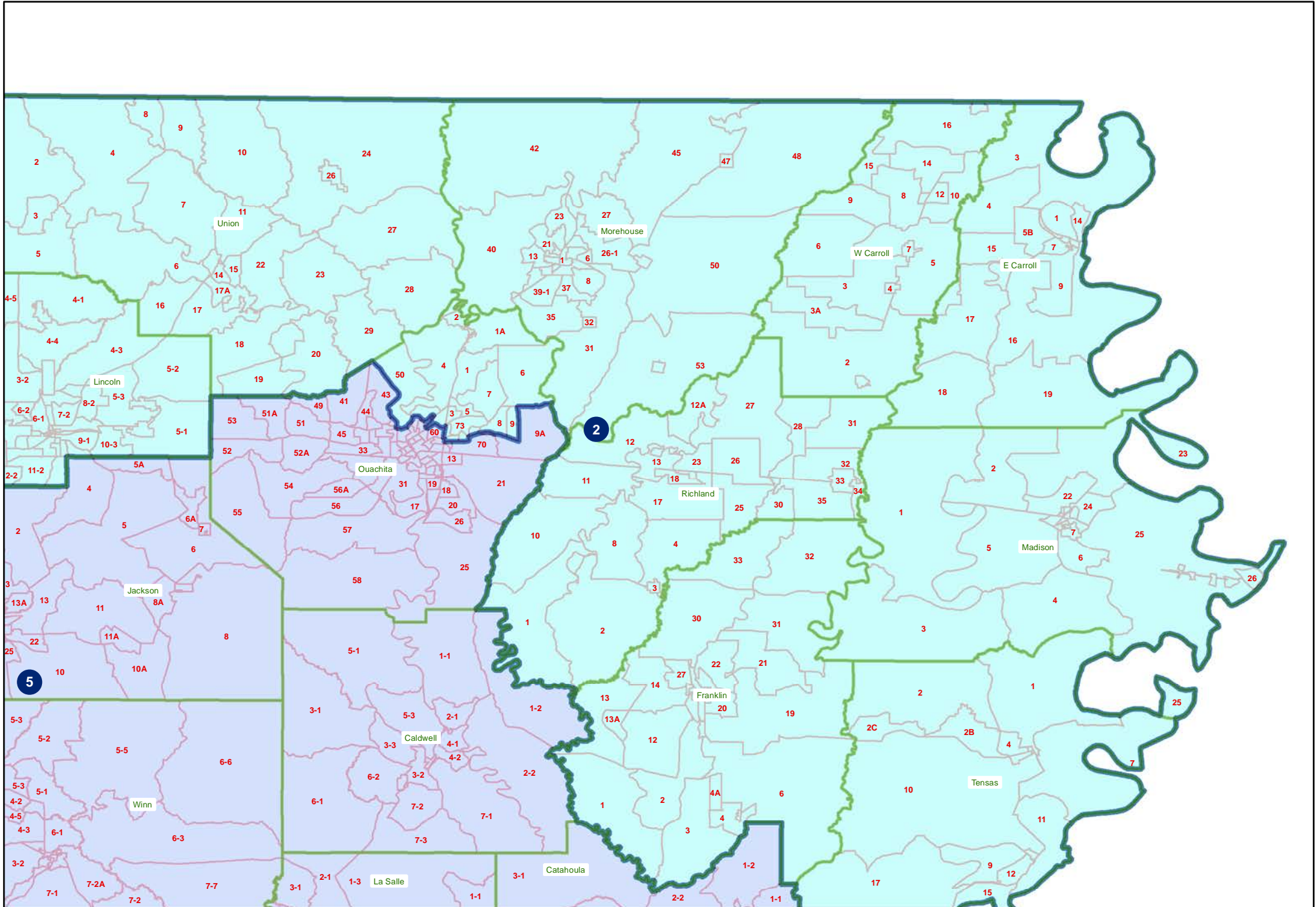
HB 18 Engrossed (W. Carter) 221ES-37
Statewide



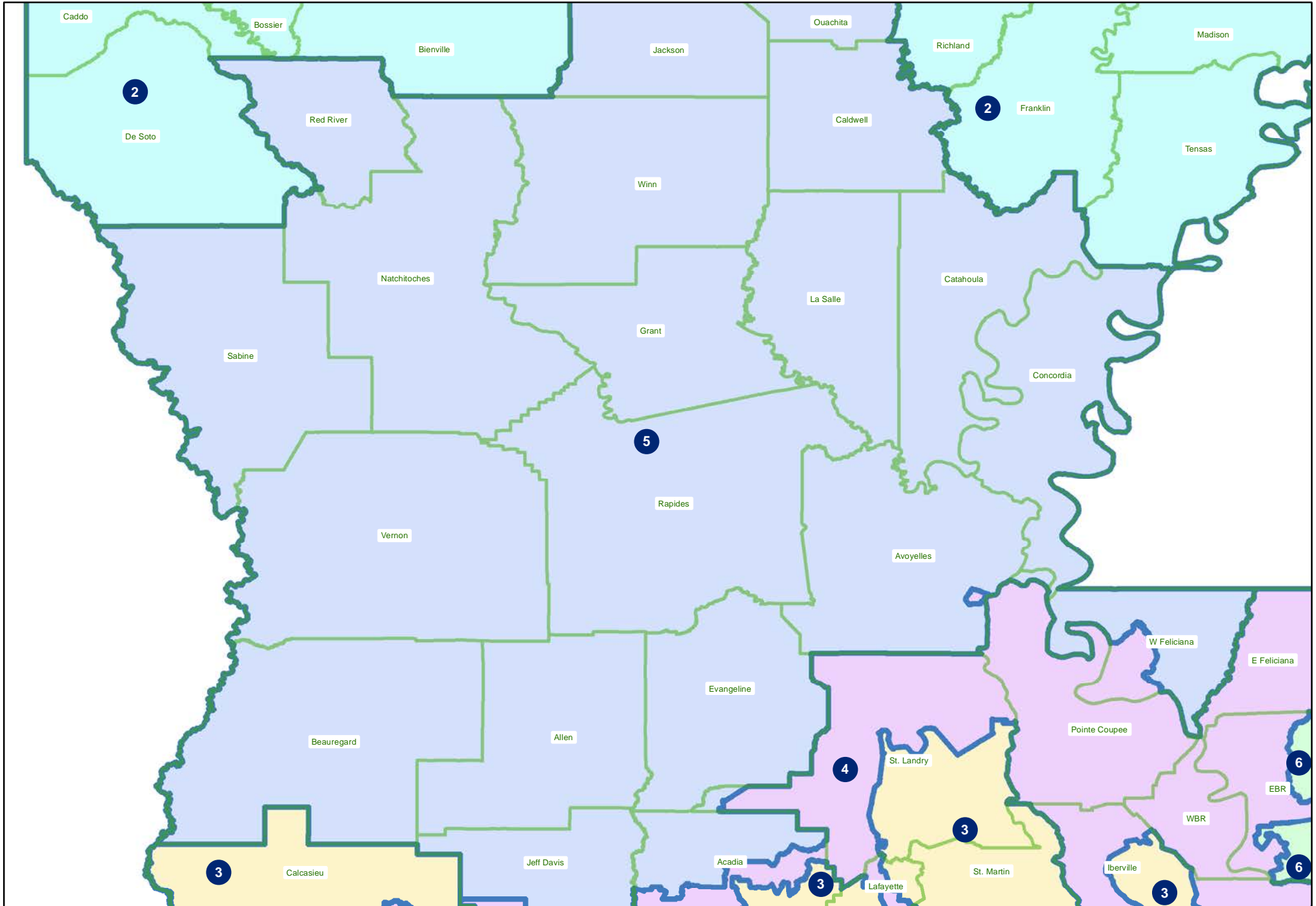
HB 18 Engrossed (W. Carter) 221ES-37
Orleans and Jefferson



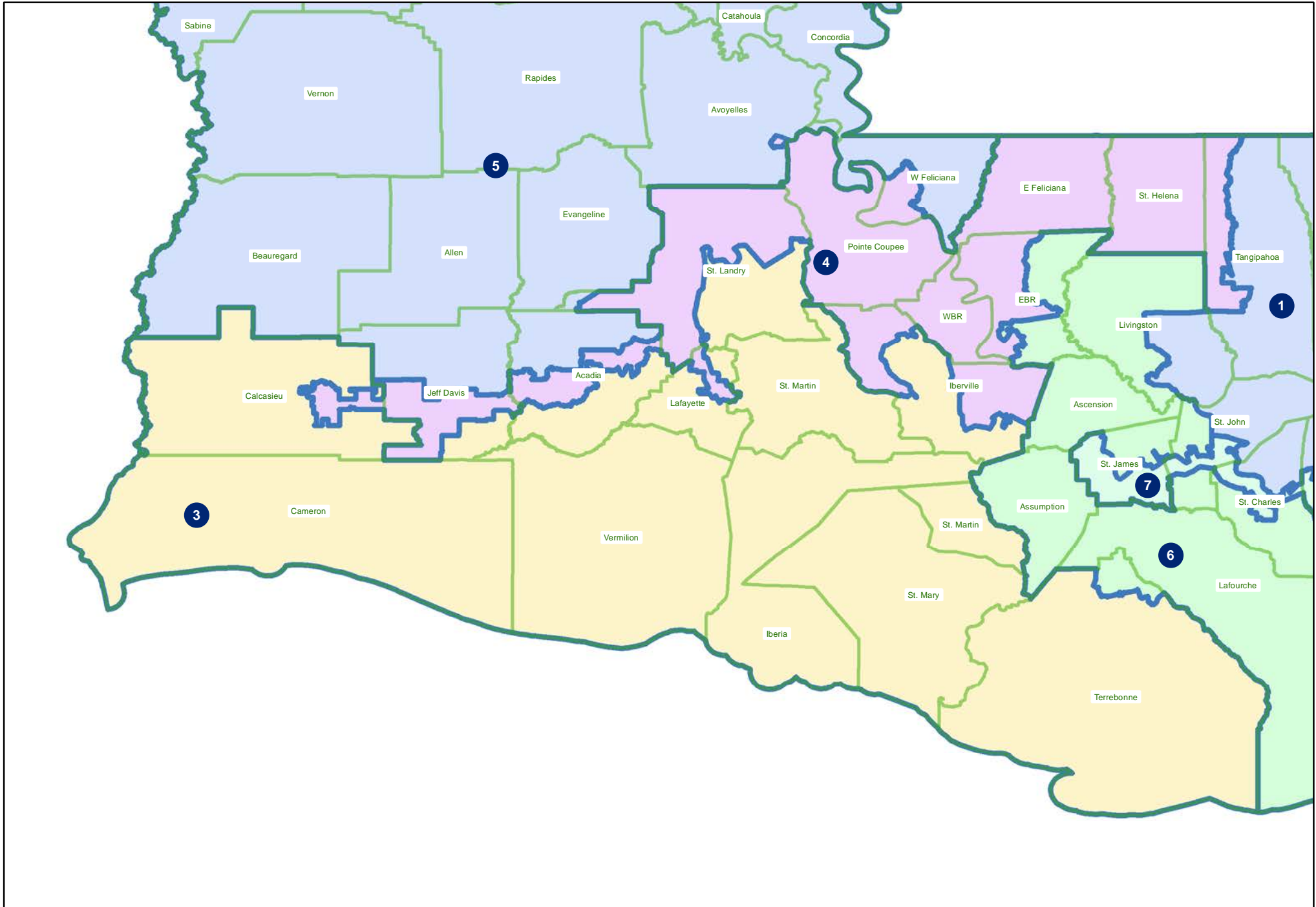
HB 18 Engrossed (W. Carter) 221ES-37
Northeast



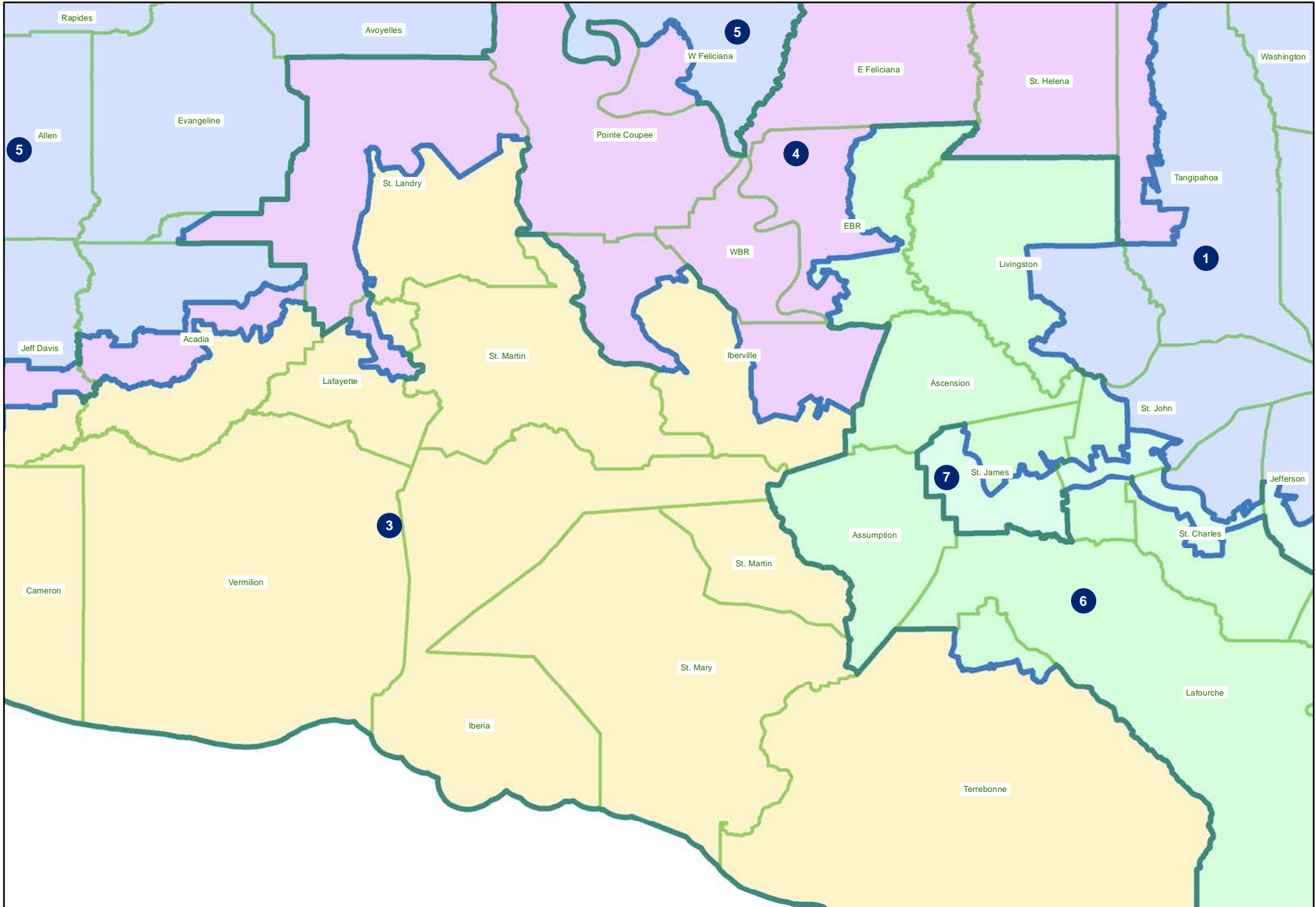
HB 18 Engrossed (W. Carter) 221ES-37
Central



HB 18 Engrossed (W. Carter) 221ES-37
Southwest

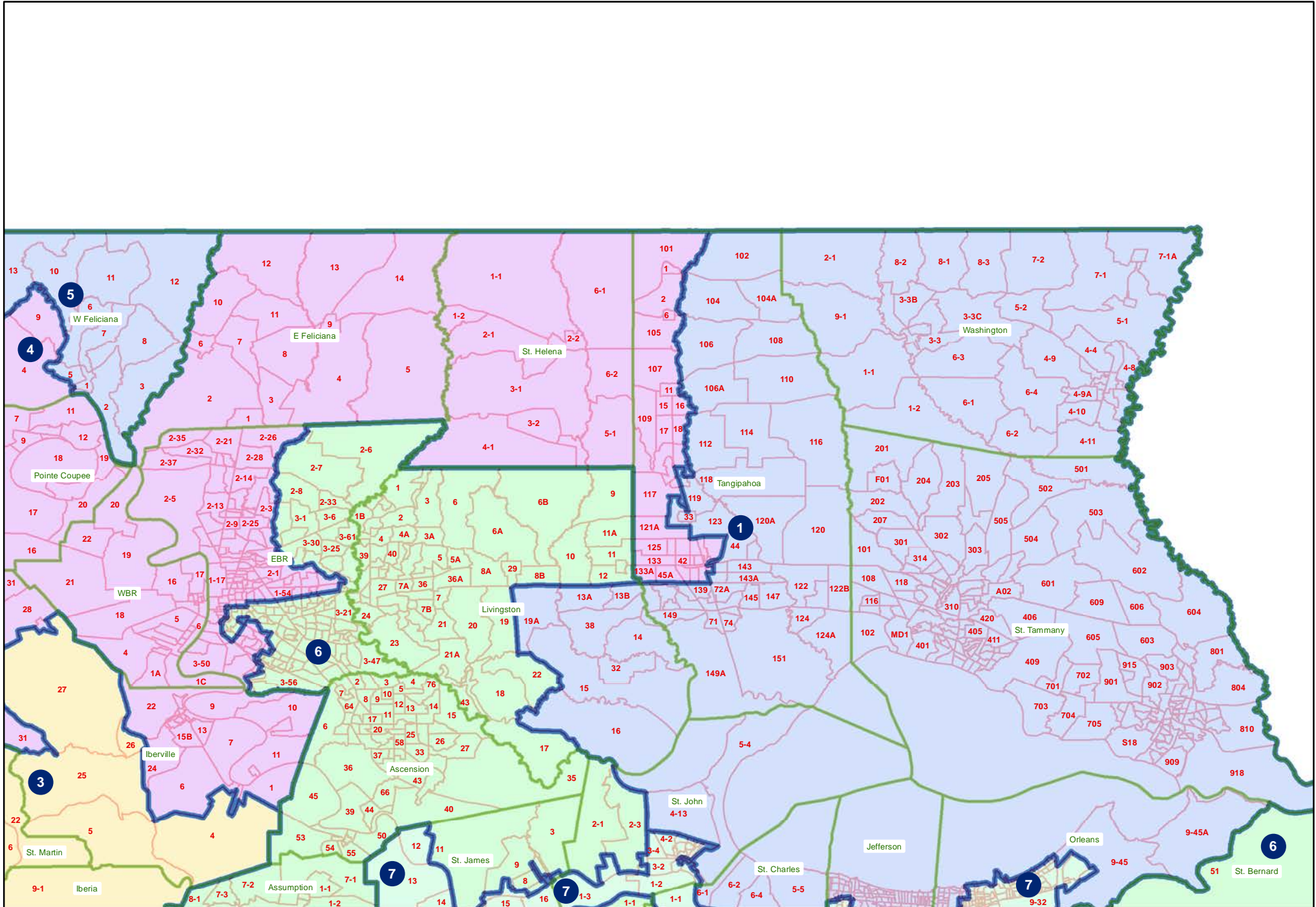


HB 18 Engrossed (W. Carter) 221ES-37
Acadiana and Bayou

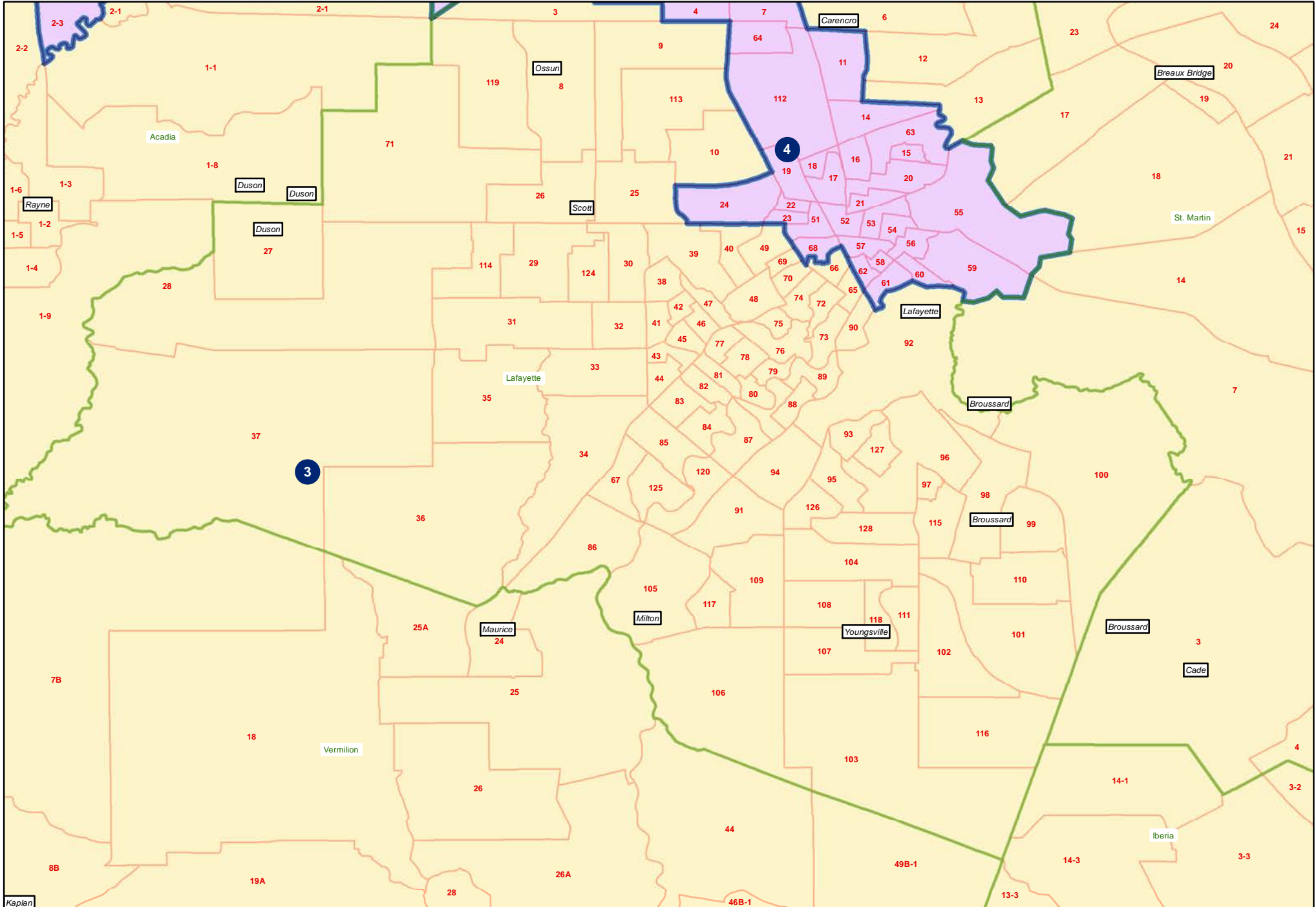


HB 18 Engrossed (W. Carter) 221ES-37

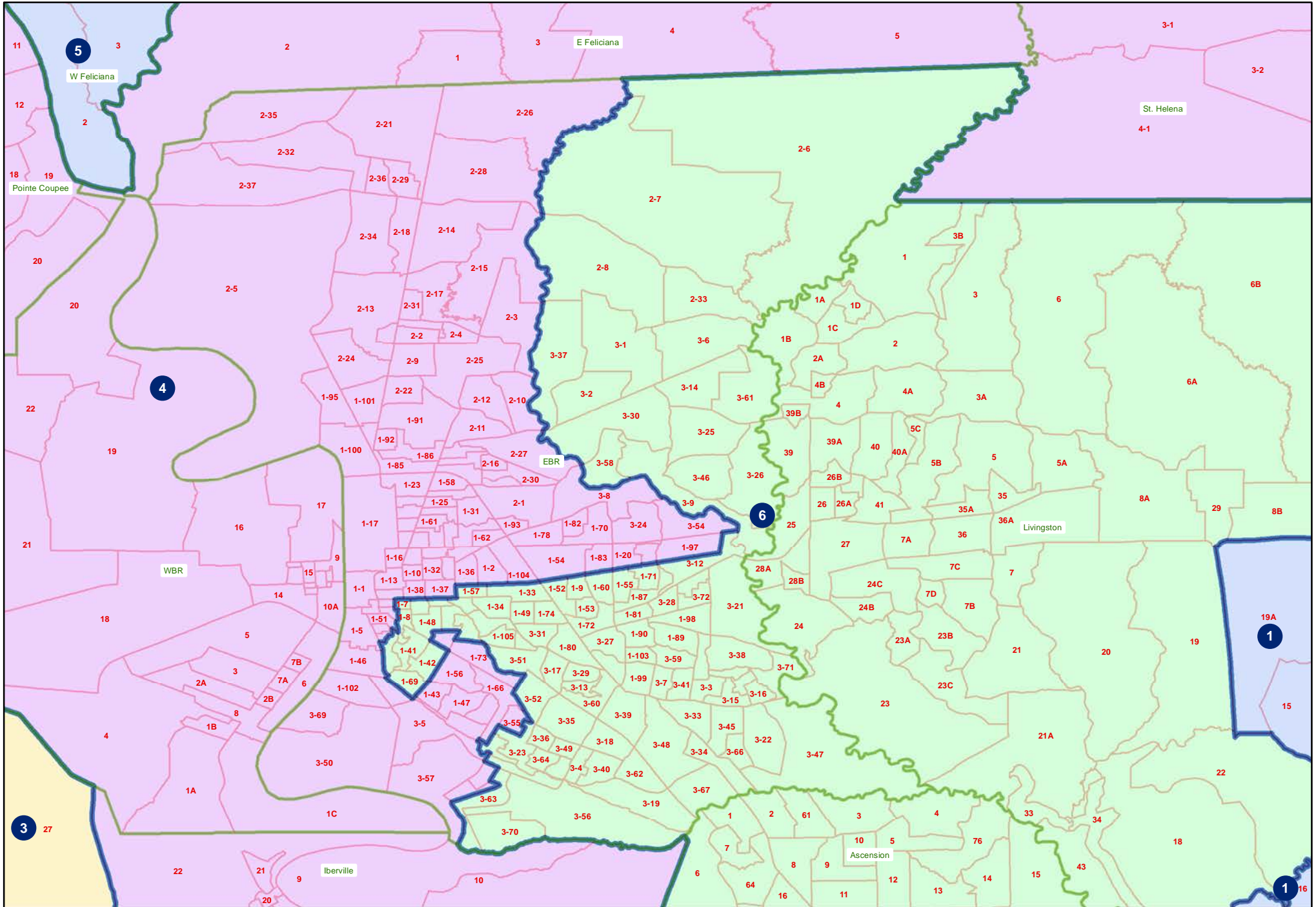
Florida Parishes



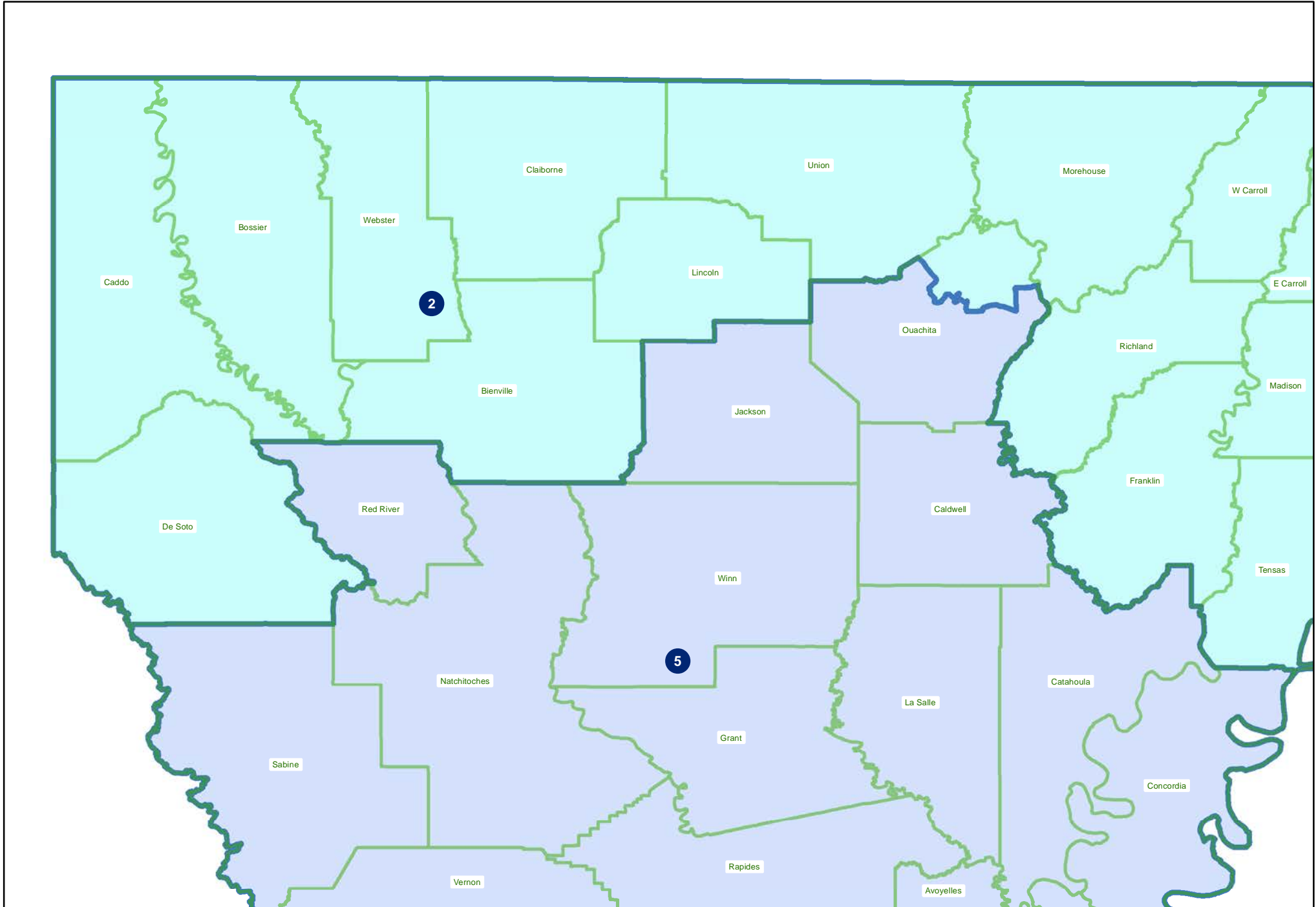
HB 18 Engrossed (W. Carter) 221ES-37
Lafayette



HB 18 Engrossed (W. Carter) 221ES-37
Baton Rouge



HB 18 Engrossed (W. Carter) 221ES-37
Northwest



HB 18 Engrossed (W. Carter) 221ES-37
Monroe

